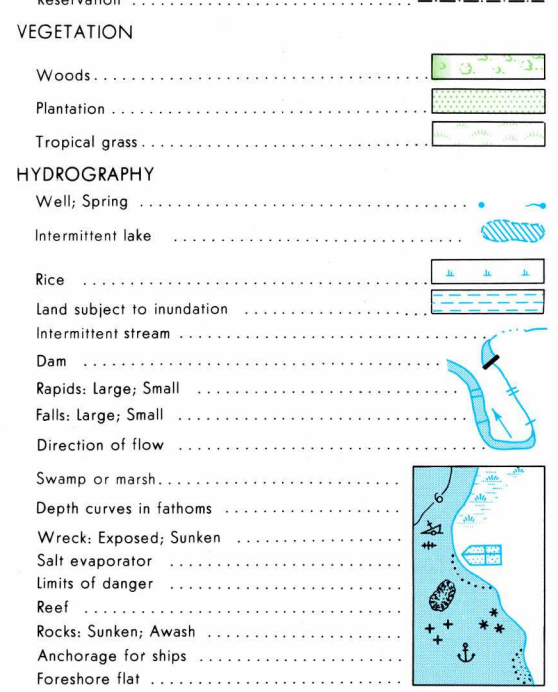
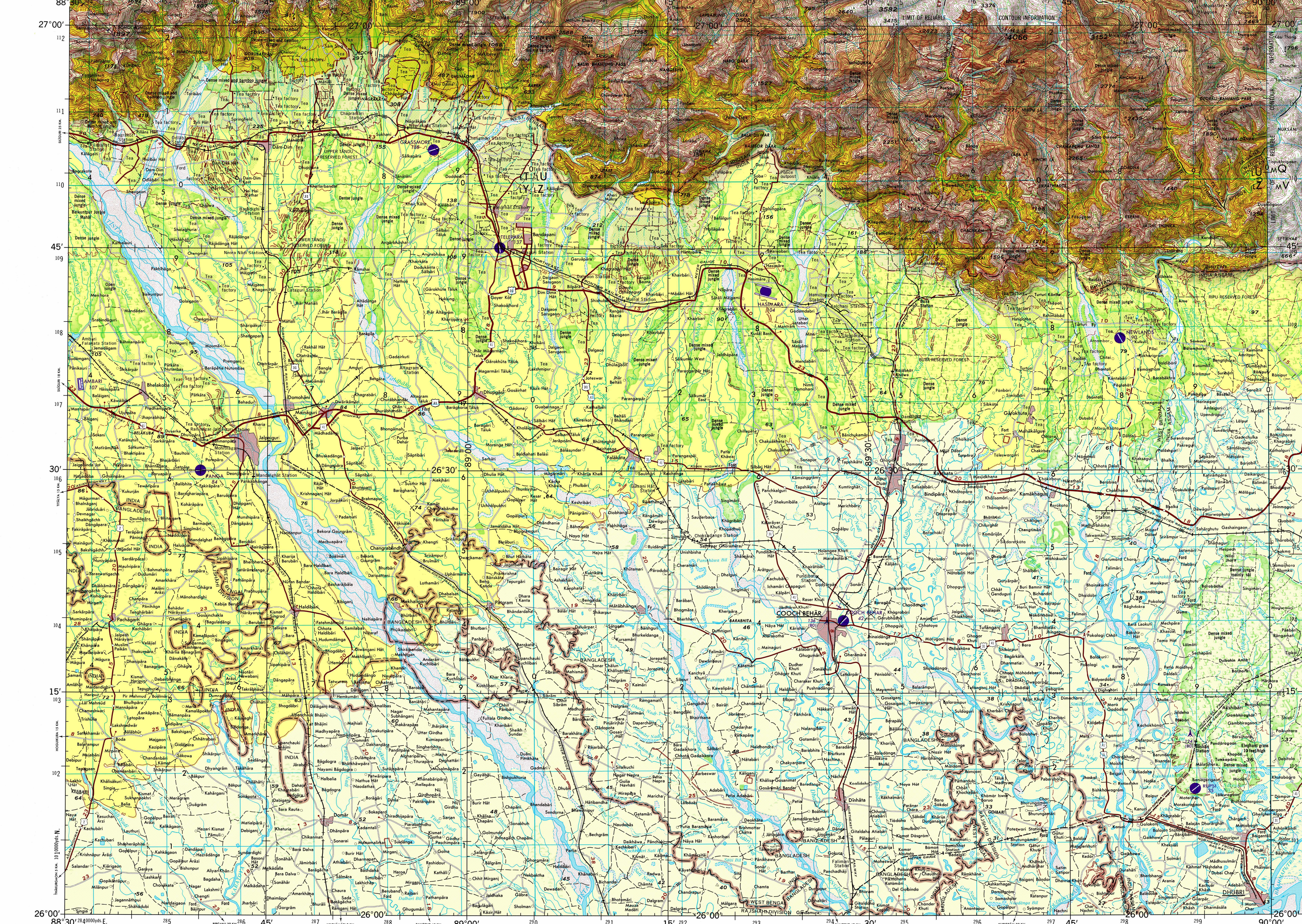


SERIES 1501
SHEET NG 45-8
EDITION 1

- POPULATED PLACES**
- First importance: **NEW DELHI**
 - Second importance: **BHOPAL**
 - Third importance: **BURG**
 - Fourth importance: **Dabra**
 - Fifth importance: **Oral**
 - District Headquarters: **QUITO**
- ROADS**
- Dual highway
 - All weather, hard surface
 - Two or more lanes wide
 - One lane wide
 - All weather, loose or light surface
 - Two or more lanes wide
 - One lane wide
 - Fair or dry weather, loose surface
 - Cart track
 - Footpath, trail
- RAILROADS**
- Normal gauge 1.6m (5'6")
 - Narrow gauge 7.6m (25')
 - Station, known location
 - Station, approximate location
- BOUNDARIES**
- International
 - First order administrative division
 - Reservation
- VEGETATION**
- Woods
 - Plantation
 - Tropical grass
- HYDROGRAPHY**
- Well, Spring
 - Intermittent lake
 - Rice
 - Land subject to inundation
 - Intermittent stream
 - Dam
 - Rapids, Large, Small
 - Falls, Large, Small
 - Direction of flow
 - Swamp or marsh
 - Depth curves in fathoms
 - Wreck, Exposed, Sunken
 - Salt evaporator
 - Limits of danger
 - Reef
 - Rocky, Sunken, Awash
 - Anchorage for ships
 - Foreshore flat
- OTHER FEATURES**
- Landmark feature
 - School, Church, Mosque
 - Cave, Mountain pass
 - Mine, Tank
 - Railroad, Road
 - Levee, Dissected terrain
 - Horizontal control point
 - Area name
 - Depression contour
 - Form lines
 - Glacier
 - Glacial moraine
- TERRAIN ELEVATIONS**
- Spot elevation: Normal, Critical
 - HIGHEST KNOWN ELEVATION IS **4066** meters at 26°59'N, 89°40'E
- AERODROMES (Military or Civil)**
- Field limits with runway pattern
 - EDNA Name
 - 221 Elevation
 - Field limits, with runway pattern unknown
 - Field limits unknown, with runway pattern
 - Field limits unknown, with runway pattern
- SEAPLANE BASE**
- SEAPLANE (EMERGENCY)**
- HELIPORT**
- VISUAL AIDS AND OBSTRUCTIONS**
- Obstruction
 - 338 Elevation of obstruction top, above sea level
 - 779 Elevation of obstruction top, above ground level
 - Group obstruction
 - Radio facility obstruction
 - Power transmission line
- MAGNETIC DECLINATION FOR 1975 IS 1° 10' (10 MILES) WESTERLY OVER THE ENTIRE AREA.**

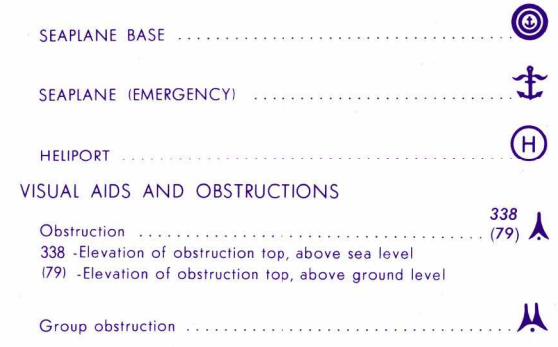


ELEVATIONS IN METERS

METERS	FEET
1000	3281
2000	6562
3000	9843
4000	13124
5000	16405
6000	19686
7000	22967
8000	26248
9000	29529
10000	32810

CONVERSION OF ELEVATIONS

METERS	FEET
100	328
200	656
300	984
400	1312
500	1640
600	1968
700	2296
800	2624
900	2952
1000	3281



SCALE 1:250,000

JALPAIGURI, INDIA; BANGLADESH; BHUTAN

SERIES 1501
SHEET NG 45-8
EDITION 1

JOINT OPERATIONS GRAPHIC

Scale 1:250,000

0 5 10 15 20 25 30 Statute Miles

0 5 10 15 20 25 30 Kilometers

0 5 10 15 20 25 30 Nautical Miles

CONTOUR INTERVAL APPROXIMATELY 60 METERS
WITH SUPPLEMENTARY CONTOURS AT APPROXIMATELY 30 METER INTERVALS

BLACK NUMBERED LINES INDICATE THE 10,000 YARD INDIA ZONE 118 GRID, EVEREST SPHEROID

USERS SHOULD REFER CORRECTIONS, ADDITIONS, AND COMMENTS TO THE MIA OPERATIONAL HELP DESK: 1-800-458-8888, COMMERCIAL 214-261-4864, OR WRITE TO: DIRECTOR, NATIONAL GEOSPATIAL-INTelligence AGENCY, ATTN: ES, MAIL STOP 1-80, 4800 SANGHAMORE ROAD, BETHESDA, MD 20818-3002

GLOSSARY

- BH lake, marsh
- Chia stream
- Chu stream
- Jani stream
- Jhora stream
- Khale stream
- Lung valley
- Nadi stream

RELIABILITY OF THIS GRAPHIC

Compiled from best available source material

Horizontal Datum: Indian Datum
Vertical Datum: Mean Sea Level
Transverse Mercator Projection

NOTES

Road classification should be referred to with caution. Names for symbolized populated places are omitted where information is not available. Only obstructions 61 meters or more above ground level are shown. The information on obstructions is not necessarily complete. CAUTION: Power transmission line information on this sheet is incomplete. Figures along roads indicate approximate distances in kilometers. THE INTERNATIONAL BOUNDARY BETWEEN INDIA AND BANGLADESH IS IN DISPUTE. THE REPRESENTATION OF INTERNATIONAL BOUNDARIES IS NOT NECESSARILY AUTHORITY. A lane in India is generally considered as being 3.05 to 3.66 meters (10 to 12 feet) in width; in Bangladesh, 2.44 meters (8 feet) in width; in Bhutan, 2.74 meters (9 feet) in width.

NSN 764 301 4046151
NSA Ref No: 1501XNG4508