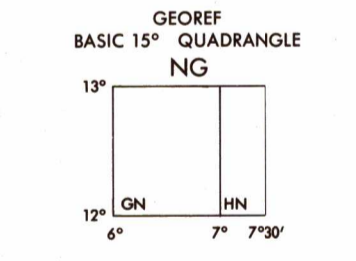


SERIES 1501 GROUND SHEET ND 32-13 EDITION 1

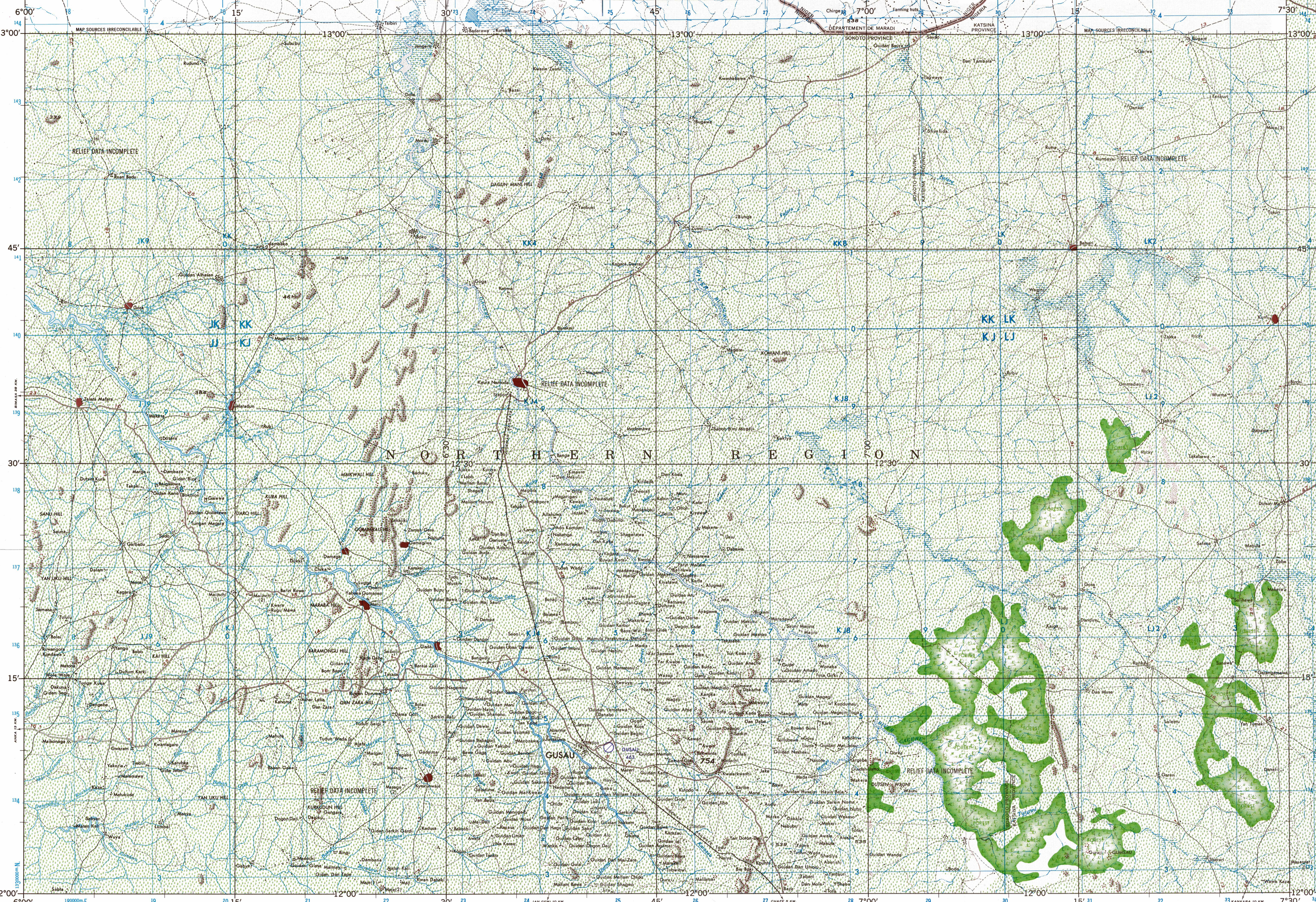
RELIABILITY OF THIS MAP (as determined by standard practices)
 Consulted from best available source materials, 1967
 Horizontal Datum: Local Datum
 Vertical Datum: Mean Sea Level

LOCATION DIAGRAM FOR ND 32-13 (WAC INDEX SHOWN IN BLUE)

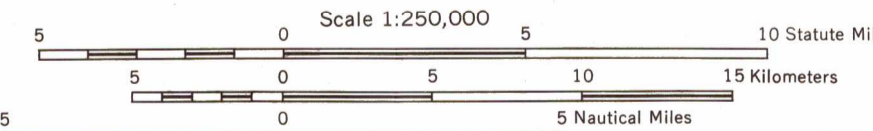
ND 31-12	ND 32-9	NIGER ND 32-10
ND 31-16	ND 32-13	NIGERIA ND 32-14
NC 31-4	NC 32-1	NC 32-2



1965 MAGNETIC DECLINATION FROM TRUE NORTH VARIES FROM 59° (100 MILES WESTERLY FOR THE CENTER OF THE WEST EDGE TO 5° (90 MILES WESTERLY FOR THE CENTER OF THE EAST EDGE)



JOINT OPERATIONS GRAPHIC (GROUND)



ROADS

- All weather, hard surface
- Two or more lanes wide
- Less than two lanes wide
- All weather, loose or light surface
- Two or more lanes wide
- Less than two lanes wide
- Fair or dry weather, loose surface
- Cart track
- Footpath (trail)

RAILROADS

- Normal gauge 1.607m. (5'6")
- Narrow gauge
- Station

BOUNDARIES

- International
- Major administrative
- Primary administrative
- Reservation

VEGETATION

- Woods-brushwood
- Scattered trees, low growth
- Orchards, plantations, vineyards
- Land subject to inundation

AERODROMES (Military or Civil)

- Field limits with runway pattern
- EDNA—Name
- 221—Elevation
- Field limits, with runway pattern unknown
- Field limits unknown, with runway pattern
- Field limits and runway pattern unknown
- SEAPLANE BASE
- SEAPLANE (EMERGENCY)
- HELIPORT

VISUAL AIDS AND OBSTRUCTIONS

- OBSTRUCTION
- 338—Elevation of obstruction top, above sea level
- (79)—Elevation of obstruction top, above ground level
- Group obstruction
- Radio facility obstruction
- Power transmission line
- TERRAIN ELEVATIONS
- HIGHEST KNOWN elevation is 754 meters at 12°08'N, 6°49'E.
- ± Following elevation value indicates accuracy is not within 25 meters.

NOTES

- No obstruction 61 meters or more above ground level are known to exist within this area.
- Figures along roads indicate approximate distances in kilometers.
- On this map a line is generally considered as being 8 to 16 feet (2.44 to 4.88 meters) in width.
- THE REPRESENTATION OF INTERNATIONAL BOUNDARIES IS NOT NECESSARILY AUTHORITY. ALIGNMENT OF ALL BOUNDARIES IS APPROXIMATE.

GRID ZONE DESIGNATION: 32P

TO GIVE A STANDARD REFERENCE ON THIS SHEET TO NEAREST 100 METERS

100,000 M. SQUARE IDENTIFICATION

JK	KK	LK
JJ	KJ	LJ

1. Read letters identifying 100,000 meter squares in which point lies.

2. Locate first VERTICAL grid line to LEFT of point and read LARGE figure labeling the line either in the top or bottom margin, or on the line itself.

3. Estimate tenths from grid line to point.

4. Locate first HORIZONTAL grid line BELOW point and read LARGE figure labeling the line either in the left or right margin, or on the line itself.

5. Estimate tenths from grid line to point.

EXAMPLE: 133000

IF REPORTING BEYOND 9°N S OR 18°E W, include Grid Zone Designation, etc.

SCALE 1:250,000 GUSAU, NIGERIA

SERIES 1501 GROUND SHEET ND 32-13 EDITION 1

BLUE NUMBERED LINES INDICATE THE 10,000 METER UNIVERSAL TRANSVERSE MERCATOR GRID ZONE 32, CLARK 1880 SPHEROID.

USERS SHOULD REFER TO CORRECTIONS, ADDITIONS, AND COMMENTS TO THE NIMA OPERATIONAL HELP DESK: 1-800-450-0808; COMMERCIAL: 314-202-4844; (204) 850-4844; OR WRITE TO DIRECTOR, NATIONAL BAKERY AND MAP-PAINT AGENCY, ATTN: IS, MAIL STOP 1-88, 4800 SANGAMORE ROAD, BETHESDA, MD 20818-5003.

NSN 7643014045802

NIMA REF. NO. 1501XND3213

ED. NO. 001