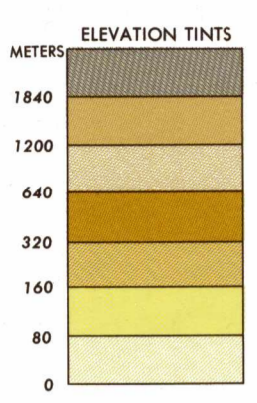
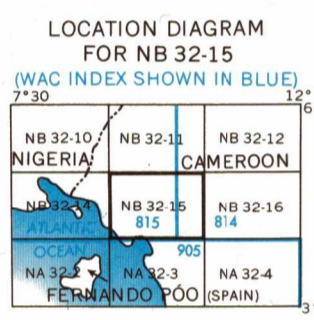


1:250,000 - EDITION 1
BUÉA, CAMEROON
1501G NB 32-15



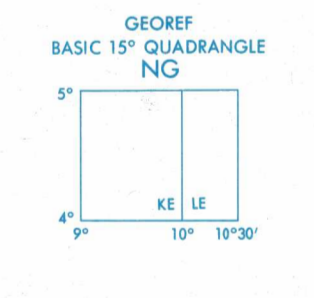
RELIABILITY OF THIS MAP

Area	Area A	Area B	Area C
Accuracy as stated in control points	within 10 meters in horizontal and 10 meters in vertical	within 10 meters in horizontal and 10 meters in vertical	within 10 meters in horizontal and 10 meters in vertical
Latest date of map	1954	1954	1954
Map classification	1954	1954	1954
All other features	1954	1954	1954
Control measurements	1954	1954	1954

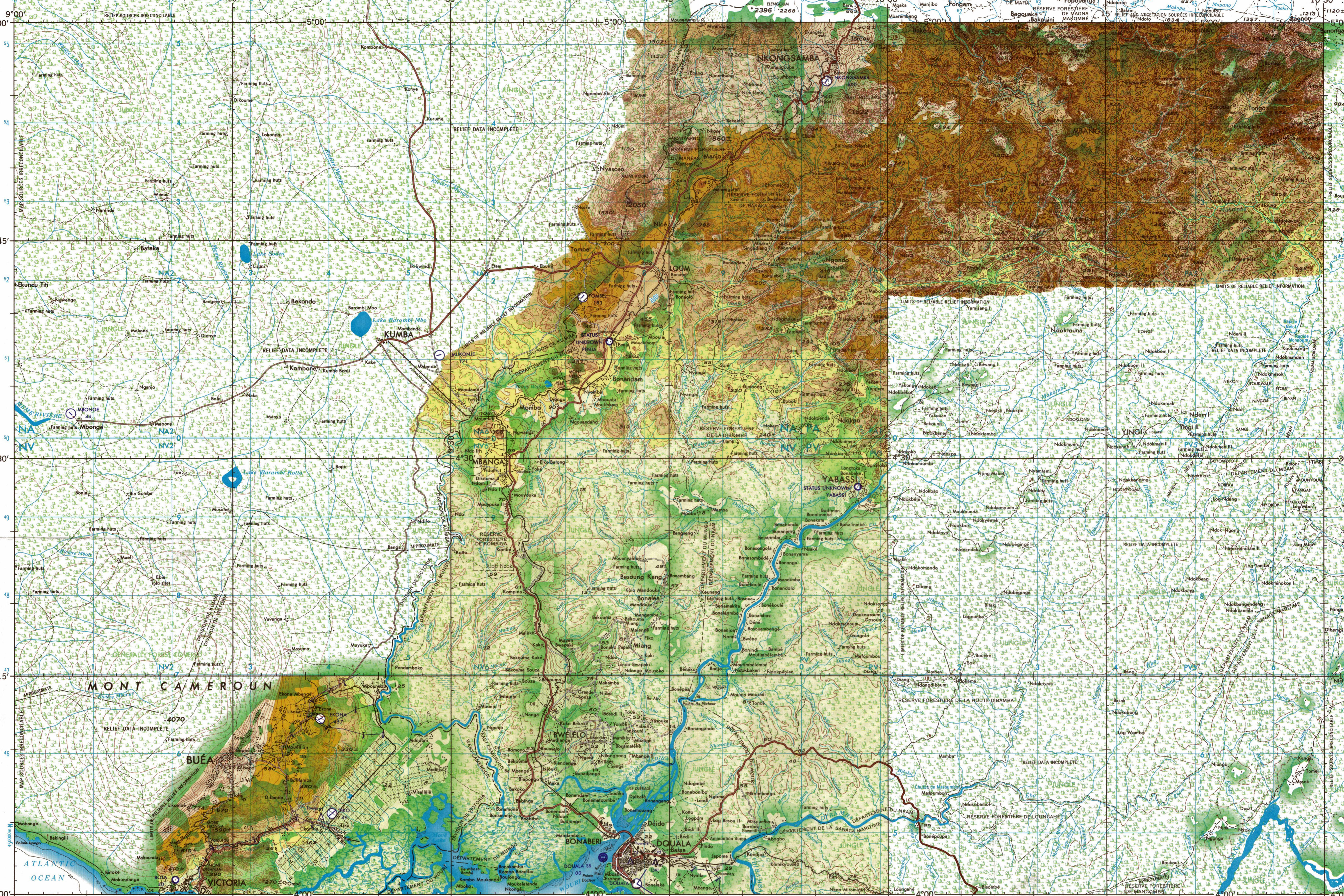


GLOSSARY

Banc	bank
Chute	water fall
Crique	crack
Cr	island
Massif	mountain block
Mont	mountain
Pont	mountain point
Pont	bridge
Rapide	rapids
Reserve Forestière	forest reserve
Rivière	river



MAGNETIC VARIATION FOR 1965 IS 6 1/2° (120 MILLS) WESTERLY OVER THE ENTIRE AREA. (Annual rate of change 5' decrease)



Prepared under the direction of the Defense Intelligence Agency and published by Army Map Service, Corps of Engineers, U.S. Army, Washington, D.C. Compiled in 1966 from best available source materials.

LIMITED DISTRIBUTION Distribution authorized to DA, IAW 10 USC 567 130 & 465. Release authorized to U.S. Civilian, IAW 48 CFR 1.807, 252.246-7020. Refer other requests to Head Office, NIMA, ATTN: Release Officer, Step P-25, Century on "for Official Use Only." Removal of this cover is prohibited.

1:250,000 - EDITION 1
BUÉA, CAMEROON
1501G NB 32-15

GRID ZONE DESIGNATION: 32N

100,000 M. SQUARE IDENTIFICATION	SAMPLE POINT: MOUNTAIN
NA PA	NV
NV PV	

TO GIVE A STANDARD REFERENCE ON THIS SHEET TO NEAREST 1000 METERS

1. Read letters identifying 100,000 meter square to which the point is.

2. Locate first WESTING grid line to LEFT of point and read LARGE figure labeling the line above in the top or bottom margin, or on the line itself.

3. Estimate tenths from grid line to point, and read LARGE figure labeling the line below in the left or right margin, or on the line itself.

4. Estimate tenths from grid line to point.

SAMPLE REFERENCE: NV4574

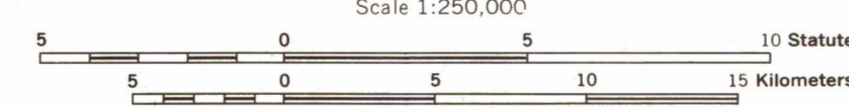
IF REPORTING BEYOND 10° IN ANY DIRECTION, quote Grid Zone Designation, i.e., 32NNV4574

ELEVATIONS IN METERS
DEPTHS IN FATHOMS

LEGEND

ROADS	All weather	Hard surface, two or more lanes wide	Hard surface, one lane wide	Loose or light surface, one lane wide	Fair or dry weather, loose surface	Cart track, Footpath, trail
RAILROADS	Normal gauge 1 m (3'3 3/4")	Narrow gauge				
BOUNDARIES	International	Primary administrative	Reservation	Woods-brushwood	Scattered trees, low growth	Orchard, plantation, vineyard

JOINT OPERATIONS GRAPHIC (GROUND)



CONTOUR INTERVAL 40 METERS
WITH SUPPLEMENTARY CONTOURS AT 20 METER INTERVALS
RELIEF PARTIALLY SHOWN BY FORM LINES

TRANSVERSE MERCATOR PROJECTION
USERS SHOULD REFER TO CORRECTIONS, ADDITIONS, AND COMMENTS TO THE NIMA CUSTOMER HELP DESK (1-800-485-6896; COMMERCIAL 314-290-6032; DESK 416-5032) OR WRITE TO DIRECTOR, NATIONAL IMAGERY AND MAPPING AGENCY, ATTN: COO, MAIL STOP P-27, 4600 SANGAMORE ROAD, BETHESDA, MARYLAND 20814

ELEVATIONS IN METERS
DEPTHS IN FATHOMS

AERODROMES (Military or Civil)

Field limits with runway pattern	EDNA 221
Field limits, with runway pattern unknown	EDNA 221
Field limits and runway pattern	EDNA 221
Field limits and runway pattern unknown	EDNA 221
SEAPLANE BASE	EDNA 221
SEAPLANE (EMERGENCY)	EDNA 221
HELIPORT	EDNA 221

VISUAL AIDS AND OBSTRUCTIONS

OBSTRUCTION	338 (79)
338-Elevation of obstruction top, above sea level (79)-Elevation of obstruction top, above ground level	
Group obstruction	
Radio facility obstruction	
Power transmission line	
TERRAIN ELEVATIONS	HIGHEST elevation is UNKNOWN

NOTES

THE REPRESENTATION OF INTERNATIONAL BOUNDARIES IS NOT NECESSARILY AUTHORITY.

Figures along roads indicate approximate distances in kilometers.

On this map a lane is generally considered as being 8 to 16 feet (2.44 to 4.88 meters) in width.

Reprinted by NIMA 8-99

NSN 7643014045645
NIMA REF. NO. 1501XNB3215