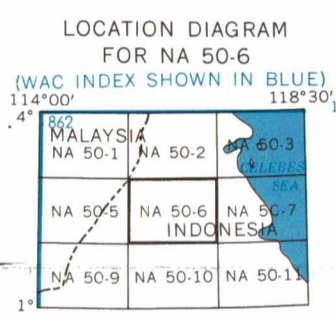


SERIES 1501
SHEET NA 50-6
EDITION 1

RELIABILITY OF THIS SHEET
(as determined by standard practices)

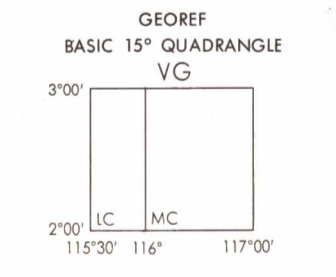
PLOTTING ACCURACY 95% ASSURANCE	AREA	
	AREA I	AREA II
Horizontal	within 1:250,000	within 1:250,000
Vertical	within 1:250,000	within 1:250,000
Contours	undetermined/undetermined	undetermined/undetermined
MAP FEATURE		
DATE OF INFORMATION		
Man-made features	1944-54	1954-36
Vegetation	1944-54	1954-36
Contours	1944	1954-36
Air information	1969	1969

Horizontal Datum: None
Vertical Datum: Approximate Mean Sea Level



GLOSSARY

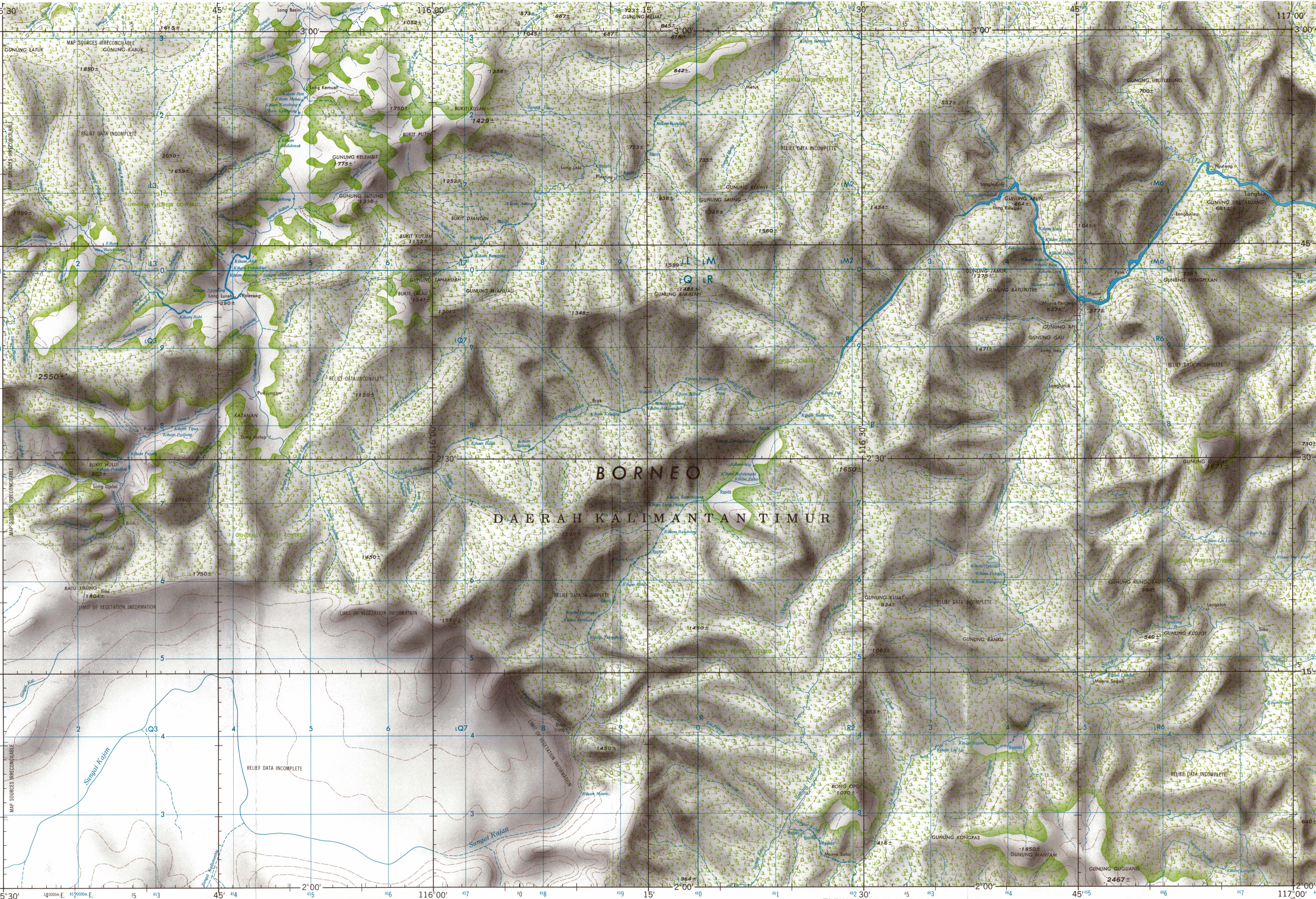
Bivak	camp
Bukit	hill
Gunung	mountain
Kiham	rapids
Liu	stream
Sungai	river stream



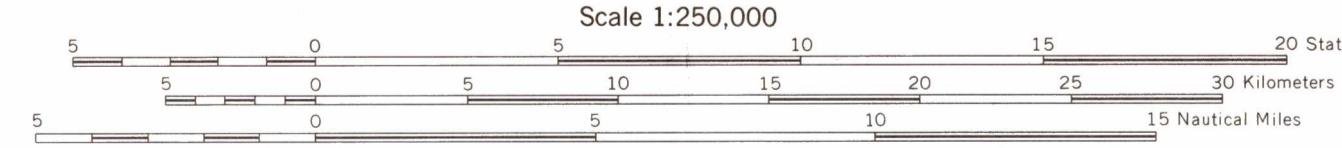
MAGNETIC VARIATION FOR 1945 IS APPROXIMATELY 2° (40 MILES) EASTERLY OVER THE ENTIRE AREA

SCALE 1:250,000
LONGBIA,
INDONESIA

SERIES 1501
SHEET NA 50-6
EDITION 1



JOINT OPERATIONS GRAPHIC (GROUND)



ROADS

All weather, hard surface
Two or more lanes wide
One lane wide
All weather, loose or light surface
Two or more lanes wide
One lane wide
Fair or dry weather, loose surface
Foot path, trail

RAILROADS

Normal gauge (7'6")
Narrow gauge

BOUNDARIES

International
Daerah Telingal
Spot elevation, normal, critical
Woodland: Rice
Plantation, Mangrove
Tropical grass, Marsh or swamp
Nipa

TO GIVE A STANDARD REFERENCE ON THIS SHEET TO NEAREST 100 METERS

SAMPLE POINT: BREAK

1. Read letter identifying 100,000 meter square in which the point lies.
2. Look for VERTICAL grid line to LEFT of point and read LARGE figure labeling the line within the top or bottom margin, or on the line itself.
3. Look for HORIZONTAL grid line BELOW point and read LARGE figure labeling the line within the left or right margin, or on the line itself.
4. Estimate tenths from grid line to point.

SAMPLE REFERENCE: 0883

1:250,000
1:500,000
1:1,000,000

RELIEF SHOWN BY FORM LINES
TRANSVERSE MERCATOR PROJECTION

BLUE NUMBERED LINES INDICATE THE 10,000 METER NETHERLANDS EAST INDIES EQUATORIAL ZONE, BRITISH METRIC GRID, BESSEL SPHEROID
BLACK NUMBERED TICKS INDICATE THE 10,000 METER UNIVERSAL TRANSVERSE MERCATOR GRID, ZONE 50, BESSEL SPHEROID

USERS SHOULD REFER TO THE NATIONAL MAPS AND MAPPING AGENCY FOR THE LATEST INFORMATION ON THIS MAP.

NOTES
No obstructions 61 meters or more above ground level are known to exist within this area.

THE REPRESENTATION OF INTERNATIONAL BOUNDARIES IS NOT NECESSARILY AUTHORITY.

TERRAIN ELEVATIONS
HIGHEST KNOWN elevation is 2550± meters at 2°36'N, 115°54'E
± following elevation value indicates accuracy is not within 50 meters

NSN 764301404597
ED. NO. 001
NMA REF. NO. 1501XNA5006