

SERIES 1501 AIR SHEET SI 34-2 EDITION 3

- POPULATED PLACES: First importance, Second importance, Third importance, Fourth importance, Fifth importance. PIETRIORIA, PIETERSBURG, Stellenbosch, Alexandria, Magdalen.

- ROADS: Dual highway, All weather, hard surface, More than two lanes wide, Two lanes wide, Dial lane wide, All weather, loose or light surface, More than two lanes wide, Two lanes wide, One lane wide, Fair or dry weather, loose surface, Track, Trail, Route marker: National, Other.

- RAILROADS: Normal gauge (3'6" feet), Single track, Multiple track, Station, position, known, unknown, Narrow gauge.

- BOUNDARIES: International, First-order administrative division, Reservation.

- OTHER FEATURES: Not, Known, Landmark feature: Mine, Horizontal control point, Dam or lock, Spot elevation: Normal, Critical, Sand: Distorted surface, Escarpment, Level, Swamp or marsh, Intermittent lake, Dry lake, Well: Spring, Land subject to inundation.

- VEGETATION: Woods: Scattered trees, Not shown.

- TERRAIN ELEVATIONS: HIGHEST KNOWN elevation is 6050 feet at the following coordinates: Geographic: 32°25'S 20°35'E, Grid: DV8113.

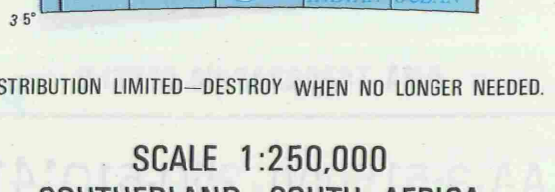
- HYDROGRAPHY: Rocks: smooth, Pier, breakwater, Exposed wreck, Reef, Limit of danger, Foreshore flats, Salt evaporator, Depth curves in feet.

- AERODROMES (Military or Civil): EDNA-Name, EDNA-Home, SO-Length of longest runway to nearest hundreds of feet, S-Soft or unimproved surface, U-Unknown surface, 725-Elevation.

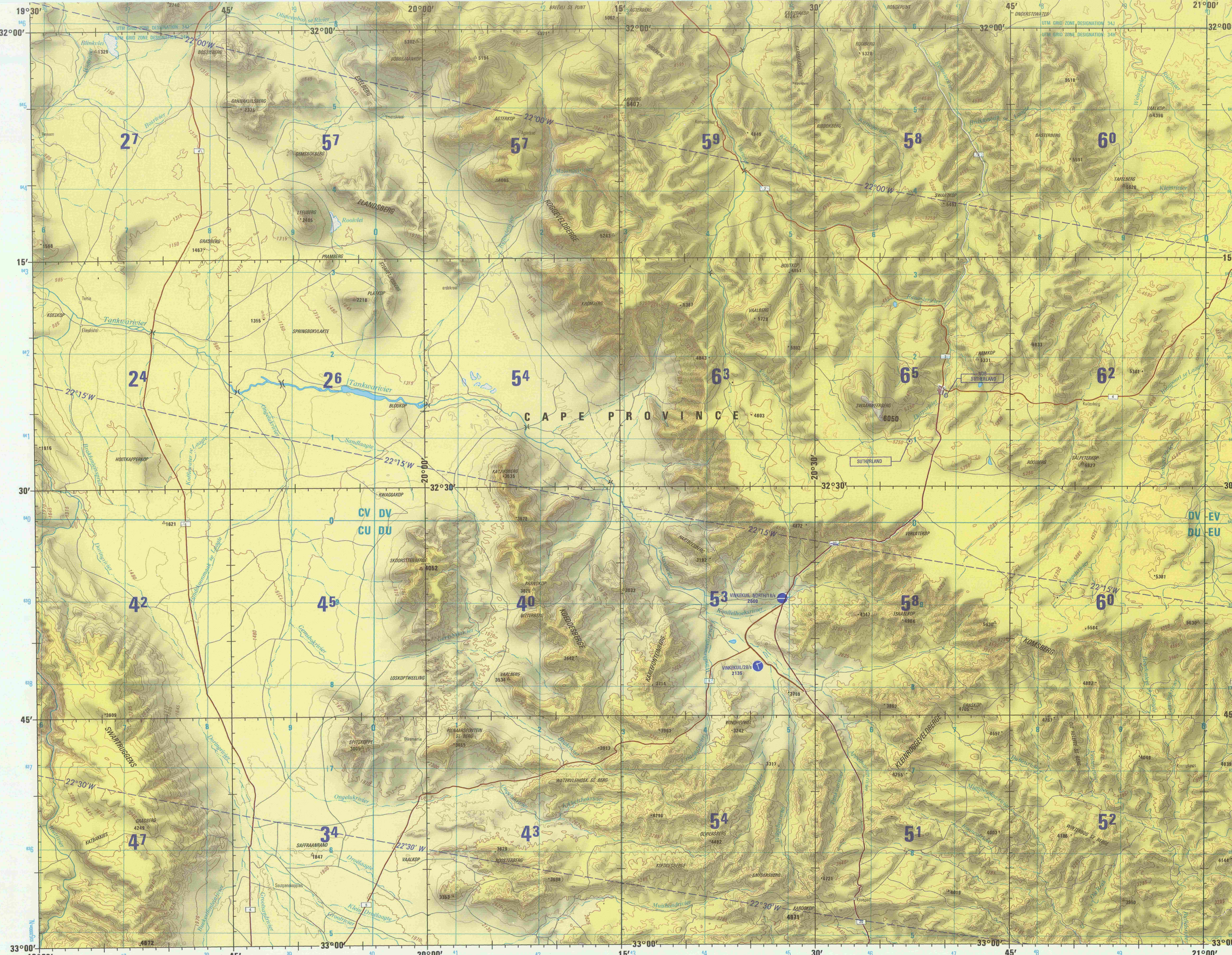
- HELIPORT: Visual aids and obstructions: Obstruction, 1100-Elevation of obstruction top, above sea level, (255)-Elevation of obstruction top, above ground level, Group obstruction, Radio facility obstruction, Power transmission line, Visual ground sign, Aero light: Marine light.

CAUTION AIR INFORMATION CURRENT THROUGH 15 JULY 1982. Consult NOTAMS and Flight Information Publications for the latest air information; the DOD Aeronautical Chart Updating Manual or MOD (U.K.) Aeronautical Chart Amendment document, for other chart revision information.

ATTENTION THIS CHART CONTAINS MAXIMUM ELEVATION FIGURES (MEF). The Maximum Elevation Figures shown in quadrangles bounded by ticked lines of latitude and longitude are represented as HIGHEST KNOWN and HIGHEST OBSERVED of each above mean sea level. The MEF is based on information available concerning the highest known features in each quadrangle, including terrain and obstructions (trees, towers, antennas, etc.). In areas of extensive variable relief, the MEF is shown by a wide spread across the area. EXAMPLE: 12,500 feet 125.

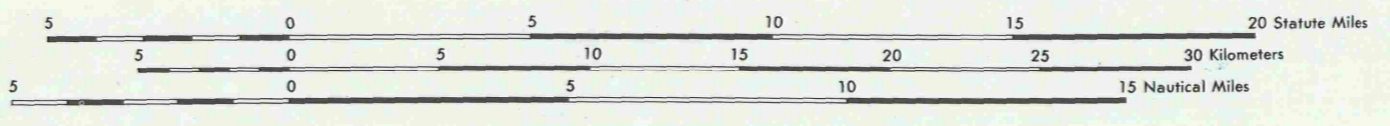


DISTRIBUTION LIMITED—DESTROY WHEN NO LONGER NEEDED. SCALE 1:250,000 SOUTHERLAND, SOUTH AFRICA. SERIES 1501 AIR SHEET SI 34-2 EDITION 3. SERIES 1501 COMPANION SHEET IS EDITION 3.



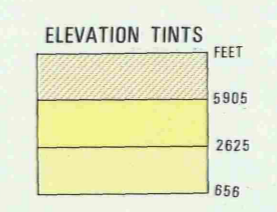
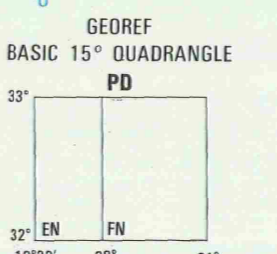
JOINT OPERATIONS GRAPHIC (AIR)

Scale 1:250,000. CONTOUR INTERVAL APPROXIMATELY 165 FEET.



USERS SHOULD REFER CORRECTIONS, ADDITIONS, AND COMMENTS FOR IMPROVING THIS PRODUCT TO US USERS: DIRECTOR, DEFENSE MAPPING AGENCY, ARLINGTON CENTER, ST LOUIS, MO, MISSOURI 63118. ATTN: PP (UK USERS) DIRECTORATE OF MILITARY SURVEY, MINISTRY OF DEFENCE, LONDON.

- GLOSSARY: Berg (mountain, hill), Bluff (mountain, hill), Fontaine (spring), Point (mountain pass), Peak (point, hill, mountain), Ridge (cave), Summit (mountain), Hill (well, spring), Peak (peak, mountain), Mountain (mountain), Ridge (mountain, ridge), River (stream), Stream (hill, mountain, ridge), Spring (well, spring), Trench (trench, pass), Valley (valley, ravine, pass), Well (well, spring), Wetland (marsh, swamp), Wood (wood, forest).



RELIABILITY OF THIS GRAPHIC: Compiled from best available source materials. Horizontal Datum: Arc 1950. Vertical Datum: Mean Sea Level. Transverse Mercator Projection.

NOTES: Only obstructions 200 feet or more above ground level are shown. Elevation information and obstructions have been extracted from the most reliable source available. However, there is no assurance that all powerlines and obstructions are shown or that their locations and heights are correct. On this graphic a lane is generally considered as being 3.2 meters (10.5 feet) in width.

SERIES 1501 AIR SHEET SI 34-2 EDITION 3. SERIES 1501 COMPANION SHEET IS EDITION 3.