

SERIES 1501 AIR SHEET SH 35-5 EDITION 3

SERIES 1501 COMPANION SHEET IS EDITION 2

LEGEND

**POPULATED PLACES**

First importance  
Second importance  
Third importance  
Fourth importance

**PRETORIA**  
**PIETERSBURG**  
Standerton  
Alexandria

**ROADS**

Dual highway  
All weather, hard surface  
More than two lanes wide  
Two lanes wide  
One lane wide  
All weather, loose or light surface  
More than two lanes wide  
Two lanes wide  
One lane wide  
Fair or dry weather, loose surface  
Track, Trail  
Route marker: National, Other

**RAILROADS**

Normal gauge (3'6" feet)  
Station, position  
Narrow gauge

**BOUNDARIES**

International  
First order administrative division  
Reservation

**OTHER FEATURES**

Hut, Kraal, Landmark feature, Mine  
Horizontal control point, Dam or lock  
Spot elevation, Normal, Critical  
Sand, Disturbed surface  
Escarpment, Levee  
Swamp or marsh, Intermittent lake, Dry lake  
Well, Spring, Land subject to inundation

**VEGETATION**

Woods, Scattered trees  
Orchards, plantations, vineyards, Mangrove

**TERRAIN ELEVATIONS**

HIGHEST KNOWN elevation is 5469 feet at the following coordinates:  
Geographic: 29°57'S, 25°19'E  
Grid: LS3786

**HYDROGRAPHY**

Rocks, smooth  
Pier, breakwater  
Exposed wreck  
Reef  
Limit of danger  
Foreshore flats, Salt evaporator  
Depth curve in feet

**AERODROMES (Military or Civil)**

Field limits with runway pattern  
EDNA-Name  
50-Length of longest runway to nearest hundreds of feet  
5-Soft or unimproved surface  
u-Unknown surface  
725-Elevation

Field limits, with runway pattern unknown  
Field limits unknown, with runway pattern  
Field limits and runway pattern unknown

**HELIPORT**

**VISUAL AIDS AND OBSTRUCTIONS**

Obstruction  
1108-Elevation of obstruction top, above sea level  
(259)-Elevation of obstruction top, above ground level

Group obstruction  
Radio facility obstruction  
Power transmission line  
Visual ground sign  
Aero light; Marine light

**RADIO FACILITIES**

RADIO RANGE LF/MF  
MULTIPLE RADIO FACILITIES

**CONTROLLED AIRSPACE**

ADIZ

**CAUTION**  
**AIR INFORMATION CURRENT THROUGH 25 JUNE 1982**  
Consult NOTAMS and Flight Information Publications for the latest air information; the DOD Aeronautical Chart Updating Manual or MOD (U.K.) Aeronautical Chart Amendment document, for other chart revision information.

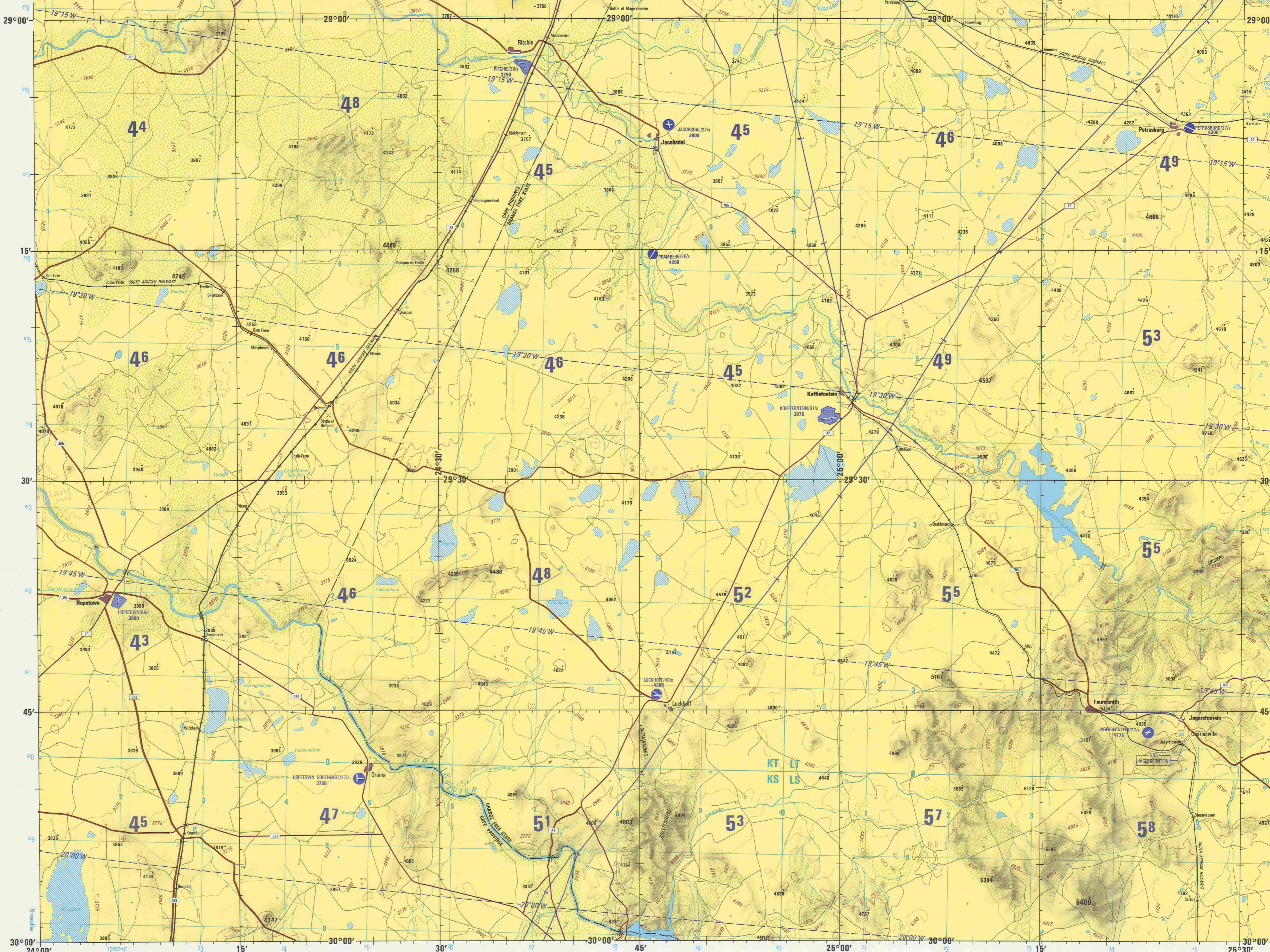
LINE OF EQUAL MAGNETIC VARIATION FOR 1980  
(Annual rate of change 7' decrease)

**ATTENTION**  
**THIS CHART CONTAINS MAXIMUM ELEVATION FIGURES (MEF)**  
The Maximum Elevation Figures shown in quadrangles bounded by ticked lines of latitude and longitude are represented in THOUSANDS and HUNDREDS of feet above mean sea level. The MEF is based on information available concerning the highest known feature in each quadrangle, including terrain and obstructions (trees, towers, antennas, etc.). In areas of extensive available relief, the MEF is shown by a note spaced across the area.  
**125**  
EXAMPLE: 12,500 feet

**LOCATION DIAGRAM**

(WAC INDEX SHOWN IN RED/BROWN)

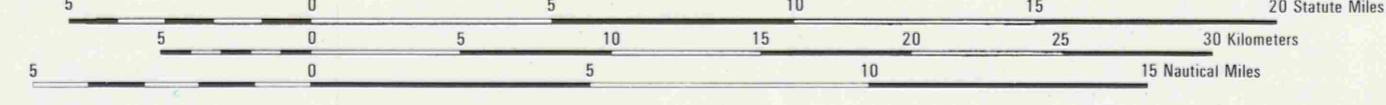
21	22	23	24	25	26
SH 34-15	SH 34-16	SH 34-17	SH 34-18	SH 34-19	SH 34-20
SH 34-3	SH 34-4	SH 34-5	SH 34-6	SH 34-7	SH 34-8
SH 34-11	SH 34-12	SH 34-13	SH 34-14	SH 34-15	SH 34-16
SH 34-15	SH 34-16	SH 34-17	SH 34-18	SH 34-19	SH 34-20



Prepared and published by the Defense Mapping Agency  
Hydrographic/Topographic Center, Washington, D. C.  
Compiled October 1981.

**JOINT OPERATIONS GRAPHIC (AIR)**

SCALE 1:250,000



CONTOUR INTERVAL APPROXIMATELY 165 FEET

THE BLUE NUMBERED LINES INDICATE THE 10,000 METER UNIVERSAL TRANSVERSE MERCATOR GRID, ZONE 34, CLARK 1980 SPHEROID.

**CONVERSION OF ELEVATIONS**

FEET	METERS	FEET	METERS
1000	305	10000	3048
900	274	9000	2743
800	244	8000	2438
700	213	7000	2134
600	183	6000	1829
500	152	5000	1524
400	122	4000	1219
300	91	3000	914
200	61	2000	610
100	31	1000	305

**SAMPLE 1000 METER GRID SQUARE**

**SAMPLE 1000 METER REFERENCE**

- Read across identifying the 10,000 meter square in which the point lies.
- Read down (including the HORIZONTAL) grid line left of point. Roman numerals (I-IX) are used here and line to point.
- Read large number (including the HORIZONTAL) grid line below Roman numerals (I-IX) across from grid line to point.

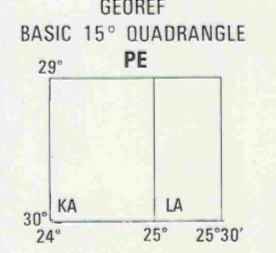
Example: AB1234

WHEN REPORTING OUTSIDE THE GRID ZONE DESIGNATION AREA IN WHICH THE POINT LIES, PREFIX THE GRID ZONE DESIGNATION.

Example: 35AB1234

**GLOSSARY**

- Bergfelde: mountain(s), hill(s)
- Dam
- Ferret: reservoir
- Ferris wheel
- Gop: spring
- Kop: mountain, hill
- River
- Stream
- Spruit



**RELIABILITY OF THIS GRAPHIC**

Compiled from best available source materials.

Horizontal Datum: Arc 1950  
Vertical Datum: Mean Sea Level  
Transverse Mercator Projection

9-82 Printed by the Defense Mapping Agency Hydrographic/Topographic Center

**NOTES**

Only obstructions 200 feet or more above ground level are shown. Powerline information and obstructions have been extracted from the most reliable source available. However, there is no assurance that all powerlines and obstructions are shown or that their locations and heights are correct.

On this graphic a line is generally considered as being 10 feet (3.2 meters) in width.

THE REPRESENTATION OF INTERNATIONAL BOUNDARIES IS NOT NECESSARILY AUTHORITY.

**ELEVATION TINTS**

FEET	TINT
2625	[Color swatch]

DISTRIBUTION LIMITED—DESTROY WHEN NO LONGER NEEDED.

SCALE 1:250,000  
KOFFIEFONTEIN, SOUTH AFRICA

SERIES 1501 AIR SHEET SH 35-5 EDITION 3

SERIES 1501 COMPANION SHEET IS EDITION 2

SERIES 1501 AIR SHEET SH 35-5 EDITION 3

SERIES 1501 COMPANION SHEET IS EDITION 2

DNA STOCK NO. 1501AS19505