

SERIES 1501 AIR SHEET SH 34-9 EDITION 2

- POPULATED PLACES**
- First importance
 - Second importance
 - Third importance
 - Fourth importance
 - Fifth importance
- ROADS**
- Dual highway
 - All weather, hard surface
 - More than two lanes wide
 - Two lanes wide
 - One lane wide
 - All weather, loose or light surface
 - More than two lanes wide
 - Two lanes wide
 - One lane wide
 - Fair or dry weather, loose surface
 - Track, Trail
- RAILROADS**
- Normal gauge 1.067 meters (3'6")
 - Single track
 - Multiple track
 - Station, position:
 - known
 - unknown
- BOUNDARIES**
- Narrow gauge
 - International
 - First-order administrative division
 - Reservation
- OTHER FEATURES**
- Mar. Kaal Landmark Feature: Mine
 - Navigational control point, Date or lack
 - Spot elevation: Normal, Critical
 - Sand: Distorted surface
 - Escarpment: Levee
 - Swamp or marsh: Intermittent lake: Dry lake
 - Well: Spring: Land subject to inundation
- VEGETATION**
- Woods: Scattered trees
 - Orchards: plantations, vineyards; Mangrove
- TERRAIN ELEVATIONS**
- HIGHEST KNOWN elevation is 5598 feet at the following coordinates:
 Geographic: 30°28'S 18°05'E
 Grid: 8B2129
- HYDROGRAPHY**
- Rocks: Swath
 - Pen: breakerwater
 - Egged wreck
 - Reef
 - Limit of danger
 - Foreshore flats: Salt evaporator
 - Depth curves in feet
- AERODROMES (Military or Civil)**
- Field limits with runway pattern
 - EDNA-Name
 - 50-Length of longest runway to nearest hundreds of feet
 - Soft or unimproved surface
 - unknown surface
 - 725-Elevation
 - Field limits, with runway pattern unknown
 - Field limits unknown, with runway pattern
 - Field limits and runway pattern unknown
- HELIPORT**
- VISUAL AIDS AND OBSTRUCTIONS**
- Obstruction
 - 1108-Elevation of obstruction top, above sea level.
 - (259) Elevation of obstruction top, above ground level.
 - Group obstruction
 - Radio facility obstruction
 - Power transmission line
 - Visual ground sign
 - Aero light: Marine light
- RADIO FACILITIES**
- RADIO RANGE LF/MF
 - MULTIPLE RADIO FACILITIES
 - CONTROLLED AIRSPACE
 - ADIZ

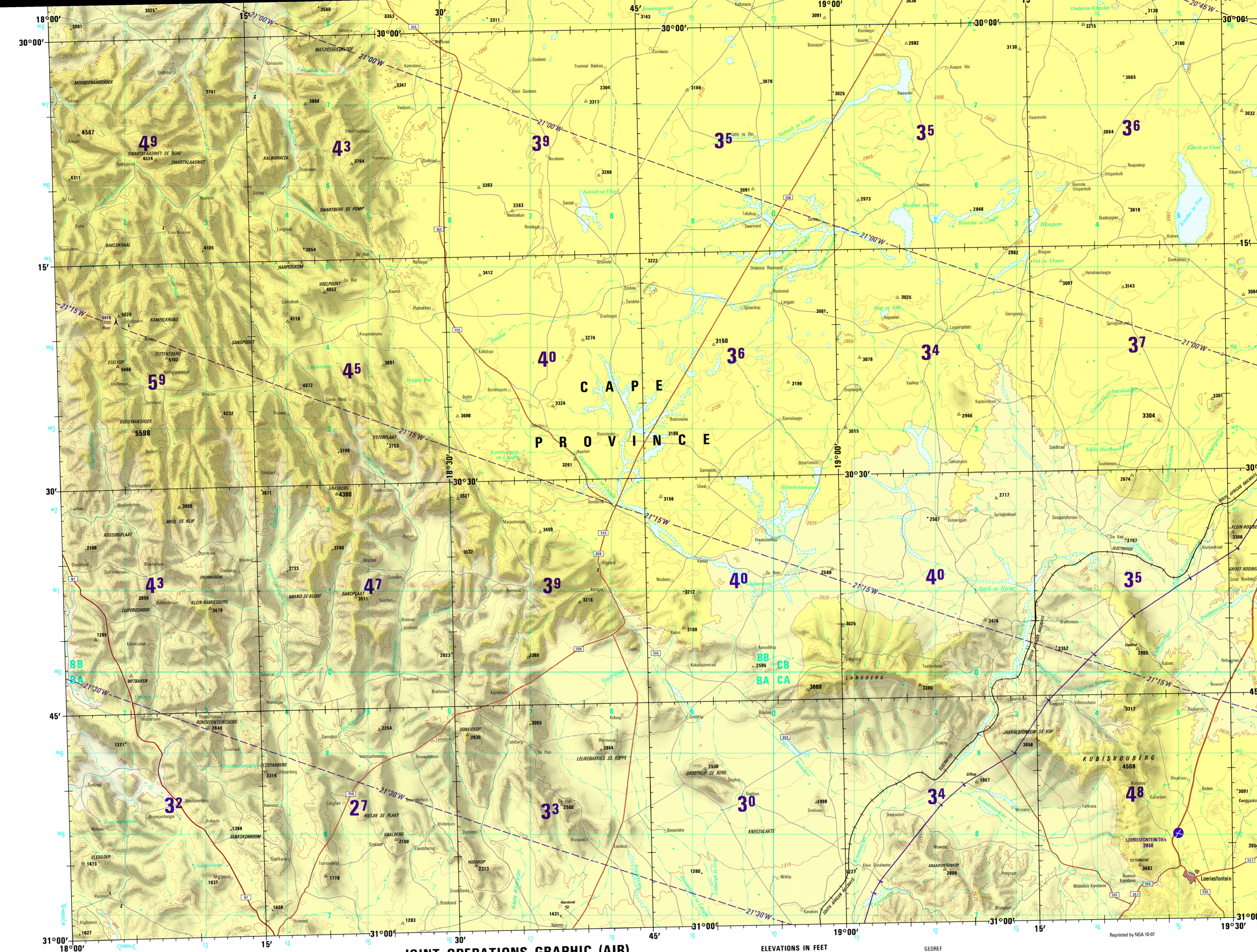
CAUTION
 AIR INFORMATION CURRENT THROUGH 20 JULY 1982
 Consult NOTAMS and Flight Information Publications for the latest air information; the DOD Aeronautical Chart Updating Manual or AOD (U.K.) Aeronautical Chart Amendment document, for other chart revision information.

LINE OF EQUAL MAGNETIC VARIATION FOR 1980
 (Annual rate of change 5' decrease)

ATTENTION
 THIS CHART CONTAINS MAXIMUM ELEVATION FIGURES (MEF)
 The Maximum Elevation Figures shown in quadrangles bounded by ticked lines of latitude and longitude are represented in THOUSANDS and HUNDREDS of feet above mean sea level. The MEF is based on information available concerning the highest known feature in each quadrangle, including terrain and obstructions (trees, towers, antennas, etc.). In areas of extensive variable relief, the MEF is shown by a note spread across the area.
 EXAMPLE: 12,500 feet
125

LOCATION DIAGRAM
 (WAC INDEX SHOWN IN RED/BLUE)

SH 33-3	SH 34-4	SH 33-8	SH 34-5	SH 34-6	SH 34-7
SH 33-8	SH 34-9	SH 34-10	SH 34-11	SH 34-12	SH 34-13
SH 34-13	SH 34-14	SH 34-15	SH 34-16	SH 34-17	SH 34-18
SH 34-18	SH 34-19	SH 34-20	SH 34-21	SH 34-22	SH 34-23



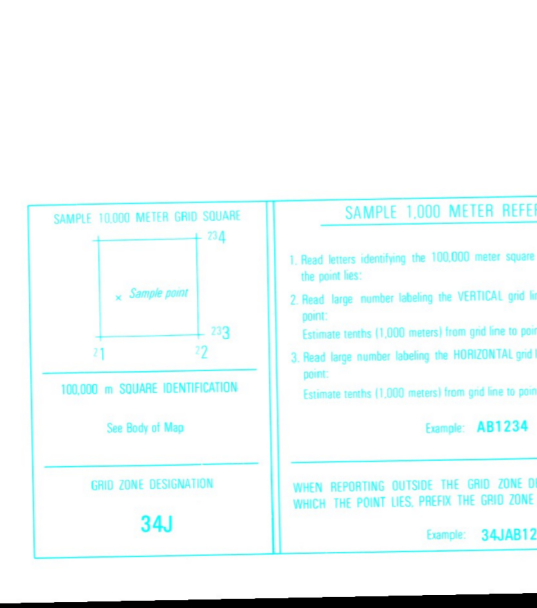
Prepared and published by the Defense Mapping Agency Hydrographic/Topographic Center, Washington, D. C. Compiled in 1982.



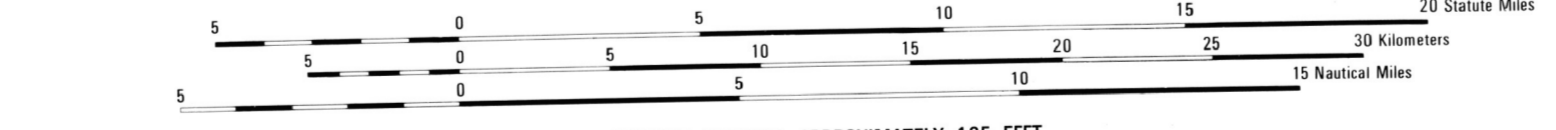
CONVERSION OF ELEVATIONS

FEET	METERS
1000	305
2000	610
3000	915
4000	1220
5000	1525
6000	1830
7000	2135
8000	2440
9000	2745
10000	3050
11000	3355
12000	3660
13000	3965
14000	4270
15000	4575
16000	4880
17000	5185
18000	5490
19000	5795
20000	6100

ELEVATIONS IN FEET



SCALE 1:250,000



CONTOUR INTERVAL APPROXIMATELY 165 FEET

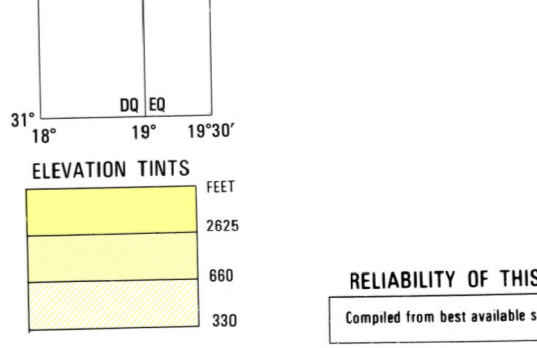
USERS SHOULD REFER CORRECTIONS, ADDITIONS, AND COMMENTS TO THE NGA ENTERPRISE SERVICE DESK: 1-800-455-6889; COMMERCIAL 301-227-8811; DSN 268-8811; UNCLASSIFIED FAX: ENTERPRISESERVICE@NSA.MIL; SUPPORT: EDC@NSA.MIL; OR WRITE TO: DIRECTOR, NATIONAL GEOSPATIAL-INTELLIGENCE AGENCY, ATTN: ESC, MAIL STOP D-240, 4800 SANGAMORE ROAD, BETHESDA, MD 20818-9003.

ELEVATIONS IN FEET

GLOSSARY

- Berg berg: mountain, hill
- drift: drift, hill, ford
- fontein: spring
- hoek: headland, mountain
- klip: hill, mountain, cliff, crag
- Mod: valley, ravine, pass
- Kop: mountain
- Kraai: hill, mountain
- Langer: water course
- natuurreserv: nature reserve
- pan: pan
- pas: mountain pass
- Provinsie: first-order administrative division
- River: river
- spek: stream
- vlaait: plain
- Vlakte: pan

GEOREF BASIC 15° QUADRANGLE



RELIABILITY OF THIS GRAPHIC
 Compiled from best available source materials.

NOTES
 Only obstructions 200 feet or more above ground level are shown. A line is generally considered as being 3.2 meters (10.5 feet) in width on the Freeways and National Routes. The reliability of road information is unguaranteed. THE REPRESENTATION OF INTERNATIONAL BOUNDARIES IS NOT NECESSARILY AUTHORITY. Powerline information and obstructions have been extracted from the most reliable source available. However, there is no assurance that all powerlines and obstructions are shown or that their locations and heights are correct.

Horizontal Datum: Arc 1950
 Vertical Datum: Mean Sea Level
 Transverse Mercator Projection

NSN 7641014101786
 NGA Ref No: 1501ASH3409

SCALE 1:250,000
 LOERIESFONTEIN, SOUTH AFRICA
 SERIES 1501 AIR SHEET SH 34-9 EDITION 2