

SERIES 1501 AIR SHEET SH 34-5 EDITION 3

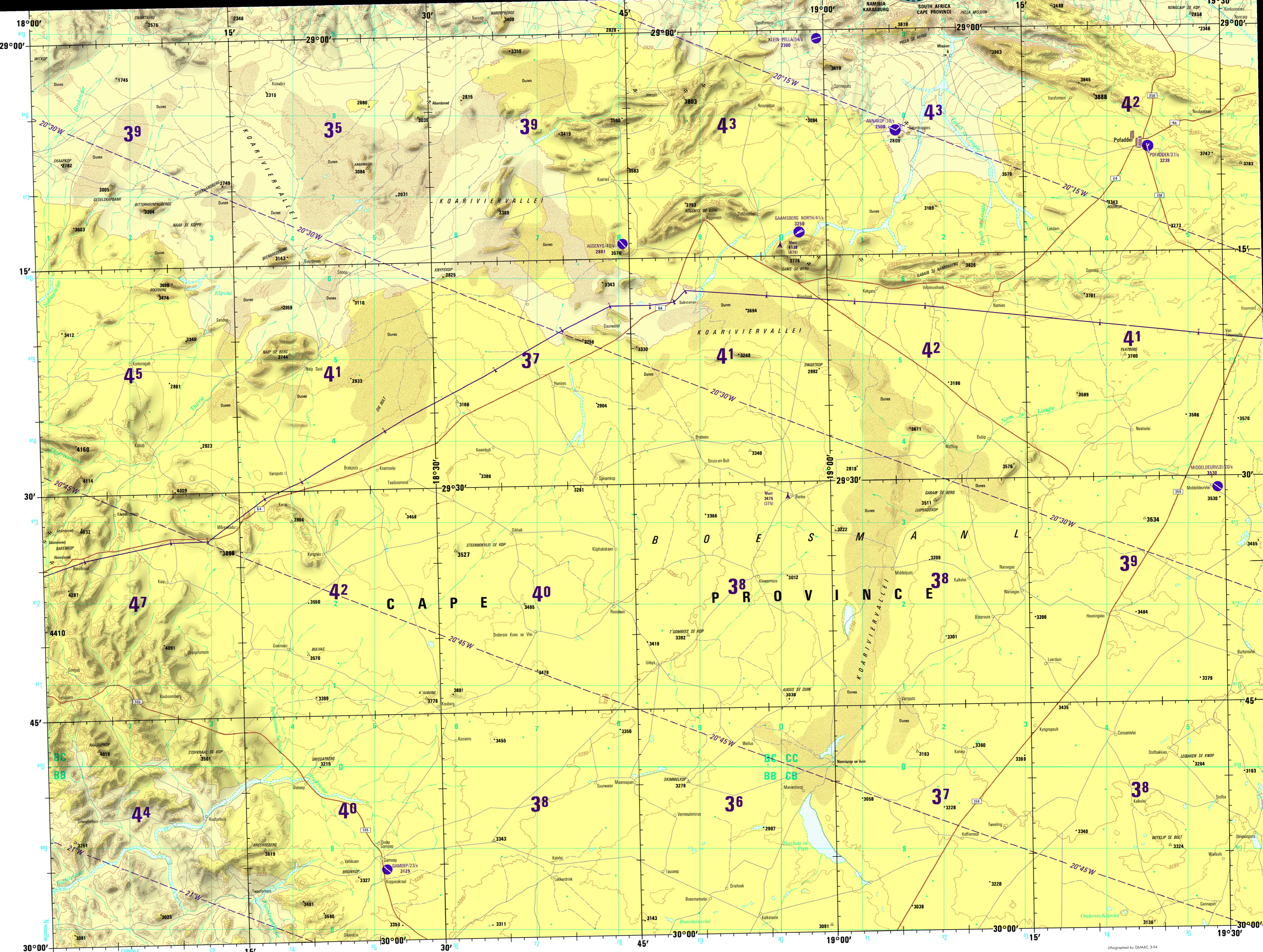
- POPULATED PLACES**
- First importance: **PRETORIA**
 - Second importance: **PIETERSBURG**
 - Third importance: **Standerton**
 - Fourth importance: **Alexandria**
 - Fifth importance: **Magudu**
- ROADS**
- Dual highway: 4 LANES DUAL
 - All weather, hard surface: 4 LANES
 - More than two lanes wide: 2 LANES
 - One lane wide: 1 LANE
 - All weather, loose or light surface: 4 LANES
 - More than two lanes wide: 2 LANES
 - One lane wide: 1 LANE
 - Fair or dry weather, loose surface: 2 LANES
 - Track, Trail: 1 LANE
 - Route marker: National, Other
- RAILROADS**
- Normal gauge 1.067 meters (3'6")
 - Station, position: Known, Unknown
 - Narrow gauge: Known, Unknown
- BOUNDARIES**
- First order administrative division: International, National, Provincial, District, Local
- OTHER FEATURES**
- Mut. Kvaal, Landmark feature, Mine, Horizontal control point, Dam or lock, Spot elevation, Normal, Critical, Sand, Disturbed surface, Escarpment, Levee, Swamp or marsh, Intermittent lake, Dry lake, Well, Spring, Land subject to inundation
- VEGETATION**
- Woods, Scattered trees, Orchards, plantations, vineyards, Mangrove
- TERRAIN ELEVATIONS**
- HIGHEST KNOWN elevation is **4410** feet at the following coordinates: 29°30' E, 18°00' S
- HYDROGRAPHY**
- Rocks, wash, Pier, breakwater, Exposed wreck, Reef, Disturbed surface, Limit of danger, Foreslope flats, Salt evaporator, Depth curves in feet
- AERODROMES (Military or Civil)**
- Field limits with runway pattern: EDNA/50/4, 725
 - Field limits with runway pattern unknown: EDNA-Name, 50-Length of longest runway to nearest hundreds of feet, S-Soil or unpaved surface, U-Unknown surface, 725-Elevation
- HELIPORT**
- Obstruction: 1108-Elevation of obstruction top, above sea level, (259)-Elevation of obstruction top, above ground level, Group obstruction, Radio facility obstruction, Power transmission line, Visual ground sign, Aero light, Marine light
- RADIO FACILITIES**
- RADIO RANGE LF/MF, MULTIPLE RADIO FACILITIES, CONTROLLED AIRSPACE, ADIZ, ATLANTIC ADIZ

CAUTION
AIR INFORMATION CURRENT THROUGH 15 NOVEMBER 1982
Consult NOTAMS and Flight Information Publications for the latest air information; the DOD Aeronautical Chart Updating Manual or MOD (U.K.) Aeronautical Chart Amendment document, for other chart revision information.

ATTENTION
THIS CHART CONTAINS MAXIMUM ELEVATION FIGURES (MEF)
The Maximum Elevation Figures shown in quadrangles bounded by ticked lines of latitude and longitude are represented in THOUSANDS and HUNDREDS of feet above mean sea level. The MEF is based on information available concerning the highest known feature in each quadrangle, including terrain and obstructions (trees, towers, antennas, etc.). In areas of extensive unrelieved relief, the MEF is shown by a note spaced across the area.
EXAMPLE: 12,500 feet **125**

LOCATION DIAGRAM

SG 33-15	SG 33-16	SG 34-1	SG 34-14	SG 34-15
SG 33-3	SH 34-5	SH 34-1	SH 34-2	SH 34-3
SH 33-8	SH 34-5	SH 34-6	SH 34-7	
SH 33-12	SH 34-9	SH 34-10	SH 34-11	
	SH 34-13	SH 34-14	SH 34-15	



Prepared and published by the Defense Mapping Agency Hydrographic/Topographic Center, Washington, D.C. Compiled in 1982.

ELEVATIONS IN FEET

JOINT OPERATIONS GRAPHIC (AIR)

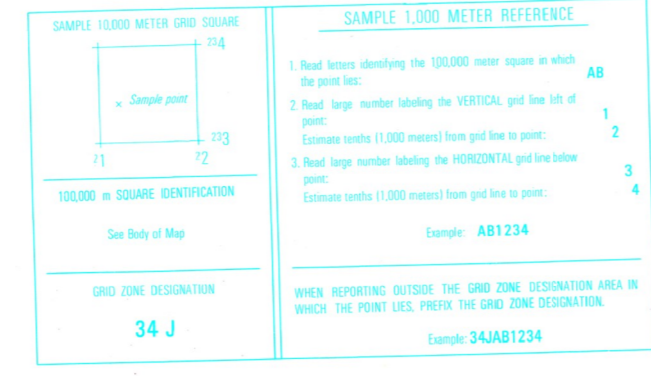
SCALE 1:250,000

ELEVATIONS IN FEET

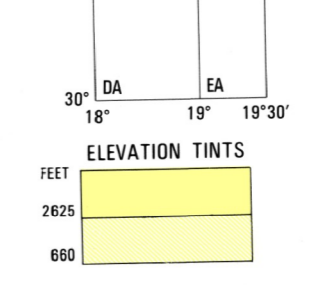
GEOREF BASIC 15° QUADRANGLE

CONVERSION OF ELEVATIONS

FEET	METERS	FEET	METERS
1000	304.8	10000	3048
900	274.3	9000	2743
800	243.8	8000	2438
700	213.3	7000	2134
600	182.9	6000	1829
500	152.4	5000	1524
400	121.9	4000	1219
300	91.4	3000	914
200	61.0	2000	610
100	30.5	1000	305



- GLOSSARY**
- Berg, berg: mountain
 - Duin: dune
 - Hoek: mountain
 - Klip: mountain
 - Kop: mountain
 - Koppies: mountains
 - Plaat: first order administrative division
 - Plas: pond
 - Rivier: stream
 - Vlei: pan



RELIABILITY OF THIS GRAPHIC
Compiled from best available source materials.

Horizontal Datum: Arc 1950
Vertical Datum: Mean Sea Level
Transverse Mercator Projection

Photographed by DMAAC 3/84
Reprinted by NGA 06/07

NOTES
Only obstructions 200 feet or more above ground level are shown. A line is generally considered as being 3.2 meters (10.5 feet) in width on the Freeways and National Roads. The reliability of road information is undetermined. THE REPRESENTATION OF INTERNATIONAL BOUNDARIES IS NOT NECESSARILY AUTHORITY. Powerline information and obstructions have been extracted from the most reliable source available. However, there is no assurance that all powerlines and obstructions are shown or that their locations and heights are correct.

NSN 7841014103585
NSA Ref No: 1501ASH3405