

SERIES 1501 AIR SHEET SH 22-10 EDITION 2
SERIES 1501 COMPANION SHEET IS EDITION 1

LEGEND — SINAIS CONVENCIONAIS

- POPULATED PLACES — LOCALIDADES**
- 1st importance RIO DE JANEIRO
 - 2nd importance FLORIANÓPOLIS
 - 3rd importance SANTIAGO
 - 4th importance
 - 5th importance
 - 6th importance

- ROADS — RODOVIAS**
- All weather, hard surface
 - Transitável todo o ano, revestimento sólido
 - Two or more lanes
 - Duas ou mais vias
 - One lane
 - Uma via
 - All weather, loose surface
 - Transitável todo o ano, revestimento solto
 - Two or more lanes
 - Duas ou mais vias
 - One lane
 - Uma via
 - Fair or dry weather, loose surface
 - Transitável em tempo bom e seco, revestimento solto
 - Cart track Caminho
 - Trail (hunting) Trilha
 - Route marker, Federal, Secondary
 - Prefixo de estrada: Federal, Estadual

- RAILROADS — ESTRADAS DE FERRO**
- Normal gauge 1m. (3'3 3/4") Single track
 - Normal gauge 1m. (3'3 3/4") Multiple track
 - Narrow gauge
 - Bitola estreita

- BOUNDARIES — LIMITES**
- International
 - Estadual

- OTHER FEATURES**
- Church Igreja
 - School Escola
 - Mine Mina
 - Landmark feature Aspectos salientes do terreno
 - Spot elevation — normal, critical
 - Cota — normal, crítica
 - Horizontal control point
 - Ponto trigonométrico
 - Intermittent lake Lagoa intermitente
 - Swamp or marsh; Rice
 - Banhado ou brejo; Arroz
 - Land subject to inundation
 - Terreno sujeito a inundação
 - Woods — brushwood
 - Floresta — mata e bosque
 - Orchard, Vineyard, Plantation; Palm
 - Pomar, Vinhedo, Plantação; Palmeiras

TERRAIN ELEVATIONS — COTAS TERRESTRES

HIGHEST KNOWN elevation is 1972 feet at 30°23'N, 51°59'W
A maior altura (cota) conhecida nesta carta é de 1972 pés (em) 30°23'N, 51°59'O. O sinal — a seguir a uma cota indica que o seu valor é aproximado em 100 pés.

- AERODROMES (Military or Civil)**
- EDNA/50/s/725
 - Field limits with runway pattern
 - Limites do campo de aviação com o traçado da pista
 - EDNA—Name Designações
 - 50—length of longest runway in nearest hundreds of feet
 - Comprimento aproximado em centenas de pés da pista mais longa
 - S—Soft or unimproved surface
 - Pavimento mole ou não preparado
 - U—Unknown surface Pavimento desconhecido
 - 725—Elevation Cota
 - Field limits unknown, with runway pattern
 - Limites do campo desconhecido, com o traçado da pista

- RADIO FACILITIES — RADIO-AJUDA**
- RADIO RANGE LF/MF
 - RADIO FAIXA LF/MF
 - RADIO HURK
 - R B-D-F-RNG
 - PABS

- MULTIPLE RADIO FACILITIES — CONJUNTO DE RADIO-AJUDA**
- VISUAL AIDS AND OBSTRUCTIONS — AUXÍLIOS À NAVEGAÇÃO E OBSTÁCULOS**
- Obstruction Obstrução
 - 1108
 - (259) — Elevation of obstruction top, above sea level
 - Cota de cima do obstáculo, acima do nível do mar
 - (259) — Elevation of obstruction top, above ground level
 - Cota de cima do obstáculo, acima do nível do terreno

CAUTION

AIR INFORMATION CURRENT THROUGH 23 APRIL 1975
Consult Notices to Airmen (NOTAM) and Flight Information Publications (FIP) for the latest air information; the Chart Updating Manual (CHUM) for other chart revision information.

- LINES OF EQUAL MAGNETIC VARIATION FOR 1975**
(Annual rate of change, 9' increase)
LINHAS DE VARIAÇÃO MAGNÉTICA IDÊNTICA PARA 1975 (Índice anual de mudança, 9' de aumento)

DISTRIBUTION LIMITED—DESTROY WHEN NO LONGER NEEDED

LOCATION DIAGRAM
(CONTOUR SHOWN IN BLUE)

—ARGENTINA SH 21-1 SH 22-1 SH 22-2 SH 22-3 SH 22-4
—BRAZIL SH 21-8 SH 22-5 SH 22-6 SH 22-7
—OCEANO ATLÂNTICO SH 21-12 SH 22-9 SH 22-10 SH 22-11
—URUGUAY SH 21-4 SH 22-13 SH 22-14 SH 22-15

ATTENTION

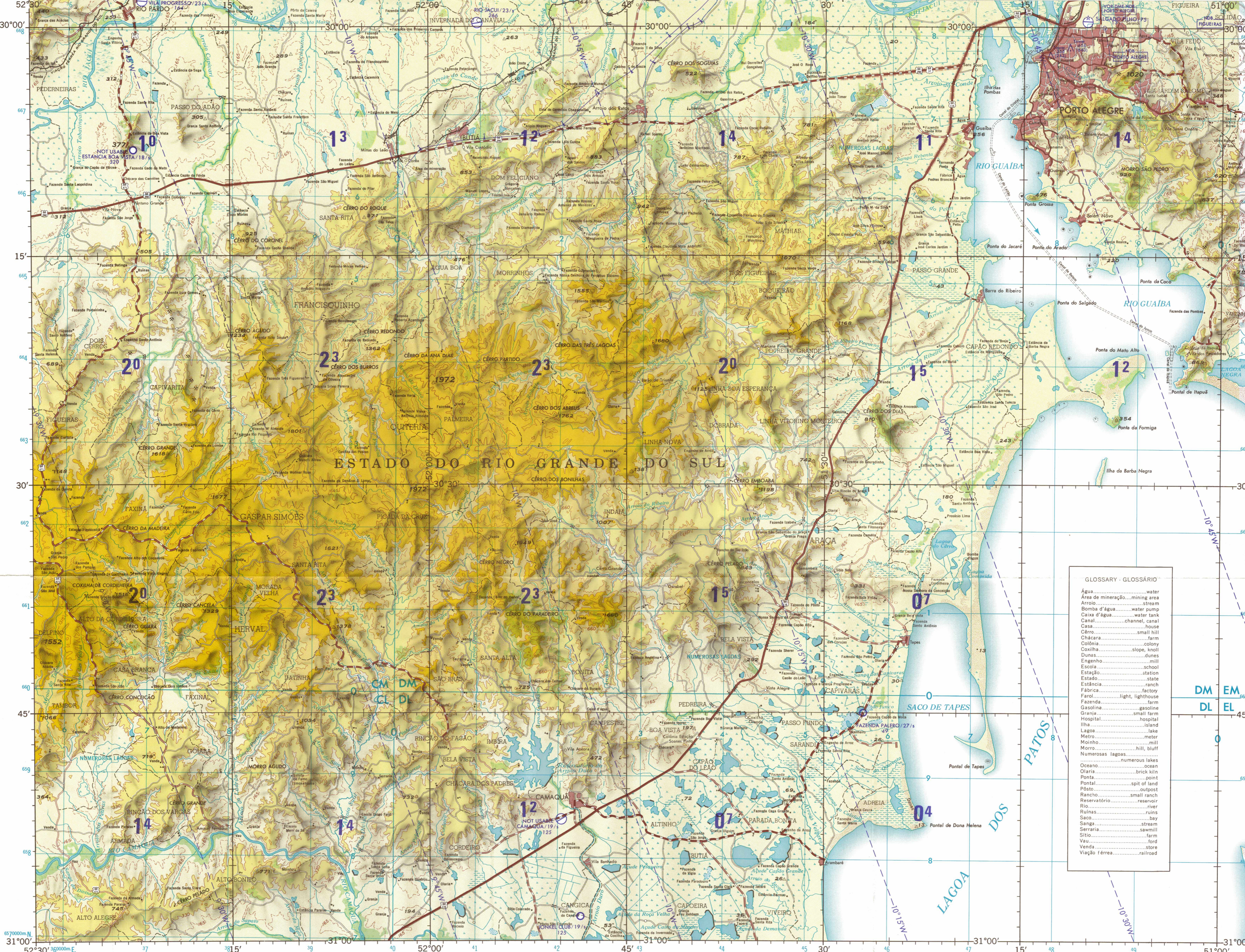
THIS CHART CONTAINS MAXIMUM ELEVATION FIGURES (MEF)

The Maximum Elevation Figures shown in quadrangles bounded by ticked lines of latitude and longitude are represented in THOUSANDS and HUNDREDS of feet above mean sea level. The MEF is based on information available concerning the highest known features in each quadrangle, including terrain and obstructions (towers, towers, etc.). In areas of extensive available relief, the MEF is shown by a note across the area.

EXAMPLE: 12,500 feet **125**

SCALE 1:250,000
PORTO ALEGRE, BRAZIL

SERIES 1501 AIR SHEET SH 22-10 EDITION 2
SERIES 1501 COMPANION SHEET IS EDITION 1



Prepared and published under the direction of the Department of Defense by the U.S. Army Topographic Command, Washington, D.C. in cooperation with the SGE, Brazil. Compiled in 1971.

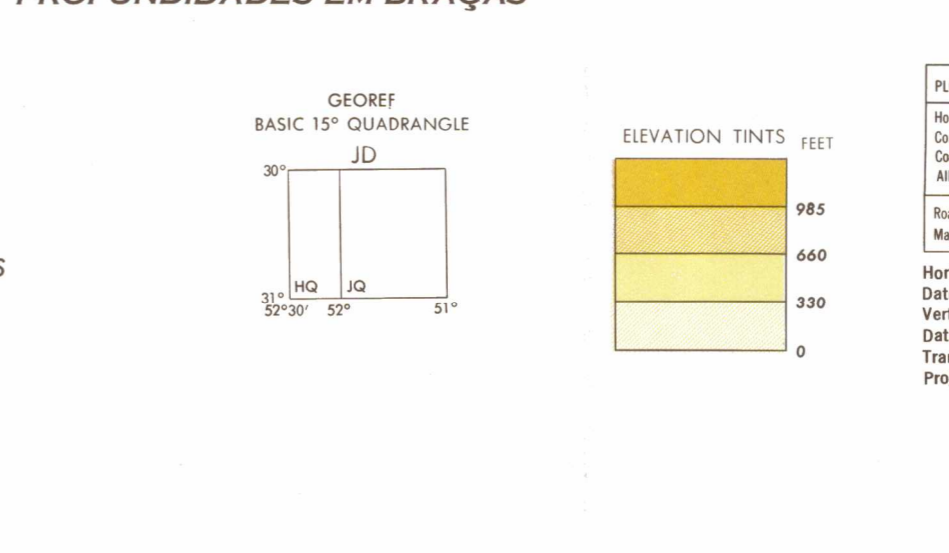
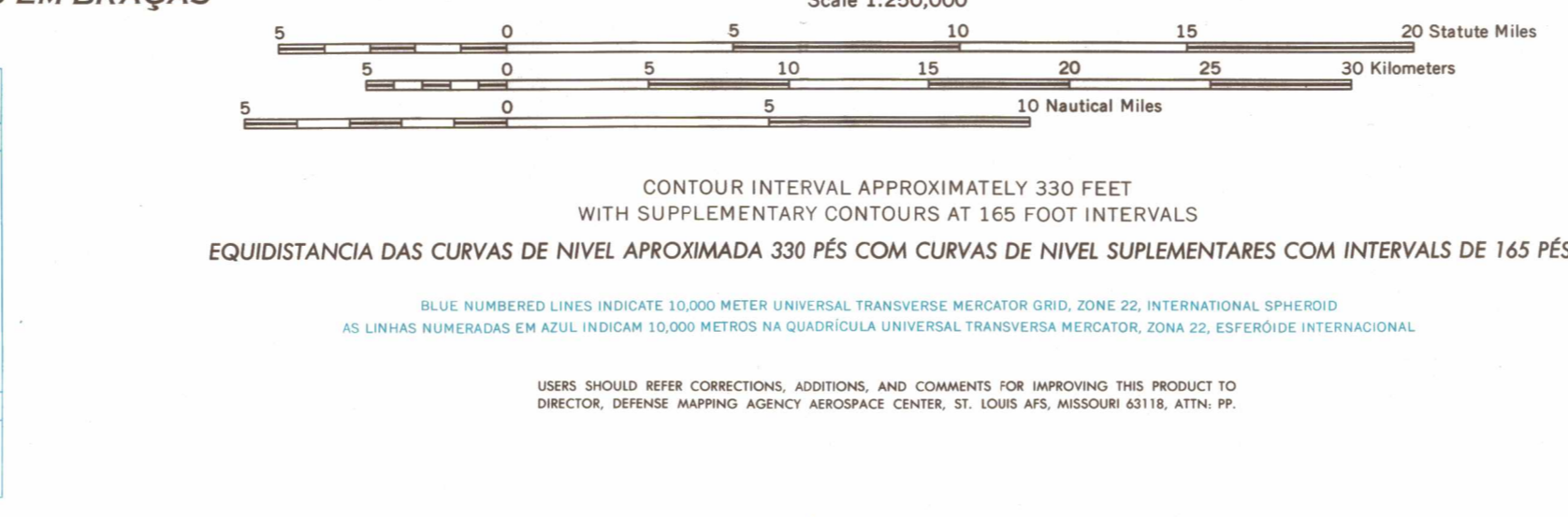
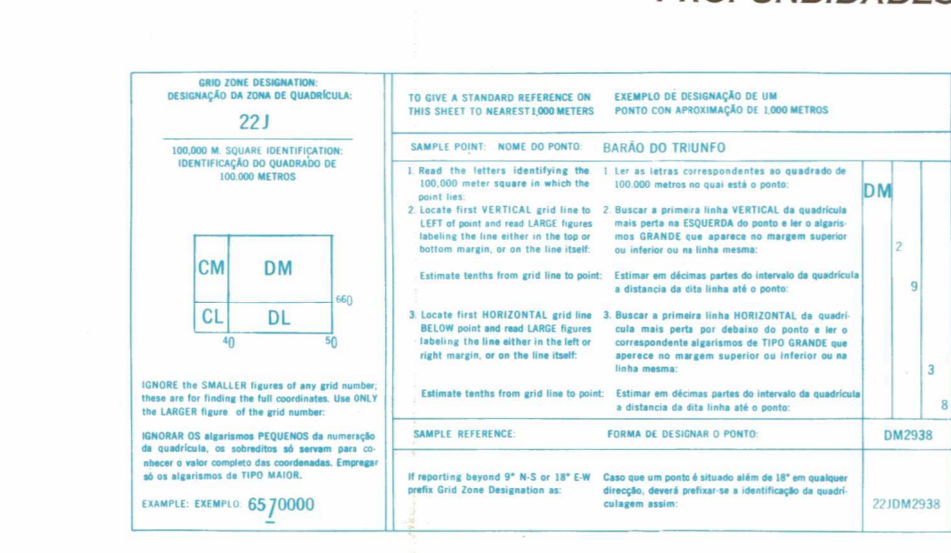
ELEVATIONS IN FEET COTAS EM PÉS DEPTHS IN FATHOMS PROFUNDIDADES EM BRAÇAS

JOINT OPERATIONS GRAPHIC (AIR)

Scale 1:250,000

ELEVATIONS IN FEET COTAS EM PÉS DEPTHS IN FATHOMS PROFUNDIDADES EM BRAÇAS

Scale 1:250,000



NOTES — NOTAS

Only obstructions 200 feet or more above ground level are shown. The information on obstructions is not necessarily complete. Somente mostram-se os obstáculos com altura igual ou superior a 200 pés acima da terra. A informação sobre os obstáculos não é sempre completa.

Names for symbolized populated places are omitted where information is not available. Os nomes de povoados convenencionais são omitidos quando falta informação toponímica.

THE REPRESENTATION OF INTERNATIONAL BOUNDARIES IS NOT NECESSARILY AUTHENTICATIVE. A REPRESENTAÇÃO DE LIMITES INTERNACIONAL NÃO É NECESSARIAMENTE OFICIAL.

RELIABILITY OF THIS SHEET
(As determined by standard practices)

PLOTTING ACCURACY 90% ASSURANCE

Horizontal Datum: Córrego Alegre
Datum Horizontal: Córrego Alegre
Vertical Datum: Mean Sea Level
Datum Vertical: Nível Médio do Mar
Projection: Universal Transverse Mercator
Projeto: Universal Transversa de Mercator

STOCK NO. 1501ASH2210