

SERIES 1501 AIR SHEET SF 38-14 EDITION 1

COMPANION SERIES 1501 SHEET IS EDITION 1

**LEGEND**

**POPULATED PLACES**

- Over 20,000
- 5,000 to 20,000
- 2,000 to 5,000
- 500 to 2,000
- Less than 500

**ROADS**

- All weather, hard surface
- Two or more lanes
- One lane
- All weather, loose surface
- Two or more lanes
- One lane
- Fair or dry weather, loose surface
- Cart track
- Trail (footpath)

**ROUTE MARKER**

- National

**RAILROADS**

- Normal gauge 1.07 m. (3'6")
- Narrow gauge
- Station

**BOUNDARIES**

- International
- Primary administrative
- Reservation

**HORIZONTAL CONTROL POINTS**

- Autonomic position
- Trigonometric position
- Spot elevation, Normal; Critical

**VEGETATION**

- Woods-brushwood
- Scattered trees
- Orchard, plantation, vineyard
- Dunes, Crescent, Lateral
- Sand
- Distorted surface
- Escarpment; Levee
- Isolated rock; Mound; Cliff
- Church; School
- Kraal; Landmark feature or object; Mine
- Well; Spring; Salt evaporator
- Wadi; Sebaks
- Land subject to inundation
- Swamp, marsh; Rice
- Depth curves in meters
- Wreck; Exposed; Sunken
- Rocks; Awash; Sunken
- Foreshore flat; Mangrove
- Limit of dangers; Reef
- Area name

**TERRAIN ELEVATION**

HIGHEST KNOWN ELEVATION IS 3596 feet at 22°59' S, 45°01' E.

**AERODROMES (Military or Civil)**

- Field limits with runway pattern
- EDNA—Name
- 50—Length of longest runway to nearest hundreds of feet
- Soft or unimproved surface
- 725—Elevation
- Field limits, with runway pattern unknown
- Field limits unknown, with runway pattern
- Field limits and runway pattern unknown

**SEAPLANE BASE**

**SEAPLANE (EMERGENCY)**

**HELIPORT**

**RADIO FACILITIES**

- RADIO RANGE LUMF
- MULTIPLE RADIO FACILITIES

**MAGNETIC VARIATION**

ISOGONIC LINE

**VISUAL AIDS AND OBSTRUCTIONS**

- Obstruction
- 1108—Elevation of obstruction top, above sea level
- (259)—Elevation of obstruction top, above ground level
- Group obstruction
- Radio facility obstruction
- Power transmission line
- Ocean station vessel (Normal position)
- Visual ground sign
- Aero light; Marine light

**CAUTION**

AIR INFORMATION CURRENT THROUGH 17 AUGUST 1967

Consult Notices to Airmen (NOTAMS) and Flight Information Publications (FLIPs) for the latest air information; the Chart Updating Manual (CHUM) for other chart revision information.

HIGHEST TERRAIN elevations for each 15 MINUTE QUADRANGLE are represented in THOUSANDS and HUNDREDS of feet. They are omitted where relief information is inadequate. A minus sign (-) following the figure indicates that the figure is based on an estimated elevation.

EXAMPLES: 51 81-

**NOTES**

Names for symbolized populated places are omitted where information is not available or where density of detail does not permit their inclusion.

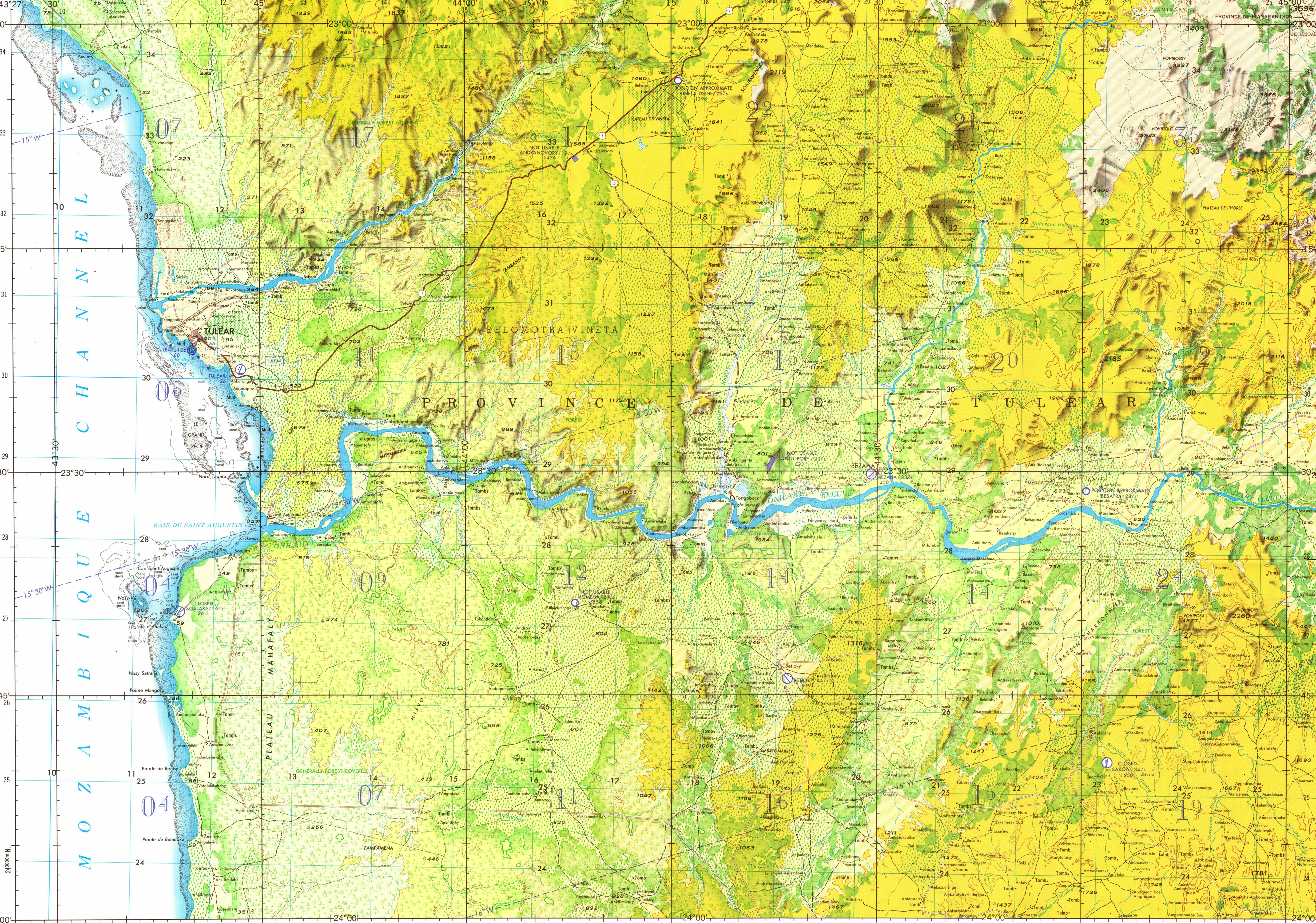
LINEs OF EQUAL MAGNETIC VARIATION FOR 1965 (Annual rate of change = 5' increase)

SCALE 1:250,000

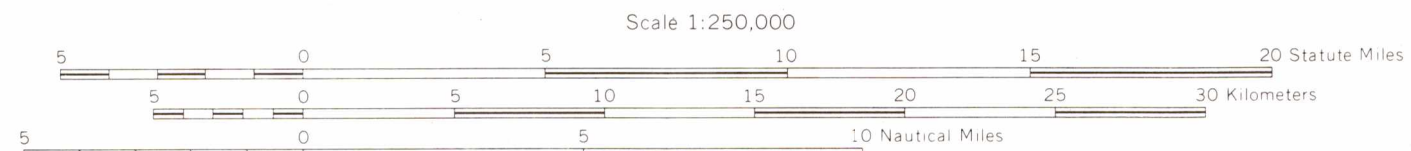
TULÉAR, MALAGASY REPUBLIC

SERIES 1501 AIR SHEET SF 38-14 EDITION 1

COMPANION SERIES 1501 SHEET IS EDITION 1



**JOINT OPERATIONS GRAPHIC (AIR)**



CONTOUR INTERVAL APPROXIMATELY 330 FEET WITH SUPPLEMENTARY CONTOURS AT 165 FOOT INTERVALS

LABORÉ PROJECTION (Origin 18°54' S., 45°26'13.95" E. of Greenwich)

BLACK NUMBERED LINES INDICATE THE 10,000 METER MADAGASCAR GRID, HAYFORD 1909, INTERNATIONAL SPHEROID

USERS SHOULD REFER CORRECTIONS, ADDITIONS, AND COMMENTS TO THE NIMA CUSTOMER HELP DESK: 1-800-450-0888 OR WRITE TO: DIRECTOR, NATIONAL MAPS AND MAPPING AGENCY, ATTN: CDD, MAIL STOP P-37, 6800 SANGARE ROAD, BETHESDA, MD 20818-5003



AERONAUTICAL APPROACH CHARTS (Code: AC) and/or AERONAUTICAL CHARTS (Code: AC) completely within this area are discontinued. Those that are partially within this area should be retained until publication of the adjacent Joint Operations Graphic (Air), 1501 AIR. Consult the DOD Bulletin for publication and discontinuance notices.

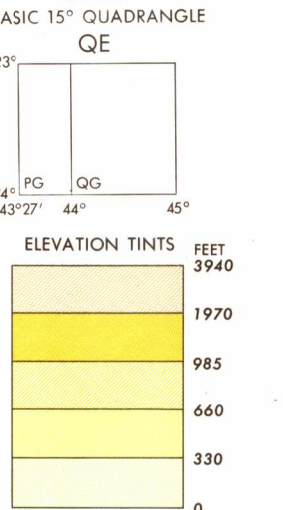
TO GIVE A STANDARD REFERENCE ON THIS SHEET TO NEAREST 1000 METERS

IGNORE the SMALLER figures of any grid number. Use only for finding the full coordinates. Use ONLY the LARGER figures of the grid number; example: 240000

SAMPLE POINT	Example
1. Locate first VERTICAL grid line to LEFT of point and read LARGE figure below the line within the top or bottom margin, or on the line itself. Estimate tenths from grid line to point.	18 1
2. Locate first HORIZONTAL grid line BELOW point and read LARGE figure below the line within the left or right margin, or on the line itself. Estimate tenths from grid line to point.	30 4
SAMPLE REFERENCE:	181304

**GLOSSARY**

- Baie.....bay
- Cap.....cape
- EST.....estuary
- Fleuve.....river, stream
- LAC.....lake
- Nord.....north
- Nosy.....island
- Ouest.....west
- Plateau.....plateau
- Pointe.....point
- Récif.....reef
- Rivière.....river
- Ruisseau.....river, stream
- Sud.....south

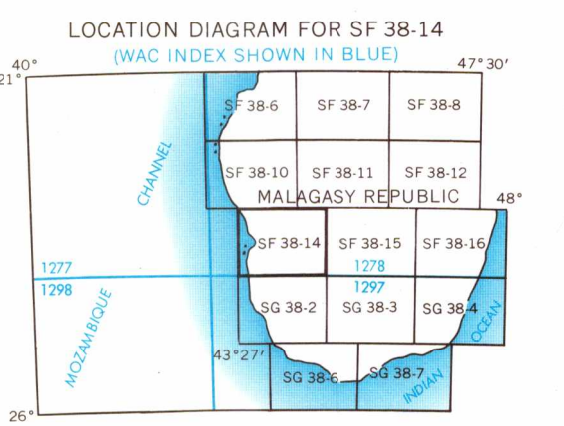


**RELIABILITY OF THIS MAP** (as determined by standard practices)

Accuracy, as related to control of map:	within 100 ft	within 164 ft
Horizontal positions	±0.50	±0.50
Vertical positions	±0.50	±0.50

Date of map information: 1964  
 Vertical datum: 1958  
 All other features: 1958-63  
 Control base map: 1958-58

Road classification not verified by reconnaissance  
 Horizontal datum: Unknown  
 Vertical datum: Mean Sea Level



NSN 764101477811

NIMA REF. NO. 1501ASF3814

ED. NO. 001