

**LEGEND**

**POPULATED PLACES**

- Over 20,000: TULÉAR
- 5,000 to 20,000: MANAKARA
- 2,000 to 5,000: IHOSY
- 500 to 2,000: Ejeda
- Less than 500: Milanco

**ROADS**

- All weather, hard surface: Principal, Secondary
- Two or more lanes: 3 LANES
- One lane: 2 LANES
- All weather, loose surface: Two or more lanes
- One lane: 2 LANES
- Fair or dry weather, loose surface: 2 LANES
- Cart track: 2 LANES
- Trail (footpath): 2 LANES

**ROUTE MARKER**

- National: (Symbol)

**RAILROADS**

- Normal gauge 1.07 m. (3'6"): Single track, Multiple track
- Narrow gauge: (Symbol)
- Station: (Symbol)

**BOUNDARIES**

- International: (Symbol)
- Primary administrative: (Symbol)
- Reservation: (Symbol)

**HORIZONTAL CONTROL POINTS**

- Astronomic position: (Symbol)
- Trigonometric position: (Symbol)
- Spot elevation, Normal, Critical: 792 1640

**VEGETATION**

- Woods-brushwood: (Symbol)
- Scattered trees: (Symbol)
- Orchard, plantation, vineyard: (Symbol)
- Dunes, Crescent, Lateral: (Symbol)
- Sand: (Symbol)
- Distorted surface: (Symbol)
- Escarpment, Levee: (Symbol)
- Isolated rock, Mound, Cliff: (Symbol)
- Church, School: (Symbol)
- Kraal; Landmark feature or object, Mine: (Symbol)
- Well, Spring; Salt evaporator: (Symbol)
- Wadi, Sekoha: (Symbol)
- Land subject to inundation: (Symbol)
- Swamp, marsh; Rice: (Symbol)
- Depth curves in meters: (Symbol)
- Wreck, Exposed, Sunken: (Symbol)
- Rocks, Awash, Sunken: (Symbol)
- Foreshore flat; Mangrove: (Symbol)
- Limit of danger; Reef: (Symbol)

**TERRAIN ELEVATION**

HIGHEST KNOWN elevation is 1552 feet at 20°15' S, 45°01' E.

**AERODROMES (Military or Civil)**

- EDNA—Name
- 50—Length of longest runway to nearest hundreds of feet
- 1—Soft or unimproved surface
- 725—Elevation

**Field limits with runway pattern**

- Field limits, with runway pattern unknown: (Symbol)
- Field limits unknown, with runway pattern: (Symbol)
- Field limits and runway pattern unknown: (Symbol)

**SEAPLANE BASE**

**SEAPLANE (EMERGENCY)**

**HELIPORT**

**RADIO FACILITIES**

- RADIO RANGE LF/MF: (Symbol)
- MULTIPLE RADIO FACILITIES: (Symbol)

**MAGNETIC VARIATION**

ISOGONIC LINE: -7° E

**VISUAL AIDS AND OBSTRUCTIONS**

- Obstruction: 1108 (259)
- 1108—Elevation of obstruction top, above sea level. (259)—Elevation of obstruction top, above ground level.
- Group obstruction: (Symbol)
- Radio facility obstruction: (Symbol)
- Power transmission line: (Symbol)
- Ocean station-vessel (Normal position): (Symbol)
- Visual ground sign: (Symbol)
- Aero light, Marine light: (Symbol)

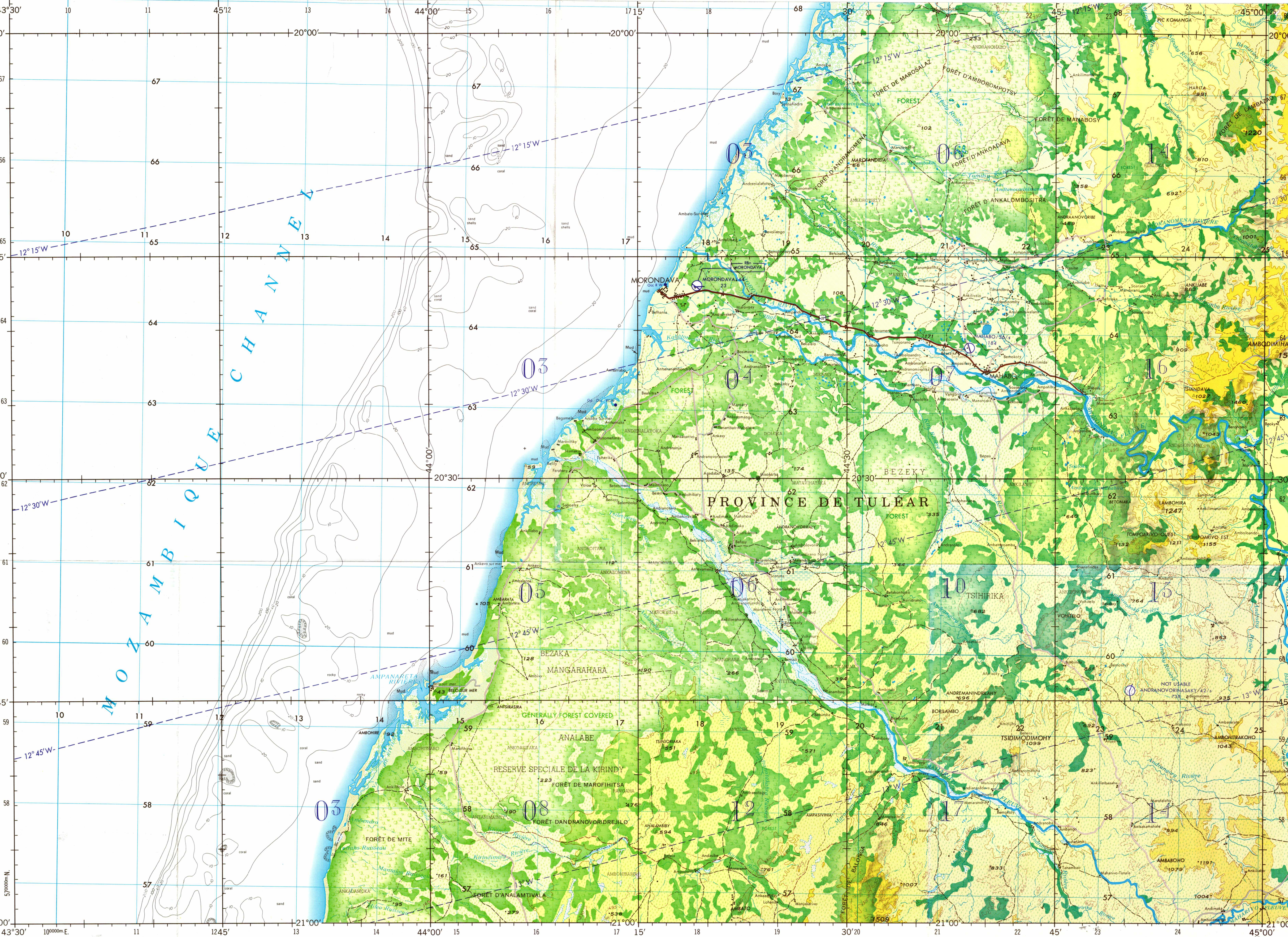
**CAUTION**  
 AIR INFORMATION CURRENT THROUGH 22 AUGUST 1967  
 Consult Notices to Airmen (NOTAMS) and Flight Information Publications (FLIPs) for the latest air information; the Chart Updating Manual (CHUM) for other chart revision information.

HIGHEST TERRAIN elevations for each 15 MINUTE QUADRANGLE are represented in THOUSANDS and HUNDREDS of feet. They are omitted where relief information is inadequate. A minus sign (-) following the figure indicates that the figure is based on an estimated elevation.

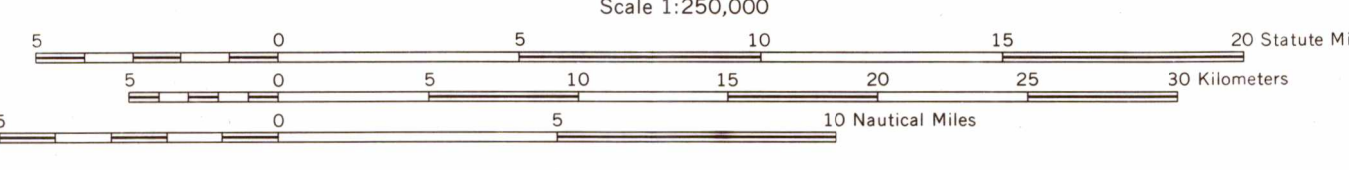
EXAMPLE: 5181-

**NOTES**

- No obstructions 200 feet or more above ground level are known to exist within this area.
- Prepared under the direction of the Defense Intelligence Agency and published by Army Map Service, Corps of Engineers, U.S. Army, Washington, D.C. Compiled in 1966 from best available source materials.
- Names for symbolized populated places are omitted where information is not available or where density of detail does not permit their inclusion.



**ELEVATIONS IN FEET DEPTHS IN METERS JOINT OPERATIONS GRAPHIC (AIR) ELEVATIONS IN FEET DEPTHS IN METERS**



CONTOUR INTERVAL APPROXIMATELY 330 FEET WITH SUPPLEMENTARY CONTOURS AT 165 FOOT INTERVALS

LABORDE PROJECTION  
 (Origin 18°54'S, 46°26'13.95"E, of Greenwich)

BLACK NUMBERED LINES INDICATE THE 10,000 METER MADAGASCAR GRID, HAYFORD 1909, INTERNATIONAL SPHEROID

USERS SHOULD REFER CORRECTIONS, ADDITIONS, AND COMMENTS TO THE NIMA CUSTOMER HELP DESK: 1-800-455-0099; COMMERCIAL: 214-260-5022; OR WRITE TO: DIRECTOR, NATIONAL MAPS AND MAPPING AGENCY, ATTN: COC, MAIL STOP P-37, 4600 SANGAMORE ROAD, BETHESDA, MD 20816-5003.

TO GIVE A STANDARD REFERENCE ON THIS SHEET TO NEAREST 100 METERS

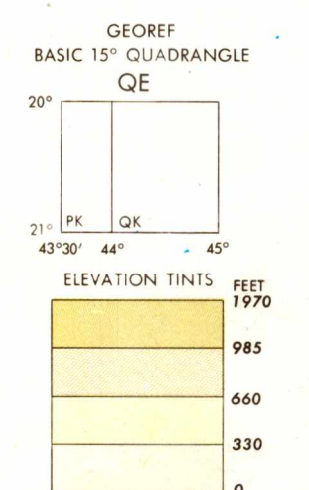
IGNORE the SMALLER figures of any grid number; these are for finding the full coordinates. Use ONLY the LARGER figures of the grid number: example: 579000

SAMPLE POINT: Aniniv	15	8
1. Locate first VERTICAL grid line to LEFT of point and read LARGE figures (adding the low number in the top or bottom margin, or on the line itself). Estimate tenths from grid line to point.	15	8
2. Locate first HORIZONTAL grid line BELOW point and read LARGE figures (adding the low number in the left or right margin, or on the line itself). Estimate tenths from grid line to point.	15	8
SAMPLE REFERENCE:	158000	8

AERONAUTICAL APPROACH CHARTS (Code: AC) and/or AERONAUTICAL CHARTS (Code: AOC) completely within this area are discontinued. Those that are partially within this area should be retained until publication of the adjacent Joint Operations Graphic (Air), 1501 Air. Consult the 002 Bulletin for publication and discontinuance notices.

**GLOSSARY**

Est.	east
Fleuve	river, stream
Forêt	forest
Lac	lake
Nord	north
Ouest	west
Rivière	river, stream
Ruisseau	stream
Sud	south



**RELIABILITY OF THIS MAP**  
 (as determined by standard practices)

Accuracy, as related to control of map:	Area A	Area B
Contours	within 104 ft. (32 m.)	within 104 ft. (32 m.)
Contours	within 104 ft. (32 m.)	within 104 ft. (32 m.)

Date of map information:  
 Road Classification: 1964, 1964  
 Vegetation: (1956-62) (1949-60)  
 All other features: (1951-63) (1949-60)  
 126164

Road classification not verified by reconnaissance.  
 Horizontal Datum: Unknown  
 Vertical Datum: Mean Sea Level

