

SERIES 1501 AIR SHEET SF 33-12 EDITION 1

POPULATED PLACES  
Over 50,000  
15,000 to 50,000  
5,000 to 15,000  
1,000 to 5,000

WINDHOEK  
WALVIS BAY  
Keetmanshoop  
Mariental

ROADS  
All weather, hard surface  
More than two lanes wide  
Two lanes wide  
All weather, loose or light surface  
More than two lanes wide  
Two lanes wide  
All weather, loose or light surface,  
one lane wide  
Fair or dry weather, loose surface  
Cart track  
Footpath, trail

RAILROADS  
Normal gauge (3'6")  
Narrow gauge  
Station, position known; position unknown

BOUNDARIES  
International  
First-order administrative  
Reservation

HORIZONTAL CONTROL POINTS  
Astronomic position  
Horizontal control point  
Spot elevation: Normal; Critical

Sand  
Distorted surface  
Escarpment; Levee  
Mound; Cliff  
Church, mission; School  
Nat. Kral; Landmark feature; Mine

VEGETATION  
Woods; Scattered trees  
Mangrove  
Orchards, plantations, vineyards

HYDROGRAPHY  
Well; Spring; Dry lake  
Wadi; Sebha, wet depression  
Land subject to inundation; Swamp  
Depth curves in feet  
Pier, breakwater  
Exposed wreck  
Dam  
Rocks awash  
Forebay flat  
Limit of danger; Reef

TERRAIN ELEVATIONS  
Highest known elevation is 8133 feet at the following coordinates:  
Geographic 22°39'S 17°11'E  
Grid Y2384

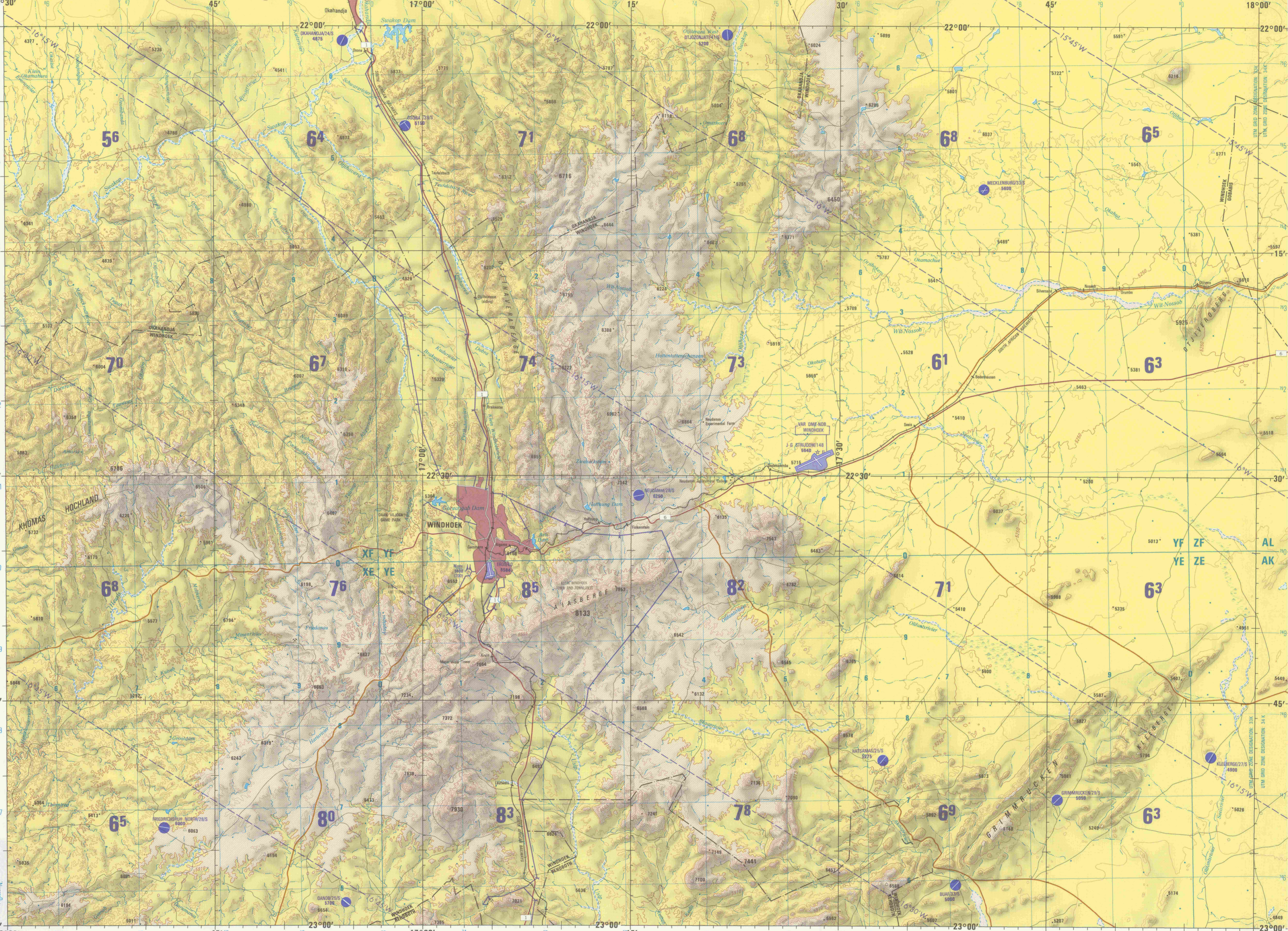
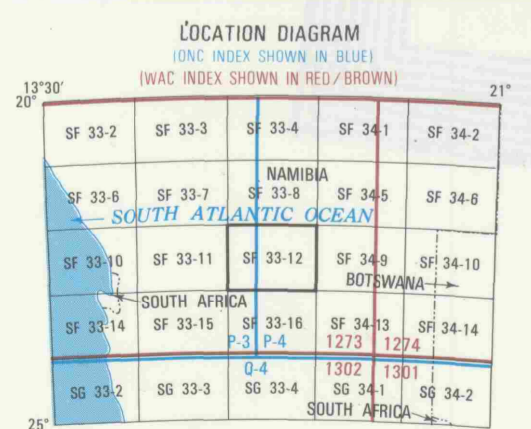
AERODROMES (Military or Civil)  
Field limits with runway pattern  
EDNA/Rom 725  
50-Length of longest runway to nearest hundreds of feet  
Soft or unimproved surface  
Unknown surface  
725-Elevation  
Field limits, with runway pattern unknown  
Field limits unknown, with runway pattern  
Field limits and runway pattern unknown

HELIPORT  
VISUAL AIDS AND OBSTRUCTIONS  
Obstruction  
1100-Elevation of obstruction top, above sea level  
2500-Elevation of obstruction top, above ground level  
Group obstruction  
Radio facility obstruction  
Power transmission line  
Visual ground sign  
Aero light; Marine light

**CAUTION**  
AIR INFORMATION CURRENT THROUGH 28 AUG 1980  
Consult NOTAMS and Flight Information Publications for the latest air information; the DOD Aeronautical Chart Updating Manual or MOD (U.K.) Aeronautical Chart Amendment document, for other chart revision information.

LINE OF EQUAL MAGNETIC VARIATION FOR 1980  
(Annual rate of change 11' decrease)

**ATTENTION**  
THIS CHART CONTAINS MAXIMUM ELEVATION FIGURES (MEF)  
The Maximum Elevation Figures shown in quadrangles bounded by ticked lines of latitude and longitude are represented in THOUSANDS and HUNDREDS of feet above mean sea level. The MEF is based on information available concerning the highest known feature in each quadrangle, including terrain and obstructions (towers, towers, antennas, etc.). In areas of extreme availability risk, the MEF is shown by a note spaced across the area.  
**125**  
EXAMPLE: 12,500 feet



Prepared and published by the Defense Mapping Agency  
Hydrographic/Topographic Center, Washington, D.C.  
Compiled November 1979.

**ELEVATIONS IN FEET**

**JOINT OPERATIONS GRAPHIC (AIR)**

SCALE 1:250,000

CONTOUR INTERVAL 165 FEET

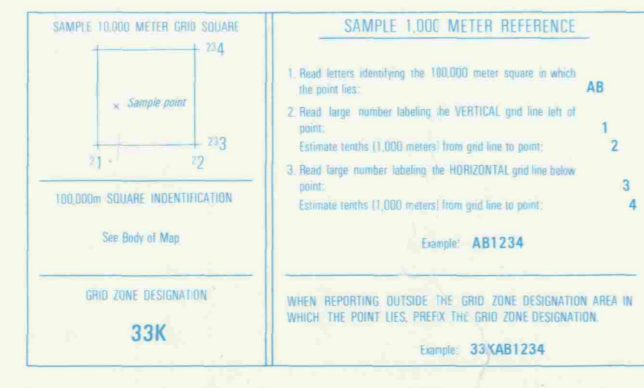
20 Statute Miles  
30 Kilometers  
15 Nautical Miles

GEOREF BASIC 15° QUADRANGLE PE

3-81 Printed by the Defense Mapping Agency Hydrographic/Topographic Center

CONVERSION OF ELEVATIONS

FEET	METERS	FEET	METERS
1000	305	10000	3048
2000	610	20000	6096
3000	915	30000	9144
4000	1220	40000	12192
5000	1525	50000	15240
6000	1830	60000	18288
7000	2135	70000	21336
8000	2440	80000	24384
9000	2745	90000	27432
10000	3050	100000	30480
11000	3355	110000	33528
12000	3660	120000	36576
13000	3965	130000	39624
14000	4270	140000	42672
15000	4575	150000	45720
16000	4880	160000	48768
17000	5185	170000	51816
18000	5490	180000	54864
19000	5795	190000	57912
20000	6100	200000	60960
21000	6405	210000	64008
22000	6710	220000	67056
23000	7015	230000	70104
24000	7320	240000	73152
25000	7625	250000	76200
26000	7930	260000	79248
27000	8235	270000	82296
28000	8540	280000	85344
29000	8845	290000	88392
30000	9150	300000	91440



BLUE NUMBERED LINES INDICATE THE 10,000 METER UNIVERSAL TRANSVERSE MERCATOR GRID, ZONE 32, CLARKE 1880 SPHEROID.

USERS SHOULD REFER TO CORRECTIONS, ADDITIONS, AND COMMENTS FOR IMPROVING THIS PRODUCT TO THE USERS' DIRECTOR, DEFENSE MAPPING AGENCY AEROSPACE CENTER, ST. LOUIS, MISSOURI 63118, ATTN: PP (OR USERS) DIRECTORATE OF MILITARY SURVEY, MINISTRY OF DEFENCE, LONDON.

GLOSSARY  
Bergfel ..... hill, mountain  
Bf ..... hill  
Kop ..... mountain peak  
Guppe ..... mountain peak  
River ..... stream

ELEVATION TINTS  
FEET  
5004  
2925

RELIABILITY OF THIS GRAPHIC  
(as determined by standard practices)

PLOTTING ACCURACY 90% ASSURANCE  
(as determined by standard practices)

Horizontal	410 ft
Contours	82 ft
Date of information	1979

Read information not verified by reconnaissance  
Graphic not field checked

Horizontal Datum: Air 1950  
Vertical Datum: Mean Sea Level  
Transverse Mercator Projection

NOTES  
Only obstructions 200 feet or more above ground level are shown.  
The information on obstructions is not necessarily complete.  
On this graphic a lane is generally considered as being 12 feet (3.5 meters) in width.  
THE REPRESENTATION OF INTERNATIONAL BOUNDARIES ON THIS GRAPHIC IS NOT NECESSARILY AUTHORITY.

SERIES 1501 AIR SHEET SF 33-12 EDITION 1  
SERIES 1501 COMPANION SHEET IS EDITION 1

DISTRIBUTION LIMITED—DESTROY WHEN NO LONGER NEEDED

SCALE 1:250,000  
WINDHOEK, NAMIBIA

SERIES 1501 AIR SHEET SF 33-12 EDITION 1  
SERIES 1501 COMPANION SHEET IS EDITION 1

STOCK NO. 1501AS/3312