

LEGEND

POPULATED PLACES

- First importance: LOURENÇO MARQUES
- Second importance: BEIRA
- Third importance: CHEMBA
- Fourth importance: Mabalane
- Fifth importance: Namialo

ROADS

- All weather, hard surface
- Two or more lanes
- One lane
- All weather, loose surface
- Two or more lanes
- One lane
- Fair or dry weather, loose surface
- Cart track
- Trail (footpath)

ROUTE MARKER

- National, Regional

RAILROADS

- Normal gauge 1.07 m. (3'6")
- Narrow gauge
- Station

BOUNDARIES

- International
- Primary administrative
- Reservation

HORIZONTAL CONTROL POINTS

- Astronomic position
- Trigonometric position

Spot elevation: Normal, Critical

VEGETATION

- Woods-brushwood
- Scattered trees
- Orchard, plantation, vineyard
- Sand
- Escarpment, Levee
- Isolated rock, Mound, Cliff
- Church, School
- Kraal, Landmark feature or object, Mine
- Well, Spring, Salt evaporator
- Land subject to inundation
- Swamp, marsh
- Depth curves in feet
- Wreck, Exposed, Sunken
- Rocks: Awaah, Sunken
- Foreshore flat, Mangrove
- Limit of danger, Reef
- Area name

TERRAIN ELEVATION

HIGHEST KNOWN ELEVATION is 748 feet at 19°01'S, 34°46'E.

AERODROMES (Military or Civil)

- Field limits with runway pattern
- EDNA/50/4
- EDNA/Name
- 50-Length of longest runway to nearest hundreds of feet
- 1-Soft or unimproved surface
- Unknown surface
- 725-Elevation
- Field limits with runway pattern unknown
- Field limits and runway pattern unknown

HELIPORT

RADIO AIDS TO NAVIGATION

- VHF OMNI RANGE (VOR)
- VORTAC
- TACAN

CONTROLLED AIRSPACE

ADIZ

ATLANTIC ADIZ

VISUAL AIDS AND OBSTRUCTIONS

- Obstruction
- 1108-Elevation of obstruction top above sea level
- (259)-Elevation of obstruction top above ground level
- Group obstruction
- Radio facility obstruction
- Power transmission line
- Visual ground sign
- Aero light, Marine light

CAUTION

AIR INFORMATION CURRENT THROUGH 5 DECEMBER 1975

Consult NOTAMS and Flight Information Publications for the latest air information; the DOD Aeronautical Chart Updating Manual or MOD (U.K.) Aeronautical Chart Amendment document, for other chart revision information.

ATTENTION

THIS CHART CONTAINS MAXIMUM ELEVATION FIGURES (MEF)

The Maximum Elevation Figures show in quadrangles bounded by ticked lines of latitude and longitude are represented in THOUSANDS and HUNDREDS of feet above mean sea level. The MEF is based on information available concerning the highest known feature in each quadrangle, including terrain and obstructions (trees, towers, antennas, etc.)

Example: 12,500 feet. **12⁵**

NOTES

Only obstructions 200 feet or more above ground level are shown. The information on obstructions is not necessarily complete. Road classification not verified by reconnaissance. A lone is generally considered as being a minimum of 2.5 meters (8 feet) in width. Names for symbolized populated places are omitted where information is not available or where density of detail does not permit their inclusion.

LEGEND

POPULATED PLACES

- First importance: LOURENÇO MARQUES
- Second importance: BEIRA
- Third importance: CHEMBA
- Fourth importance: Mabalane
- Fifth importance: Namialo

ROADS

- All weather, hard surface
- Two or more lanes
- One lane
- All weather, loose surface
- Two or more lanes
- One lane
- Fair or dry weather, loose surface
- Cart track
- Trail (footpath)

ROUTE MARKER

- National, Regional

RAILROADS

- Normal gauge 1.07 m. (3'6")
- Narrow gauge
- Station

BOUNDARIES

- International
- Primary administrative
- Reservation

HORIZONTAL CONTROL POINTS

- Astronomic position
- Trigonometric position

Spot elevation: Normal, Critical

VEGETATION

- Woods-brushwood
- Scattered trees
- Orchard, plantation, vineyard
- Sand
- Escarpment, Levee
- Isolated rock, Mound, Cliff
- Church, School
- Kraal, Landmark feature or object, Mine
- Well, Spring, Salt evaporator
- Land subject to inundation
- Swamp, marsh
- Depth curves in feet
- Wreck, Exposed, Sunken
- Rocks: Awaah, Sunken
- Foreshore flat, Mangrove
- Limit of danger, Reef
- Area name

TERRAIN ELEVATION

HIGHEST KNOWN ELEVATION is 748 feet at 19°01'S, 34°46'E.

AERODROMES (Military or Civil)

- Field limits with runway pattern
- EDNA/50/4
- EDNA/Name
- 50-Length of longest runway to nearest hundreds of feet
- 1-Soft or unimproved surface
- Unknown surface
- 725-Elevation
- Field limits with runway pattern unknown
- Field limits and runway pattern unknown

HELIPORT

RADIO AIDS TO NAVIGATION

- VHF OMNI RANGE (VOR)
- VORTAC
- TACAN

CONTROLLED AIRSPACE

ADIZ

ATLANTIC ADIZ

VISUAL AIDS AND OBSTRUCTIONS

- Obstruction
- 1108-Elevation of obstruction top above sea level
- (259)-Elevation of obstruction top above ground level
- Group obstruction
- Radio facility obstruction
- Power transmission line
- Visual ground sign
- Aero light, Marine light

NOTES

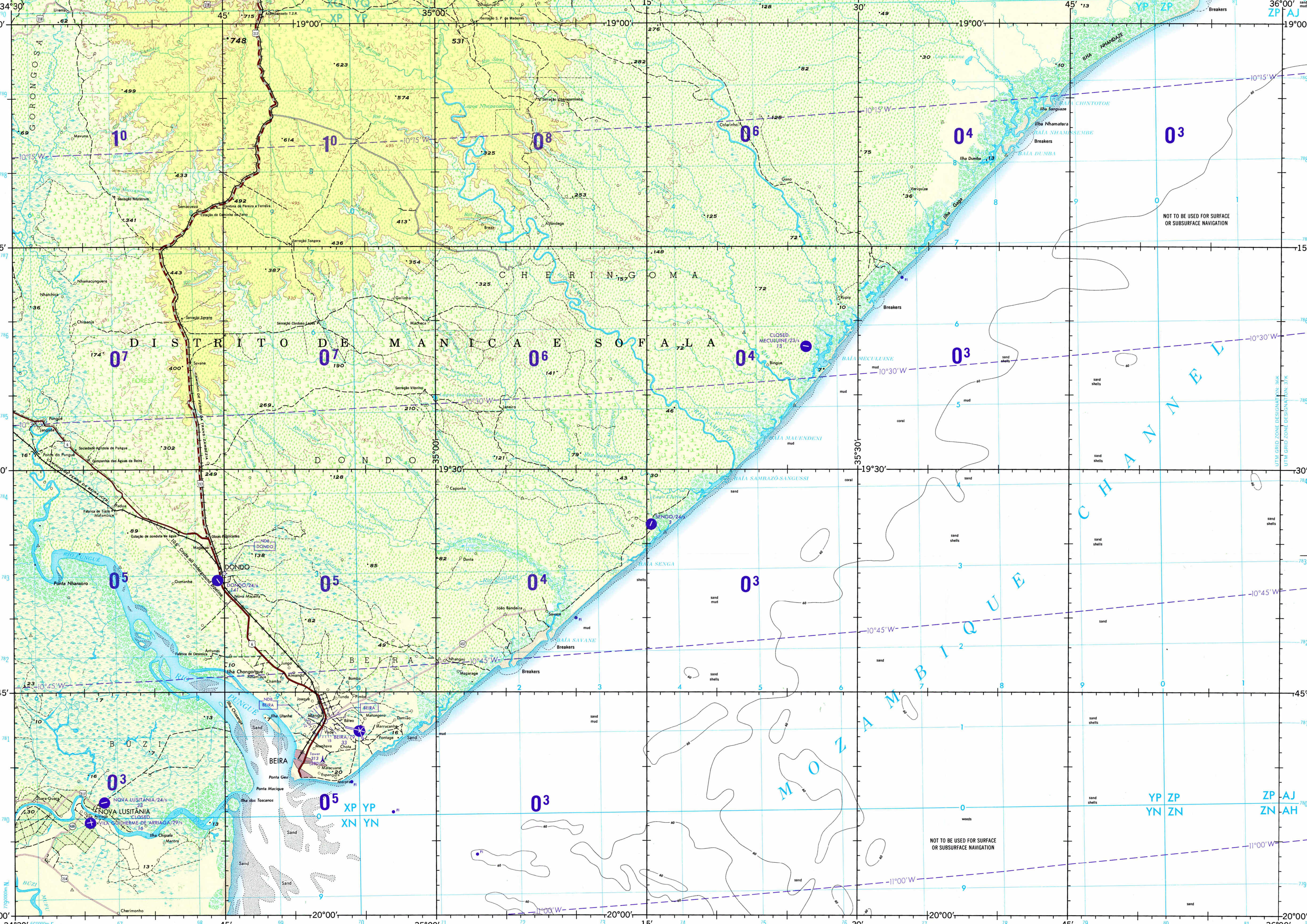
Only obstructions 200 feet or more above ground level are shown. The information on obstructions is not necessarily complete. Road classification not verified by reconnaissance. A lone is generally considered as being a minimum of 2.5 meters (8 feet) in width. Names for symbolized populated places are omitted where information is not available or where density of detail does not permit their inclusion.

SCALE 1:250,000

BEIRA, MOZAMBIQUE

SERIES 1501 AIR SHEET SE 36-16 EDITION 3

SERIES 1501 COMPANION SHEET IS EDITION 2



ELEVATIONS IN FEET DEPTHS IN FEET

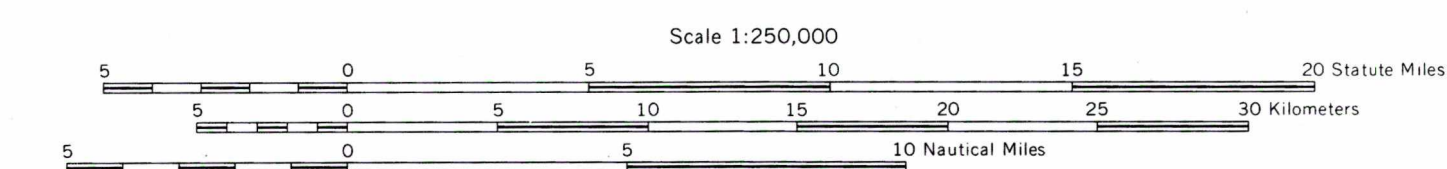
JOINT OPERATIONS GRAPHIC (AIR)

ELEVATIONS IN FEET DEPTHS IN FEET



Prepared and published by the Defense Mapping Agency Topographic Center Washington D.C. 20315. Compiled in 1968. Revised by DMAC November 1975.

GRID ZONE DESIGNATION	TO GIVE A STANDARD REFERENCE ON THIS SHEET TO NEAREST 100 METERS
XP YP ZP	SAMPLE POINT: Omba
XN YN ZN	1. Read letters identifying 100,000 meter square in which the point lies.
	2. Locate first vertical grid line to left of point and read LARGE figure labeling the line either in the top or bottom margin, or on the line itself.
	3. Locate first horizontal grid line to point. Estimate tenth between grid line to point.
	4. Locate first horizontal grid line below the line letter in the left or right margin, or on the line itself.
	5. Estimate tenth between grid line to point.
	SAMPLE REFERENCE: YP1332
	10 reporting beyond 9° S or 18° W, prefix 000 from beginning, etc.
	36491332

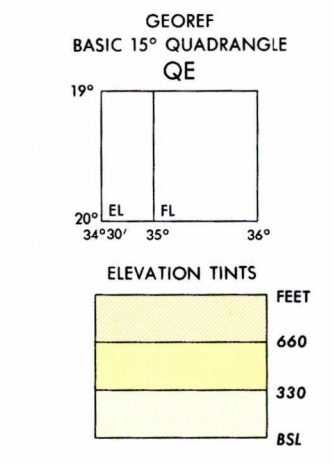


CONTOUR INTERVAL APPROXIMATELY 330 FEET WITH SUPPLEMENTARY CONTOURS AT 165 FOOT INTERVALS

BLUE NUMBERED LINES INDICATE THE 10,000 METER UNIVERSAL TRANSVERSE MERCATOR GRID, ZONE 36, CLARK 1880 SPHEROID

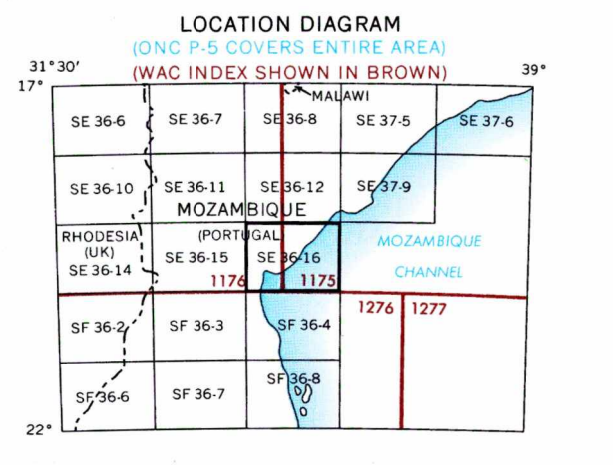
GLOSSARY

- Acampamento.....camp
- Baía.....bay
- Caminho de ferro.....railroad
- Cantina.....canteen, store
- Cerâmica.....brickyard, pottery works
- Companhia das águas.....water company
- Distrito.....primary administrative division
- Estação.....station
- Estação de condução de água.....water conduit station
- Fábrica.....factory
- Ilha.....island
- Lago, lagoa.....lake
- Obras publicadas.....public works department
- Ponta.....point, headland
- Rio.....stream
- Serração.....sawmill
- Sociedade agrícola.....farm company
- Vila.....town



RELIABILITY OF THIS GRAPHIC
(as determined by standard practices)

- Accuracy as related to control of graphic:
 - Horizontal positions.....within 400 ft.
 - Contours.....within 100 ft.
- Date of graphic information: 1967
- Method of acquisition: 1961, 61
- Vegetation: 1961, 61
- All other features: 1960
- Horizontal Datum: 1960 A.C.
- Vertical Datum: Mean Sea Level
- Transverse Mercator Projection



USERS SHOULD REFER CORRECTIONS, ADDITIONS, AND COMMENTS TO THE NIMA CUSTOMER HELP DESK: 1-800-456-0889; COMMERCIAL 314-380-5022; DSN 488-5022; OR WRITE TO: DIRECTOR, NATIONAL IMAGERY AND MAPPING AGENCY, ATTN: CDD, MAIL STOP P-37, 4000 SANGAMORE ROAD, BETHESDA, MD 20815-5005