

SERIES 1501 AIR SHEET SE 20-10 EDITION 1

POPULATED PLACES - LUGARES POBLADOS
Over 100,000
50,000 to 100,000
10,000 to 50,000
2,000 to 10,000
Less than 2,000

ROADS - CARRETERAS
All weather hard surface
Two lanes wide
One lane wide
All weather, loose or light surface
Surface light or sandy

RAILROADS - FERROCARRILES
Normal gauge
Narrow gauge

BOUNDARIES - LIMITES
International
First-order administrative division

OTHER FEATURES - OTRAS CARACTERISTICAS
Horizontal control point
School
Mine

VEGETATION - VEGETACION
Woods
Scattered trees
Tropical grass

HYDROGRAPHY - HIDROGRAFIA
Well
Spring
Land subject to inundation
Swamp or marsh

TERRAIN ELEVATIONS - ALTITUDES DEL TERRENO
Spot elevation
Highest known elevation is 11018 feet

AERODROMES (Military or Civil)
Runway pattern known
EDNA-Name
EDNA-Number

HELIPORT/HELIPAD
HELIPORT/HELIPAD AT HOSPITAL
HELIPORT/HELIPAD AT HOSPITAL

RADIO FACILITIES - FACILIDADES DE RADIO
Radio range LF/MF
ALCANCE DE RADIO LF/MF
MULTIPLE RADIO FACILITIES

VISUAL AIDS AND OBSTRUCTIONS
Obstruction
1108-Elevation of obstruction top, above sea level

CAUTION
AIR INFORMATION CURRENT THROUGH AUGUST 1995
Consult NOTAMS and Flight Information Publications

ADVERTENCIA
INFORMACION AERONAUTICA CORRIENTE AGOSTO 1995
Consultar NOTAMS y Publicaciones de Informacion de Vuelo

CAUTION
AIR INFORMATION CURRENT THROUGH AUGUST 1995
Consult NOTAMS and Flight Information Publications

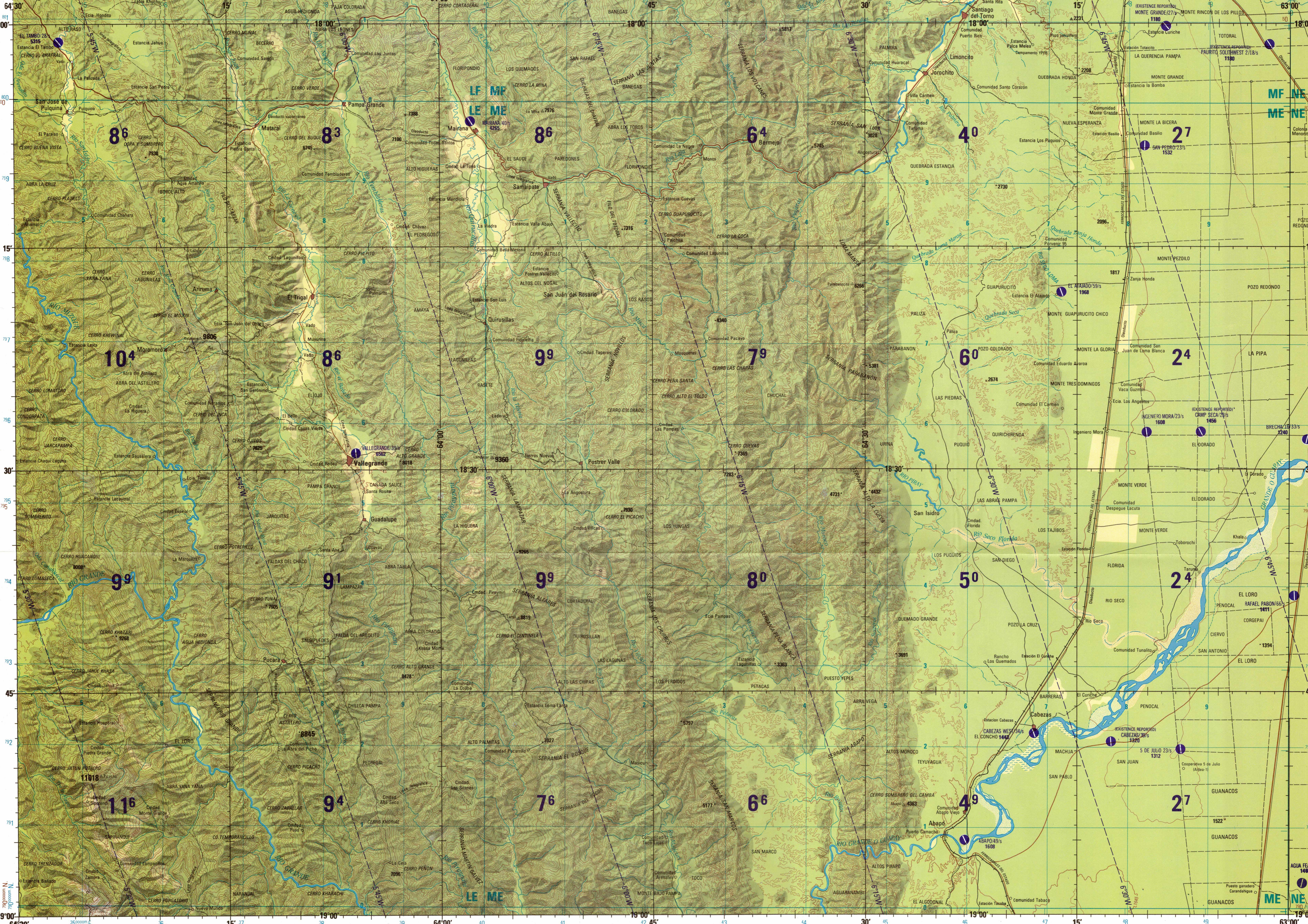
ADVERTENCIA
INFORMACION AERONAUTICA CORRIENTE AGOSTO 1995
Consultar NOTAMS y Publicaciones de Informacion de Vuelo

CAUTION
AIR INFORMATION CURRENT THROUGH AUGUST 1995
Consult NOTAMS and Flight Information Publications

ADVERTENCIA
INFORMACION AERONAUTICA CORRIENTE AGOSTO 1995
Consultar NOTAMS y Publicaciones de Informacion de Vuelo

CAUTION
AIR INFORMATION CURRENT THROUGH AUGUST 1995
Consult NOTAMS and Flight Information Publications

ADVERTENCIA
INFORMACION AERONAUTICA CORRIENTE AGOSTO 1995
Consultar NOTAMS y Publicaciones de Informacion de Vuelo



LOCATION DIAGRAM (IAC INDEX SHOWN IN BLUE) (IWC INDEX SHOWN IN RED/BROWN)
SCALE: 1:250,000
VALLEGRANDE, BOLIVIA
SERIES 1501 AIR SHEET SE 20-10 EDITION 1

Prepared and published by the Defense Mapping Agency, Fairfax, VA, in cooperation with the Instituto Geografico Militar of Bolivia. Compiled in March, 1995.
LIMITED DISTRIBUTION: Distribution authorized to Department of Defense (DDI) and U.S. Air Force (USAF) only. Release authorized to U.S. DoD contractors only.
CONVERSION OF ELEVATIONS
FEET METERS
1000 305
900 274
800 244
700 213
600 183
500 152
400 122
300 91
200 61
150 46
100 31

ELEVATIONS IN FEET ELEVACIONES EN PIES
CONVERSION DE COORDENADAS WGS 84 TO PSAD 56
CONVERSION DE COORDENADAS WGS 84 A PSAD 56
CONVERSION DE COORDENADAS WGS 84 A PSAD 56
CONVERSION DE COORDENADAS WGS 84 A PSAD 56

JOINT OPERATIONS GRAPHIC (AIR)
SCALE 1:250,000
SCALE 1:250,000
SCALE 1:250,000
SCALE 1:250,000
CONTOUR INTERVAL APPROXIMATELY 330 FEET
CURVAS DE NIVEL 330 PIES APROXIMADOS
CONTOUR INTERVAL APPROXIMATELY 330 FEET
CURVAS DE NIVEL 330 PIES APROXIMADOS

ELEVATIONS IN FEET ELEVACIONES EN PIES
GLOSSARY GLOSARIO
Campanero YPFB
Campesino
Estancia
Estacion
Ferretil
Loma
Mesa
Pampa
Puesto ganadero
Quadrado
Rio
Serrania
Vado
Villa

GEOREF BASIC 15° QUADRANGLE
HE
18°00'
19°00'
64°30'
64°00'
63°00'
RELIABILITY OF THIS GRAPHIC
GRAPHIC FEATURE DATE OF INFORMATION
All features 1995
ELEVATION TINTS
FEET
8860
2965
60
NOTES - NOTAS
Powerlines are shown except within populated place tints. Other obstructions are shown if they are 200 feet or more above ground level.
©COPYRIGHT 1995 BY THE UNITED STATES GOVERNMENT
DIA STOCK NO. 1501ASE2010 ED NO. 001