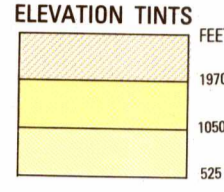


SERIES 1501 AIR SHEET SD 21-5 EDITION 1

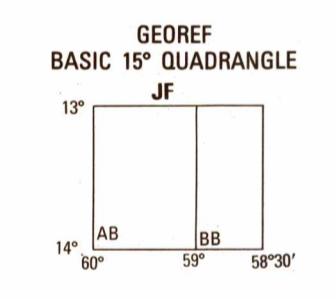
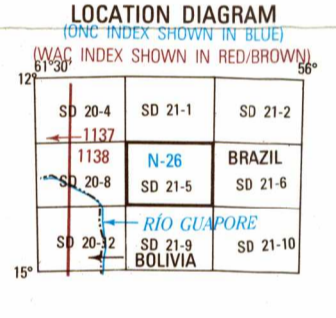


RELIABILITY OF THIS GRAPHIC
Compiled from best available source materials.

GLOSSARY
Abandonado abandoned
Alga water
Aldeia village, populated place
Cachoeira waterfall, rapids
Camp de pouso airfield, camp, rest area
Cerca fence
Chapada upland, plateau
Cór. D'água stream
Dados insuficientes insufficient data
Estado first-order administrative division
Faz. Fazenda plantation, farm
Faz. Nacional National Indian Foundation
Gleba field
Hidroelétrica hydro electric
Indígena native
Ponte bridge
Posto post
Ribeirão, Rio stream
Sítio small farm, country place
Telég. telegraph
Usina factory, plant
Vila village

CONVERSION OF ELEVATIONS

FEET	METERS	FEET	METERS
1000	305	1000	3048
800	244	800	2438
600	183	600	1829
400	122	400	1219
200	61	200	610
100	31	100	305



CAUTION
AIR INFORMATION CURRENT THROUGH 1 SEPTEMBER 1993
Consult NOTAMS and Flight Information Publications for the latest air information; the DOD Aeronautical Chart (Issued Manual or MCD) U.S. Aeronautical Chart Amendment document, for other chart revision information.

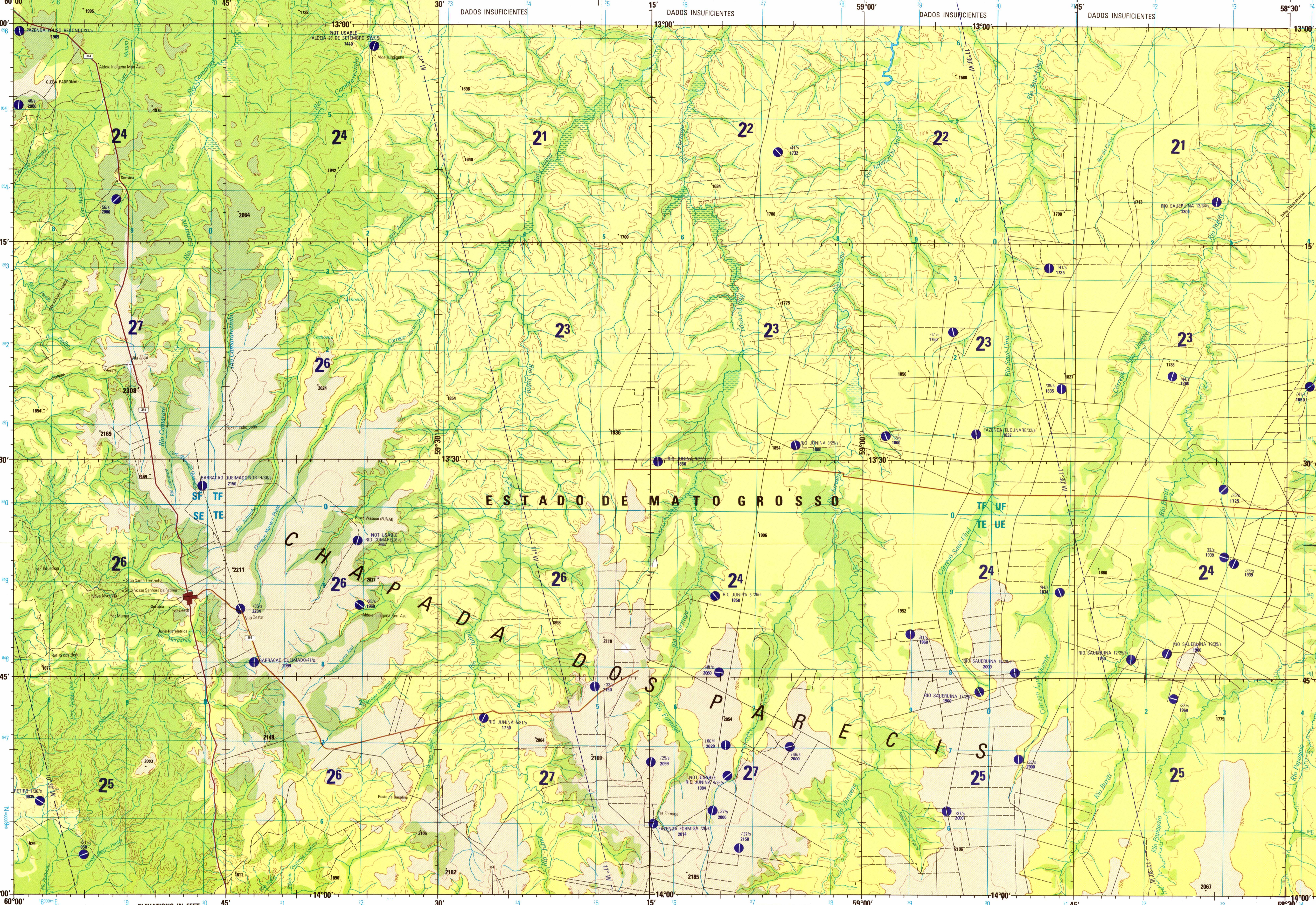
LINES OF EQUAL MAGNETIC VARIATION FOR 1990
(Annual rate of change 10' increase)
LINES DE IGUAL VARIAÇÃO MAGNÉTICA PARA 1990
(Índice anual de variação: 10' aumento)

CAUTION
Vertical obstructions, including powerlines, have been extracted from the most reliable sources available. However, there are assurances that all are shown, or that their locations or heights are exact.

LIMITED DISTRIBUTION
Distribution authorized to the Department of Defense, U.S. DOD contractors and to U.S. Government Agencies supporting DOD functions by authority of the Director, Defense Mapping Agency, 30 May 1989. Other requests shall be referred to Headquarters, DMA, ATTN: SOP, Desrom as "For Official Use Only."

SCALE 1:250,000
VILA JATAÍ, BRAZIL

SERIES 1501 AIR SHEET SD 21-5 EDITION 1

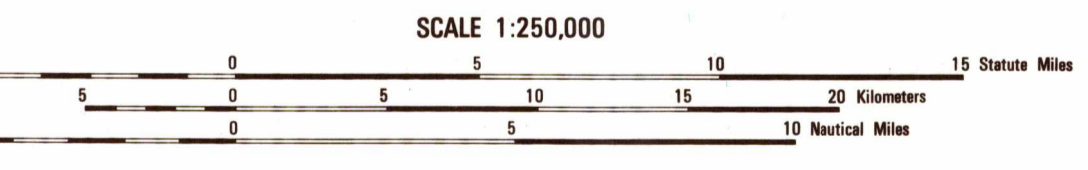


Prepared and published by the Defense Mapping Agency, Hydrographic/Topographic Center, Bethesda, MD. Compiled June 1993.

EXAMPLE 1,000 METER QUAD SQUARE	DESIGNAÇÃO DE 1.000 METROS
<p>1. Real large number labeling the VERTICAL grid line with 1000.</p> <p>2. Real large number labeling the HORIZONTAL grid line with 1000.</p> <p>3. Real large number labeling the HORIZONTAL grid line with 1000.</p>	<p>1. Um ou outro comprimento em quadrados de 1000 metros, no qual um número.</p> <p>2. Um ou outro comprimento em quadrados de 1000 metros, no qual um número.</p> <p>3. Um ou outro comprimento em quadrados de 1000 metros, no qual um número.</p>
<p>1000 M SQUARE IDENTIFICATION</p> <p>IDENTIFICAÇÃO DO QUADRADO DE 1000 METROS</p> <p>See Key of Map</p> <p>Ver chave de mapa</p>	<p>1. Um ou outro comprimento em quadrados de 1000 metros, no qual um número.</p> <p>2. Um ou outro comprimento em quadrados de 1000 metros, no qual um número.</p> <p>3. Um ou outro comprimento em quadrados de 1000 metros, no qual um número.</p>
<p>GRID ZONE DESIGNATION</p> <p>DESIGNAÇÃO DA ZONA</p> <p>21L</p>	<p>1. Um ou outro comprimento em quadrados de 1000 metros, no qual um número.</p> <p>2. Um ou outro comprimento em quadrados de 1000 metros, no qual um número.</p> <p>3. Um ou outro comprimento em quadrados de 1000 metros, no qual um número.</p>

ROADS - RODOVIAS	OTHER FEATURES - OUTROS FEITOS	VEGETATION - VEGETAÇÃO
<p>All weather hard surface More than two lanes wide Two lanes wide One lane wide</p> <p>All weather, loose or light surface Transitível todo ano, revestimento sólido Dois pistas de largura Uma pista de largura</p> <p>Two lanes wide One lane wide</p> <p>Fair or dry weather, loose surface Transitível em tempo bom e seco, revestimento solto</p> <p>Cart track Footpath, trail Route marker</p>	<p>Land subject to inundation Swamp</p> <p>Other features - outros fechos Landmark feature; Mine Vegetation - Woods Orchard; Plantations</p>	<p>Foresta Pomar, Plantação</p>

JOINT OPERATIONS GRAPHIC (AIR)



CONTOUR INTERVAL APPROXIMATELY 135 FEET
EQUIDISTANCIA DAS CURVAS DE NÍVEL 135 PÉS APROXIMADAS

COORDINATE CONVERSION WGS 84 TO CORREGO ALEGRE
CONVERSAO DAS COORDENADAS WGS 84 EM CORREGO ALEGRE
Geographic: Subtract 2.9" Long. Add 7m N.
Geográfica: Subtraia-se 2.9" de Longitude. Subtraia-se 7" de Latitude

USERS SHOULD REFER CORRECTIONS, ADDITIONS, AND COMMENTS FOR IMPROVING THIS PRODUCT TO:
Director, Defense Mapping Agency, ATTN: PR, 8813 Lee Highway, Fairfax, VA 22031-2137

AERODROMES (Military or Civil)	VISUAL AIDS AND OBSTRUCTIONS
<p>AERODROMO (Militar ou Civil)</p> <p>Runway pattern known Runway pattern unknown</p> <p>EDNA/50's 728</p>	<p>Obstruction 1100 - Elevation of obstruction top, above sea level 1250 - Elevation of obstruction, above ground level Group obstruction</p> <p>Radio facility obstruction Power transmission line</p>

TERRAIN ELEVATIONS - COTAS TERRESTRES	BOUNDARIES - LIMITES
<p>Spot elevation; Normal, Critical Cota; Normal, Crítica</p> <p>HIGHEST KNOWN ELEVATION 2308 feet at the following coordinates: Elevação MAIS ALTA CONHECIDA 2308 pés as coordenadas seguintes: Geographic: 13°25' S 59°51' W Grid: Quadratic: SF 9115</p>	<p>International First-order administrative division Reservation</p>

NOTES - NOTAS
Powerlines are shown except within populated place limits.
Other obstructions are shown if they are 200 feet or more above ground level. See caution note.
Se exibem as linhas de alta tensão com a exceção de dentro de as áreas em locais que mostram as lugares povoados. Outras obstruções se exibem se estas 200 ou mais pés acima do nível do terra. Ver advertência.
On this graphic a lane is generally considered as being 8 feet (2.5 meters) in width.
Em este gráfico se considera que uma via possui 8 pés (2.5 metros) de largura.
BOUNDARY REPRESENTATION IS NOT NECESSARILY AUTHENTIC.
A REPRESENTAÇÃO DE LIMITES NÃO É NECESSARIAMENTE ORIGINAL.
LA REPRESENTACION DE LIMITES NO DEBE CONSIDERARSE ORIGINAL

THIS CHART CONTAINS MAXIMUM ELEVATION FIGURES (MEF)
The Maximum Elevation Figures shown in quadrangles bounded by ticked lines of latitude and longitude are represented in THOUSANDS of feet above mean sea level. The MEF is based on information available concerning the highest known feature in each quadrangle, including terrain and obstructions (trees, towers, antennas, etc.).
EXEMPLE: 12,500 feet
125

