

SERIES 1501 AIR SHEET SD 20-12 EDITION 1

AERODROMES (Military or Civil)  
AERÓDROMOS (Militares o Civiles)  
AERODROMO (Militar ou Civil)

Runway pattern known  
Runway pattern unknown

LDNA-Name  
50-Length of longest runway in exact hundreds of feet

729-Elevation  
HELIPORT/HELIPAD  
HELIPORT/HELIPAD AT HOSPITAL

RADIO AIDS TO NAVIGATION  
RÁDIO ASISTENCIA A LA NAVEGACIÓN  
AJUDAS À NAVEGAÇÃO

VHF OMNI RANGE (VOR)  
VORAL VORAL VORAL  
TAGAN TAGAN TAGAN

RADIO FACILITIES  
FACILIDADES DE RÁDIO

RADIO RANGE LMF  
MÚLTIPLE RADIO FACILITIES

CONTROLLED AIRSPACE  
ESPAÇO AEREO CONTROLADO

VISUAL AIDS AND OBSTRUCTIONS  
AUXÍLIOS VISUALES Y OBSTACULOS

Obstruction  
Elevation of obstruction top, above sea level  
Elevation of obstruction top, above ground level

### CAUTION

Vertical obstructions, including powerlines, have been extracted from the most reliable sources available. However, there is no assurance that all are shown, or that their locations or heights are exact.

### PRECAUCIÓN

Las obstrucciones verticales, incluso las líneas de alta tensión, han sido tomadas de las fuentes más fiables disponibles. Sin embargo, no hay certeza que todas sean mostradas o que sus posiciones o elevaciones sean exactas.

### CAUTELA

Obstruções verticais, incluindo as linhas de alta tensão tem sido extraídas de os fontes de informação mais confiáveis disponíveis. Não obstante, não há certeza que suas posições ou elevações sejam exatas.

### CAUTION

AIR INFORMATION CURRENT THROUGH  
Consult NOTAMS and Flight Information Publications for the latest air information; the DOD Aeronautical Chart Updating Manual or MOD (U.K.) Aeronautical Chart Amendment document, for other chart revision information.

### ATTENTION

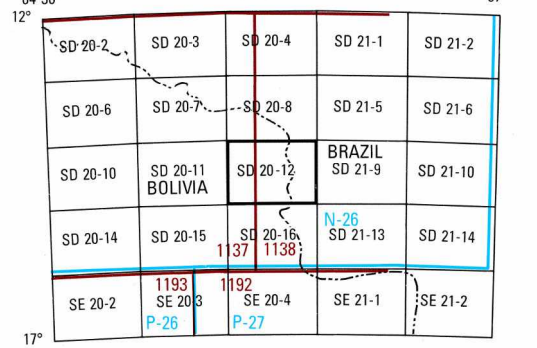
LINES OF EQUAL MAGNETIC VARIATION FOR 1990  
LÍNEAS DE IGUAL VARIACIÓN MAGNÉTICA PARA 1990  
LÍNEAS DE IGUAL VARIACIÓN MAGNÉTICA PARA 1990

### ATTENTION

THIS CHART CONTAINS  
MAXIMUM ELEVATION FIGURES (MEF)  
The Maximum Elevation Figures shown in quadrangles bounded by ticked lines of latitude and longitude are represented in HUNDREDS of feet above mean sea level. The MEF is based on information available concerning the highest known feature in each quadrangle, including terrain and obstructions (trees, towers, antennas, etc.).

EXAMPLE: 12,500 feet **125**

LOCATION DIAGRAM  
ÍNDICE LOCALIZADO EN AZUL



SCALE: 1:250,000  
FLORIDA, BOLÍVIA; BRAZIL

SERIES 1501 AIR SHEET SD 20-12 EDITION 1

POPULATED PLACES-LUGARES POBLADOS  
LOCALIDADES

ROADS-CARRERAS-RODOVIAS  
Dual Highway  
All weather hard surface  
More than two lanes wide  
Two lanes wide  
One lane wide  
All weather, loose or light surface  
More than two lanes wide  
Two lanes wide  
One lane wide

RAILROADS-FERROCARRILES  
ESTRADAS DE FERRO  
Normal gauge  
Station platform  
Precision of the station  
Narrow gauge

BOUNDARIES-LÍMITES-LIMITES  
International  
First-order administrative division  
Second-order administrative division  
Zone reserved  
Other features

OTHER FEATURES-OTRAS CARACTERÍSTICAS-OUTROS RECCOS  
School  
Cemetery  
Ruins  
Hut

VEGETATION-VEGETACIÓN-VEGETAÇÃO  
Woods

HYDROGRAPHY-HIDROGRAFÍA-HIDROGRAFIA  
Land subject to inundation  
Swamp, marsh

TERRAIN ELEVATIONS-ALTITUDES DEL TERRENO  
COTAS TERRESTRES

Spot elevation  
Elevation of obstruction top, above sea level  
Elevation of obstruction top, above ground level

Other features

Other features

Other features

Other features

Other features

Other features

Other features

Other features

Other features

Other features

Other features

Other features

Other features

Other features

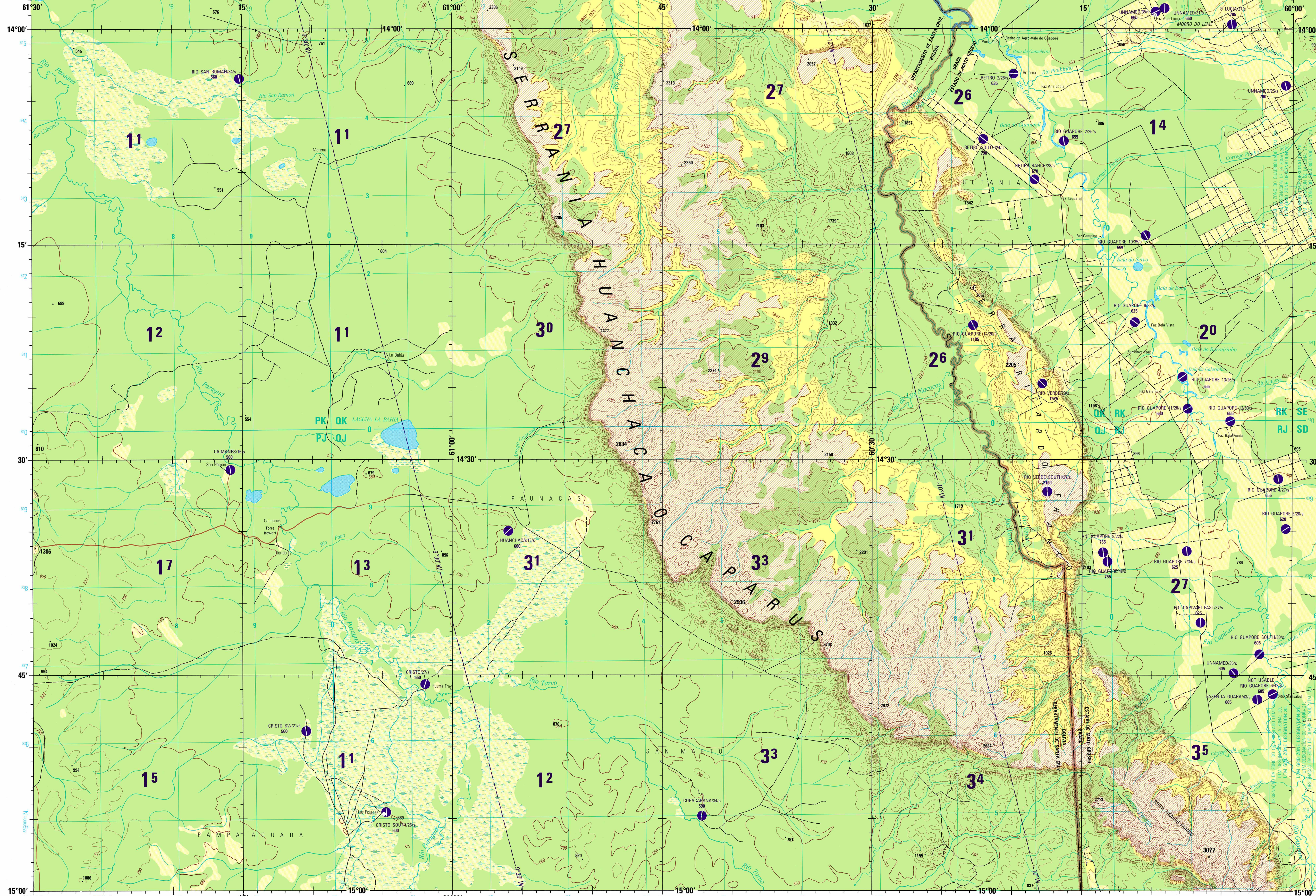
Other features

Other features

Other features

Other features

Other features



Prepared and published by the Defense Mapping Agency Hydrographic/Topographic Center, Bethesda, MD. Compiled in October 1993.

ELEVATIONS IN FEET  
ELEVACIONES EN PÉS

## JOINT OPERATIONS GRAPHIC (AIR)

SCALE 1:250,000

ELEVATIONS IN FEET  
ELEVACIONES EN PÉS

GEOREF  
BASIC 15° QUADRANGLE  
HF

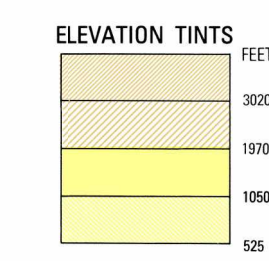
RELIABILITY OF THIS GRAPHIC  
Compiled from best available source materials.  
Horizontal Datum: World Geodetic System  
Vertical Datum: Mean Sea Level  
Transverse Mercator Projection

Printed by the Defense Mapping Agency Hydrographic/Topographic Center. Reprinted by NSA 09-95

NOTES - NOTAS - NOTAS  
Powerlines are shown except within populated place tints. Other obstructions are shown if they are 200 feet or more above ground level. See caution notes.  
Se muestran las líneas de alta tensión con la excepción de dentro de las áreas en tinta clara que representan lugares poblados. Se muestran otras obstrucciones si están 200 o más pies sobre el nivel terreno. Ver advertencia.  
Seixebon as linhas de alta tensão com exceção de dentro de os áreas em mar- ta cor que mostram os lugares povoados. Outras obstruções se mostram se estas 200 ou mais metros acima do nível do terra. Ver advertência.

On this graphic a lane is generally considered as being 8 feet (2.5 meters) in width.  
En este gráfico se considera que una vía tiene 8 pies (2.5 metros) de ancho.  
Em este gráfico se considera que uma via possui 8 pés (2.5 metros) de largura.

BOUNDARY REPRESENTATION IS NOT NECESSARILY AUTHORITY  
A REPRESENTAÇÃO DE LIMITES NÃO É NECESSARIAMENTE OFICIAL



### GLOSSARIO

English	Spanish	Portuguese
Administrative division	administrativa división	administrativa divisão
Station	estación	estação
Lake	lake, populated place	lago, povoado
Morro	lake, pond, lagoon	lago, lagoa, morro
Puerto	port	porto
Rio	stream	rio
Serrania	hill, mountain, mountain range	monte
Serra	mountain	serra
Silva	farm	sítio

### CONVERSION OF ELEVATIONS

FEET	METERS	FEET	METERS
1000	305	10000	3048
900	274	9000	2743
800	244	8000	2438
700	213	7000	2134
600	183	6000	1829
500	152	5000	1524
400	122	4000	1219
300	91	3000	914
200	61	2000	610
100	31	1000	305

### EXAMPLE 1,000 METER REFERENCE

English	Spanish	Portuguese
1. Road signs showing the 1000M reference and the 1000M reference in feet.	1. Señales que muestran el referencial de 1000 metros y el referencial en pies.	1. Sinais que mostram o referencial de 1000 metros e o referencial em pés.
2. Road signs showing the vertical curve and the 1000M reference.	2. Señales que muestran la curva vertical y el referencial de 1000 metros.	2. Sinais que mostram a curva vertical e o referencial de 1000 metros.
3. Road signs showing the horizontal curve and the 1000M reference.	3. Señales que muestran la curva horizontal y el referencial de 1000 metros.	3. Sinais que mostram a curva horizontal e o referencial de 1000 metros.

### EXAMPLE 20L REFERENCE

English	Spanish	Portuguese
1. Blue numbered lines indicate the 1000 meter universal transverse mercator grid, zone 20, world geodetic system 1984 ellipsoid.	1. Líneas numeradas azules indican los 1000 metros de la cuadrícula transversa universal de mercator, zona 20, elipsoido 84, sistema geodésico mundial de 1984.	1. Linhas numeradas azuis indicam o quadrado de 1000 metros transversa universal de mercator, zona 20, elipsóide 84, sistema geodésico mundial de 1984.
2. Blue numbered lines indicate the 1000 meter universal transverse mercator grid, zone 20, world geodetic system 1984 ellipsoid.	2. Líneas numeradas azules indican los 1000 metros de la cuadrícula transversa universal de mercator, zona 20, elipsoido 84, sistema geodésico mundial de 1984.	2. Linhas numeradas azuis indicam o quadrado de 1000 metros transversa universal de mercator, zona 20, elipsóide 84, sistema geodésico mundial de 1984.
3. Blue numbered lines indicate the 1000 meter universal transverse mercator grid, zone 20, world geodetic system 1984 ellipsoid.	3. Líneas numeradas azules indican los 1000 metros de la cuadrícula transversa universal de mercator, zona 20, elipsoido 84, sistema geodésico mundial de 1984.	3. Linhas numeradas azuis indicam o quadrado de 1000 metros transversa universal de mercator, zona 20, elipsóide 84, sistema geodésico mundial de 1984.

CONTOUR INTERVAL APPROXIMATELY 135 FEET  
EQUIDISTANCIA APROXIMADA DE LAS CURVAS DE NIVEL 135 PIES  
EQUIDISTÂNCIA DAS CURVAS DE NIVEL APROXIMADAMENTE 135 PÉS

BLUE NUMBERED LINES INDICATE THE 1000 METER UNIVERSAL TRANSVERSE MERCATOR GRID, ZONE 20, WORLD GEODETIC SYSTEM 1984 ELLIPSOID.  
LAS LÍNEAS NUMERADAS AZULES INDICAN LOS 1000 METROS DE LA CUADRÍCULA TRANSVERSA UNIVERSAL DE MERCATOR, ZONA 20, ELIPSOIDE 84, SISTEMA GEODÉSICO MUNDIAL DE 1984.  
LINHAS NUMERADAS AZUIS INDICAM O QUADRADO DE 1000 METROS TRANSVERSA UNIVERSAL DE MERCATOR, ZONA 20, ELIPSÓIDE 84, SISTEMA GEODÉSICO MUNDIAL DE 1984.

USERS SHOULD REFER TO CORRECTIONS, ADDITIONS, AND COMMENTS TO THE NSA OPERATIONAL HELP DESK: 1-800-405-0898; COMMERCIAL 314-262-4864; DSN 603-4864.  
USUÁRIOS DEVERÃO REFERIR-SE ÀS CORREÇÕES, ADIÇÕES E COMENTÁRIOS ÀS AJUDAS DE ATENDIMENTO: 1-800-405-0898; COMÉRCIO 314-262-4864; DSN 603-4864.

© COPYRIGHT 1994 BY THE UNITED STATES GOVERNMENT  
© EL GOBIERNO DE LOS ESTADOS UNIDOS, 1994  
© O GOVERNO DOS ESTADOS UNIDOS, 1994  
NO SE INCLAMAN DERECHOS DE AUTOR BAJO TIPO  
NÃO SE INCLAMAM DIREITOS DE AUTOR BAIXO TIPO  
NO COPYRIGHT CLAIMED UNDER TITLE 17 U.S.C.  
NÃO SE INCLAMAM DIREITOS DE AUTOR BAIXO TIPO

