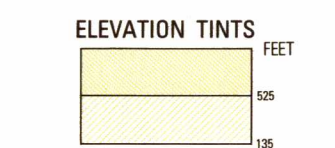
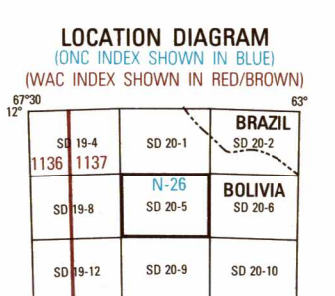


SERIES 1501 AIR SHEET SD 20-5 EDITION 1



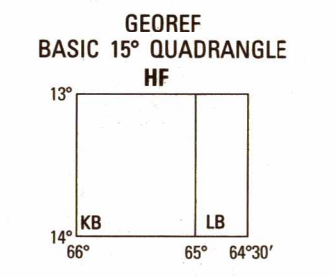
RELIABILITY OF THIS GRAPHIC
Compiled from best available source materials.

GLOSSARY GLOSARIO
Arroyo: intermittent stream, stream
Cuncho: marsh, swamp
Departamento: first-order administrative division
Laguna: lake
Rio: river



CONVERSION OF ELEVATIONS

FEET	METERS	FEET	METERS
1000	305	10000	3048
900	274	9000	2743
800	244	8000	2438
700	213	7000	2133
600	183	6000	1828
500	152	5000	1523
400	122	4000	1218
300	91	3000	913
200	61	2000	608
150	46	1500	453
100	31	1000	308



CAUTION
AIR INFORMATION CURRENT THROUGH 12 MARCH 1993
Consult NOTAMS and Flight Information Publications for the latest air information. The DOD Aeronautical Chart Issuance Manual or NOTAMS Aeronautical Chart Amendment document, for other chart revision information.

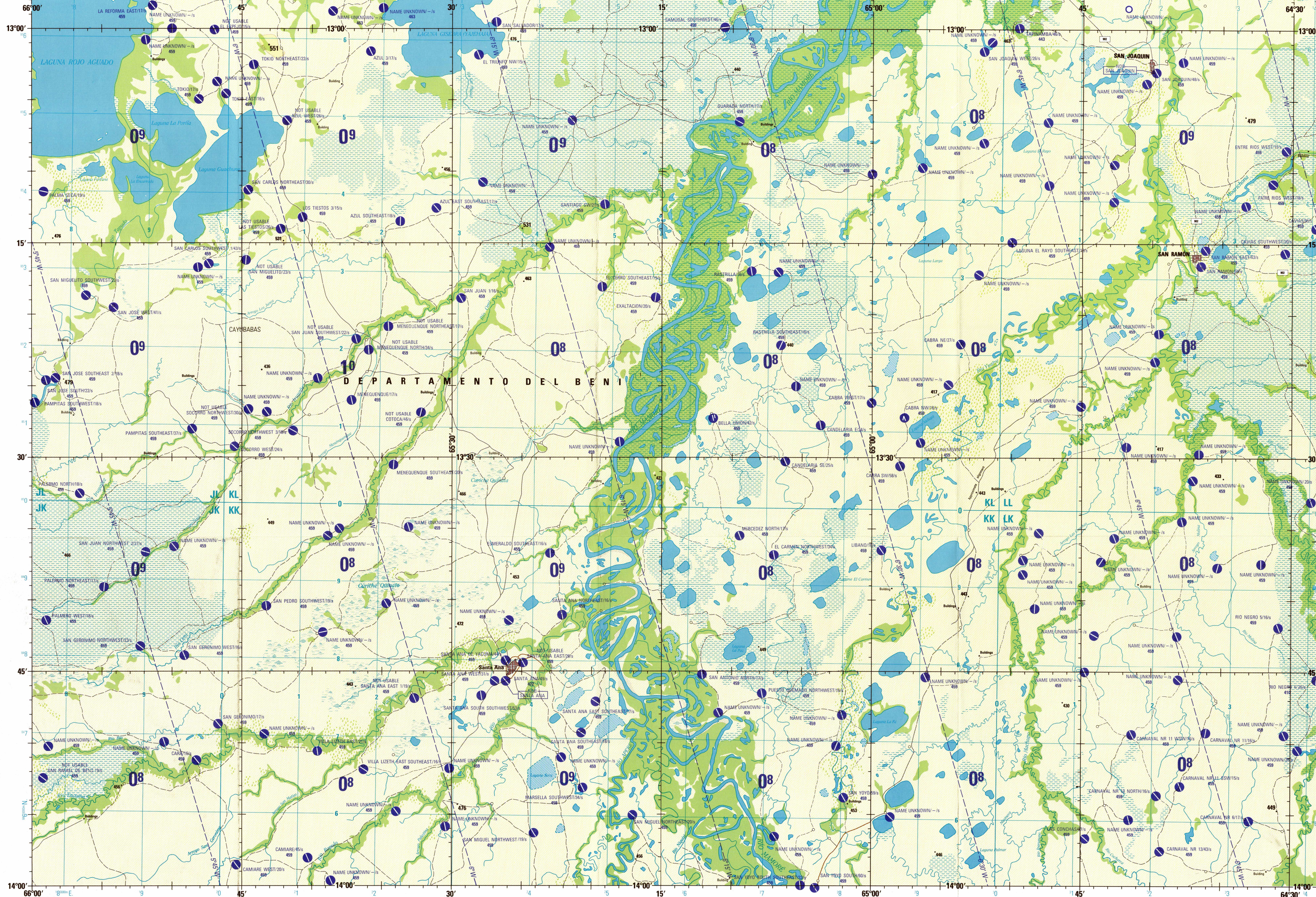
LINEAS DE IGUAL VARIACION MAGNETICA FOR 1990
(Annual rate of change 11' increase)

LINEAS DE IGUAL VARIACION MAGNETICA PARA 1990
(Índice anual de variación aumenta 11')

CAUTION
Vertical elevations, including spot heights, have been extracted from the most reliable available source. Other elevations are shown if they are 200 feet or more above ground level. See caution note.

LIMITED DISTRIBUTION: Distribution authorized to the Department of Defense, U.S. DoD contractors and to U.S. Government Agencies supporting DoD functions, by authority of the Director, Defense Mapping Agency, 30 May 1990. Other requests shall be referred to Headquarters, DMA, ATTN: SP3 Destroyer as "For Official Use Only."

SCALE 1:250,000
SANTA ANA, BOLIVIA
SERIES 1501 AIR SHEET SD 20-5 EDITION 1



Prepared and published by the Defense Mapping Agency Hydrographic/Topographic Center, Bethesda, MD. Compiled May 1993

COORDINATE CONVERSION WGS 84 TO GRID 98
Grid: Add 10m. E. Add 28m. N.
Geographic: UTM Zone 18Q, Datum: WGS 84

CONVERSION DE COORDENADA WGS 84 A LA RED 98
Cuadrícula: Zona 18Q, Datum: WGS 84
Geográfica: Zona 18Q, Datum: WGS 84

SAMPLE 1000 METER GRID SQUARE
EJEMPLO DE CUADRADO DE 1000 METROS DE CUADRADO

SAMPLE 1,000 METER REFERENCE
EJEMPLO DE REFERENCIA DE 1,000 METROS

100,000 M. SQUARE IDENTIFICATION
IDENTIFICACION DEL CUADRADO DE 100,000 M.

GRID ZONE DESIGNATION
DESIGNACION DE LA ZONA DE LA CUADRICULA

WHEN REPORTING OUTSIDE THE GRID ZONE DESIGNATION AREA IN WHICH THE GRID LINE, PREFIX OR SUFFIX DESIGNATION IS PRINTED, ANTICIPATE THE DESIGNATION OF THE ZONE OF COORDINATE A LA REFERENCIA ANTERIOR.

WHEN REPORTING OUTSIDE THE GRID ZONE DESIGNATION AREA IN WHICH THE GRID LINE, PREFIX OR SUFFIX DESIGNATION IS PRINTED, ANTICIPATE THE DESIGNATION OF THE ZONE OF COORDINATE A LA REFERENCIA ANTERIOR.

ATTENTION
THIS CHART CONTAINS MAXIMUM ELEVATION FIGURES (MEF)
The Maximum Elevation Figures show in quadrangles bounded by ticked lines of latitude and longitude are represented in "FOOTINGS" and "WINDOWS" of feet above mean sea level. The MEF is based on information available concerning the highest known feature in each quadrangle, including terrain and obstructions (trees, towers, antennas, etc.).

EXAMPLE: 12500

125

ROADS-CAMINOS
Dual Highway Carretera doble
All weather hard surface Transitable todo el año, superficie dura
More than two lanes wide Más que dos vías de ancho
Two lanes wide Dos vías de ancho
One lane wide Una vía de ancho
All weather, loose or light surface Transitable todo el año, superficie ligera
More than two lanes wide Más que dos vías de ancho
Two lanes wide Dos vías de ancho
Fair or dry weather, loose surface Transitable en tiempo bueno o seco, superficie ligera
Footpath, trail Sendero, vereda
Route marker Numeración de ruta

4 LANES DUAL
4 VÍAS DOBLES

4 LANES
4 VÍAS

3 LANES
3 VÍAS

CONTOUR INTERVAL APPROXIMATELY 135 FEET
EQUIDISTANCIA APROXIMADA DE LAS CURVAS DE NIVEL 135 PIES

BLUE NUMBERED LINES INDICATE THE 1000 METER UNIVERSAL TRANSVERSE MERCATOR GRID, ZONE 18Q, WORLD GEODETIC SYSTEM 1984 ELLIPSOID.
LAS LINEAS NUMERADAS AZULES INDICAN LOS 1000 METROS DE LA CUADRICULA TRANSVERSA UNIVERSAL DE MERCATOR, ZONA 18Q, ELIPSOIDE DEL SISTEMA GEODESICO MUNDIAL DE 1984

USERS SHOULD REFER CORRECTIONS, ADDITIONS, AND COMMENTS FOR IMPROVING THIS PRODUCT TO:
Director, Defense Mapping Agency, ATTN: FR, 613 Lee Highway, Fairfax, VA 22031-2137

RAILROADS-FERROCARRILES
Normal gauge 3'3 3/4" (1.0m)
Estación normal 3 pies 3/4 pulgadas (1.0m)

Station position
Posición de la estación

BOUNDARIES-LIMITES
International-International
First-order administrative division
División administrativa de primer orden

OTHER FEATURES-OTROS RASGOS
Landmark feature or object; Mine; Tank
Objeto conspicuo; Mina; Tanque

Tunnel; Bridge or viaduct
Túnel; Puente o viaducto

Horizontal control point; Punto de control horizontal

RELIEF-RELIEVE
Levee; Sand dune; Arena
Tercel; Páramo o visadero

TERRAIN ELEVATIONS-ELEVACIONES DEL TERRENO
Spot elevation; Normal; Critical
Cota; Normal; Crítica

HIGHEST KNOWN elevation is 551 feet at the following coordinates:
Elevación MÁS ALTA CONOCIDA es de 551 pies en las siguientes coordenadas:
Geographic Geográfico: 13°01'S 65°43'W
Grid Cuadrícula: KLB959

VEGETATION-VEGETACION
Woods; Scattered trees; Bosques; Árboles dispersos
Orchard; Plantations; Viveyados; Huerto; plantaciones; viveros

ELEVATIONS IN FEET
ELEVACIONES EN PIES

HYDROGRAPHY-HIDROGRAFIA
Intermittent lake or pond; Disappearing stream
Lago o laguna intermitente; Corriente que desaparece

MARSH OR SWAMP; Land subject to inundation
Marisma or pantano; Terreno sujeto a inundación

AERODROMES (Military or Civil)
AERODROMOS (Militares o Civiles)
Runway pattern known
Diseño de la pista conocido

EDNA-Name Number
725

50-Length of longest runway to nearest hundreds of feet
Longitud de la pista más larga a los centenas de pies más próximos

Surface elevation; Normal; Critical
Superficie desconocida

725-Elevation; Elevación

Runway pattern unknown
Diseño de la pista desconocido

RADIO AIDS TO NAVIGATION
AYUDAS ELECTRONICAS A LA NAVEGACION
VHF OMNI RANGE (VOR)
EXTENSION DE LA SEÑAL DE VHF OMNI (VOR)

VORTAC VORTAC
TACAN TACAN
VOR with DME VOR con DME

RADIO FACILITIES FACILIDADES DE RADIO
RADIO RANGE LPFM
EXTENSION DE LA SEÑAL DE RADIO LPFM

MULTIPLE RADIO FACILITIES
MÚLTIPLES FACILIDADES DE RADIO

CONTROLLED AIRSPACE ESPACIO AÉREO CONTROLADO
ATLANTIC ADIZ

ADIZ ADIZ
EXTENSION DE LA SEÑAL DE RADIO LPFM

VISUAL AIDS AND OBSTRUCTIONS
AYUDAS VISUALES Y OBSTRUCCIONES

Obstruction Obstrucción
1108-Elevation of obstruction top, above sea level
Elevación de la cima de la obstrucción sobre el nivel del mar

(259)-Elevation of obstruction top, above ground level
Elevación de la cima de la obstrucción sobre el nivel del terreno

Group obstruction Grupo de obstrucciones

Power transmission line Línea transmisora de energía
Aero light, Marine light Luz aérea; Faro

NOTES-NOTAS
Powerlines are shown except within populated place limits.
Other obstructions are shown if they are 200 feet or more above ground level. See caution note.

On this graphic a line is generally considered as being 8 to 18 feet (2.5 to 5.5 meters) in width.
Referencia a la clasificación de ríos con cuidado.
BOUNDARY REPRESENTATION IS NOT NECESSARILY AUTHENTIC.
LA REPRESENTACION DE LIMITES NO DEBE CONSIDERARSE ORIGINAL.

© COPYRIGHT 1993 BY THE UNITED STATES GOVERNMENT.
© EL GOBIERNO DE LOS ESTADOS UNIDOS 1993.
NO SE NEGAN LOS DERECHOS DE AUTOR BAJO LEY DE DERECHOS DE AUTOR.

DMASSTGNO 1501ASD2005