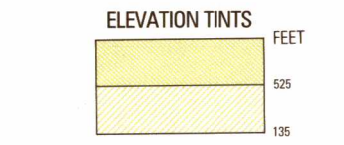
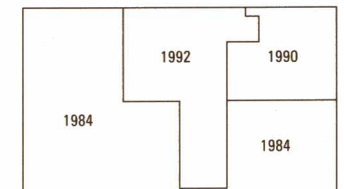


SERIES 1501 AIR SHEET SD 19-8 EDITION 1



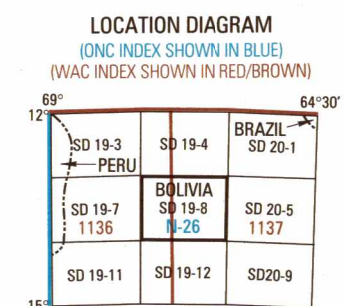
RELIABILITY OF THIS GRAPHIC (As determined by standard practices)



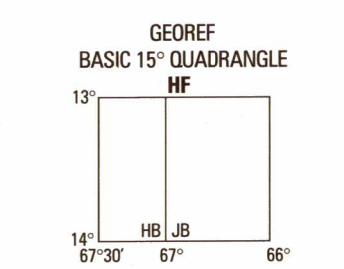
PLOTTING ACCURACY 90% ASSURANCE
Horizontal within 820 feet
Contours within 135 feet
GRAPHIC FEATURE DATE OF INFORMATION
ALL FEATURES See Diagram

Horizontal Datum: World Geodetic System
Vertical Datum: Mean Sea Level
Transverse Mercator Projection

GLOSSARY
Arroyo stream
Comunidad farm, populated place
Departamento first-order administrative division
Estancia populated place, ranch
Laguna lake
Quadrado stream
Rio stream



CONVERSION OF ELEVATIONS table with columns for FEET and METERS.



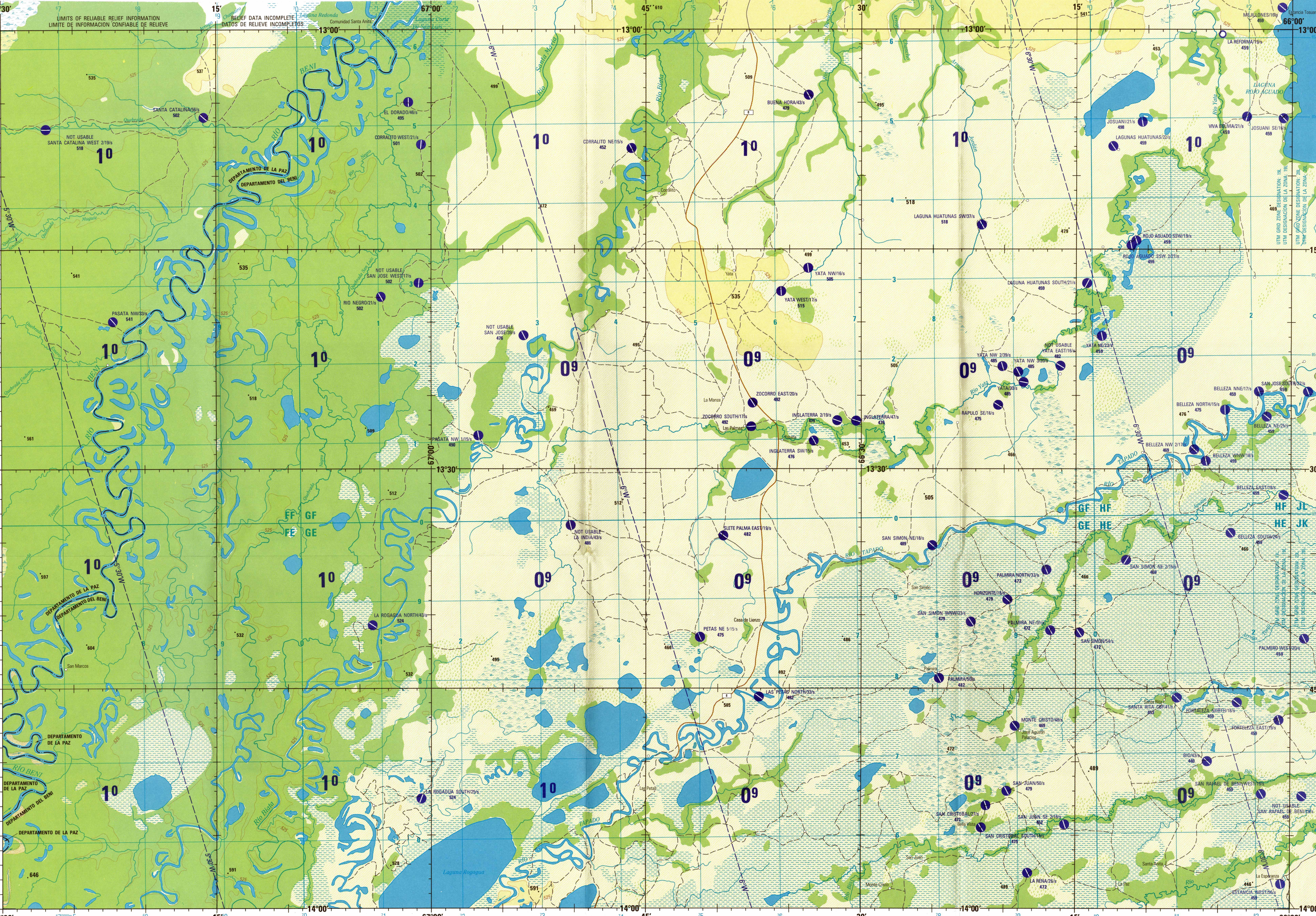
CAUTION
AIR INFORMATION CURRENT THROUGH 31 MAY 1996
Consult NOTAMS and High Information Publications for the latest air information; the 500 Aeronautical Chart Operating Manual or AFD 10-1, Aeronautical Chart Amendment Document, for other chart system information.

LINE OF EQUAL MAGNETIC VARIATION FOR 1996
(Annual rate of change, 11' increase)
LINEAS DE IGUAL VARIACION MAGNETICA PARA 1996
(indica anual de variacion, aumenta 11')

CAUTION
Vertical obstructions, including powerlines, have been extracted from this map; reliable source available. However, there is no assurance that all are shown, or that their locations or heights are exact.

LIMITED DISTRIBUTION
Distribution authorized to: DOD, NSA, NATO, etc. (NSA 3252-245-7000). Refer other requests to Headquarters, NIMA, ATTN: Distribution Officer, Dept. 725, Defense Mapping Agency, Washington, DC 20315-5000.

SCALE: 1:250,000
LAS PETAS, BOLIVIA
SERIES 1501 AIR SHEET SD 19-8 EDITION 1

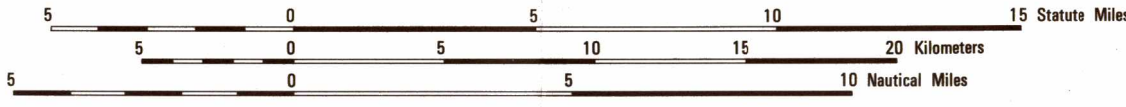


Prepared and published by the Defense Mapping Agency. Compiled March 1995.

ELEVATIONS IN FEET
ELEVACIONES EN PIES

JOINT OPERATIONS GRAPHIC (AIR)

SCALE 1:250,000



CONTOUR INTERVAL APPROXIMATELY 135 FEET
EQUIDISTANCIA APROXIMADA DE LAS CURVAS DE NIVEL 135 PIES

BLUE NUMBERED LINES INDICATE THE 10,000 METER UNIVERSAL TRANSVERSE MERCATOR GRID, ZONE 18, WORLD GEODETIC SYSTEM ELLIPSOID.
LAS LINEAS AZULES NUMERADAS INDICAN LA CUADRICULA UTM DE 10,000 METROS, ZONA 18, ELIPSOIDE DEL SISTEMA GEODESICO MUNDIAL.

USERS SHOULD REFER TO CORRECTIONS, ADDITIONS, AND COMMENTS TO THE NIMA CUSTOMER HELP DISK: 1-800-455-0898; COMMERCIAL 314-260-6032; OR MAIL STOP P-37, 4800 SANGAMORE ROAD, BETHesda, MD 20810-5033.

© COPYRIGHT 1996 BY THE UNITED STATES GOVERNMENT.
NO COPYRIGHT CLAIM UNDER TITLE 17 U.S.C.
© EL GOBIERNO DE LOS ESTADOS UNIDOS, 1996
NO SE RECLAMAN DERECHOS DE AUTOR BAJO TITULO 17 U.S.C. (COODIGO DE LOS ESTADOS UNIDOS)

ROADS-CARRETERAS

- All weather hard surface Superficie dura para todo clima
More than two lanes wide Mas de dos carriles de ancho
Two lanes wide Dos carriles de ancho
All weather, loose or light surface Superficie ligera o suelta para todo clima
Two lanes wide Dos carriles de ancho
One lane wide Un carril de ancho
Fair or dry weather, loose surface Saca o buen clima, superficie suelta
Cart track Camino para carreta
Route marker Marcador de ruta

RAILROADS-FERROCARRILES

- Normal gauge 1.0 m (3'3 3/4")
Entrenvia normal 1.0 m (3'3 3/4")

BOUNDARIES-LIMITES

- International Internacional
First-order administrative division Divisiva administrativa de primer orden

VEGETATION-VEGETACION

- Woods; Scattered trees Bosque; Arboles esparcidos
Hydrography-Hidrografia
Land subject to inundation Terreno sujeto a inundacion
Sand Area
Swamp, marsh Marisma, pantano

AERODROMES (Military or Civil)

- AERODROMOS (Militares o Civiles)
Runway pattern known Patrón de pista de aterrizaje conocido
EDNA-Name Number
50-Length of longest runway to nearest hundreds of feet
Longitud de la pista más larga a las centenas de pies más próximas
Soft or unimproved surface Superficie suave o no mejorada
Unknown surface Superficie desconocida
728-Elevation Altitud
Runway pattern unknown Patrón de pista de aterrizaje desconocido

VISUAL AIDS AND OBSTRUCTIONS

- AUXILIOS VISUALES Y OBSTRUCCIONES
Obstruction Obstrucción
1100-Elevation of obstruction top, above sea level
Altitud de obstrucción punta, sobre el nivel del mar
(250)-Elevation of obstruction top, above ground level
Altitud de obstrucción punta, sobre el nivel del suelo
Group obstruction Grupo de obstrucciones
Radio facility obstruction Obstrucción de facilidades de radio
Power transmission line Línea de alta tensión

TERRAIN ELEVATIONS-ELEVACIONES DEL TERRENO

- Spot elevation normal; critical Cota; normal; critical 846 840
HIGHEST elevation is UNKNOWN
Elevación más alta DESCONOCIDA

ATTENTION

THIS CHART CONTAINS MAXIMUM ELEVATION FIGURES (MEF)
The Maximum Elevation Figures shown in quadrangles bounded by ticked lines of latitude and longitude are represented in THOUSANDS and HUNDREDS of feet above mean sea level. The MEF is based on information available concerning the highest known features in each quadrangle, including terrain and obstructions (trees, towers, antennas, etc.).
EXAMPLE: 12,000 feet. 125

NOTES-NOTAS

Powerlines are shown except within populated place tints. Other obstructions are shown if they are 200 feet or more above ground level. See caution note.
Se muestran líneas de alta tensión con la excepción de dentro de las áreas en tinta que representan lugares poblados. Se muestran otras obstrucciones si están a 200 pies o más sobre el nivel del terreno. Ver Advertencia.
On this graphic a lane is generally considered as being 8 feet (2.5 meters) in width. In este gráfico se considera que una vía tenga 8 pies (2.5 metros) de ancho.

BOUNDARY REPRESENTATION IS NOT NECESSARILY AUTHORITY
LA REPRESENTACION DE LIMITES NO DEBE CONSIDERARSE OFICIAL
A REPRESENTAÇÃO DE LIMITES NÃO É NECESSARIAMENTE OFICIAL

NSN 764104227344
NIMA REF. NO. 1501ASD1908