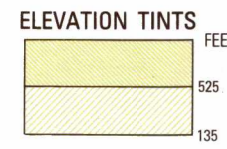
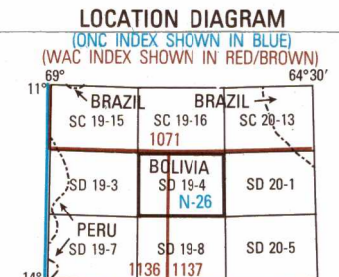


SERIES 1501 AIR SHEET SD 19-4 EDITION 1

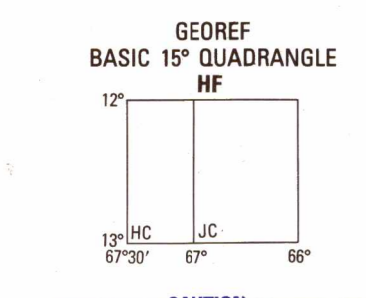


RELIABILITY OF THIS GRAPHIC Compiled from best available source materials. Horizontal Datum: World Geodetic System Vertical Datum: Mean Sea Level Transverse Mercator Projection

GLOSSARY Abandoned, Arroyo, Barraca, Centro gomero, Centro gomero castaifero, Comunidad, Departamento, Estancia, Laguna, Quebrada, Rio, Vado



CONVERSION OF ELEVATIONS table with columns for FEET and METERS, showing conversion values for various elevations.



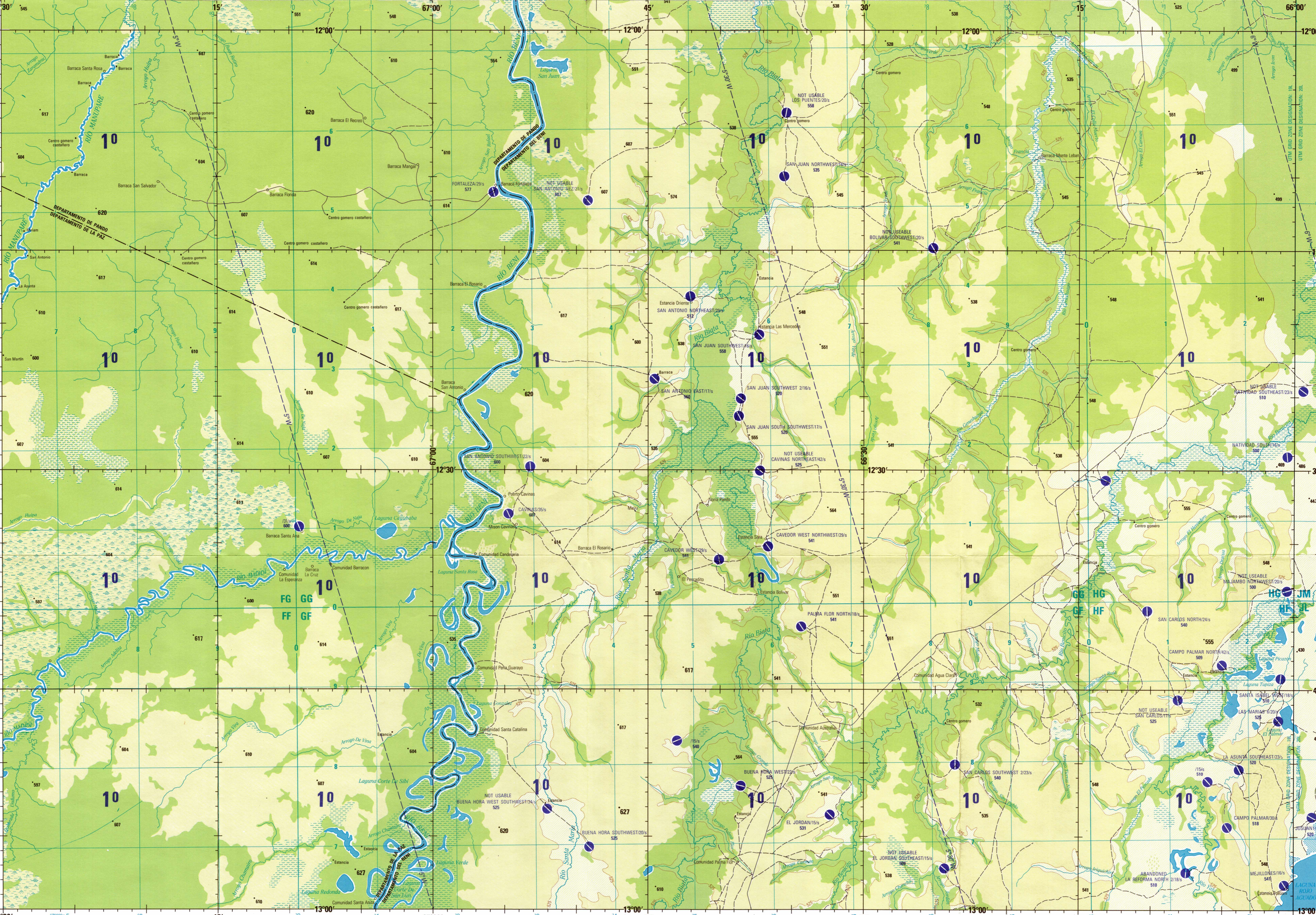
CAUTION AIR INFORMATION CURRENT THROUGH 15 JULY 1992. Consult NOTAMS and Flight Information Publications for the latest information.

CAUTION Vertical obstructions, including powerlines, have been extracted from the most reliable sources available. However, there is no assurance that all are shown or that their locations or heights are exact.

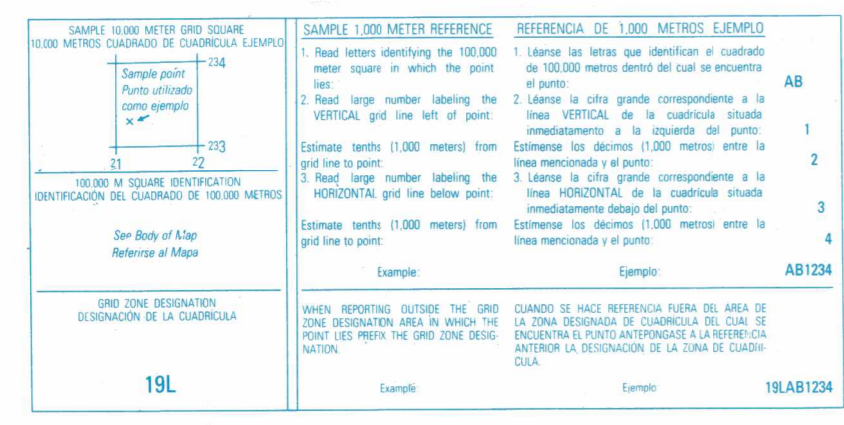
LIMITED DISTRIBUTION Distribution authorized to DOD, IAW 48 CFR 125.2-10.1-4. Release authorized to DOD contractors, IAW 48 CFR 125.2-10.1-4. Release authorized to Headquarters, NIMA, ATTN: Release Officer, Dept. 25, Geospatial Information Division, 1215 Jefferson Davis Highway, Arlington, VA 22202-4302.

SCALE 1:250,000 BARRACA FORTALEZA, BOLIVIA

SERIES 1501 AIR SHEET SD 19-4 EDITION 1



Prepared and published by the Defense Mapping Agency, Hydrographic/Topographic Center, Bethesda, MD. Compiled in July 1993.

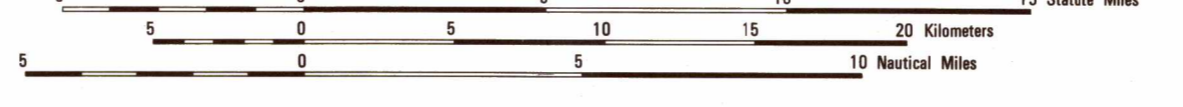


ELEVATIONS IN FEET ELEVACIONES EN PIES

ROADS - CARRETERAS: All weather hard surface, More than two lanes wide, Two lanes wide, All weather loose or light surface, More than two lanes wide, Two lanes wide, Fair or dry weather, loose surface, Secco o buen clima, superficie suelta, Cart track, Camino para carritas, Buena maquina, Marcador de ruta. RAILROADS - FERROCARRILES: Normal gauge 1.44m (4'8 1/2"), Estrecho normal 1.44m (4'8 1/2"). BOUNDARIES - LIMITES: International, First-order administrative division. VEGETATION - VEGETACION: Woods, Scattered trees, Bosque, Arboles esparcidos. HYDROGRAPHY - HIDROGRAFIA: Swamp, Land subject to inundation, Marisma, Terreno sujeto a inundacion.

JOINT OPERATIONS GRAPHIC (AIR)

SCALE 1:250,000



CONTOUR INTERVAL APPROXIMATELY 135 FEET CURVAS DE NIVEL 135 PIES APROXIMADAS

BLUE NUMBERED LINES INDICATE THE 100M METER UNIVERSAL TRANSVERSE MERCATOR GRID, ZONE 18 WORLD GEODETIC SYSTEM ELLIPSOID, LAS LINEAS AZULES NUMERADAS INDICAN LA CUADRICULA UTM DE 100M METROS, ZONA 18, ZONAS 18 DEL SISTEMA GEODETICO MONDIAL.

USERS SHOULD REFER CONNECTIONS, ADDITIONS, AND COMMENTS TO THE NIMA CUSTOMER HELP DESK: 1-800-455-0899; COMMERCIAL: 314-200-5032; OR WRITE TO: DIRECTOR, NATIONAL IMAGERY AND MAPPING AGENCY, ATTN: CDD, MAIL STOP P-37, 4800 SANGAMORE ROAD, BETHESDA, MD 20816-5003.

© COPYRIGHT 1993 BY THE UNITED STATES GOVERNMENT NO COPYRIGHT CLAIMED UNDER TITLE 17 U.S.C. © EL GOBIERNO DE LOS ESTADOS UNIDOS, 1993. NO SE RECLAMAN LOS DERECHOS DE AUTOR BAJO TITULO 17 U.S.C. (COPIRO DE LOS ESTADOS UNIDOS).

AERODROMES (Military or Civil) AERODROMOS (Militares o Civiles)

Runway pattern known, Runway pattern unknown, EDNA-Name, Nombre, Length of longest runway to nearest hundreds of feet, Longitud de la pista más larga a las centenas de pies más próximas, Soft or unimproved surface, Superficie suelta o no mejorada, Unknown surface, Superficie desconocida, Elevation, Altitud, Runway pattern unknown, Runway pattern unknown, Obstruction, Obstrucción, Elevation of obstruction top, above sea level, Altitud de obstrucción punta, sobre el nivel de mar, Elevation of obstruction top, above ground level, Altitud de obstrucción punta, sobre el nivel del suelo, Radio facility obstruction, Obstrucción de facilidades de radio, Power transmission line, Línea de alta tensión.

TERRAIN ELEVATIONS-ALTITUDES DEL TERRENO

Spot elevation: Normal, Critical, Altitud de un punto: Normal, Crítica, HIGHEST KNOWN elevation is 627 feet at the following coordinates: MAYOR altitud CONOCIDA es de 627 pies en las siguientes coordenadas: Geographic Coordinates: 12°53' S, 66°47' W Grid de la Cuadrícula: 12°53' S, 66°47' W

NOTES NOTAS

Power lines are shown except within populated place tints. Other obstructions are shown if they are 200 feet or more above ground level. Se muestran las líneas de alta tensión con excepción de dentro de las zonas edificadas (zona roja). Se muestran otras obstrucciones si están a 200 pies o más sobre el nivel del terreno. Ver advertencia. BOUNDARY REPRESENTATION IS NOT NECESSARILY AUTHORITATIVE LA REPRESENTACIÓN DE LIMITES NO DEBE CONSIDERARSE OFICIAL. On this graphic a lane is generally considered as being 8 feet (2.5 meters) in width. En este gráfico se considera que una vía tiene 8 pies (2.5 metros) de ancho.

ATTENTION THIS CHART CONTAINS MAXIMUM ELEVATION FIGURES (MEF) The Maximum Elevation Figures show in quadrangles bounded by ticked lines of latitude and longitude are represented in THOUSANDS and HUNDREDS of feet above mean sea level. The MEF is based on information available concerning the highest known feature in each quadrangle, including terrain and obstructions (trees, towers, antennas, etc.). EXAMPLE: 12500

NSN 7641014004655 ED NO 001 NIMA REF NO: 1501ASD1904