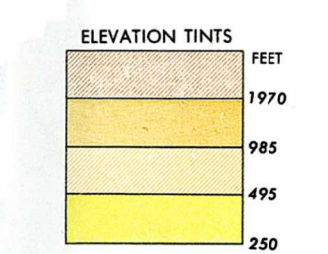


SERIES 1501 AIR SHEET SC 37-14 EDITION 1



RELIABILITY OF THIS SHEET (as determined by standard procedure)

Accuracy, as related to control of map:

- Horizontal positions: ± 100 meters
- Vertical positions: ± 100 meters
- Horizontal scale of map information: 1:500,000
- Vertical scale of map information: 1:100,000
- Horizontal scale of other features: ± 100 meters
- Vertical scale of other features: ± 100 meters

Map not certified:

The maximum portion of this sheet is in conformity with the latest edition of the International Standard for Aeronautical Information Publications (AIP) as of 15 August 1967.

Vertical datum: Mean Sea Level

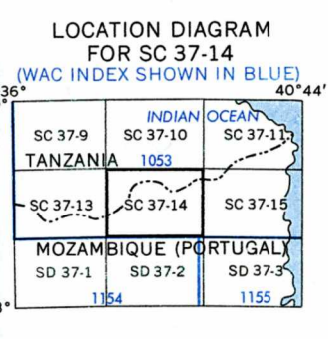
Horizontal datum: WGS 84

Scale: Graphic scale, 1:250,000

Projection: Transverse Mercator

Units: Metric (meters)

Notes: Contour interval 250 meters



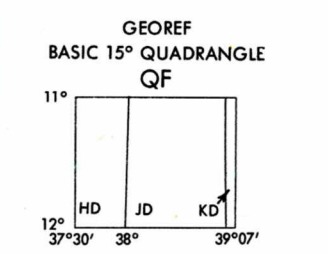
GLOSSARY

Monte.....mountain

Montañas.....mountains

Pantano.....swamp, lowlands

Rio.....stream

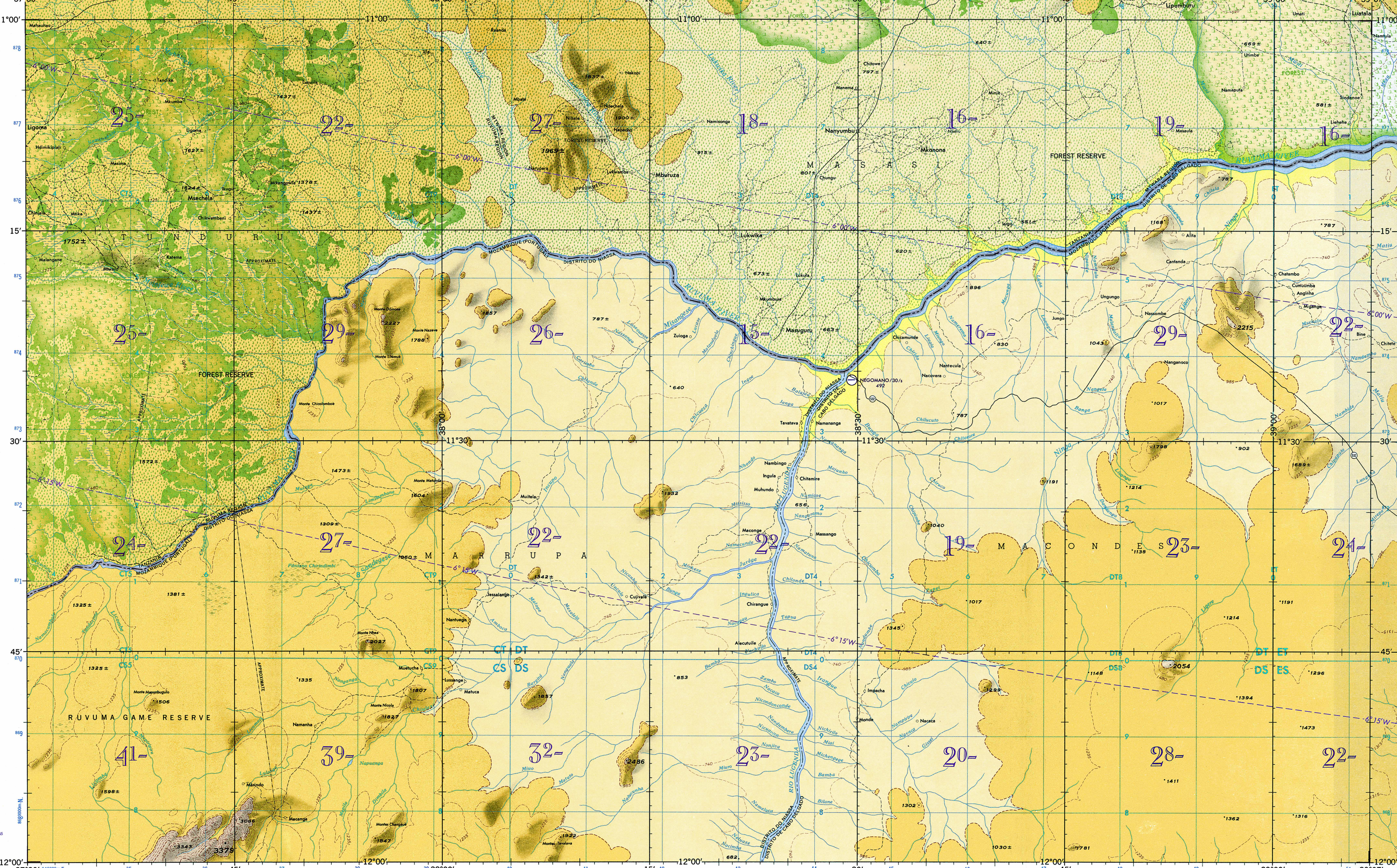


CAUTION

AIR INFORMATION CURRENT THROUGH 9 AUGUST 1967

Consult Notices to Airmen (NOTAMS) and Flight Information Publications (FLIPs) for the latest air information; the Chart Updating Manual (CHUM) for other chart revision information.

LINE OF EQUAL MAGNETIC VARIATION FOR 1965 (Annual rate of change 2' increase)



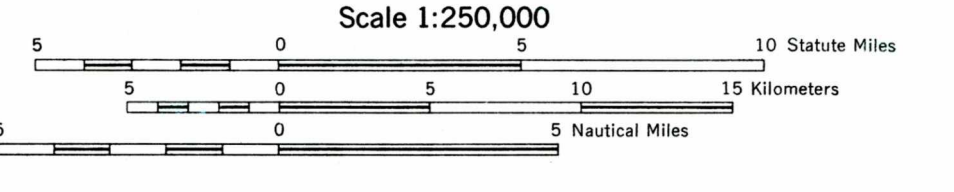
Prepared under the direction of the Defense Intelligence Agency and published by Army Map Service, Corps of Engineers, U.S. Army, Washington, D.C. Compiled in 1967 from best available source materials.



ELEVATIONS IN FEET

ROADS	All weather, hard surface	12 LANE
	Two or more lanes wide	
	All weather, loose or light surface	
	Two or more lanes wide	
	All weather, hard surface	
	One lane wide	
	All weather, loose or light surface	
	One lane wide	
	Fair or dry weather, loose surface, dirt road	
	Cart track	
	Footpath, trail	
RAILROADS	Normal gauge	Single track
	Narrow gauge	Multiple track
	Station	
	Christian church, school	
	Kraal; landmark feature; landmark object; mine	
BOUNDARIES	International	
	Primary administrative	
	Reservation	
VEGETATION	Orchard, plantation, vineyard	
	Woods-brushwood; scattered trees	
	Rice paddy; swamp	
	Land subject to inundation; Mboze; Mangrove	

JOINT OPERATIONS GRAPHIC (AIR)



CONTOUR INTERVAL APPROXIMATELY 250 FEET

TRANSVERSE MERCATOR PROJECTION

USERS SHOULD REFER CORRECTIONS, ADDITIONS, AND COMMENTS TO THE NIMA CUSTOMER HELP DESK: 1-800-955-6899; COMMERCIAL: 314-261-5522; OR WRITE TO: DIRECTOR, NATIONAL IMAGERY AND MAPPING AGENCY, ATTN: CDD, MAIL STOP 37, 800 SANGAMORE ROAD, BETHESDA, MD 20814-5003.

ELEVATIONS IN FEET

AERODROMES (Military or Civil)	EDNA/50/1
Field limits with runway pattern	725
EDNA-Name	50-length of longest runway to nearest hundreds of feet
50-length of longest runway to nearest hundreds of feet	50-length of longest runway to nearest hundreds of feet
725-Elevation	725-Elevation
Field limits, with runway pattern unknown	
Field limits unknown, with runway pattern	
Field limits and runway pattern unknown	
SEAPLANE BASE	
SEAPLANE (EMERGENCY)	
HELIPORT	

CONTROLLED AIRSPACE	ATLANTIC ADIZ
AIDZ	
VISUAL AIDS AND OBSTRUCTIONS	
Obstruction	1108 (259) A
1108-Elevation of obstruction top, above sea level	
(259)-Elevation of obstruction top, above ground level	
Group obstruction	
Radio facility obstruction	
Power transmission line	
TERRAIN ELEVATIONS	

HIGHEST TERRAIN elevations for each 15 MINUTE QUADRANGLE are represented in THOUSANDS and HUNDREDS of feet. They are omitted where relief information is inadequate. A minus sign (-) following the figure indicates that the figure is based on an estimated elevation.

EXAMPLES: 51 81-

NOTES

No obstructions 200 feet or more above ground level are known to exist within this area.

THE REPRESENTATION OF INTERNATIONAL BOUNDARIES IS NOT NECESSARILY AUTHENTICATIVE.

Reprinted by NIMA 3-00

NSN 7641014724967

NIMA Ref No. 1501ASC3714

ED. NO 001

SCALE 1:250,000

NANYUMBU, TANZANIA

SERIES 1501 AIR SHEET SC 37-14 EDITION 1

COMPANION SERIES 1501 SHEET IS EDITION 1

GRID ZONE DESIGNATION: 37L

TO USE A STANDARD REFERENCE ON THIS SHEET TO NEAREST 1000 METERS

CT	DT	ET	DT
CS	DS	ES	DS

TO USE THE SMALLER FIGURES OF THE GRID NUMBER, THERE ARE TWO METHODS: THE FULL COORDINATE, OR ONLY THE LARGER FIGURE OF THE GRID NUMBER. EXAMPLE: 869000

TO CONVERT FROM GRID TO UTM: 1. Read letters identifying 100,000 meter square in which the point lies. 2. Locate East VERTICAL grid line to LEFT of point and read LARGE figure. 3. Estimate tenths from grid line to point. 4. Locate East HORIZONTAL grid line BELOW point and read LARGE figure. 5. Estimate tenths from grid line to point. 6. Add 500,000 to the East VERTICAL grid number and the East HORIZONTAL grid number. 7. Add the East VERTICAL grid number to the East HORIZONTAL grid number. 8. Add the East VERTICAL grid number to the East HORIZONTAL grid number. 9. Add the East VERTICAL grid number to the East HORIZONTAL grid number. 10. Add the East VERTICAL grid number to the East HORIZONTAL grid number.