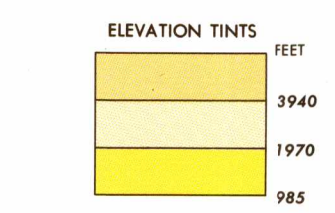


SERIES 1501 AIR SHEET SC 35-2 EDITION 2



RELIABILITY OF THIS GRAPHIC
Compiled from best available source materials

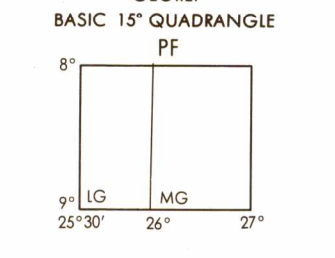
GLOSSARY
Flowe stream
Lac lake
Marais marsh
Mout hills, mountains
Parc National national park
Region first-order administrative division

LOCATION DIAGRAM
ONE INDEX SHOWN IN BLUE
TWO INDEX SHOWN IN RED

58 35-13	58 35-14	58 35-15
1025	1026	1027
58 35-1	58 35-2	58 35-3
1028	1029	1030
58 35-4	58 35-5	58 35-6
1031	1032	1033

CONVERSION OF ELEVATIONS

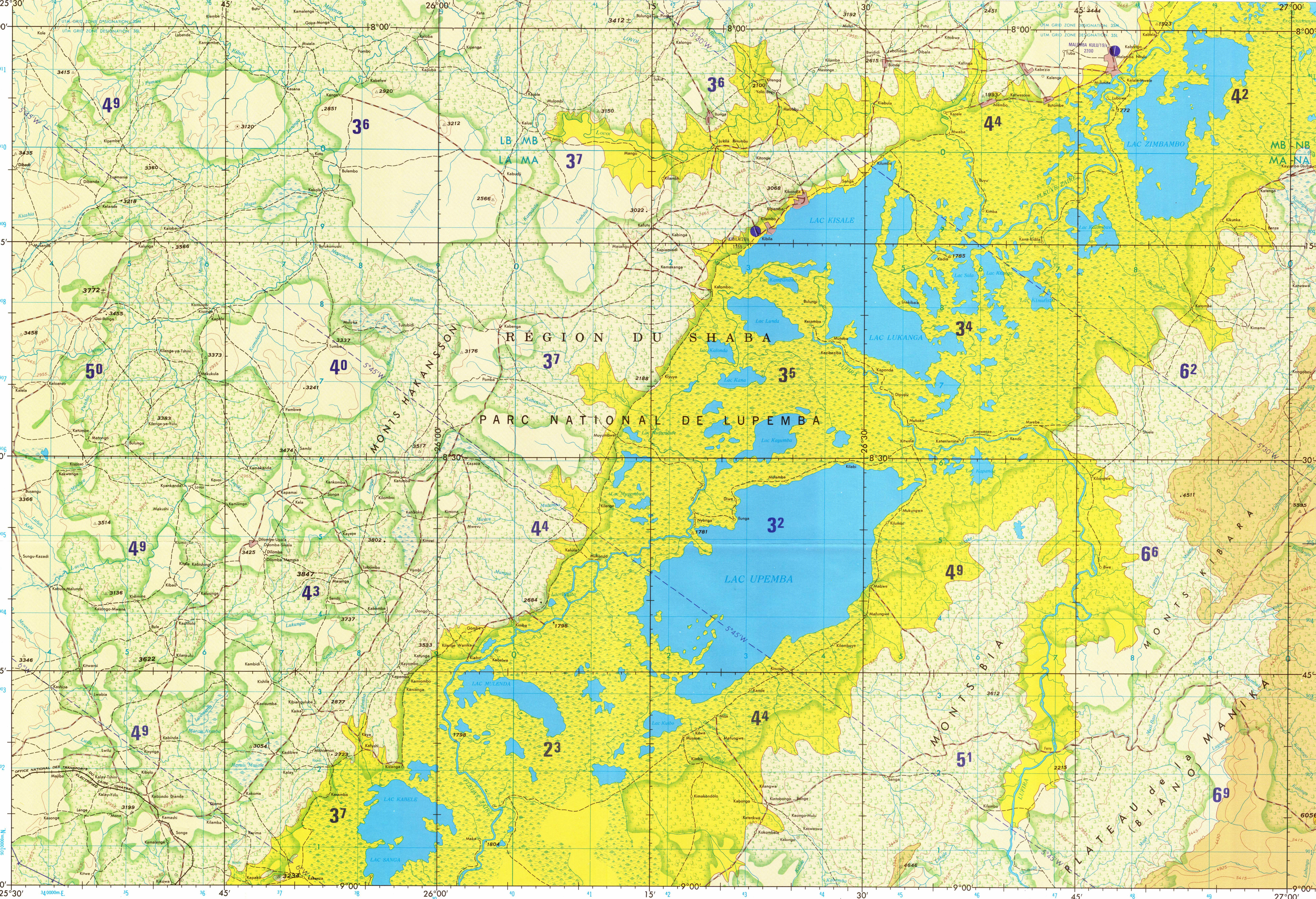
FEET	METERS	FEET	METERS
1000	305	10000	3048
900	274	9000	2743
800	244	8000	2438
700	213	7000	2134
600	183	6000	1829
500	152	5000	1524
400	122	4000	1219
300	91	3000	914
200	61	2000	610
100	31	1000	305



CAUTION
AIR INFORMATION CURRENT THROUGH
30 APRIL 1980

SCALE 1:250,000
LAC UPEMBA, ZAIRE

SERIES 1501 AIR SHEET SC 35-2 EDITION 2



Prepared and published by the Defense Mapping Agency
Hydrographic/Topographic Center, Washington, D.C.
Compiled January 1980.

POPULATED PLACES

First importance	KINSHASA
Second importance	MBANZA-NGUNGU
Third importance	BOHA
Fourth importance	Moanda
Fifth importance	Kabuku

VEGETATION

Woods	[Symbol]
Rice paddy	[Symbol]
Spring	[Symbol]
Intermittent stream	[Symbol]
Dispersing stream	[Symbol]
Intermittent lake	[Symbol]
Track of trail	[Symbol]

ROADS

All weather, hard surface	[Symbol]
Two or more lanes wide	[Symbol]
All weather, loose or light surface	[Symbol]
Two or more lanes wide	[Symbol]
Fair or dry weather, loose surface	[Symbol]
Track of trail	[Symbol]

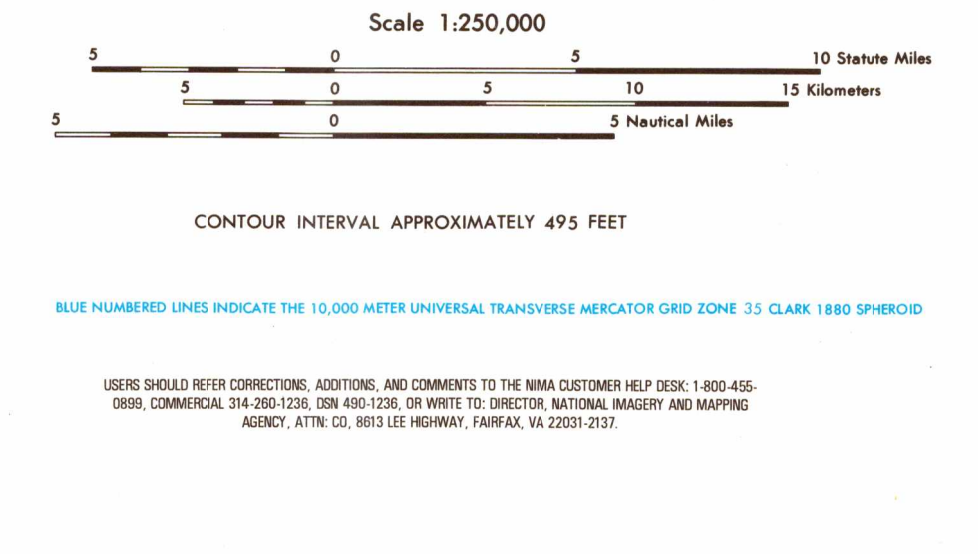
RAILROADS

Normal gauge 1.067m (3.6')	[Symbol]
Narrow gauge	[Symbol]
Station location	[Symbol]

BOUNDARIES

International	[Symbol]
First-order administrative division	[Symbol]

JOINT OPERATIONS GRAPHIC (AIR)



AERODROMES (Military or Civil)

Field limits with runway pattern	[Symbol]
Field limits unknown, with runway pattern	[Symbol]
Field limits and runway pattern unknown	[Symbol]
HELPORT	[Symbol]
RADIO FACILITIES	[Symbol]
MULTIPLE RADIO FACILITIES	[Symbol]

VISUAL AIDS AND OBSTRUCTIONS

Obstruction	[Symbol]
Group obstruction	[Symbol]
Radio facility obstruction	[Symbol]
Power transmission line	[Symbol]
Visual ground sign	[Symbol]
Aero light; Marine light	[Symbol]

ATTENTION

THIS CHART CONTAINS MAXIMUM ELEVATION FIGURES (MEF)

The Maximum Elevation Figures shows in quadrangles bounded by ticked lines of latitude and longitude are represented in THOUSANDS and HUNDREDS of feet above mean sea level. The MEF is based on information available concerning the highest known feature in each quadrangle, including terrain and obstructions (trees, towers, antennas, etc.) in areas of extensive available relief. The MEF is shown by a note spaced across the area.

EXAMPLE: 12500 feet

125

NOTES

Roads are classified by conversion from source maps and other information and are not verified by reconnaissance. The average lane width in this area is 10 to 13 feet. All weather roads are subject to brief interruption during periods of heavy rainfall. Railroads in Zaire are operated by S.N.C.Z. (Société Nationale de Chemins de fer Zairois)-Zaire National Railway Corporation. Names for symbolized populated places are omitted where information is not available or where density of detail does not permit their inclusion.

NOTES

No obstructions 200 feet or more above ground level are known to exist in this area.

THE REPRESENTATION OF INTERNATIONAL BOUNDARIES ON THIS GRAPHIC IS NOT NECESSARILY AUTHORITATIVE. Alignment of all boundaries is approximate.