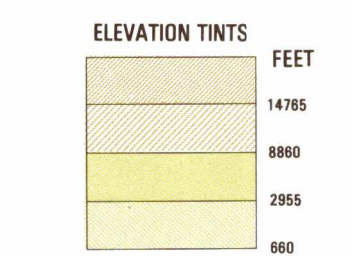


SERIES 1501 AIR SHEET SC 18-14 EDITION 1



RELIABILITY OF THIS GRAPHIC (as determined by standard practices)

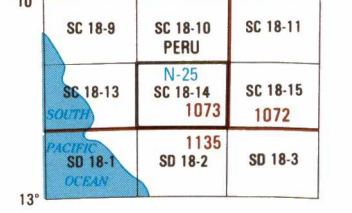
Table with 2 columns: Year (1989, 1994) and Plotting Accuracy (90% Assurance). Includes a graphic feature table with columns for feature name and date of information.

Horizontal Datum: World Geodetic System Vertical Datum: Mean Sea Level Transverse Mercator Projection

GLOSSARY

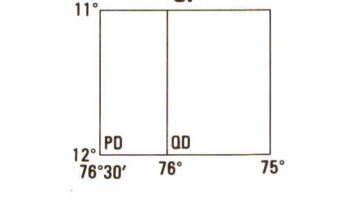
Table of geographical terms and their symbols, including Abandonado, Acueducto subterráneo, Almacenamiento agrario, etc.

LOCATION DIAGRAM (MAC INDEX SHOWN IN BLUE)



CONVERSION OF ELEVATIONS table with columns for Feet and Meters, showing conversion factors for various elevation ranges.

GEOREF BASIC 15° QUADRANGLE



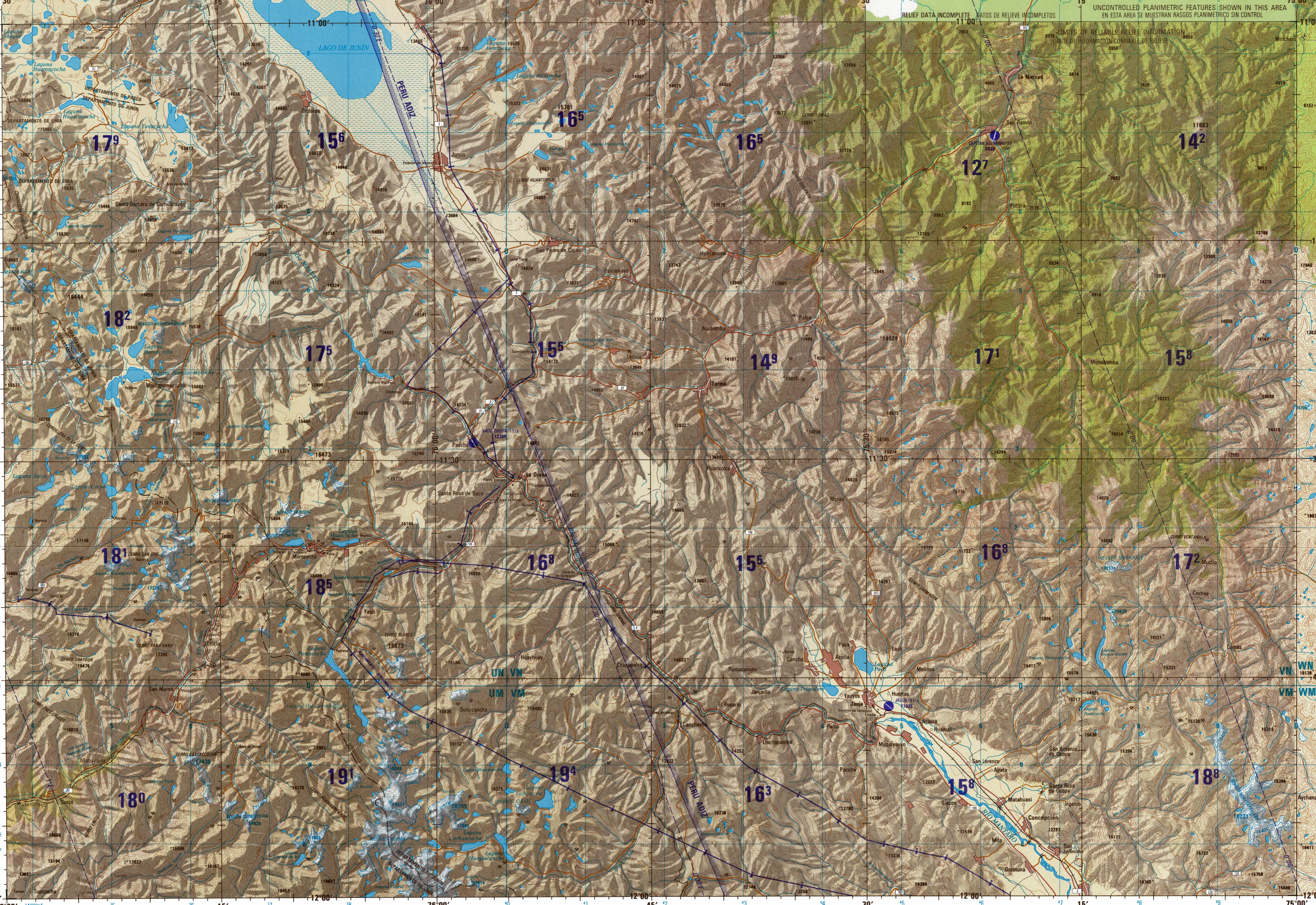
AIR INFORMATION CAUTION

Vertical obstructions, including powerlines, have been extracted from the most reliable sources available. However, there is no assurance that they are shown, or that their locations or heights are exact.

LIMITED DISTRIBUTION:

Distribution authorized to DoD, IAW 10 U.S.C. §§ 1320 and 2396. Release authorized to U.S. DoD contractors IAW 48 C.F.R. § 252.245-7000. Refer other requests to Headquarters, DMA, ATTN: Release Officer, Stop A-19, Dayton, OH. For Official Use Only. Removal of this caveat is prohibited.

SCALE 1:250,000 LA OROYA, PERU SERIES 1501 AIR SHEET SC 18-14 EDITION 1



Prepared and published by the Defense Mapping Agency. Compiled November 1994.

CAUTION

Vertical obstructions, including powerlines, have been extracted from the most reliable sources available. However, there is no assurance that they are shown, or that their locations or heights are exact.

LIMITED DISTRIBUTION:

Distribution authorized to DoD, IAW 10 U.S.C. §§ 1320 and 2396. Release authorized to U.S. DoD contractors IAW 48 C.F.R. § 252.245-7000. Refer other requests to Headquarters, DMA, ATTN: Release Officer, Stop A-19, Dayton, OH. For Official Use Only. Removal of this caveat is prohibited.

SCALE 1:250,000 LA OROYA, PERU SERIES 1501 AIR SHEET SC 18-14 EDITION 1

ELEVATIONS IN FEET ELEVACIONES EN PIES

Table showing elevation conversion examples and instructions for reading contour lines.

ROADS-CARRETERAS

Table of road symbols and their descriptions, including All weather, loose or light surface, and Two lanes wide.

RAILROADS-FERROCARRILES

Table of railroad symbols and their descriptions, including Normal gauge and Electric.

BOUNDARIES-LIMITES

Table of boundary symbols and their descriptions, including First-order administrative division and Other features.

OTHER FEATURES-OTRAS CARACTERISTICAS

Table of other features symbols and their descriptions, including School, Church, Mosque, Synagogue, Cemetery, etc.

JOINT OPERATIONS GRAPHIC (AIR)



SCALE 1:250,000 CONTOUR INTERVAL APPROXIMATELY 330 FEET EQUIDISTANCIA APROXIMADA DE LAS CURVAS DE NIVEL 330 PIES

BLUE NUMBERED LINES INDICATE THE 10,000 METER UNIVERSAL TRANSVERSE MERCATOR GRID, ZONE 18 WORLD GEODETIC SYSTEM ELLIPSOID. LAS LINEAS AZULES NUMERADAS INDICAN LA CUADRICULA TRANSVERSA UNIVERSAL DE MERCATOR DE 10,000 METROS, ZONA 18, ELLIPSOIDE DEL SISTEMA GEODESICO MUNDIAL.

COORDINATE CONVERSION WGS 84 TO PSAD 56. CONVERSION DE COORDENADAS DE WGS 84 A PSAD 56. Geoid: Mean Sea Level (MSL). Datum: Mean Sea Level (MSL). Geographic: NAD 83. UTM: UTM Zone 18S. UTM: UTM Zone 18S.

USERS SHOULD REFER CORRECTIONS, ADDITIONS, AND COMMENTS TO THE DMA CUSTOMER HELP DESK: 1-800-456-8999. COMMERCIAL 314-263-1238. DSN 496-1238. OR WRITE TO: DIRECTOR, DEFENSE MAPPING AGENCY, ATTN: ATC, 8613 LEE HIGHWAY, FAIRFAX, VA 22031-2137.

SELECCION A LOS LECTORES QUE TIENGAN CORRECCIONES, ADICIONES Y COMENTARIOS, DIRIGIRSE AL CENTRO DE ASISTENCIA DMA: 1-800-456-8999. NUMERO COMERCIAL, 314-263-1238, DSN 496-1238, O ESCRIBIR AL DIRECTOR, DEFENSE MAPPING AGENCY, ATTN: ATC, 8613 LEE HIGHWAY, FAIRFAX, VA 22031-2137.

© COPYRIGHT 1996 BY THE UNITED STATES GOVERNMENT. NO COPYRIGHT CLAIMED UNDER TITLE 17 U.S.C. © EL GOBIERNO DE LOS ESTADOS UNIDOS, 1996. NO SE RECLAMAN DERECHOS DE AUTOR BAJO TITULO 17 U.S.C. (EDICION DE LOS ESTADOS UNIDOS)

AERODROMES (Military or Civil) AERODROMOS (Militares o Civiles)

Table of aerodrome symbols and their descriptions, including Runway pattern known and Runway pattern unknown.

ELEVATIONS IN FEET ELEVACIONES EN PIES

Table of elevation symbols and their descriptions, including Spot elevation, Normal, Critical, and Highest known elevation.

VISUAL AIDS AND OBSTRUCTIONS OBSTRUCCIONES Y AYUDAS VISUALES

Table of visual aid symbols and their descriptions, including Obstruction, Power transmission line, and Radio facility obstruction.

TERRAIN ELEVATIONS-ELEVACIONES DEL TERRENO

Table of terrain symbols and their descriptions, including Spot elevation, Normal, Critical, and Highest known elevation.

ATTENTION

THIS CHART CONTAINS MAXIMUM ELEVATION FIGURES (MEF) The Maximum Elevation Figures shown in quadrangles bounded by ticked lines of latitude and longitude are represented in THOUSANDS and HUNDREDS of feet above mean sea level. The MEF is based on information available concerning the highest known feature in each quadrangle, including terrain and obstructions (trees, towers, antennas, etc.). In areas of extreme weather, the MEF is shown by a note placed across the area.

EXAMPLE: 12,500 feet. 125

NOTES - NOTAS Powerlines are shown except within populated place limits. Other obstructions are shown if they are 200 feet or more above ground level. See caution note. Se muestran líneas de alta tensión con la excepción de áreas de las áreas en las que representan lugares poblados. Se muestran otras obstrucciones si están a 200 pies o más sobre el nivel del terreno. Ver advertencia. On this graphic a lane is generally considered as being 8 feet (2.5 meters) in width. En esta gráfica se considera que una vía tiene 8 pies (2.5 metros) de ancho. BOUNDARY REPRESENTATION IS NOT NECESSARILY AUTHENTIC. LA REPRESENTACION DE LIMITES NO DEBE CONSIDERARSE DICIAL.

NSN 7641014236141 DMA STOCK NO. 1501ASC1814 ED. NO. 001