

SERIES 1501 AIR SHEET SC 18-5 EDITION 1

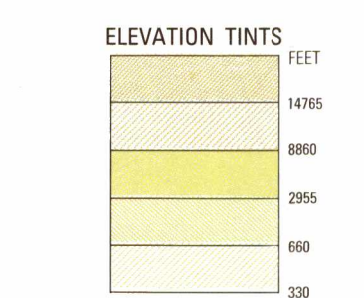
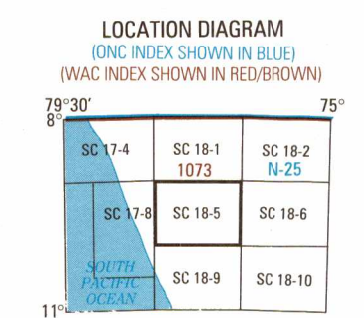


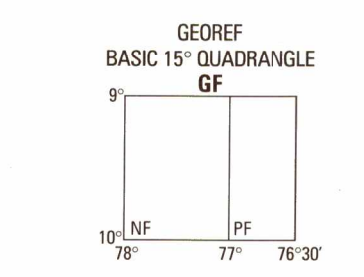
Table with 2 columns: Year (1991, 1990, 1993, 1989, 1991) and Reliability of this Graphic.

PLOTTING ACCURACY 90% ASSURANCE
Horizontal within 820 feet
Contours within 330 feet

GLOSSARY - GLOSARIO
Cerro(s) ... mountain(s)
Cordillera ... mountain range



CONVERSION OF ELEVATIONS table with columns for Feet and Meters.



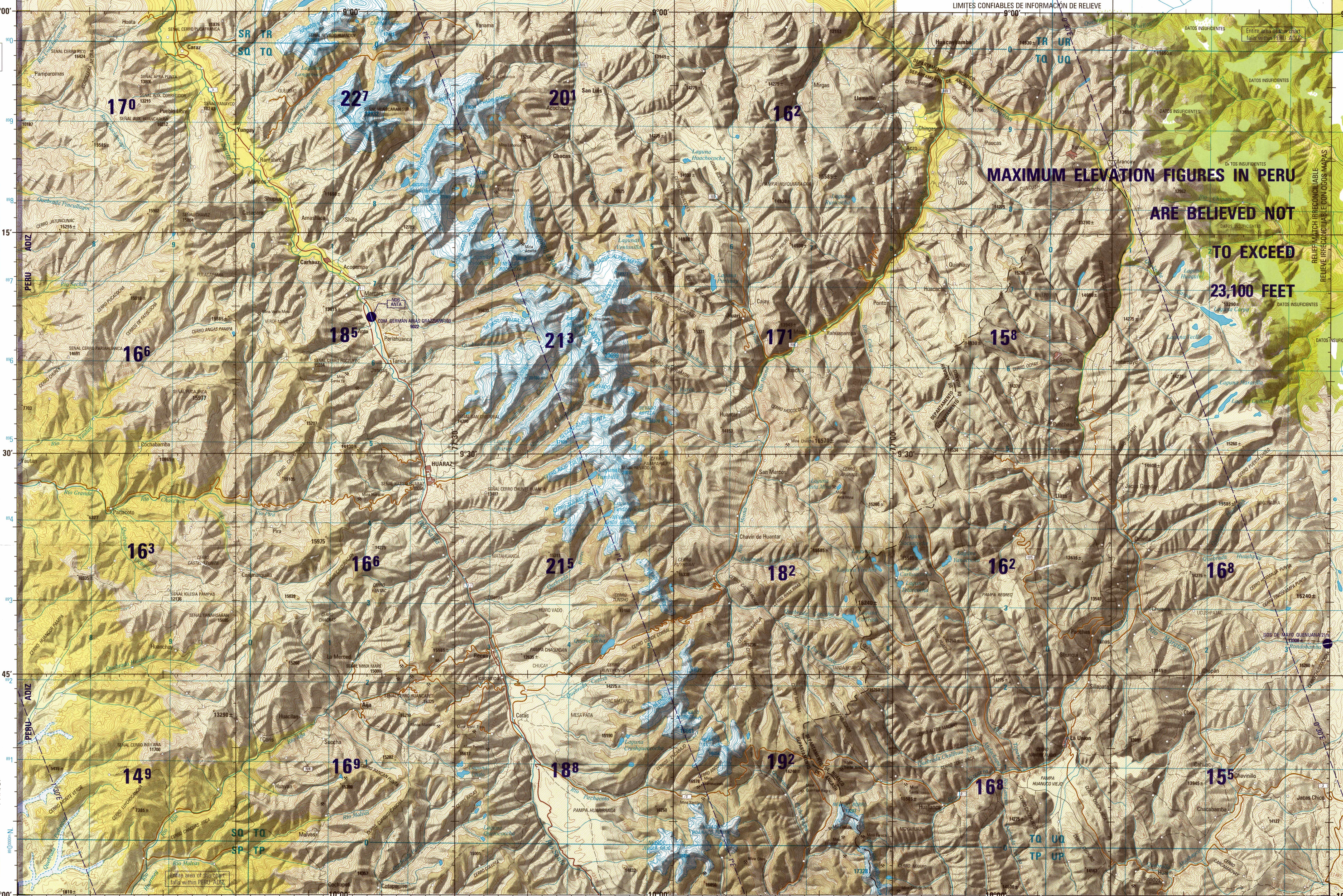
LIMITED DISTRIBUTION:
Distribution authorized to DoD, IAW 10 U.S.C. 1513 and 2796.

CAUTION
AIR INFORMATION CURRENT THROUGH 29 NOVEMBER 1995

CAUTION
Vertical obstructions, including powerlines, have been extracted from the most reliable sources.

LINES OF EQUAL MAGNETIC VARIATION FOR 1995
(Annual rate of change 8° decrease)

SCALE: 1:250,000
HUARAZ, PERU
SERIES 1501 AIR SHEET SC 18-5 EDITION 1

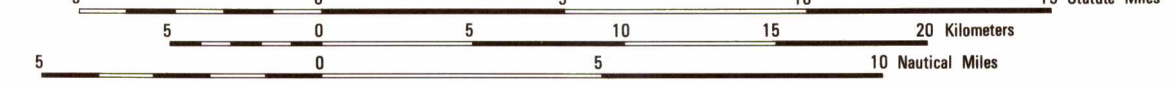


MAXIMUM ELEVATION FIGURES IN PERU ARE BELIEVED NOT TO EXCEED 23,100 FEET

ELEVATIONS IN FEET ELEVACIONES EN PIES

JOINT OPERATIONS GRAPHIC (AIR)

SCALE 1:250,000



CONTOUR INTERVAL APPROXIMATELY 330 FEET EQUIDISTANCIA APROXIMADA DE LAS CURVAS DE NIVEL 330 PIES

COORDINATE CONVERSION WGS 84 TO PSAD 56 table with columns for Geographic, UTM, and MGRS coordinates.

ROADS - CARRETERAS table with symbols and descriptions for various road types.

RAILROADS - FERROCARRILES table with symbols and descriptions for rail lines.

BOUNDARIES - LIMITES table with symbols and descriptions for administrative boundaries.

VEGETATION - VEGETACION table with symbols and descriptions for different types of vegetation.

HYDROGRAPHY - HIDROGRAFIA table with symbols and descriptions for water features.

AERODROMES (Military or Civil) table with symbols and descriptions for airports.

RADIO FACILITIES - FACILIDADES DE RADIO table with symbols and descriptions for radio stations.

TERRAIN ELEVATIONS - ALTITUDES DEL TERRENO table with symbols and descriptions for elevation points.

ATTENTION
THIS CHART CONTAINS MAXIMUM ELEVATION FIGURES (MEF)
The Maximum Elevation Figure shown in quadrangles bounded by dashed lines of latitude and longitude are represented in THOUSANDS and HUNDREDS of feet above sea level.

NSN 764101422795
DMS STOCK NO. 1501ASC1805

USERS SHOULD REFER CORRECTIONS, ADDITIONS, AND COMMENTS FOR IMPROVING THIS PRODUCT TO:
DIRECTOR, DEFENSE MAPPING AGENCY, ATTN: ATIS, 803 LEE HIGHWAY, FAIRFAX, VA, 22031-2107

© COPYRIGHT 1996 BY THE UNITED STATES GOVERNMENT.
NO COPYRIGHT CLAIMED UNDER TITLE 17 U.S.C.
© EL GOBIERNO DE LOS ESTADOS UNIDOS 1996.
NO SE RECLAMAN DERECHOS DE AUTOR BAJO TITULO 17 U.S.C.
© GOBIERNO DE LOS ESTADOS UNIDOS.