

SERIES 1501 AIR SHEET SB 34-15 EDITION 2
SERIES 1501 COMPANION SHEET IS EDITION 1



RELIABILITY OF THIS GRAPHIC
Compiled from best available source materials
Horizontal Datum: ARC 1950
Vertical Datum: Mean Sea Level
Transverse Mercator Projection

GLOSSARY
Provincia ... first-order administrative division
Region ... first-order administrative division

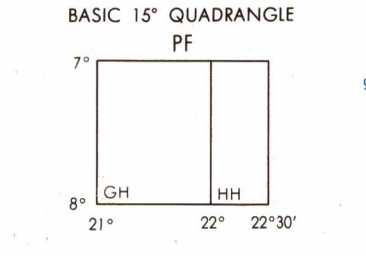
LOCATION DIAGRAM
(WAC INDEX SHOWN IN BLUE)
(IWC INDEX SHOWN IN RED/BROWN)

SB 34-10	SB 34-11	SB 34-12
SB 34-13	SB 34-14	SB 34-15
SB 34-16	SB 34-17	SB 34-18

ANGOLA	34	34.1	34.2
34.2	34.3	34.4	34.5

CONVERSION OF ELEVATIONS

FEET	METERS	FEET	METERS
1000	305	10000	3048
900	274	9000	2743
800	244	8000	2438
700	213	7000	2134
600	183	6000	1829
500	152	5000	1524
400	122	4000	1219
300	91	3000	914
200	61	2000	610
150	46	1500	457
100	31	1000	305

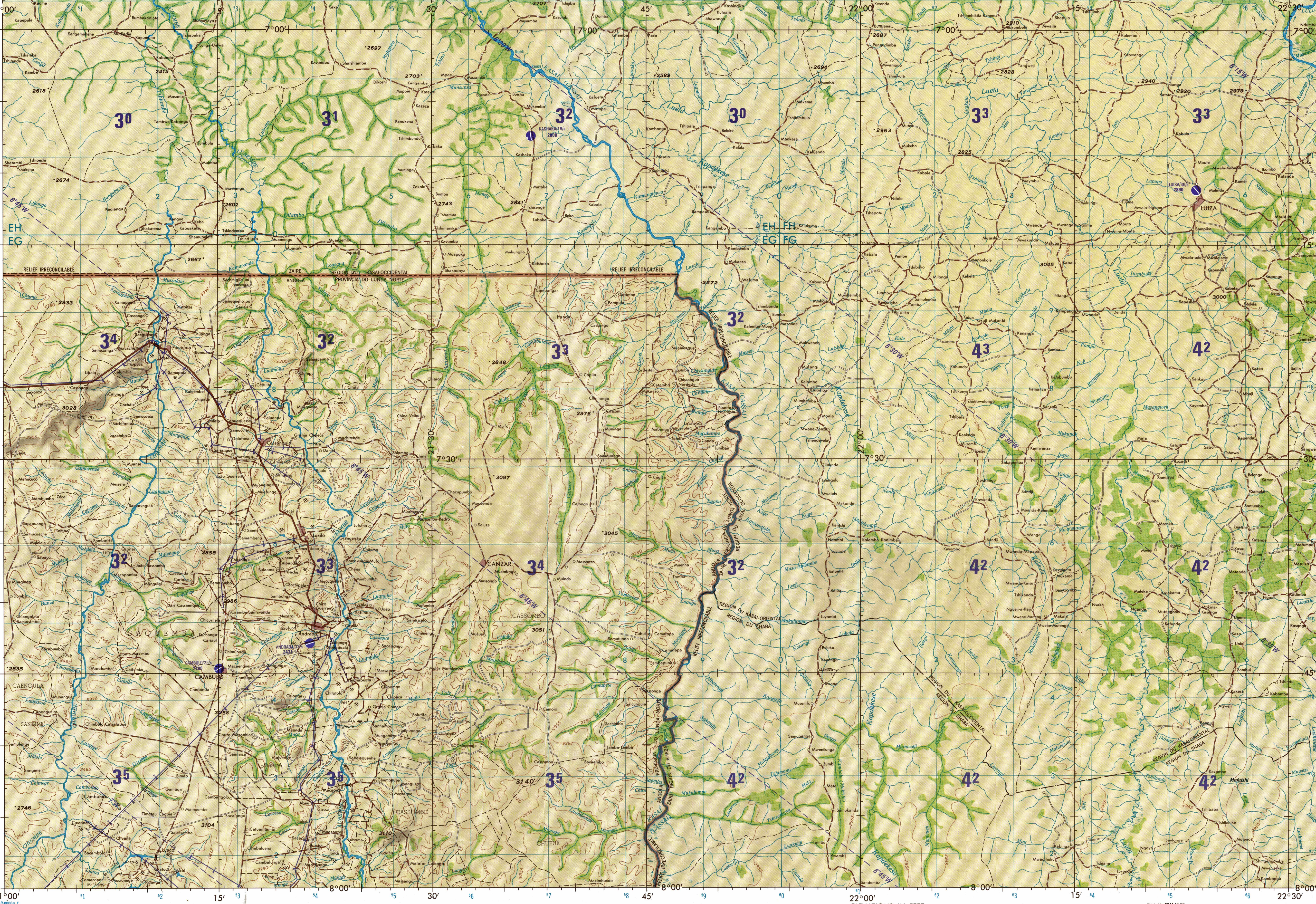


CAUTION
AIR INFORMATION CURRENT THROUGH MAY 1980
Consult NOTAMS and Flight Information Publications for the latest information on the 000 Aeronautical Chart Updating Manual or MOD II. Aeronautical Chart Amendment documents for other chart series information.

LIMITED DISTRIBUTION
Distribution authorized to DoD, IAW 10 U.S.C. 89130 & 2796. Release authorized to U.S. DoD contractors IAW 48 C.F.R. 5322-245-7002. Refer other requests to Headquarters, NIMA, ATTN: Release Officer, Stop A-10. Distribution as For Official Use Only. Removal of this caveat is prohibited.

SCALE 1:250,000
LUIZA, ZAIRE; ANGOLA

SERIES 1501 AIR SHEET SB 34-15 EDITION 2
SERIES 1501 COMPANION SHEET IS EDITION 1



100,000 METER GRID SQUARE

SAMPLE 1,000 METER REFERENCE

- Read letters identifying the 100,000 meter square in which the point lies.
- Read large number labeling the VERTICAL grid line left of point. Estimate tenths (1,000 meters) from grid line to point.
- Read large number labeling the HORIZONTAL grid line below point. Estimate tenths (1,000 meters) from grid line to point.

Example: AB1234

WHEN REPORTING OUTSIDE THE GRID ZONE DESIGNATION AREA IN WHICH THE POINT LIES, PREFIX THE GRID ZONE DESIGNATION.

GRID ZONE DESIGNATION: 34M

POPULATED PLACES

First importance: KINSHASA
Second importance: MBANZA-NGUNGU
Third importance: BOMA
Fourth importance: Moanda
Fifth importance: Kabubu

ROADS

All weather, hard surface
Two or more lanes wide
One lane wide
All weather, loose or light surface
Two or more lanes wide
One lane wide
Fair or dry weather, loose surface
Track or trail

RAILROADS

Narrow gauge 1.047m (3' 5 1/2")
Standard gauge 1.413m (4' 7 1/2")
Station location: Known, Unknown

BOUNDARIES

International
First-order administrative division

VEGETATION

Woods

HYDROGRAPHY

Rice paddy; land subject to inundation
Spring; Well; Perennial; Intermittent
Intermittent stream; Single; Double line
Disappearing stream; Swamp or marsh
Intermittent lake; Dry lake

OTHER FEATURES

Glaciers; Snowfield
Horizontal control point; Landmark; Mine

Levee; Dam or lock; Sand
Dunes; Crescent; Lateral; Ripple
Area name
K'A-MU

TERRAIN ELEVATIONS

Spot elevations: Normal; Critical
Highest known elevation is UNKNOWN
± following elevation value indicates accuracy is not within 100 feet.
THE REPRESENTATION OF INTERNATIONAL BOUNDARIES ON THIS GRAPHIC IS NOT NECESSARILY AUTHORITATIVE.

JOINT OPERATIONS GRAPHIC (AIR)
Scale 1:250,000

CONTOUR INTERVAL 165 FEET IN ANGOLA
CONTOUR INTERVAL 985 FEET IN ZAIRE

BLUE NUMBERED LINES INDICATE THE 10,000 METER UNIVERSAL TRANSVERSE MERCATOR GRID, ZONE 34, CLARK 1880 SPHEROID

USERS SHOULD REFER CORRECTIONS, ADDITIONS, AND COMMENTS TO THE NIMA CUSTOMER HELP DESK: 1-800-455-0889, COMMERCIAL: 314-260-2208, OR WRITING TO DIRECTOR, NATIONAL MAPS AND MAPING AGENCY, ATTN: CD, 8815 LEE HIGHWAY, FAIRFAX, VA 22031-2337

AERODROMES (Military or Civil)

Field limits with runway pattern
Field limits unknown, with runway pattern
Field limits and runway pattern unknown

HELIPORT

RADIO FACILITIES

RADIO RANGE LF/MF
MULTIPLE RADIO FACILITIES

EONA/50/s 725
50-Length of longest runway to nearest hundreds of feet
S-Soft or unimproved surface
U-Unknown surface
725-Elevation

RING HURN
NDB-RING
PARIS

VISUAL AIDS AND OBSTRUCTIONS

Obstruction
1108 (259)
Elevation of obstruction top, above sea level.
(259)-Elevation of obstruction top, above ground level.

Group obstruction
Radio facility obstruction
Power transmission line
Visual ground sign
Aero light; Marine light

CONTROLLED AIRSPACE

ADIZ
No obstructions 200 feet or more above ground level are known to exist within this area.
Alignment of all boundaries is approximate.

ATLANTIC ADIZ

ATTENTION
THIS CHART CONTAINS MAXIMUM ELEVATION FIGURES (MEF)

The Maximum Elevation Figures shown in quadrangles bounded by dotted lines of latitude and longitude are represented in THOUSANDS and HUNDREDS of feet above mean sea level. The MEF is based on information available concerning the highest known features in each quadrangle, including terrain and obstructions (dunes, towers, antennas, etc.). In areas of extensive unimproved terrain, the MEF is shown in a more spaced across the area.

EXAMPLE: 12,500 feet

125

NOTES
Roads are classified by conversion from source maps and other information and are not verified by reconnaissance.
The average lane width in this area is 3 to 4 meters (10 to 13 feet).
All weather roads are subject to brief interruption during periods of heavy rainfall.
Railroads in Zaire are operated by S.N.C.Z. (Société Nationale de Chemins de Fer Zaïrois)-Zairean National Railway Corporation.
Names for symbolized populated places are omitted where information is not available or where density of detail does not permit their inclusion.

NSN 764101401570
NIMA STOCK NO. 1501ASB3415