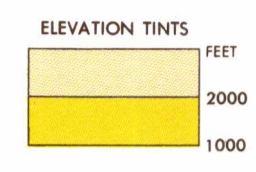
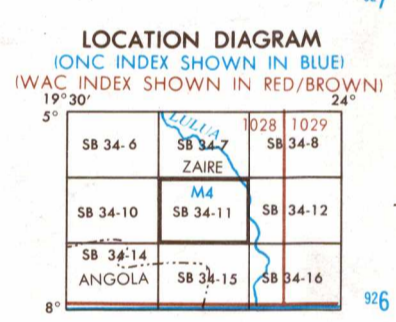


SERIES 1501 AIR SHEET SB 34-11 EDITION 2  
SERIES 1501 COMPANION SHEET IS EDITION 2



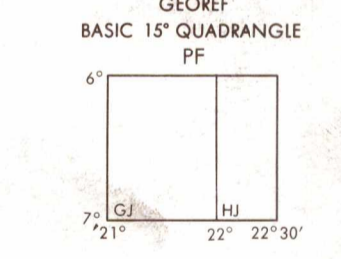
RELIABILITY OF THIS GRAPHIC  
Compiled from best available source materials  
Horizontal Datum: ABC 1950  
Vertical Datum: Mean Sea Level  
Transverse Mercator Projection

GLOSSARY  
Région first-order administrative division



CONVERSION OF ELEVATIONS

METERS	FEET	METERS	FEET
1000	3281	10000	32808
900	2953	9000	29529
800	2625	8000	26247
700	2297	7000	22966
600	1969	6000	19685
500	1640	5000	16404
400	1312	4000	13123
300	984	3000	9842
200	656	2000	6561
150	492	1500	4921
100	328	1000	3281



CAUTION  
AIR INFORMATION CURRENT THROUGH 18 JUNE 1979  
Small NOTAMS and Flight Information Publications for the latest information, the 000 Aeronautical Chart Updating Manual or MDI or ICAO Aeronautical Chart Amendment Document by other charting information

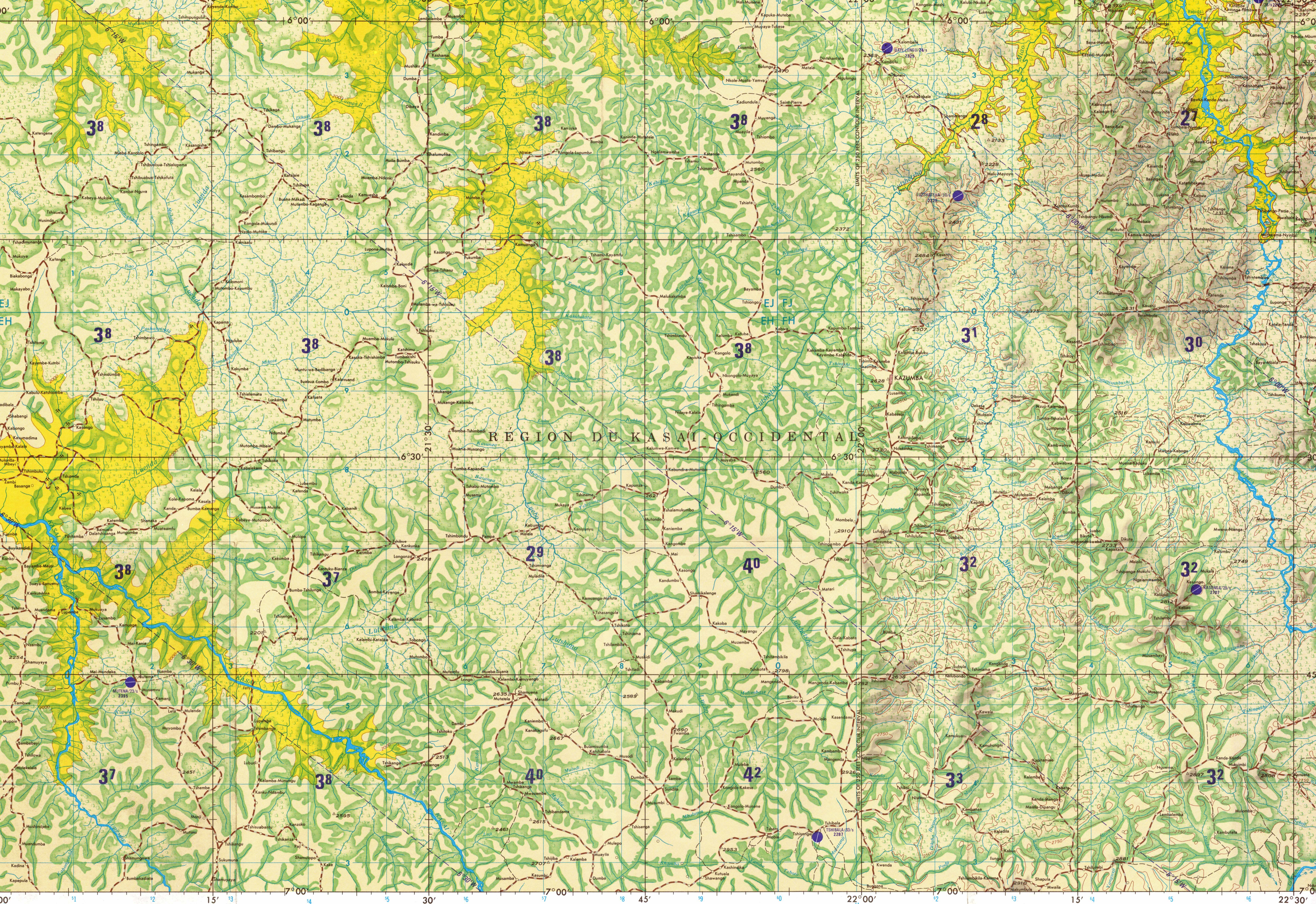
Lines of Equal Magnetic Variation  
FOR 1975  
(Annual rate of change 6' decrease)



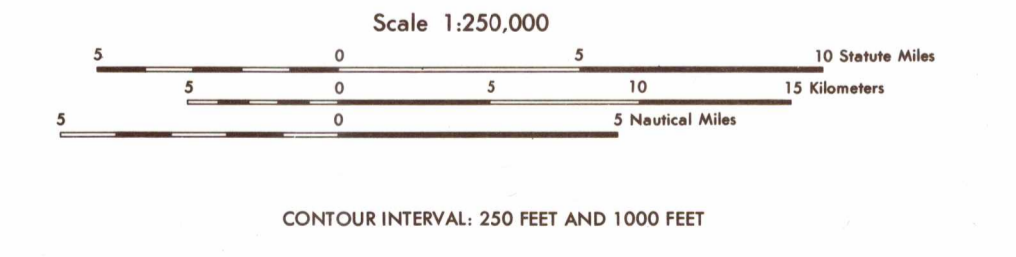
Prepared and published by the Defense Mapping Agency  
Hydrographic/Topographic Center, Washington, D.C.  
Compiled May 1979

SCALE 1:250,000  
KAZUMBA, ZAIRE

SERIES 1501 AIR SHEET SB 34-11 EDITION 2  
SERIES 1501 COMPANION SHEET IS EDITION 2



JOINT OPERATIONS GRAPHIC (AIR)



CONTOUR INTERVAL: 250 FEET AND 1000 FEET  
BLUE NUMBERED LINES INDICATE THE 10,000 METER UNIVERSAL TRANSVERSE MERCATOR GRID ZONE 34K, 1880 SPHEROID  
USERS SHOULD REFER CORRECTIONS, ADDITIONS, AND COMMENTS TO THE NIMA CUSTOMER HELP DESK: 1-800-456-0888; COMMERCIAL: 1-314-260-1200; DSN: 480-1738; OR WRITE TO: ATTN: CDD, MAIL STOP 9-31, NATIONAL MAPPING AND MAPPING AGENCY, 4500 DUNBAR ROAD, BETHESDA, MD 20815-5003

**POPULATED PLACES**

First importance: KINSHASA  
Second importance: MBANZA-NGUNGU  
Third importance: BOMA  
Fourth importance: MOANDA  
Fifth importance: KABUBU

**ROADS**

All weather, hard surface  
Two or more lanes wide  
One lane wide  
All weather, loose or light surface  
Two or more lanes wide  
One lane wide  
Dry or dry weather, loose surface  
Track or trail

**RAILROADS**

Normal gauge 1.067m (3'6")  
Narrow gauge  
Station locations: Known; Unknown

**BOUNDARIES**

International  
First-order administrative division

**VEGETATION**

Woods  
Rice paddy; land subject to inundation  
Spring; Wall; Perennial; intermittent  
Disappearing stream; Swamp or marsh  
Intermittent lake; Dry lake  
Track or trail

**OTHER FEATURES**

Glaciers; Snowfield  
Horizontal control point; Landmark; Mine

**TERRAIN ELEVATIONS**

Spot elevations: Normal, Critical  
Highest elevation is UNKNOWN  
The accuracy of all elevations shown on this graphic is not within 1000 feet.

**NOTES**

No obstructions 200 feet or more above ground level are known to exist in this area.

**AERODROMES (Military or Civil)**

Field limits with runway pattern  
EDNA-Name  
50 Length of longest runway to nearest hundreds of feet  
+ Soft or unimproved surface  
- Unknown surface  
725 Elevation

Field limits, with runway pattern unknown  
Field limits unknown, with runway pattern  
Field limits and runway pattern unknown

**HELIPORT**

**RADIO FACILITIES**

RADIO RANGE LF/MF  
MULTIPLE RADIO FACILITIES

**VISUAL AIDS AND OBSTRUCTIONS**

Obstruction  
1108 Elevation of obstruction top, above sea level  
(259) Elevation of obstruction top, above ground level

Group obstruction  
Radio facility obstruction  
Power transmission line  
Visual ground sign  
Aero light; Marine light

**CONTROLLED AIRSPACE**

ADIZ  
ATLANTIC ADIZ

THE REPRESENTATION OF INTERNATIONAL BOUNDARIES IS NOT NECESSARILY AUTHORITY.  
Alignment of all boundaries is approximate.

**ATTENTION**

THIS CHART CONTAINS MAXIMUM ELEVATION FIGURES (MEF)

The Maximum Elevation Figures shown in quadrangles bounded by ticked lines of latitude and longitude are represented in thousands of feet above mean sea level. The MEF is based on information available concerning the highest elevation in each quadrangle, including terrain, obstructions, towers, antennas, etc. In areas of extensive uncharted relief, the MEF is shown by a note spaced across the area.

EXAMPLE: 12,500 feet

**125**

**NOTES**

Roads are classified by conversion from source maps and other information and are not verified by reconnaissance.  
The average line width in this area is 12 to 13 feet.  
All weather roads are subject to brief interruption during periods of heavy rainfall.  
Railroads in Zaire are operated by S.N.C.Z. (Société Nationale des Chemins de Fer Zaïrois)-Zaire National Railway Corporation. Names for symbolized populated places are omitted where information is not available or where density of detail does not permit their inclusion.

NSN 7641014101503  
NIMA REF. NO. 1501ASB3411