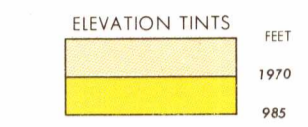


1:250,000 - EDITION 1
KILEMBE
CONGO (KINSHASA)
1501A SB 34-6



RELIABILITY OF THIS SHEET
(as determined by standard practices)
Latest date of information: 8/1/1965
Controlled from maps and intelligence information available as of 1965
Horizontal Datum: European
Vertical Datum: Mean Sea Level

LOCATION DIAGRAM FOR SB 34-6
(WAC INDEX SHOWN IN BLUE)

SB 34-1	SB 34-2	SB 34-3
SB 34-5	SB 34-6	SB 34-7
SB 34-9	SB 34-10	SB 34-11

GLOSSARY

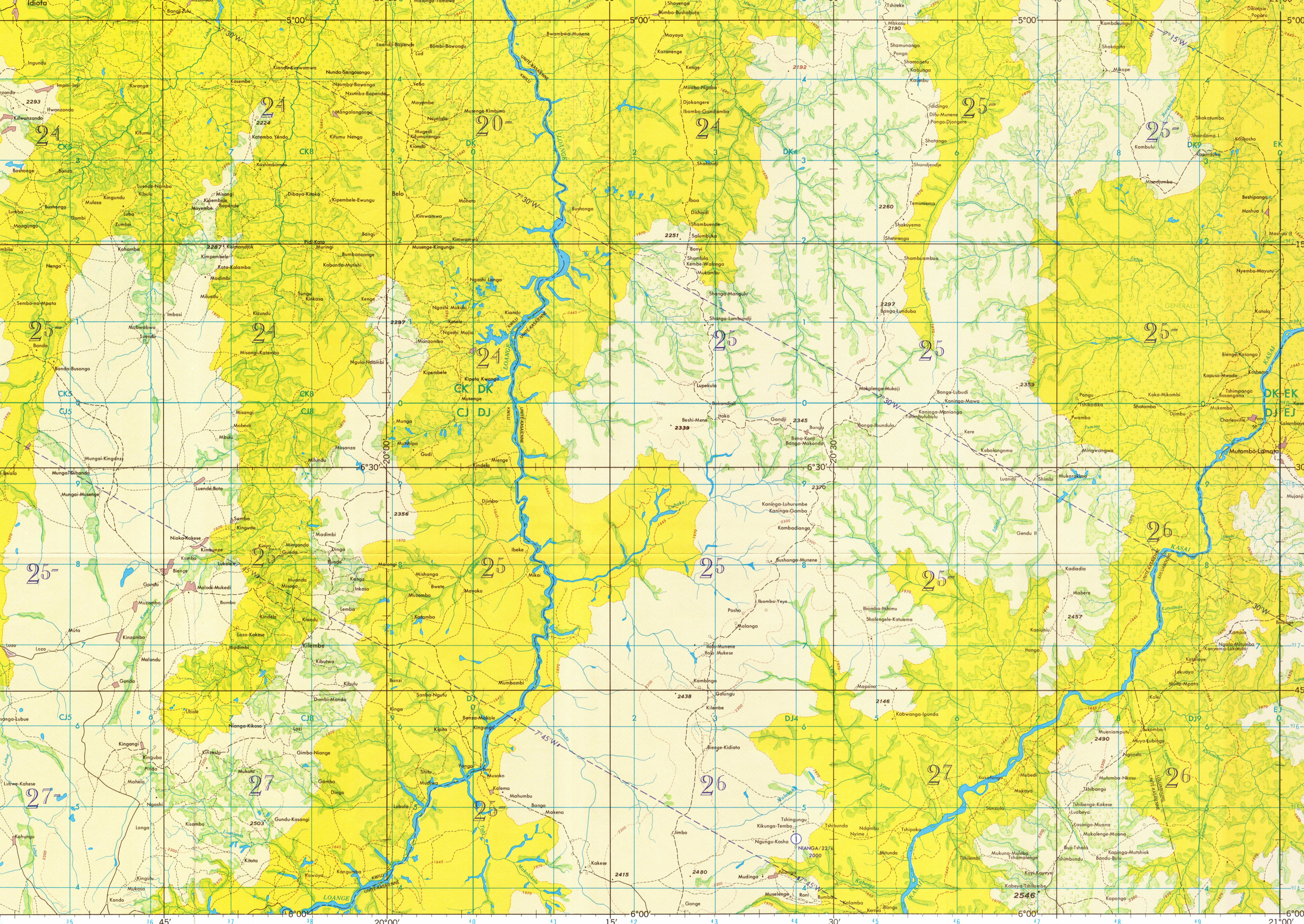
FRENCH	ENGLISH
bai	bay
cap	cape
chenal	channel
chutes	waterfalls
étang	lake, pond
îles	islands
lagga	hill
lacis	lake
marais	marsh
monts	mountains
rapides	rapids



CAUTION
AIR INFORMATION CURRENT THROUGHOUT THIS SHEET IS OBSOLETE
Consult NOTAMS and USAF/USN Flight Information Publications for the latest air information. The Chart Updating Manual for other chart revisions is also available.

LINE OF EQUAL MAGNETIC VARIATION FOR 1965
(Annual rate of change 2' decrease)

1:250,000 - EDITION 1
KILEMBE, CONGO (KINSHASA)
1501A SB 34-6



LIMITED DISTRIBUTION

NO COPY & REPRODUCTION PERMITTED ON THIS SHEET TO NEAREST 1000 METERS

CK	DK	DJ
CJ	DJ	

34M

037188A

34M017188A

ROADS

All weather, hard surface
Two or more lanes wide
One lane wide
All weather, loose or light surface
Two or more lanes wide
One lane wide
Fair or dry weather loose surface, dirt road
Cartpath
Trail (foot path)

National Route
Secondary Route

RAILROADS

Normal gauge 1.067M (3'6")
Narrow gauge

BOUNDARIES

International
State or Provincial (Administrative)

VEGETATION

Woods - Brushwood

JOINT OPERATIONS GRAPHIC (AIR)

Scale 1:250,000

5 0 5 10 15 Statute Miles
5 0 5 10 15 Kilometers
5 0 5 10 15 Nautical Miles

CONTOUR INTERVAL APPROXIMATELY 300 FEET (100 METERS)
ALL CONTOURS ARE APPROXIMATE

TRANSVERSE MERCATOR PROJECTION

BLUE NUMBERED LINES INDICATE THE 10,000 METER UNIVERSAL TRANSVERSE MERCATOR GRID ZONE 34N, CLARK 1860 SPHEROID

THE LAST FOUR DIGITS OF GRID NUMBERS ARE OMITTED

USERS SHOULD REFER TO THE NIMA CUSTOMER HELP DESK: 1-800-455-0000, COMMERCIAL: 214-280-2226, DSN 490-1226, OR WRITE TO: DIRECTOR, NATIONAL IMAGERY AND MAPPING AGENCY, ATTN: CD, 8015 LEE HIGHWAY, FAIRFAX, VA 22031-2137

AERODROMES (Military or Civil)

Field limits with runway pattern
EDNA - Name
50 - length of longest runway to nearest hundreds of feet
s - soft or unimproved surface
725 - Elevation
Field limits, with runway pattern unknown
Field limits unknown, with runway pattern

SEAPLANE BASE
SEAPLANE (EMERGENCY)
HELIPORT

CONTROLLED AIRSPACE

ADIZ

ATLANTIC ADIZ

VISUAL AIDS AND OBSTRUCTIONS

1108
1108 - Elevation of obstruction top, above sea level
(239) - Elevation of obstruction top, above ground level
Group obstruction
Radio facility obstruction
Power transmission line

TERRAIN ELEVATIONS

HIGHEST elevation is 2546 feet located at 5°58'N, 20°44'E
± following elevation value indicates accuracy is not within 150 feet
Horizontal control point

HIGHEST TERRAIN elevations for each 15 MINUTE QUADRANGLE are represented in THOUSANDS and HUNDREDS of feet. They are omitted where relief information is inadequate. A minus sign (-) following the figure indicates that the figure is based on an estimated elevation.

EXAMPLES: 51 81-

NOTES:

No obstructions 200 feet or more above ground level are known to exist within this area.

THE ALIGNMENT OF ADMINISTRATIVE BOUNDARIES IS APPROXIMATE.

THE REPRESENTATION OF INTERNATIONAL BOUNDARIES IS NOT NECESSARILY AUTHORITY.

NSN 7641014096027
NIMA STOCK NO. 1501ASB3406