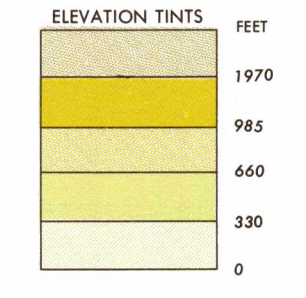
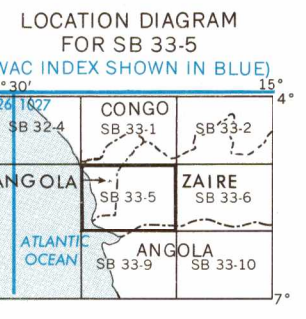


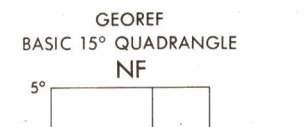
SERIES 1501 AIR SHEET SB 33-5 EDITION 2



RELIABILITY OF THIS MAP (as determined by standard practices) Compiled from best available source materials 1967



GLOSSARY defining various geographical features such as archipelago, bank, coline, etc.

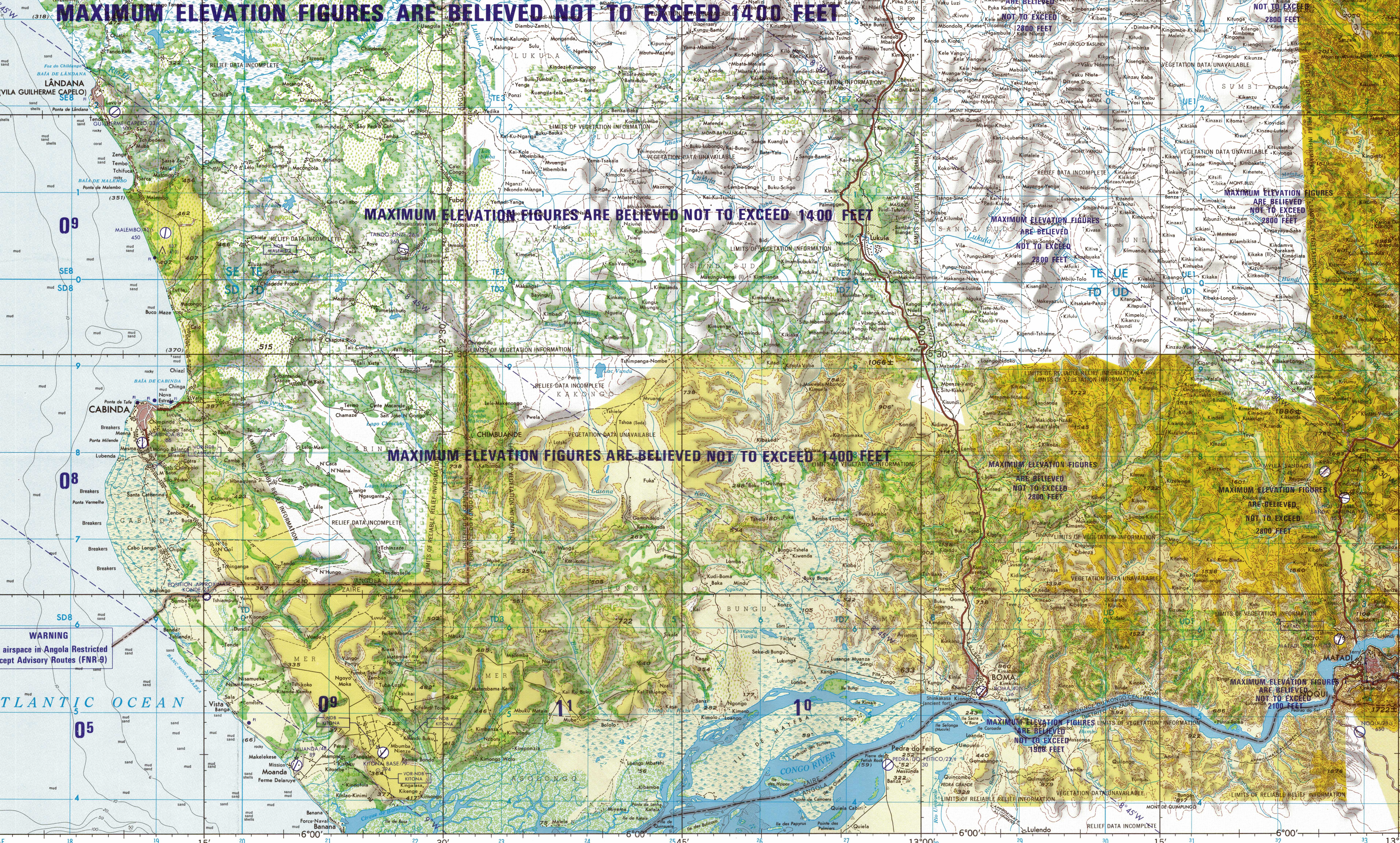


CAUTION AIR INFORMATION CURRENT THROUGH 14 NOVEMBER 1975

LINE OF EQUAL MAGNETIC VARIATION FOR 1975

LIMITED DISTRIBUTION Distribution authorized in South Africa...

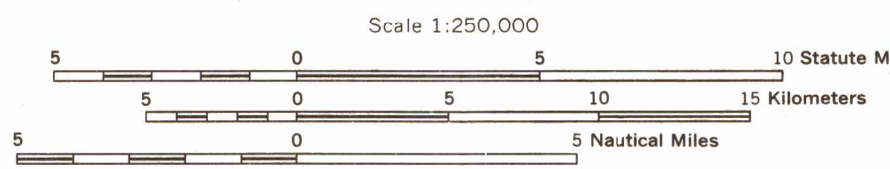
SERIES 1501 AIR SHEET SB 33-5 EDITION 2



WARNING All airspace in Angola Restricted except Advisory Routes (FNR-9)

ELEVATIONS IN FEET DEPTHS IN FATHOMS

JOINT OPERATIONS GRAPHIC (AIR)



ELEVATIONS IN FEET DEPTHS IN FATHOMS

- AERODROMES (Military or Civil) EDNA/50/4 725
Field limits with runway pattern
EDN - Name
50 - Length of longest runway to nearest hundreds of feet
5 - Soft or unimproved surface
725 - Elevation

- CONTROLLED AIRSPACE ATLANTIC ADIZ
ADIZ
VISUAL AIDS AND OBSTRUCTIONS 1108 (259)
OBSTRUCTION 1108 - Elevation of obstruction top, above sea level. (259) - Elevation of obstruction top, above ground level.

ATTENTION THIS CHART CONTAINS MAXIMUM ELEVATION FIGURES (MEF)
The Maximum Elevation Figures shown in quadrangles based on isolated lines of latitude and longitude are represented in 100-FOOT AND HUNDREDS of feet above mean sea level.

NOTES THE REPRESENTATION OF INTERNATIONAL BOUNDARIES IS NOT NECESSARILY AUTHORITY

NSN 7641014101442 ED. NO. 002 NIMA STOCK NO. 1501ASB3305

LEGEND
ROADS All weather Hard surface, two or more lanes wide
RAILROADS Normal gauge 1.067 m. (3 1/2')
BOUNDARIES International Primary administrative

GRID ZONE DESIGNATION: 33M TO GIVE A STANDARD REFERENCE ON THIS SHEET TO METERS (100 METERS)
SAMPLE POINT: FUKA
1. Read letters identifying 100,000 meter squares in which the point lies

TRANSVERSE MERCATOR PROJECTION
USERS SHOULD REFER TO CORRECTIONS, ADDITIONS, AND COMMENTS TO THE NIMA CUSTOMER HELP DESK: 1-800-455-0899