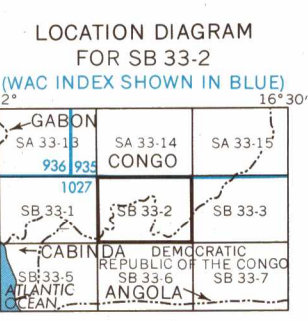
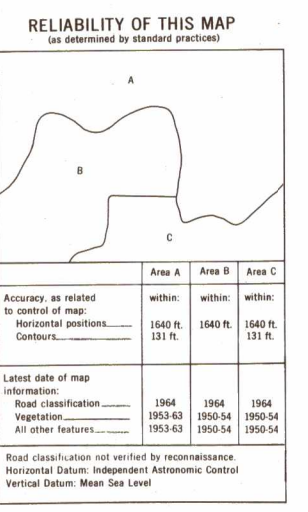
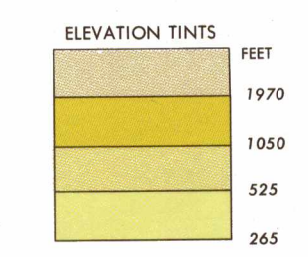
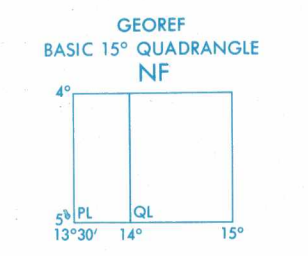


1:250,000 - EDITION 1  
KINKALA, CONGO  
JOG(A) 1501 SB 33-2  
CONGO AND DEMOCRATIC  
REPUBLIC OF THE CONGO



**GLOSSARY**

Chutes	.....	falls
Col	.....	pass, saddle of mountain
Colline	.....	hills
Colonne	.....	column
Forêt	.....	forest
Carre	.....	railroad station
Lac	.....	lake
Mont, Monts	.....	mount, mountain
Pic	.....	mountain peak
Plan	.....	mountain plain



**CAUTION**  
AIR INFORMATION CURRENT THROUGHOUT  
5 APRIL 1967  
Consult NOTAMS and USAF/AFM Flight Information Publications for the latest air information. The Chart Updating Manual for other aviation information.

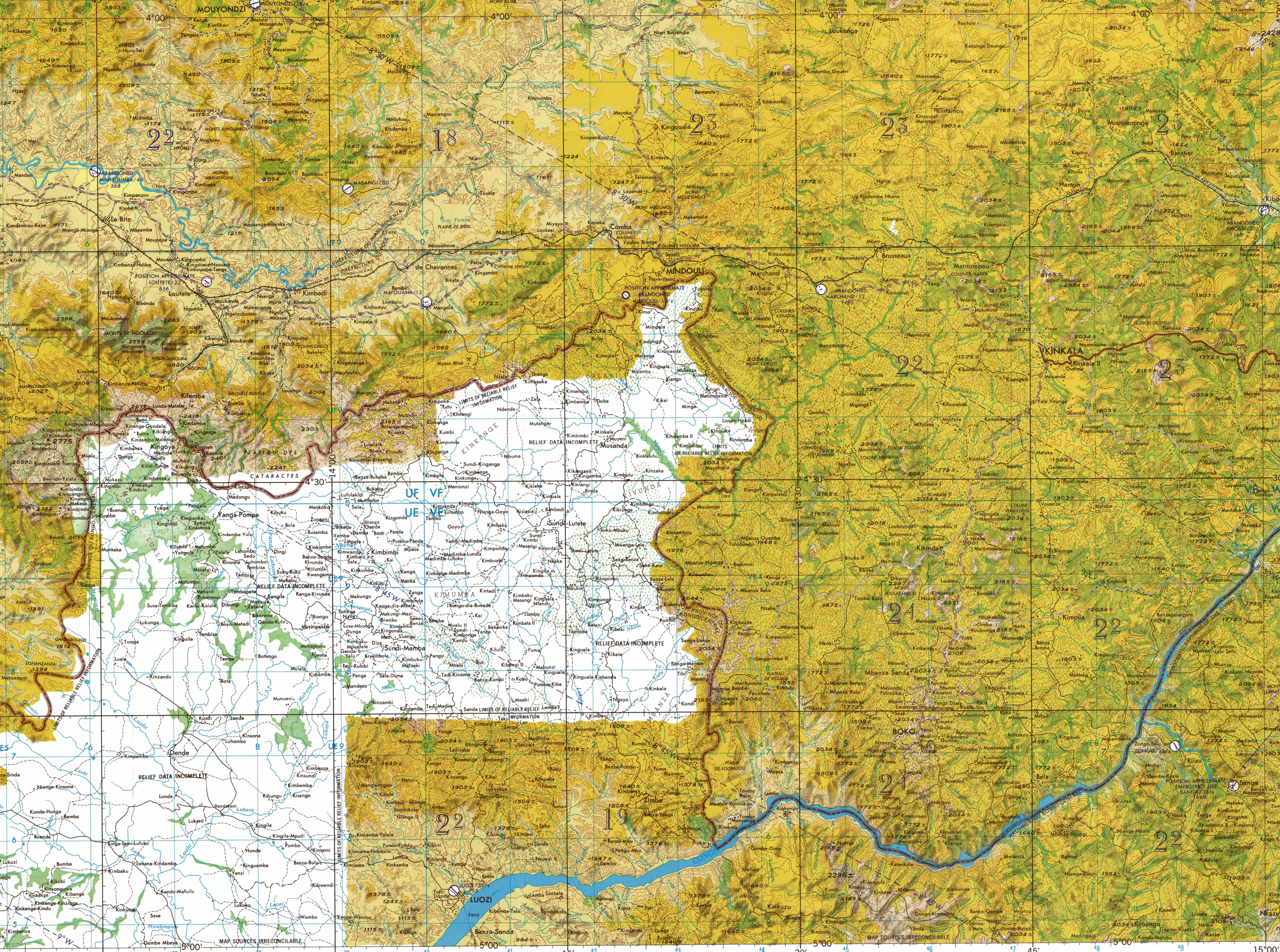
**LINES OF EQUAL MAGNETIC VARIATION FOR 1965**  
(Annual rate of change 3' decrease)

Prepared under the direction of the Defense Intelligence Agency and published by Army Map Service, Washington, D.C., 20315. Compiled in 1966 from best available source materials.

**AERONAUTICAL APPROACH CHARTS (Code: AC) and/or AERONAUTICAL CHARTS (Code: ACI) completely within the area of this graphic are discontinued. Those that are partially within the area of this graphic should be retained until publication of the adjacent Joint Operations Graphic (Code: JOG). Consult the ACIC Bulletin for publication and discontinuance notices.**

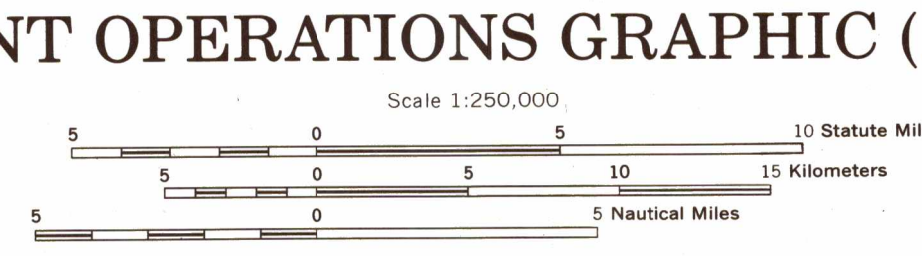
**LIMITED DISTRIBUTION**  
Distribution authorized to DoD, IAW 15 U.S.C. SEC. 135 & 135a. Release authorized to U.S. Civilian, IAW 15 U.S.C. SEC. 135 & 135a. Distribution to other agencies is limited to those agencies listed in the Distribution Statement. Do not disseminate to the public. If this notice is published, it is to be removed.

1:250,000 - EDITION 1  
KINKALA, CONGO  
JOG (A) 1501 SB 33-2



**LEGEND**

<b>ROADS</b>	All weather Hard surface, two or more lanes wide Loose or light surface, two or more lanes wide Hard surface, one lane wide Loose or light surface, one lane wide Fair or dry weather, loose surface Cart track, Footpath, trail	
<b>RAILROADS</b>	Normal gauge 1 m (3'3 3/4") Narrow gauge	
<b>BOUNDARIES</b>	International Primary administrative Reservation Woods/bushwood Scattered trees, low growth Orchard, plantation, vineyard Rice	



TRANSVERSE MERCATOR PROJECTION

BLUE NUMBERED LINES INDICATE THE 10,000 METER UNIVERSAL TRANSVERSE MERCATOR GRID ZONE 33, CLARKE 1880 SPHEROID

USERS SHOULD REFER TO CORRECTIONS, ADDITIONS, AND COMMENTS TO THE NIMA CUSTOMER HELP DESK: 1-800-455-0889, COMMERCIAL 1-314-261-1238, DSN 442-1238, OR WRITE TO: DIRECTOR, NATIONAL MAGNETY AND MAPPING AGENCY, ATTN: CD, 8033 LEE HIGHWAY, FAIRFAX, VA 22031-2301

**AERODROMES (Military or Civil)**

EDNA - Name	.....	EDNA/50's	725
50 - Length of longest runway to nearest hundreds of feet	.....		
S - Soft or unimproved surface	.....		
725 - Elevation	.....		
Field limits, with runway pattern	.....		
Field limits unknown, with runway pattern	.....		
Field limits and runway pattern unknown	.....		
SEAPLANE BASE	.....		
SEAPLANE (EMERGENCY)	.....		
HELIPORT	.....		
RADIO FACILITIES	.....	ENG. (HUN)	
RADIO RANGE LF/MF	.....	R-B-D-R-NG	
MULTIPLE RADIO FACILITIES	.....	PARIS	

**CONTROLLED AIRSPACE**

**ATLANTIC ADIZ**

**VISUAL AIDS AND OBSTRUCTIONS**

1108	.....	1108
(259)	.....	(259)
OBSTRUCTION	.....	1108
1108 - Elevation of obstruction top, above sea level	.....	
(259) - Elevation of obstruction top, above ground level	.....	
Group obstruction	.....	
Radio facility obstruction	.....	
Power transmission line	.....	
Ocean station vessel (Normal position)	.....	
Visual ground sign	.....	M
Aero light, Marine light	.....	*

**TERRAIN ELEVATIONS**

HIGHEST ELEVATION **UNKNOWN**

± following elevation value indicates accuracy is not within 67 feet.

HIGHEST TERRAIN elevations for each 15 minute quadrangle are represented in thousands and hundreds of feet. They are omitted where relief information is inadequate. A minus sign (-) following the figure indicates that the figure is based on an estimated elevation.

**EXAMPLES:**  
51 81-

**NOTES**  
No obstruction 200 feet or more above the ground level are known to exist within this area.

THE REPRESENTATION OF INTERNATIONAL BOUNDARIES IS NOT NECESSARILY AUTHENTICATIVE.

Printed by NIMA 7-97

NSN 7641014096051  
NIMA REF. NO. 1501ASB3302