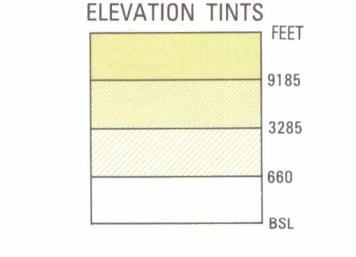


SERIES 1501 AIR SHEET SB 18-13 EDITION 1

NO COMPANION SHEET EXISTS



RELIABILITY OF THIS GRAPHIC (as determined by standard practices)

Table with columns for years (1982, 1994, 1996) and reliability indicators.

PLOTTING ACCURACY 80% ASSURANCE

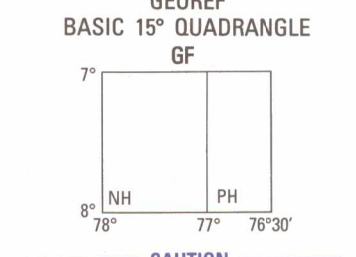
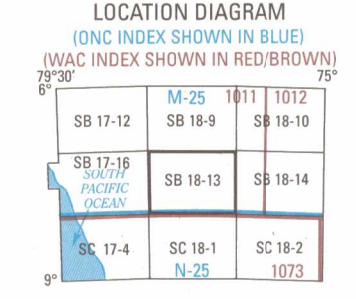
Horizontal Accuracy: within 820 ft. Contours: within 660 ft.

GRAPHIC FEATURE DATE OF INFORMATION

GLOSSARY table listing symbols for Carretera, Cerros, Datos insuficientes, Departamento, etc.

CONVERSION OF ELEVATIONS table showing Feet, Meters, and Feet to Meters conversions.

CAUTION Vertical obstructions, including powerlines, have been omitted from this chart.

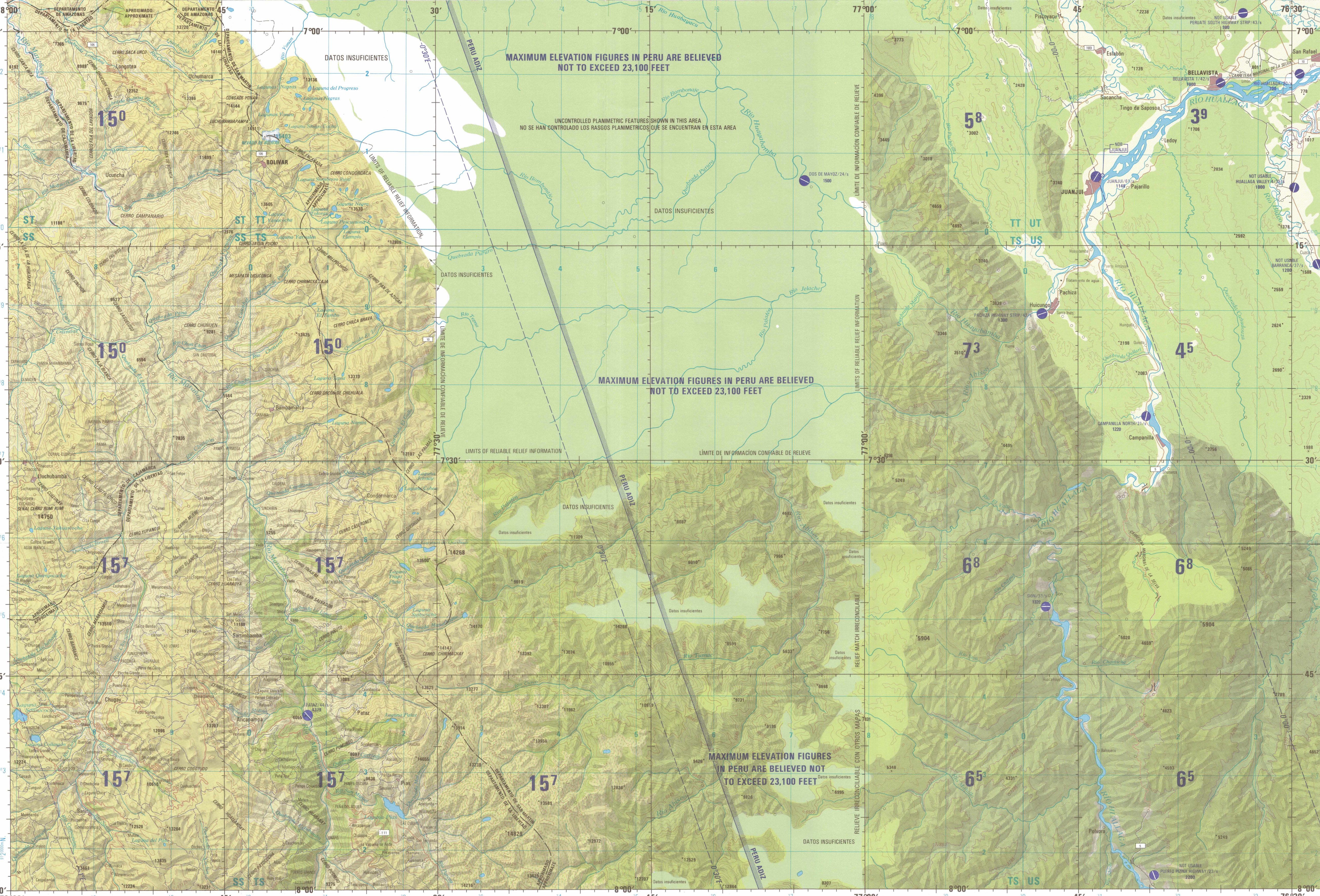


CAUTION AIR INFORMATION CURRENT THROUGH 21 MAR 1997

LINE OF EQUAL MAGNETIC VARIATION FOR 1995

LINEAS DE IGUAL VARIACION MAGNETICA PARA 1995

1:250,000 JUANJUI, PERU. SERIES 1501 AIR SHEET SB 18-13 EDITION 1. NO COMPANION SHEET EXISTS.



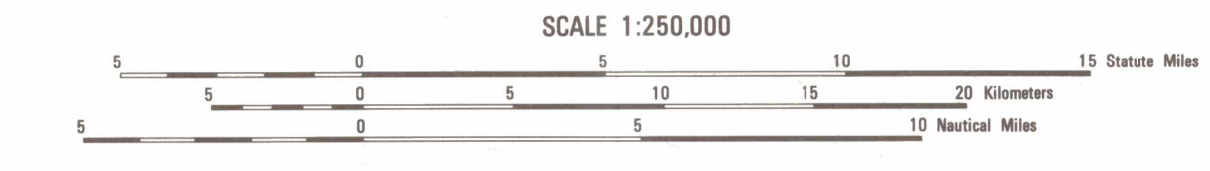
Prepared and published by the National Imagery and Mapping Agency, Compiled March 1996.

COORDINATE CONVERSION WGS 84 TO PSAD 56

Table with columns for 'SAMPLE 10,000 METER GRID SQUARE' and 'SAMPLE 1,000 METER REFERENCES'.

ROADS-CAMINOS, RAILROADS-FERROCARRILES, BOUNDARIES-LIMITES, VEGETATION-VEGETACION. Legend for various symbols and line styles.

ELEVATIONS IN FEET ELEVACIONES EN PIES



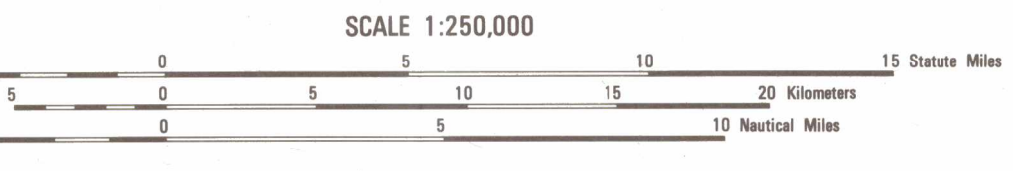
CONTOUR INTERVAL APPROXIMATELY 660 FEET EQUIDISTANCIA APROXIMADA DE LAS CURVAS DE NIVEL 660 PIES

BLUE NUMBERED LINES INDICATE THE 1000 METER UNIVERSAL TRANSVERSE MERCATOR GRID...

USERS SHOULD REFER TO CORRECTIONS, ADDITIONS, AND COMMENTS TO THE NIMA OPERATIONAL HELP...

© COPYRIGHT 1997 BY THE UNITED STATES GOVERNMENT. © EL GOBIERNO DE LOS ESTADOS UNIDOS, 1997.

JOINT OPERATIONS GRAPHIC (AIR)



CONTOUR INTERVAL APPROXIMATELY 660 FEET EQUIDISTANCIA APROXIMADA DE LAS CURVAS DE NIVEL 660 PIES

BLUE NUMBERED LINES INDICATE THE 1000 METER UNIVERSAL TRANSVERSE MERCATOR GRID...

USERS SHOULD REFER TO CORRECTIONS, ADDITIONS, AND COMMENTS TO THE NIMA OPERATIONAL HELP...

© COPYRIGHT 1997 BY THE UNITED STATES GOVERNMENT. © EL GOBIERNO DE LOS ESTADOS UNIDOS, 1997.

OTHER FEATURES-OTROS RASGOS

Legend for symbols representing School, Church, Cemetery, Ruins, etc.

ELEVATIONS IN FEET ELEVACIONES EN PIES

Legend for symbols representing Aerodromes, EDNA/50's, and other elevation-related features.

ATTENTION THIS CHART CONTAINS MAXIMUM ELEVATION FIGURES (MEF)

Attention box with text explaining MEF and a large '125' example value.

NOTES - NOTAS

Powerlines are shown except within populated place tints. Other obstructions are shown if they are 200 feet or more above ground level.