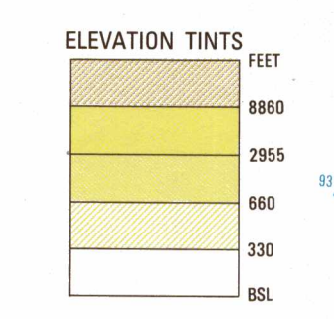


SERIES 1501 AIR SHEET SB 17-12 EDITION 1



RELIABILITY OF THIS GRAPHIC (as determined by standard practices)



PLOTTING ACCURACY 90% ASSURANCE

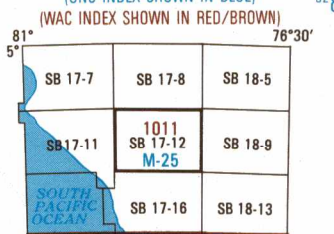
GRAPHIC FEATURE DATE OF INFORMATION

Horizontal Datum: World Geodetic System Vertical Datum: Mean Sea Level Transverse Mercator Projection

GLOSSARY

- Acequia: irrigation canal
Cerro(s), Cds: mountains, spur
Departamento: first-order administrative division
Hacienda, Hda: estate, populated place
Laguna, Lag: lake
Loma(s): mountain(s)
Mina(s): mine
Pampa: plain, slope
Quebrada, Q: intermittent stream, stream
Reservorio: reservoir
Rio: stream
Señal CAL: triangulation station
Telefónica, Tel: telephone

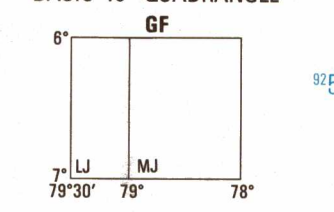
LOCATION DIAGRAM



CONVERSION OF ELEVATIONS

Table with columns for feet and meters, showing conversion values for various elevation points.

GEOREF



CAUTION

AIR INFORMATION CURRENT THROUGH 22 JANUARY 1997

CAUTION

Vertical obstructions, including powerlines, have been extracted from the most reliable sources available. However, there is no assurance that all are shown, or that their location or height are exact.

ATTENTION

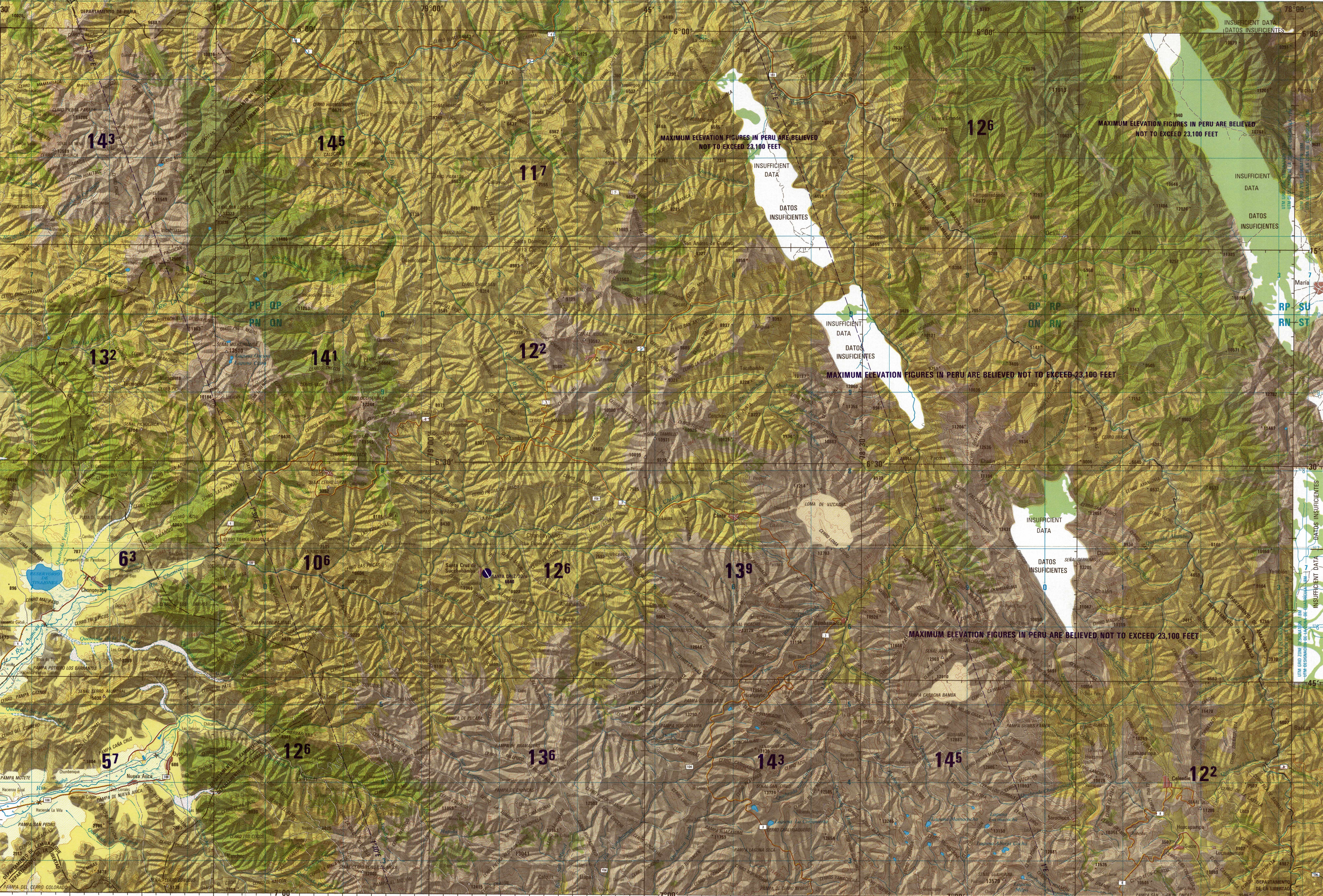
THIS CHART CONTAINS MAXIMUM ELEVATION FIGURES (MEF) The Maximum Elevation Figures show in quadrangles bounded by dotted lines of latitude and longitude are represented in THOUSANDS and HUNDREDS of feet above mean sea level.

LIMITED DISTRIBUTION:

Distribution authorized to DoD, IAW 10 U.S.C. 11330 and 4515. Release authorized to US DoD contractors IAW 48 C.F.R. 1.252-245-7000. Refer other requests to Headquarters, NIMA, ATTN: Release Officer, Stop P-25. Distribute as 'For Official Use Only.' Removal of this caveat is prohibited.

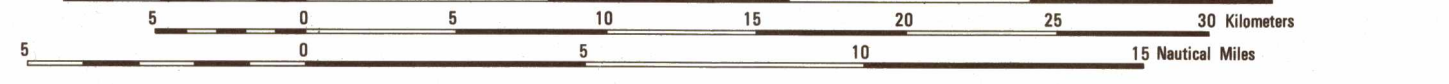
SCALE: 1:250,000

CHOTA, PERU SERIES 1501 AIR SHEET SB 17-12 EDITION 1



JOINT OPERATIONS GRAPHIC (AIR)

SCALE 1:250,000



CONTOUR INTERVAL APPROXIMATELY 330 FEET EQUIDISTANCIA APROXIMADA DE LAS CURVAS DE NIVEL 330 PIES

BLUE NUMBERED LINES INDICATE THE 10,000 METER UNIVERSAL TRANSVERSE MERCATOR GRID, ZONE 17, WORLD GEODETIC SYSTEM ELLIPSOID.

USERS SHOULD REFER CORRECTIONS, ADDITIONS, AND COMMENTS TO THE NIMA CUSTOMER HELP DESK: 1-800-455-0899, COMMERCIAL: 1-314-200-1236, DSN: 480-1236, OR WRITE TO: DIRECTOR, NATIONAL IMAGERY AND MAPPING AGENCY, ATTN: CO, 8613 LEE HIGHWAY, FAIRFAX, VA 22031-2137. SE SOLICITA A LOS LECTORES QUE TENGAN CORRECCIONES, ADICIONES Y COMENTARIOS, DIRIGIRSE AL CENTRO DE ASISTENCIA NIMA: 1-800-455-0899, NUMERO COMERCIAL: 1-314-200-1236, DSN: 480-1236, O ESCRIBIR A: DIRECTOR, NATIONAL IMAGERY AND MAPPING AGENCY, ATTN: CO, 8613 LEE HIGHWAY, FAIRFAX, VA 22031-2137.

© COPYRIGHT 1997 BY THE UNITED STATES GOVERNMENT. NO COPYRIGHT CLAIMED UNDER TITLE 17 U.S.C. © EL GOBIERNO DE LOS ESTADOS UNIDOS, 1997. NO SE RECLAMAN DERECHOS DE AUTOR NI DEL TITULO 17 U.S.C. (TITULO DE LOS ESTADOS UNIDOS).

COORDINATE CONVERSION WGS TO PSAD 56. Includes tables for grid square conversion and examples.

ROADS-CAMINOS. Legend for road types including 4 lanes, 2 lanes, and narrow gauge.

RAILROADS-FERROCARRILES. Legend for single track and multiple track.

BOUNDARIES-LIMITES. Legend for international, first-order administrative, and second-order administrative boundaries.

VEGETATION-VEGETACION. Legend for woods and bosque.

AERODROMES (Military or Civil). Legend for runway patterns and surfaces.

CONTROLLED AIRSPACE. Legend for various airspace types.

HYDROGRAPHY-HIDROGRAFIA. Legend for streams and sand areas.

VISUAL AIDS AND OBSTRUCTIONS. Legend for obstruction types and heights.

TERRAIN ELEVATIONS-ELEVACIONES DEL TERRENO. Legend for spot elevations and highest elevations.

NSN 7641014337316 NIMA STOCK NO. 1501ASB1712