

SERIES 1501 AIR SHEET SB 17-8 EDITION 1

GEOREF BASIC 15° QUADRANGLE GF LOCATION DIAGRAM (ONC INDEX SHOWN IN BLUE) (WVC INDEX SHOWN IN RED BROWN) CONVERSION GRAPH GRÁFICO DE CONVERSIÓN

TERRAIN ELEVATIONS ELEVACIONES DEL TERRENO Spot elevation: Normal, Critical Punto acotado: Normal, Crítico Highest elevation is UNKNOWN DESCONOCIDA

AERODROMES (Military or Civil) AERODROMES (Militares o civiles) CONTROLLED AIRSPACE ESPACIO AEREO CONTROLADO VISUAL AIDS AND OBSTRUCTIONS OBSTACULOS Y AYUDAS VISUALES

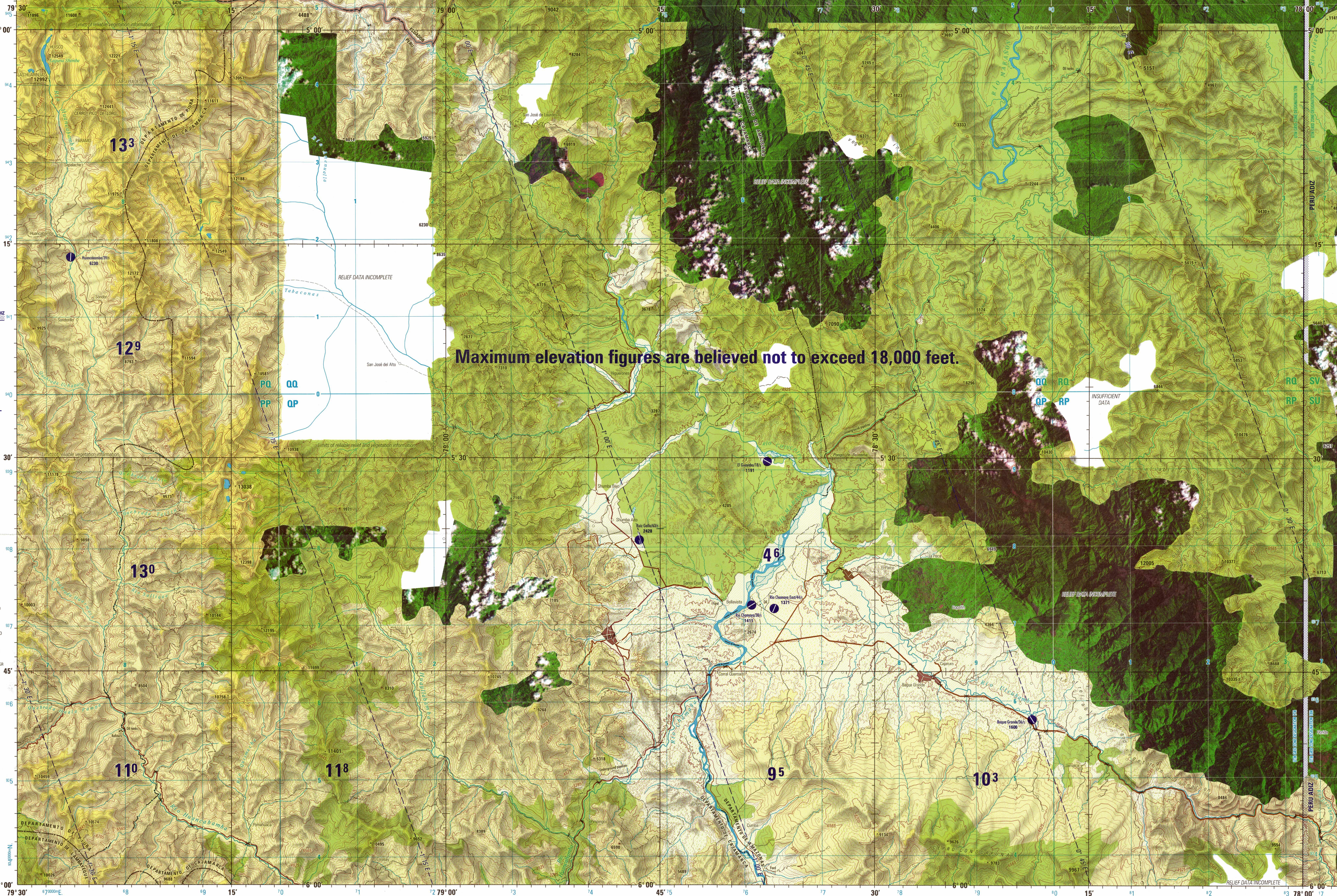
RADIO FACILITIES INSTALACIONES DE RADIO LANDSAT THEMATIC MAPPER (TM) ACQUISITION DATE PATH / ROW DIRECTION OF SOLAR ILLUMINATION

PHOTOGRAPHIC LEGEND LEGENDA FOTOGRÁFICA URBAN AREAS ZONAS URBANAS GRASSLAND AND AGRICULTURAL AREAS HERBAZALES Y ZONAS AGRICOLAS FORESTED AREAS ZONAS ARBOLADAS

NOTES OBSERVACIONES BAND WAVE LENGTH MAP COLOR BANDA LONGITUD DE ONDA COLOR CARTOGRAFICO

CAUTION AIR INFORMATION CURRENT THROUGH FEBRUARY 1995

ATTENTION THIS CHART CONTAINS MAXIMUM ELEVATION FIGURES (MEF) SCALE 1:250,000 JAÉN PERU SERIES 1501 AIR SHEET SB 17-8 EDITION 1



Maximum elevation figures are believed not to exceed 18,000 feet.

Prepared and published by the Defense Mapping Agency Aerospace Center, St. Louis, Missouri. Compiled February 1995.

MAP INFORMATION AS OF 1991. INFORMACION CARTOGRAFICA HASTA 1991.

ELEVATIONS IN FEET ELEVACIONES EN PIES COORDINATE CONVERSION WGS 84 TO PS 56 CONVERSION DE COORDENADAS DEL SISTEMA GEODESICO MUNDIAL (WGS 84) AL SISTEMA DE DATUM PS 56

JOINT OPERATIONS GRAPHIC (AIR) SCALE 1:250,000 POPULATED PLACES - LUGARES POPULADOS RAILROADS - FERROCARRILES

ROADS - CAMINOS CULTURAL FEATURES - ACCIDENTES CULTURALES VEGETATION - VEGETACION HYDROGRAPHY - DRENAJE BOUNDARIES - LIMITES

DMR STOCK NO. 1501ASB1708 ED. NO. 1 NUMERO DE SURTIDO DMR NUMERO DE EDICION 001