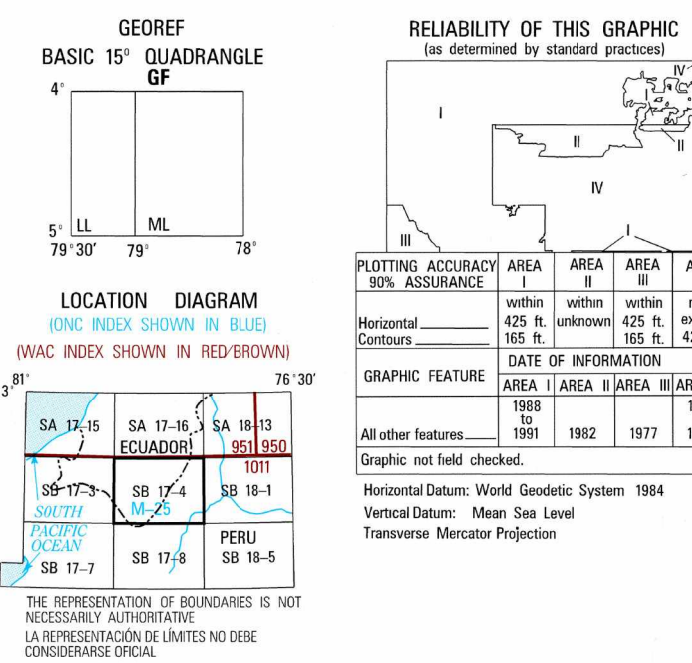


SERIES 1501 AIR SHEET SB 17-4 EDITION 2

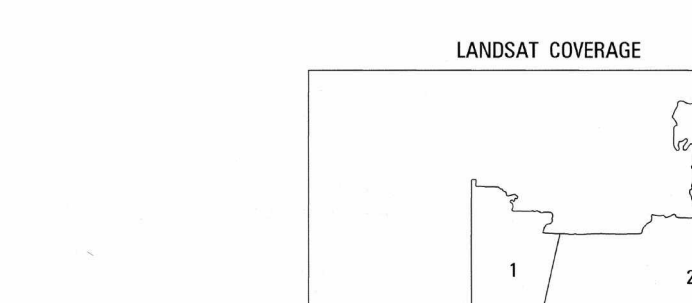


TERRAIN ELEVATIONS ELEVACIONES DEL TERRENO
Spot elevation: Normal, Critical
Highest known elevation is UNKNOWN

AERODROMES (Military or Civil)
Runway pattern known
Name / length / surface

VISUAL AIDS AND OBSTRUCTIONS
Obstruction
Radio facility obstruction

RADIO FACILITIES
INSTALLACIONES DE RADIO
TACAN VOR / DME
RADIO RANGE LF / MF



PHOTOGRAPHIC LEGEND
URBAN AREAS
GRASSLAND AND AGRICULTURAL AREAS

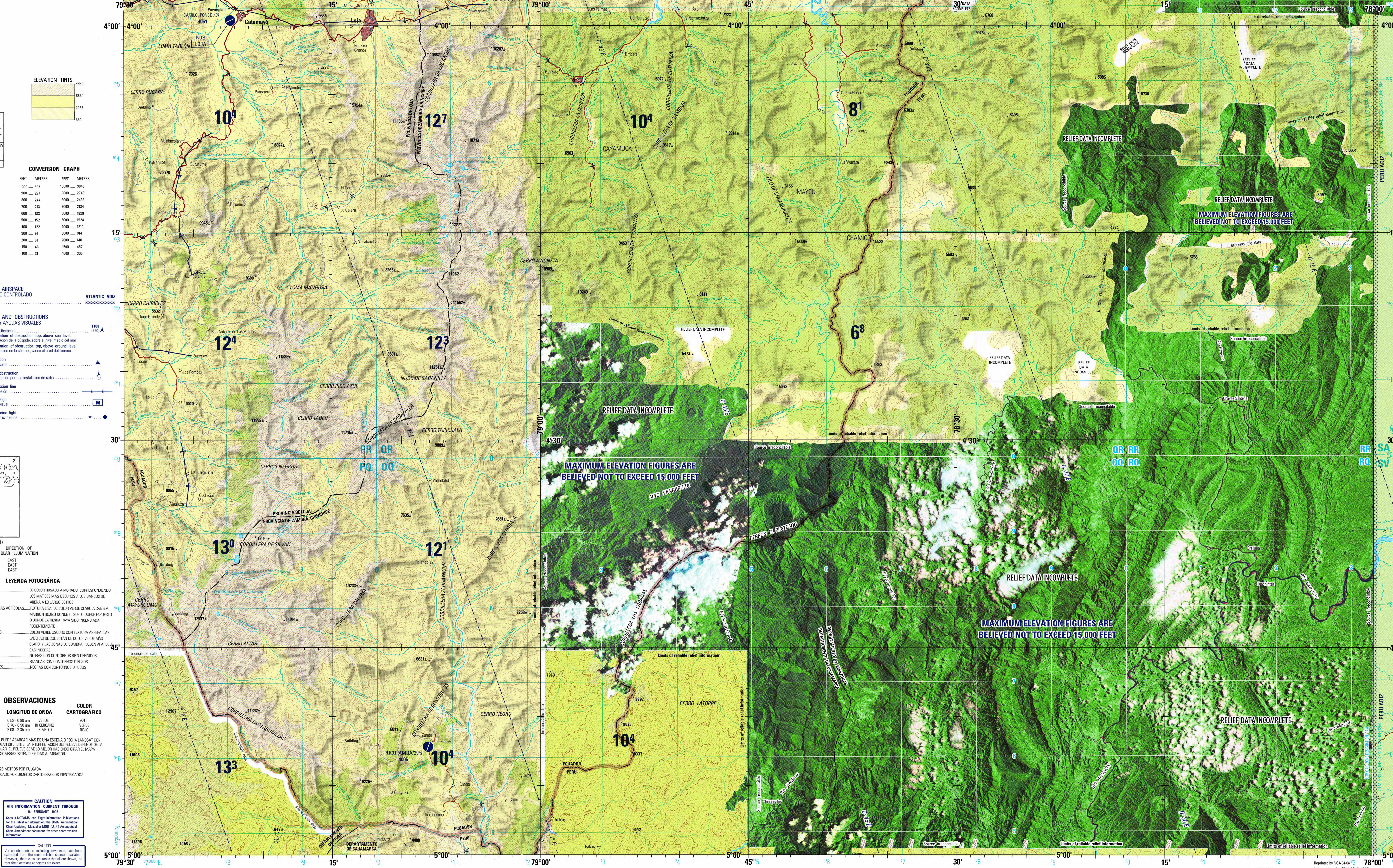
LEYENDA FOTOGRAFICA
ZONAS URBANAS
HERBAZALES Y ZONAS AGRICOLAS

NOTES
THIS PHOTOMAP MAY BE COMPOSED OF MORE THAN ONE LANDSAT SCENE

OBSERVACIONES
BANDA
LONGITUD DE ONDA
COLOR CARTOGRAFICO

ATTENTION
THIS CHART CONTAINS MAXIMUM ELEVATION FIGURES (MEF)

SCALE 1:250,000
ZAMORA, ECUADOR; PERU
SERIES 1501 AIR SHEET SB 17-4 EDITION 2



Prepared and published by the Defense Mapping Agency Aerospace Center, St. Louis, Missouri.
MAP INFORMATION AS OF 1990.

ELEVATIONS IN FEET ELEVACIONES EN PIES
COORDINATE CONVERSION WGS 84 TO IGA 84
CONVERSION DE COORDENADAS DEL SISTEMA GEODESICO MONDIAL WGS 84 AL SISTEMA DE DATOS PSA 84

JOINT OPERATIONS GRAPHIC (AIR)
SCALE 1:250,000
CONTOUR INTERVAL APPROXIMATELY 330 FEET
EQUIDISTANCIA APROXIMADA DE LAS CURVAS DE NIVEL 330 PIES

POPULATED PLACES LUGARES POPULADOS
ROADS CAMINOS
RAILROADS FERROCARRILES
BARRIERS BARRERAS
BOUNDARIES LIMITES

NOTES
No obstructions 200 feet or more above ground level are known to exist in this area
En esta zona no se conocen obstrucciones de 200 pies (61 m) o más de altura sobre el nivel del terreno

