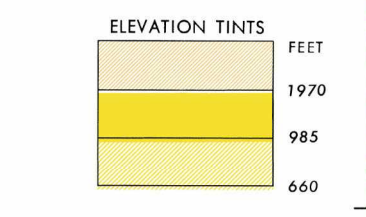


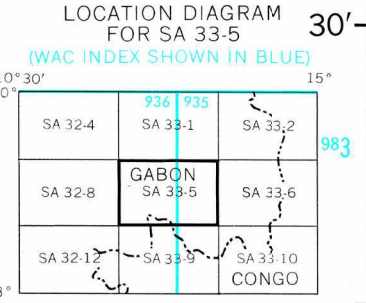
SERIES 1501 AIR SHEET SA 33-5 EDITION 1
COMPANION SERIES 1501 SHEET IS EDITION 1



RELIABILITY OF THIS MAP

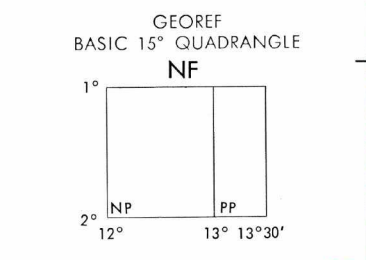
Area A	Area B
Accuracy, as related to control of map:	in excess of
Horizontal positions:	430 ft. 1543 ft.
Vertical positions:	65 ft. 265 ft.
Date of map information:	
Road classification:	1954-61 1941-61
Vegetation:	1954 1941-61
All other features:	1954-61 1941-61

Road classification not verified by reconnaissance.
Horizontal Datum: Independent Astronomic Control.
Vertical Datum: Mean Sea Level.



GLOSSARY

Mayo	stream
Mine d'or	gold mine
Mont(s)	mountain(s)
Montagne	mountain
Plateau	plateau
Prefecture	primary administrative division
Rapides	rapids
Region	primary administrative division



CAUTION
AIR INFORMATION CURRENT THROUGH 13 DECEMBER 1967
Consult Notices to Airmen (NOTAMS) and Flight Information Publications (FIPs) for the latest air information, the Chart Updating Manual (CHUM) for other chart revision information.

LINE OF EQUAL MAGNETIC VARIATION FOR 1965
(Annual rate of change 4' decrease)



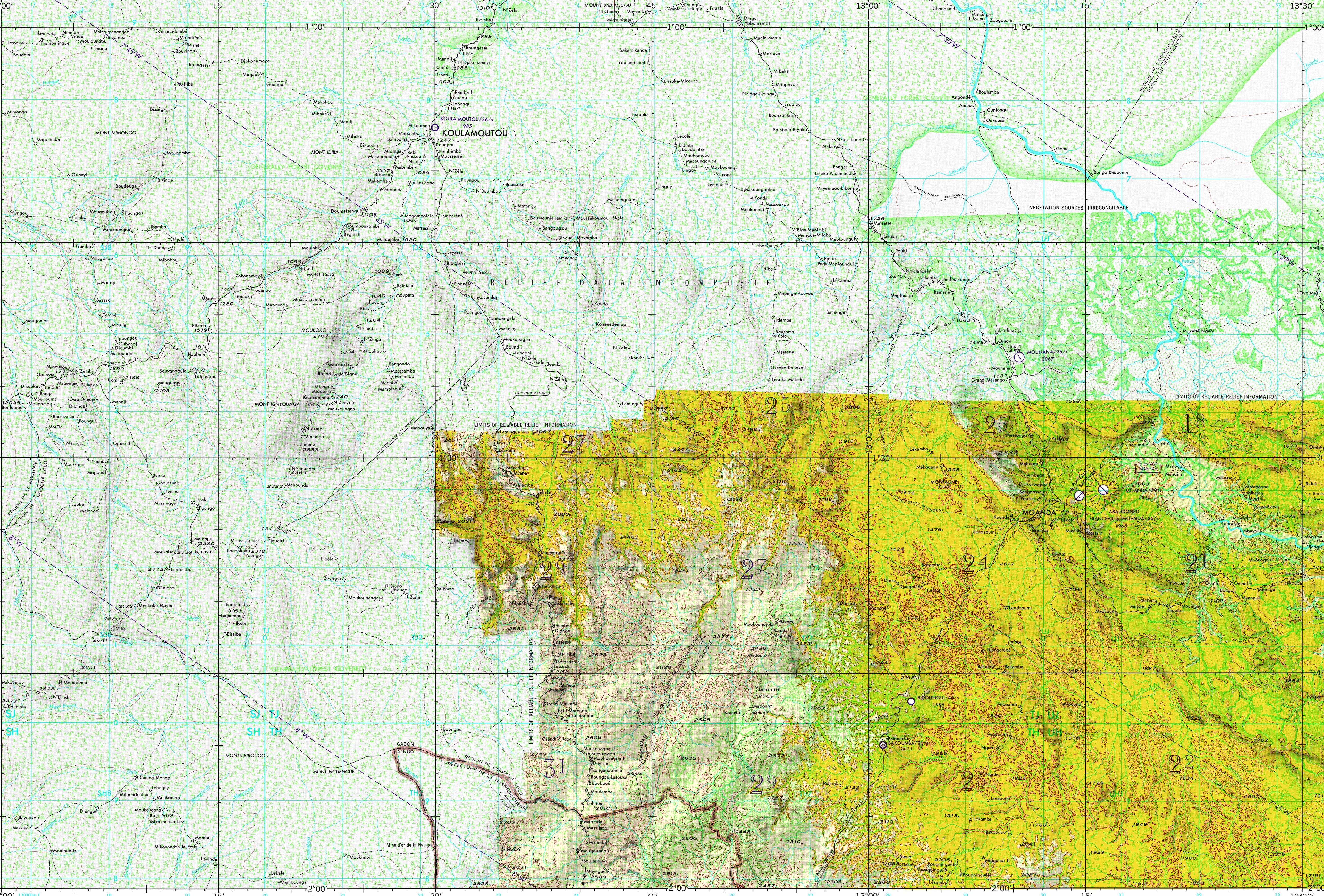
Prepared under the direction of the Defense Intelligence Agency and published by Army Map Service, Corps of Engineers, U.S. Army, Washington, D.C. Compiled in 1966 from best available source materials.

AERONAUTICAL APPROACH CHARTS (Code: AC) and/or AERONAUTICAL CHARTS (Code: AGC) completely within this area are discontinued. Those that are partially within this area should be retained until publication of the adjacent Joint Operations Graphic (AIG). 1501 AIR. Consult the DOD Bulletin for publication and discontinuance notices.

SI	TJ	UJ
SH	TH	UH

SCALE 1:250,000
KOULAMOUTOU, GABON

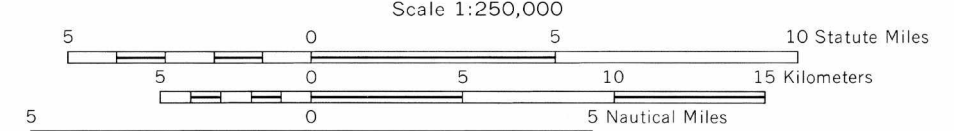
SERIES 1501 AIR SHEET SA 33-5 EDITION 1
COMPANION SERIES 1501 SHEET IS EDITION 1



ELEVATIONS IN FEET
LEGEND

ROADS	All weather, hard surface	12 LANE
	Two or more lanes wide	
	All weather, loose or light surface	PLANES
	Two or more lanes wide	
	All weather, hard surface	
	One lane wide	
	All weather, loose or light surface	
	One lane wide	
	Fair or dry weather, loose surface, dirt road	
	Cart track	
	Footpath, trail	
RAILROADS	Normal gauge	Single track
	Narrow gauge	Multiple track
	Station	
BOUNDARIES	International	
	Primary administrative	
	Secondary administrative	
VEGETATION	Scattered trees	
	Orchard, plantation, vineyard	
	Rice paddy	

JOINT OPERATIONS GRAPHIC (AIR)



CONTOUR INTERVAL APPROXIMATELY 330 FEET WITH SUPPLEMENTARY CONTOURS AT APPROXIMATELY 165 FEET
RELIEF PARTIALLY SHOWN BY FORM LINES

TRANSVERSE MERCATOR PROJECTION

BLUE NUMBERED LINES INDICATE THE 10000 METER UNIVERSAL TRANSVERSE MERCATOR GRID. ZONE 33, CLARKE 1880 SPHEROID
USERS SHOULD MAKE CORRECTIONS, ADDITIONS, AND COMMENTS TO THE IMA OPERATIONAL HELP DESK: 1-800-455-0099. COMMERCIAL: 214-262-4884. DOD-604-004-004
OR WRITE TO DIRECTOR, NATIONAL IMAGERY AND MAPPING AGENCY, ATTN: IS. MAIL STOP - 48, 4800 SANDHAM ROAD, BETHESDA, MD 20815-0048

ELEVATIONS IN FEET

AERODROMES (Military or Civil)	EDNA/50/5	725
Field limits with runway pattern		
EDNA-Name	50--Length of longest runway to nearest hundreds of feet	
	1--Soft or unimproved surface	
	725--Elevation	
Field limits, with runway pattern unknown		
Field limits, unknown, with runway pattern		
Field limits and runway pattern unknown		
SEAPLANE BASE		
SEAPLANE (EMERGENCY)		
HELIPORT		
RADIO FACILITIES		
RADIO RANGE LF/MF		
MULTIPLE RADIO FACILITIES		

CONTROLLED AIRSPACE

ADIZ	ATLANTIC ADIZ
VISUAL AIDS AND OBSTRUCTIONS	
Obstruction	1108 (259) A
	1108--Elevation of obstruction top, above sea level.
	(259)--Elevation of obstruction top, above ground level.
Group obstruction	M
Radio facility obstruction	
Power transmission line	T
Ocean station vessel (Normal position)	
Visual ground sign	
Aero light, Marine light	*
TERRAIN ELEVATIONS	
Highest elevation is UNKNOWN	
± following elevation value indicates accuracy is not within 165 feet.	
Spot elevation: Normal, Critical	406 2641

HIGHEST TERRAIN elevations for each 15 MINUTE QUADRANGLE are represented in THOUSANDS and HUNDREDS of feet. They are omitted where relief information is inadequate. A minus sign (=) following the figure indicates that the figure is based on an estimated elevation.

EXAMPLES
51 81-

NOTES
No obstructions 200 feet or more above ground level are known to exist within this area.
THE REPRESENTATION OF INTERNATIONAL BOUNDARIES IS NOT NECESSARILY AUTHORITY.