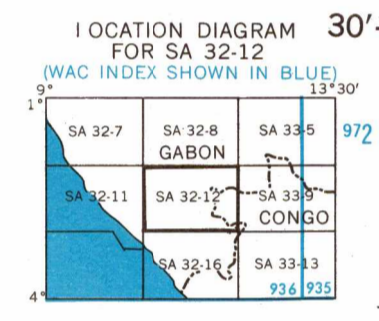
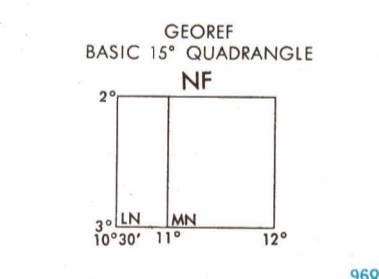


SERIES 1501 AIR SHEET SA 32-12 EDITION 1

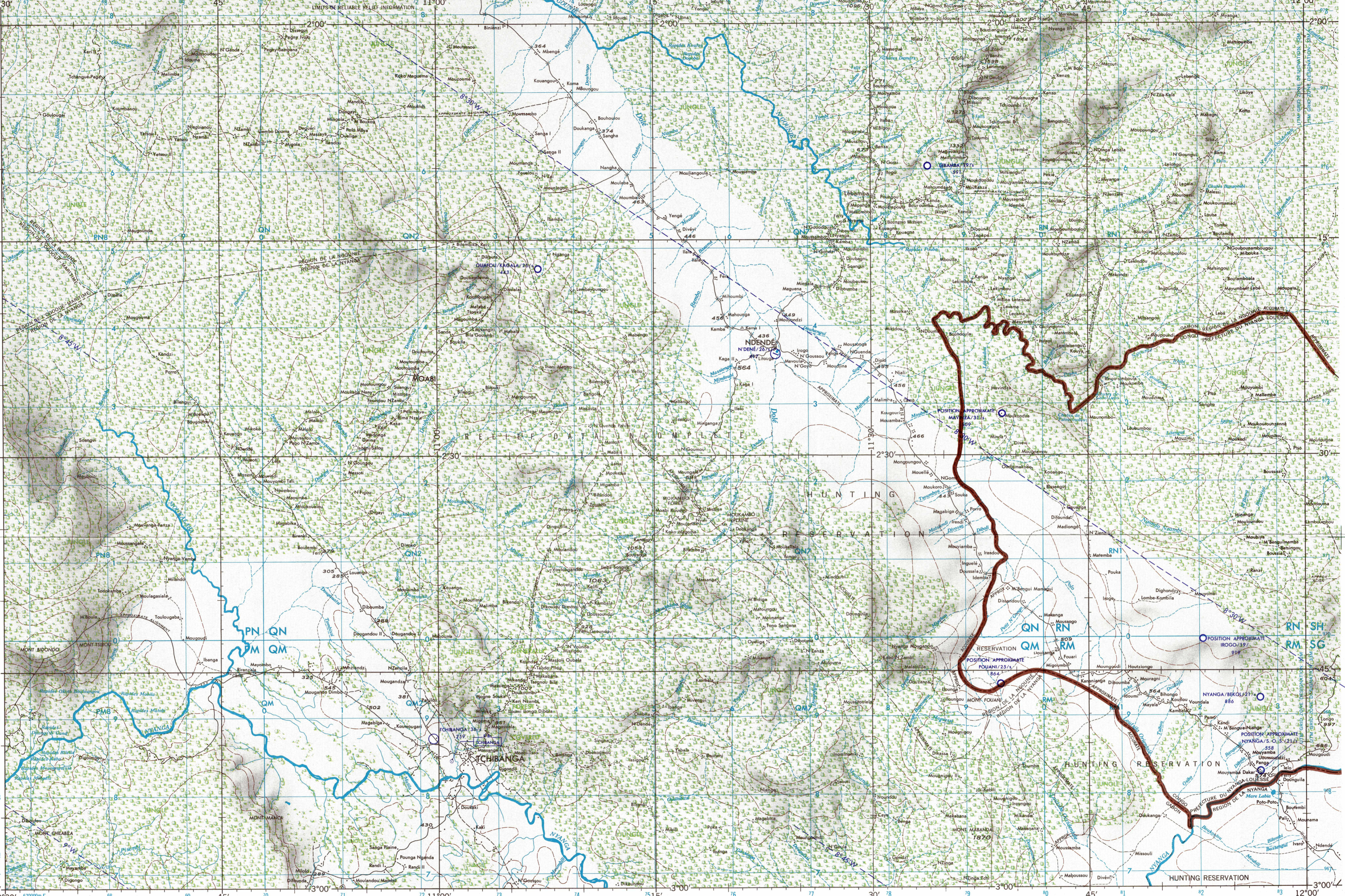
RELIABILITY OF THIS MAP
Accuracy as related to control of map:
Horizontal positions - in excess of 1:50,000;
Contours - undetermined
Type of projection:
Base classification - 1947-63
Vegetation - 1947-1960
All other features - 1947-63
Road classification not verified by reconnaissance
Horizontal Datum: Independent Astronomic Control
Vertical Datum: Mean Sea Level



GLOSSARY
Church waterfall
Forêt forest
Mare stagnant pond
Mont mountain
Plaine plain, flat country
Préfecture primary administrative division
Rapides rapids
Region primary administrative division

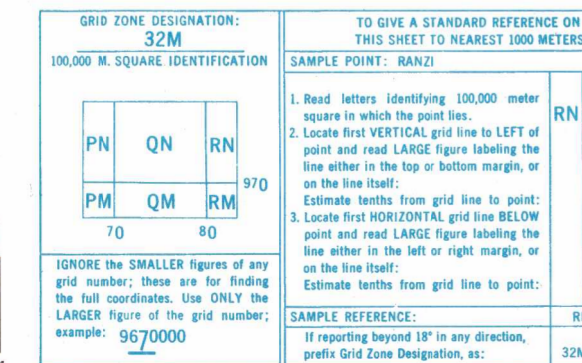


CAUTION—
AIR INFORMATION CURRENT THROUGH 19 OCTOBER 1967
Consult Notices to Airmen (NOTAMS) and Flight Information Publications (FIPs) for the latest air information; the Chart Updating Manual (CHUM) for other chart revision information.
LINES OF EQUAL MAGNETIC VARIATION FOR 1965 (Annual rate of change ± decrease)



Prepared under the direction of the Defense Intelligence Agency and published by Army Map Service, Corps of Engineers, U. S. Army, Washington, D. C. Compiled in 1966 from best available source materials.

AERONAUTICAL APPROACH CHARTS (Code: AC) and/or AERONAUTICAL CHARTS (Code: AGC) completely within this area are discontinued. Those that are partially within this area should be retained until publication of the adjacent Joint Operations Graphic (Air), 1501 AIR. Consult the DOD Bulletin for publication and discontinuance notices.



ELEVATIONS IN FEET

LEGEND

ROADS	All weather, hard surface Two or more lanes wide	1 LANE
	All weather, loose or light surface Two or more lanes wide	2 LANE
	All weather, hard surface One lane wide	3 LANE
	All weather, loose or light surface One lane wide	4 LANE
	Fair or dry weather, loose surface, dirt road	5 LANE
	Cart track	6 LANE
	Footpath, trail	7 LANE
RAILROADS	Normal gauge	8 LANE
	Narrow gauge	9 LANE
	Station	10 LANE
BOUNDARIES	International	11 LANE
	Primary administrative	12 LANE
	Reservation	13 LANE
VEGETATION	Wooded/bushwood	14 LANE
	Scattered trees	15 LANE
	Orchard, plantation, vineyard	16 LANE
	Rice paddy	17 LANE

JOINT OPERATIONS GRAPHIC (AIR)

Scale 1:250,000

5 0 5 10 Statute Miles
5 0 5 10 Kilometers
5 0 5 10 Nautical Miles

RELIEF SHOWN BY FORM LINES

TRANSVERSE MERCATOR PROJECTION

USERS SHOULD REFER TO CORRECTIONS, ADDITIONS, AND COMMENTS TO THE NIMA CUSTOMER HELP DESK: 1-800-455-0898; COMMERCIAL: 214-240-5622; OR 480-6022; OR WRITE TO: DIRECTOR, NATIONAL MAPS AND MAPPING AGENCY, ATTN: COAL, MAIL STOP P-37, 4600 SANGAMORE ROAD, BETHESDA, MD 20815-5003.

BLUE NUMBERED LINES INDICATE THE 10,000 METER UNIVERSAL TRANSVERSE MERCATOR GRID, ZONE 32, CLARKE 1880 SPHEROID

ELEVATIONS IN FEET

AERODROMES (Military or Civil)	EDNA/50/725
Field limits with runway pattern	EDNA—Name 50—Length of longest runway to nearest hundreds of feet —Soft or unimproved surface 725—Elevation
Field limits, with runway pattern unknown	Field limits, with runway pattern unknown
Field limits, unknown, with runway pattern	Field limits, with runway pattern unknown
Field limits and runway pattern unknown	Field limits and runway pattern unknown
SEAPLANE BASE	SEAPLANE (EMERGENCY)
HELIPORT	RADIO FACILITIES
RADIO RANGE U/F/M/F	MULTIPLE RADIO FACILITIES

CONTROLLED AIRSPACE

ADIZ

VISUAL AIDS AND OBSTRUCTIONS

Obstruction	1108 (259)
1108—Elevation of obstruction top, above sea level.	259—Elevation of obstruction top, above ground level.
Group obstruction	Group obstruction
Radio facility obstruction	Radio facility obstruction
Power transmission line	Power transmission line
Ocean station vessel (Normal position)	Ocean station vessel (Normal position)
Visual ground sign	Visual ground sign
Aero light; Marine light	Aero light; Marine light
TERRAIN ELEVATIONS	HIGHEST elevation in UNKNOWN

HIGHEST TERRAIN elevations for each 15 MINUTE QUADRANGLE are represented in THOUSANDS and HUNDREDS of feet. They are omitted where relief information is inadequate. A minus sign (-) following the figure indicates that the figure is based on an estimated elevation.

EXAMPLES:
51 81-

NOTES
No obstructions 200 feet or more above ground level are known to exist within this area.
THE REPRESENTATION OF INTERNATIONAL BOUNDARIES IS NOT NECESSARILY AUTHORITY.

NSN 7641014096128
NIMA REF. NO. 1501ASA3212

SCALE 1:250,000
TCHIBANGA, GABON
SERIES 1501 AIR SHEET SA 32-12 EDITION 1
COMPANION SERIES 1501 SHEET IS EDITION 1