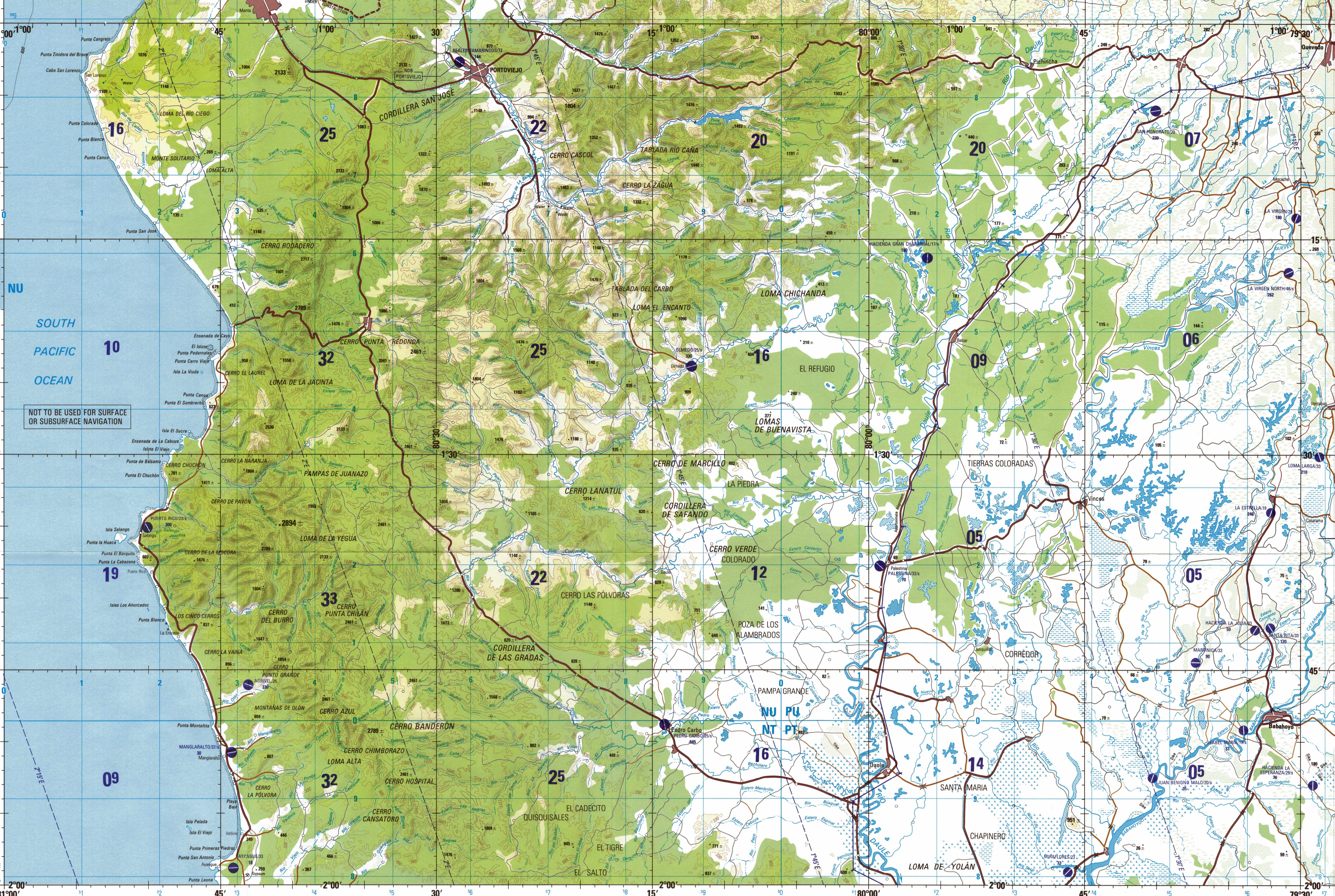


ELEVATION TINTS, RELIABILITY OF THIS GRAPHIC, PLOTTING ACCURACY, GRAPHIC FEATURE, GLOSSARIO GLOSSARY, LOCATION DIAGRAM, CONVERSION OF ELEVATIONS, GEOREF, AIR INFORMATION CURRENT THROUGH, LINES OF EQUAL MAGNETIC VARIATION, CAUTION, ATTENTION

NOT TO BE USED FOR SURFACE OR SUBSURFACE NAVIGATION, LOCATION DIAGRAM (ONC INDEX SHOWN IN BLUE), CONVERSION OF ELEVATIONS, GEOREF, AIR INFORMATION CURRENT THROUGH, LINES OF EQUAL MAGNETIC VARIATION, CAUTION, ATTENTION

CONVERSION OF ELEVATIONS, GEOREF, AIR INFORMATION CURRENT THROUGH, LINES OF EQUAL MAGNETIC VARIATION, CAUTION, ATTENTION

SCALE 1:250,000 PORTOVIEJO, ECUADOR, SERIES 1501 AIR SHEET SA 17-07 EDITION 1



Prepared and published by the DMA Aerospace Center, 3200 South Second Street, St. Louis, Missouri 63118-3399. Compiled Sept. 1993. MAP INFORMATION AS OF 1989 - INFORMACION CARTOGRAFICA EN FECHA DE 1989



THE DATUM AND ELLIPSOID FOR THIS AREA HAVE BEEN CHANGED. FOR ADJACENT AND OVERLAPPING SHEETS, THERE ARE NO SIGNIFICANT CHANGES IN GRID OR GEOGRAPHIC VALUES AT THIS SCALE. SAMPLE 1:000 METER REFERENCE, SAMPLE 1:250,000 REFERENCE, SAMPLE 1:500,000 REFERENCE

ROADS - CAMINOS, RAILROADS - FERROCARRILES, BOUNDARIES - LIMITES, VEGETATION - VEGETACION, JOINT OPERATIONS GRAPHIC (AIR), SCALE 1:250,000, EQUIDISTANCIA APROXIMADA DE LAS CURVAS DE NIVEL 330 PIES, COORDINATE CONVERSION FROM WORLD GEODETIC SYSTEM DATUM

AERODROMES (Military or Civil), CONTROLLED AIRSPACE, RADIO FACILITIES, RADIO AIDS TO NAVIGATION, VISUAL AIDS AND OBSTRUCTIONS, TERRAIN ELEVATIONS

NOTES - NOTAS, ELEVATION MÁS ALTA CONOCIDA EN 2894 PIES EN LAS COORDENADAS SIGUIENTES: 1°35' S, 80°14' W