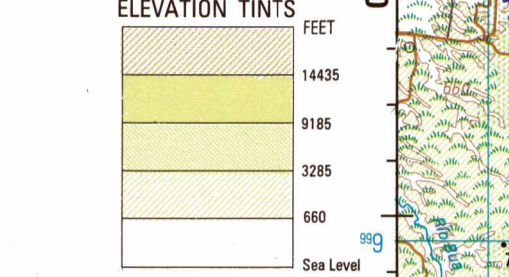


SERIES 1501 AIR SHEET SA 17-4 EDITION 1



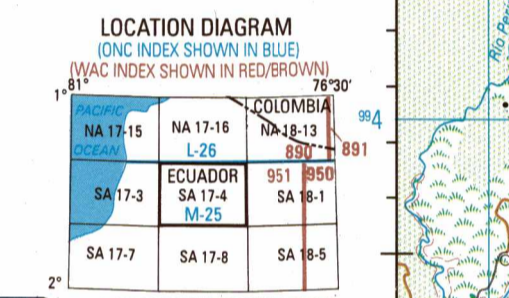
RELIABILITY OF THIS GRAPHIC (as determined by standard practices)

PLOTING ACCURACY	AREA I			AREA II			AREA III		
	width	width	width	width	width	width	width	width	width
Horizontal	500 ft.	420 ft.	420 ft.	500 ft.	420 ft.	420 ft.	500 ft.	420 ft.	420 ft.
Contours	1:200 ft.	1:200 ft.	1:200 ft.	1:200 ft.	1:200 ft.	1:200 ft.	1:200 ft.	1:200 ft.	1:200 ft.
GRAPHIC FEATURE	DATE OF INFORMATION AREA I AREA II AREA III			DATE OF INFORMATION AREA I AREA II AREA III			DATE OF INFORMATION AREA I AREA II AREA III		
All other features	1978	1986	1984	1978	1986	1984	1978	1986	1984

Horizontal Datum: WGS 84
Vertical Datum: Mean Sea Level
Transverse Mercator Projection

GLOSARIO GLOSSARY

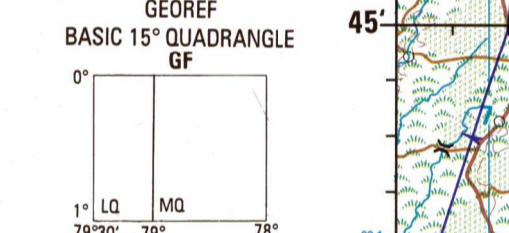
Cerro	hill, mountain
Laguna	lake
Loma	hill, mountain
Rio	stream
Volcán	volcano



THE REPRESENTATION OF BOUNDARIES IS NOT NECESSARILY AUTHORITY.

CONVERSION OF ELEVATIONS

FEET	METERS	FEET	METERS
1000	305	10000	3048
900	274	9000	2743
800	244	8000	2438
700	213	7000	2134
600	183	6000	1829
500	152	5000	1524
400	122	4000	1219
300	91	3000	914
200	61	2000	610
150	46	1500	457
100	31	1000	305



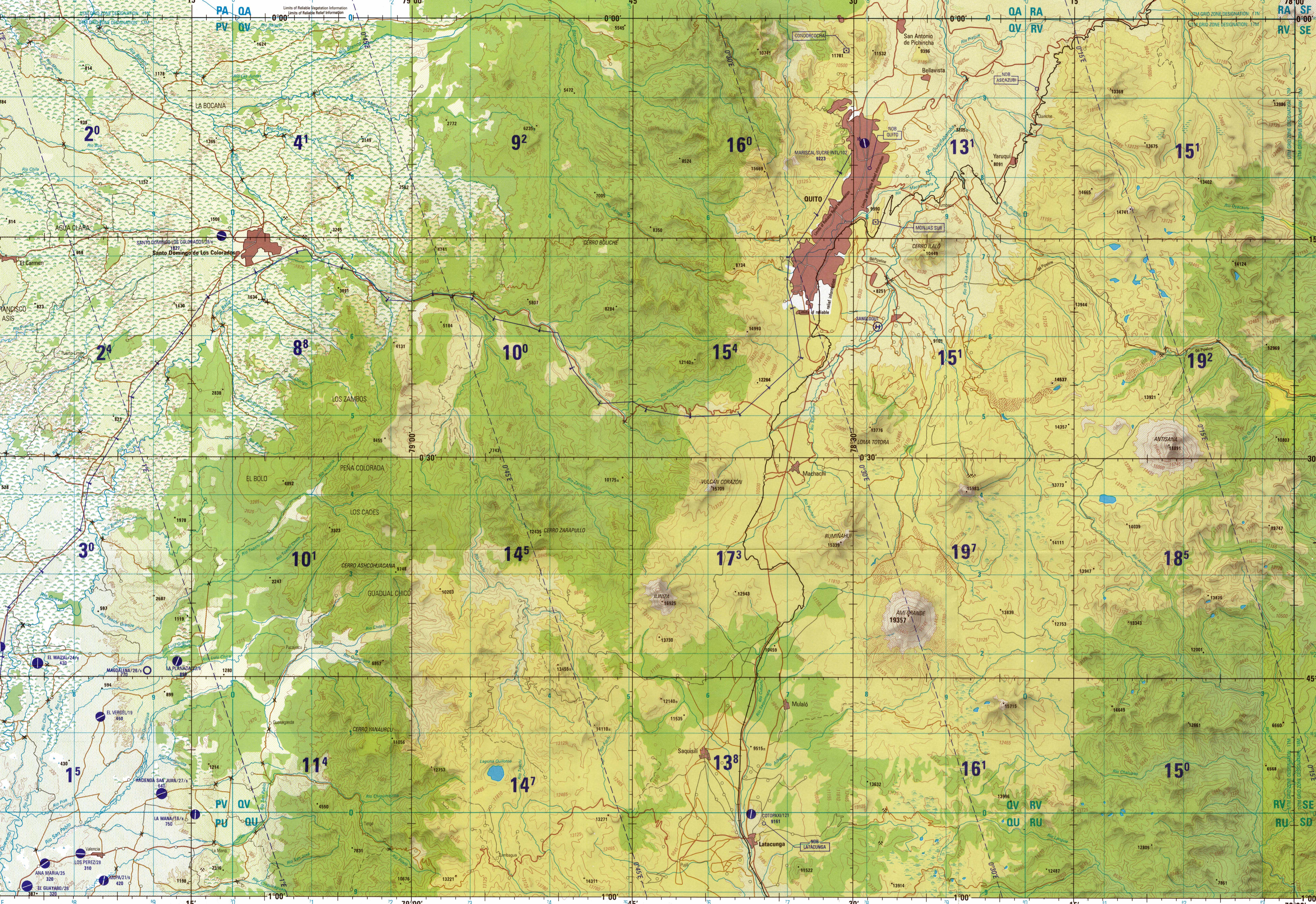
CAUTION AIR INFORMATION CURRENT THROUGH 18 FEBRUARY 1984

CAUTION Vertical obstructions, including positions, have been extracted from the most reliable sources available.

ATTENTION THIS CHART CONTAINS MAXIMUM ELEVATION FIGURES (MEF)



SCALE 1:250,000 QUITO, ECUADOR
SERIES 1501 AIR SHEET SA 17-4 EDITION 1



Prepared and published by the DMA Aerospace Center, 3200 South Second Street, St. Louis, Missouri 63118-3399. Compiled August 1993. MAP INFORMATION AS OF 1986. INFORMACIÓN CARTOGRÁFICA EN FECHA DE 1986.

UNITS	DESCRIPTION	UNITS	DESCRIPTION
17M	1:250,000 QUADRANGLE	17M	1:250,000 QUADRANGLE

ROADS — CAMINOS

Weather: hard surface
Transitable todo el año, superficie sólida

Two lanes wide
Dos vías de ancho

One lane wide
Una vía de ancho

Weather: loose or light surface
Transitable todo el año, superficie suelta o ligera

Two lanes wide
Dos vías de ancho

One lane wide
Una vía de ancho

Weather: loose or light surface
Transitable en tiempo bueno o seco, superficie suelta

Cart track: Camino de herradura
Trail (footpath): Sendero

Narrow gauge
Vía angosta

Multiple track
Vía múltiple

RAILROADS — FERROCARRILES

Normal gauge 0.914m (3')
0.914 metros — Vía ancho o normal

Single track
Una vía

Multiple track
Vía múltiple

BOUNDARIES — LÍMITES

International: Internacional

First-order administrative division: División administrativa de primera

VEGETATION — VEGETACIÓN

Woods: Tropical grass; Bosque; Hierba tropical

Orchard-vineyard; Swamp: Huerta-vivero; Ciénaga

AREA FEATURES — PECULIARIDADES DEL ÁREA

Sand; Lava; Arena; Lava

JOINT OPERATIONS GRAPHIC (AIR)

SCALE 1:250,000

5 10 15 20 25 30 35 40 45 50 55 60 65 70 75 80 85 90 95 100

5 10 15 20 25 30 35 40 45 50 55 60 65 70 75 80 85 90 95 100

CONTOUR INTERVAL APPROXIMATELY 660 FEET WITH SUPPLEMENTARY CONTOURS AT APPROXIMATELY 330 FOOT INTERVALS

EQUIDISTANCIA APROXIMADA DE LAS CURVAS DE NIVEL 660 PIES CON CURVAS SUPLEMENTARIAS A INTERVALOS DE 330 PIES

COORDINATE CONVERSION FROM WGS 84 DATUM WGS 84 ELLIPSOID TO PSA DATUM INTERNATIONAL ELLIPSOID

CONVERSIÓN DE COORDENADA DA WGS 84 DATO WGS 84 ELLIPSOIDE A PSA DATUM INTERNACIONAL ELLIPSOIDE

Geographic: Add 249m E, Add 367m N. Geográfico: Restar 7.7" Long., Restar 12.0" Lat.

BLUENUMBERS INDICATE THE 1:50,000 METER UNIVERSAL TRANSVERSE MERCATOR GRID, ZONE 17, WORLD GEODESIC SYSTEM ELLIPSOID.

LÍNEAS NUMERADAS EN AZUL INDICAN 10,000 METROS DE LA CUADRÍCULA UNIVERSAL TRANSVERSA DE MERCATOR, ZONA 17, ELLIPSOIDE DEL SISTEMA GEODÉSICO MUNDIAL.

USERS SHOULD REFER CORRECTORS, ADDITIONS, AND COMMENTS TO THE MMA CUSTOMER HELP DESK: 1-800-455-0889, COMMERCIAL: 314-260-5032; OR WRITE TO: DIRECTOR, NATIONAL HAZARD AND MARINE AGENCY, ATTN: CDD, MAIL STOP P-37, 4800 SANGAMORE ROAD, BETHESDA, MD 20816-6003.

©COPYRIGHT 1984 BY THE UNITED STATES GOVERNMENT. NO COPYRIGHT CLAIM UNDER TITLE 17 U.S.C.

©EL GOBIERNO DE LOS ESTADOS UNIDOS 1984

NI SE RECLAMAN DERECHOS DE AUTOR BAJO TÍTULO 17 U.S.C. (DÍGONO DE LOS ESTADOS UNIDOS)

AERODROMES (Military or Civil)

AERODROMES (Militares o civiles)

EDNA/50/5

EDNA-Name
EDNA-Nombre del aeródromo

50-Length of longest runway to nearest hundreds of feet
50-Longitud de la pista en la centena de pies

s-Soft or unimproved surface
s-superficie suelta o no mejorada

u-Unknown surface
u-superficie desconocida

725-Elevation
725-Elevación

Runway pattern unknown
Configuración de pista desconocida

HELIPORT/HELIPAD
HELIPORTO/PLATAFORMA DE HELIPORTO

HELIPORT/HELIPAD AT HOSPITAL
HELIPORTO/HELIPAD EN UN HOSPITAL

HELIPORT/PLATAFORMA DE HELIPORTO UBICADO/A EN UN HOSPITAL

CONTROLLED AIRSPACE

ESPACIO AEREO CONTROLADO

ADIZ (ZONA DE IDENTIFICACIÓN DE DEFENSA AEREA)

RADIO FACILITIES

INSTALACIONES DE RADIO

RADIO RANGE LF/MF
RADIOFARO LF/MF

MULTIPLE RADIO FACILITIES
INSTALACIONES MÚLTIPLES

RADIO AIDS TO NAVIGATION

RADIOAYUDAS A LA NAVEGACION

VHF OMNI RANGE (VOR)
RADIOFARO OMNIDIRECCIONAL

VOR with DME
VOR con DME

VOR with DME INSTALLED
CONJUNTAMENTE

VORTAC
VORTAC

TACAN
TACAN

VISUAL AIDS AND OBSTRUCTIONS

OBSTACULOS Y AYUDAS VISUALES

Obstruction: Obstrucción

1833 -Elevation of obstruction top, above sea level
1833 -Elevación de obstrucción top, above ground level

Elevation of the obstacle, above the level of terrain
Elevación de la obstrucción, sobre el nivel del terreno

Power transmission line: Línea de alta tensión

Visual ground sign: Señal terrestre visual

Aero light: Marine light

Light: Luz

TERRAIN ELEVATIONS ELEVACIONES DEL TERRENO

Spot elevation: Normal, Critical
Punto aislado, Normal, Crítico

Highest known elevation is 19357 feet at the following coordinates:
Elevación más alta conocida es 19357 pies en las coordenadas siguientes

Geographic: 0°41'S, 78°26'W
Geográfica: 0°41'S, 78°26'W

Grid: QV8525
Cuadrícula: QV8525

NSN 7641014100340 ED. NO. 001
NIMA REF. NO. 1501ASA1704