

SERIES 1501 AIR SHEET NO 58-7 EDITION 1

- LEGEND**
- POPULATED PLACES**
- OVER 100,000
 - 50,000 to 100,000
 - 2,000 to 50,000
 - less than 2,000
- ROADS**
- Dual highways; Under construction
 - All weather hard surface
 - Two or more lanes wide
 - One lane wide
 - All weather loose or light surface
 - Two or more lanes wide
 - One lane wide
 - Fair or dry weather
 - Loose surface
 - Track or trail
- RAILROADS**
- Normal gauge 1.523m (5'0")
 - Narrow gauge
- BOUNDARIES**
- International
 - Primary administrative
 - Territory administrative
- TERRAIN ELEVATIONS**
- HIGHEST KNOWN elevation is 3973 feet at 57°50'N, 162°42'E
 - Spot elevation (Normal; Critical) .768 .1549
 - Horizontal control point
 - ± following elevation value indicates accuracy is not within 165 feet.
- VEGETATION**
- Woods - brushwoods
 - Inundated land
 - Seawalls, piers
 - Swamp or marsh
 - Depth curve
 - Intermittent straits
 - Reef, limit of danger
 - Well, Spring
 - Ferential lake
 - Dam
 - Navigable canal
 - Falls
 - Rapids
 - Rocks, Sunkay, Awash
 - Glacier
- AERODROMES**
- Field limits with runway pattern
 - EDNA - Name
 - 50 - length of longest runway to nearest hundreds of feet
 - U - Soft or unimproved surface
 - U - Unknown surface
 - 725 - Elevation
 - Field limits, with runway pattern unknown
 - Field limits unknown, with runway pattern
 - Field limits and runway pattern unknown
- SEAPLANE BASE**
- SEAPLANE (EMERGENCY)**
- HELIPORT**
- RADIO FACILITIES**
- RADIO RANGE U/MF
 - MULTIPLE RADIO FACILITIES
 - CONTROLLED AIRSPACE
- ADIZ**
- VISUAL AIDS AND OBSTRUCTIONS**
- Obstruction
 - 1108 - Elevation of obstruction top, above sea level, (259) - Elevation of obstruction top, above ground level.
 - Group obstruction
 - Radio facility obstruction
 - Power transmission line
 - Ocean station vessel (Normal position)
 - Visual ground sign
 - Aero light; Marine light

CAUTION

AIR INFORMATION CURRENT THROUGH 4 JUNE 1969

Consult Notices to Airmen (NOTAMS) and Flight Information Publications (FIPs) for the latest air information; the Chart Updating Manual (CHUM) for other chart revision information.

Maximum Terrain elevation figures centered in the area bounded by ticked lines of LATITUDE and LONGITUDE are represented in THOUSANDS and HUNDREDS of feet. BUT DO NOT INCLUDE ELEVATIONS OF VERTICAL OBSTRUCTION. MAXIMUM TERRAIN ELEVATION FIGURES ARE OMITTED IN UNSURVEYED AREAS AND AREAS WHERE RELIEF INFORMATION IS INADEQUATE.

EXAMPLES

5100 feet ... 51 ... 8100 feet ... 81-

Lines of equal magnetic variation for 1965 (Annual rate of change - no change)

NOTES:

Only obstructions 200 feet or more above ground level are shown. The information on obstructions is not necessarily complete.

Road classification should be referred to with caution.

On this graphic a lane is generally considered as being 2.5 meters (8 feet) in width.

Prepared under the direction of the Department of Defense and published by the Aeronautical Chart and Information Center, U.S. Air Force, St. Louis, Missouri, 63118. Compiled March 1968 from best available source.



SCALE 1:250,000
UKA, U.S.S.R.

SERIES 1501 AIR SHEET NO 58-7 EDITION 1

GRID COORDINATE

TO GIVE A STANDARD REFERENCE ON THIS SHEET TO NEAREST 1000 METERS

1. Place index. Measure 100,000 meter square in which the point lies.

2. Locate the index. Put the 1000 meter square in which the point lies in the left margin, or in the bottom margin, or on the right margin.

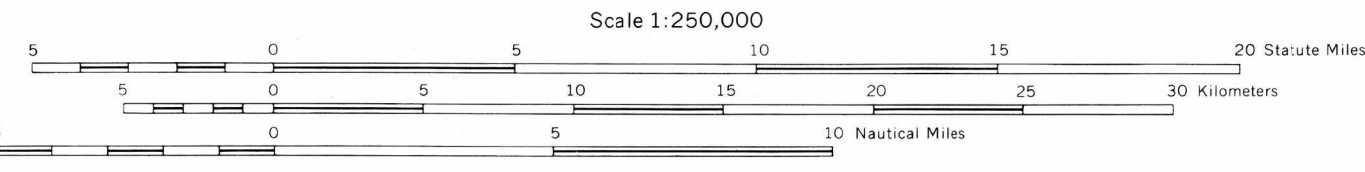
3. Estimate the point. Estimate the point in the grid line to the point. Estimate the point in the grid line to the point. Estimate the point in the grid line to the point.

SAMPLE REFERENCE:

162°00' 32' 00" E 57°00' 15" N

ELEVATIONS IN FEET DEPTHS IN FATHOMS

JOINT OPERATIONS GRAPHIC (AIR)



CONTOUR INTERVAL APPROXIMATELY 330 FEET (100 METERS)

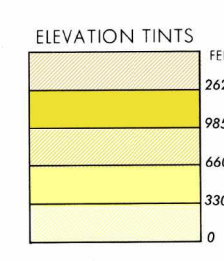
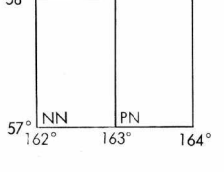
BLUE NUMBERED LINES INDICATE THE 10,000 METER UNIVERSAL TRANSVERSE MERCATOR GRID, ZONE 58, INTERNATIONAL SPHEROID

USERS SHOULD REFER CORRECTIONS, ADDITIONS, AND COMMENTS TO THE NIMA OPERATIONAL HELP DESK: 1-800-455-6889 COMMERCIAL 314-262-4884; DSN 688-4884; OR WRITE TO: DIRECTOR, NATIONAL IMAGERY AND MAPPING AGENCY, ATTN: ES, MAIL STOP 4-88, 4806 SANGHVI ROAD, BETHESDA, MD 20815-5002

ELEVATIONS IN FEET DEPTHS IN FATHOMS

- GLOSSARY**
- Gora mountain
 - Guba bay
 - Khrebet mountain range
 - Liman estuary
 - Ostrov island
 - Polostrov peninsula
 - Zaliv bay

GEOREF BASIC 15° QUADRANGLE



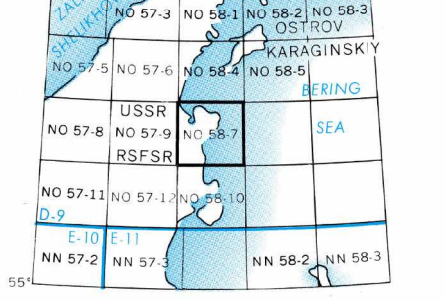
RELIABILITY OF THIS SHEET

(as determined by standard practices)

MAP FEATURE	DATE OF INFORMATION
Area I	Area II
Existing hydrography	1968
All other features	1968

Compiled from best available source materials

LOCATION DIAGRAM FOR NO 58-7 (ONC INDEX SHOWN IN BLUE)



Horizontal Datum: WGS 66
Vertical Datum: Mean Sea Level
Transverse Mercator Projection

NSN 7641014959354
NIMA Ref No 1501AN05807