

SERIES 1501 AIR SHEET NO 45-10 EDITION 2

- POPULATED PLACES**
- Over 100,000 IRKUTSK
  - 50,000 to 100,000 SHELEKHOV
  - 10,000 to 50,000 SLYUDYANKA
  - 2,000 to 10,000 Meget
  - Less than 2,000
- ROADS**
- Dual highway 4 LANES DUAL
  - All weather, hard surface More than two lanes wide 3 LANES
  - Two lanes wide 3 LANES
  - One lane wide 3 LANES
  - All weather, loose or light surface 3 LANES
  - More than two lanes wide 3 LANES
  - Two lanes wide 3 LANES
  - One lane wide 3 LANES
  - Fair or dry weather, loose surface 3 LANES
  - Track, trail 3 LANES
  - Route marker 3 LANES
- RAILROADS**
- Normal gauge 1.52m (5') Single track Multiple track
  - Narrow gauge 1.52m (5')
- BOUNDARIES**
- International
  - First-order administrative division
  - Reservation
- OTHER FEATURES**
- Landmark
  - Horizontal control point
  - Lever, Benial mound
  - Mine Tank
  - Dam or lock, Sand
- VEGETATION**
- Woods
- HYDROGRAPHY**
- Well: Perennial, Intermittent
  - Intermittent streams: Single, Double line
  - Disappearing stream: Swamp or marsh
  - Intermittent lake: Dry lake
- TERRAIN ELEVATIONS**
- Spot elevation: normal, critical
  - HIGHEST KNOWN elevation is 1034 feet at the following coordinates: 56°08'N, 85°30'E
- AERODROMES (Military or Civil)**
- Runway pattern known EDNA-50
  - EDNA-Name
  - 50-Length of longest runway to nearest hundreds of feet
  - Soft or unimproved surface
  - Unknown surface
  - 725-Elevation
  - Runway pattern unknown
- HELIPORT/HELIPAD**
- HELIPORT/HELIPAD AT HOSPITAL
- RADIO AIDS TO NAVIGATION**
- VHF OMNI RANGE (VOR)
  - VORTAC
  - TACAN
  - VOR with DME
  - Other facilities
- RADIO FACILITIES**
- RADIO RANGE LF/MF
  - MULTIPLE RADIO FACILITIES
- CONTROLLED AIRSPACE**
- ADIZ ATLANTIC ADIZ
- VISUAL AIDS AND OBSTRUCTIONS**
- Obstruction 1108 (250)
  - 1108-Elevation of obstruction top, above sea level (250)-Elevation of obstruction top, above ground level
  - Group obstruction
  - Radio facility obstruction
  - Power transmission line
  - Visual ground sign
  - Aero light: Marine light

**CAUTION**  
AIR INFORMATION CURRENT THROUGH 07 DECEMBER 1988  
Consult NOTAMS and Flight Information Publications for the latest air information; the NIMA Aeronautical Chart Updating Manual or MOD (U.K.) Aeronautical Chart Amendment document, for other chart revision information.

**ATTENTION**  
THIS CHART CONTAINS MAXIMUM ELEVATION FIGURES (MEF)  
The Maximum Elevation Figures shown in quadrangle bounded by ticked lines of latitude and longitude are represented in THOUSANDS and HUNDREDS of feet above mean sea level. The MEF is based on information available concerning the highest known features in each quadrangle, including terrain and obstructions (towers, towers, antennas, etc.)

**LOCATION DIAGRAM**  
(MAG INDEX SHOWN IN RED/BROWN)

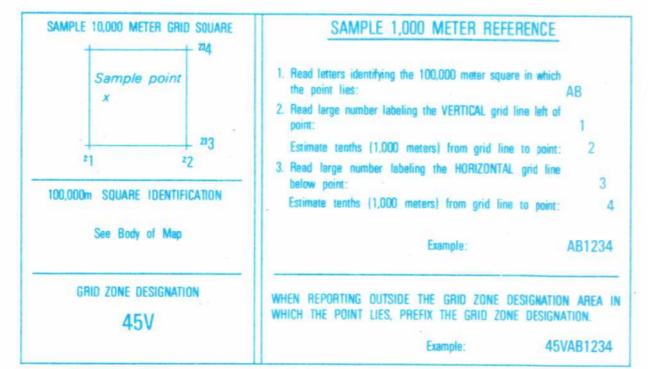
NO 44-5	NO 44-6	NO 45-4	NO 45-5	NO 45-6
NO 44-8	NO 44-9	NO 45-7	NO 45-8	NO 45-9
NO 44-11	NO 44-12	NO 45-10	NO 45-11	NO 45-12
NN 44-2	NN 44-3	NN 45-1	NN 45-2	NN 45-3
NN 44-5	NN 44-6	NN 45-4	NN 45-5	NN 45-6

Prepared and published by the National Imagery and Mapping Agency, Compiled April, 1978. Revised May, 1988.



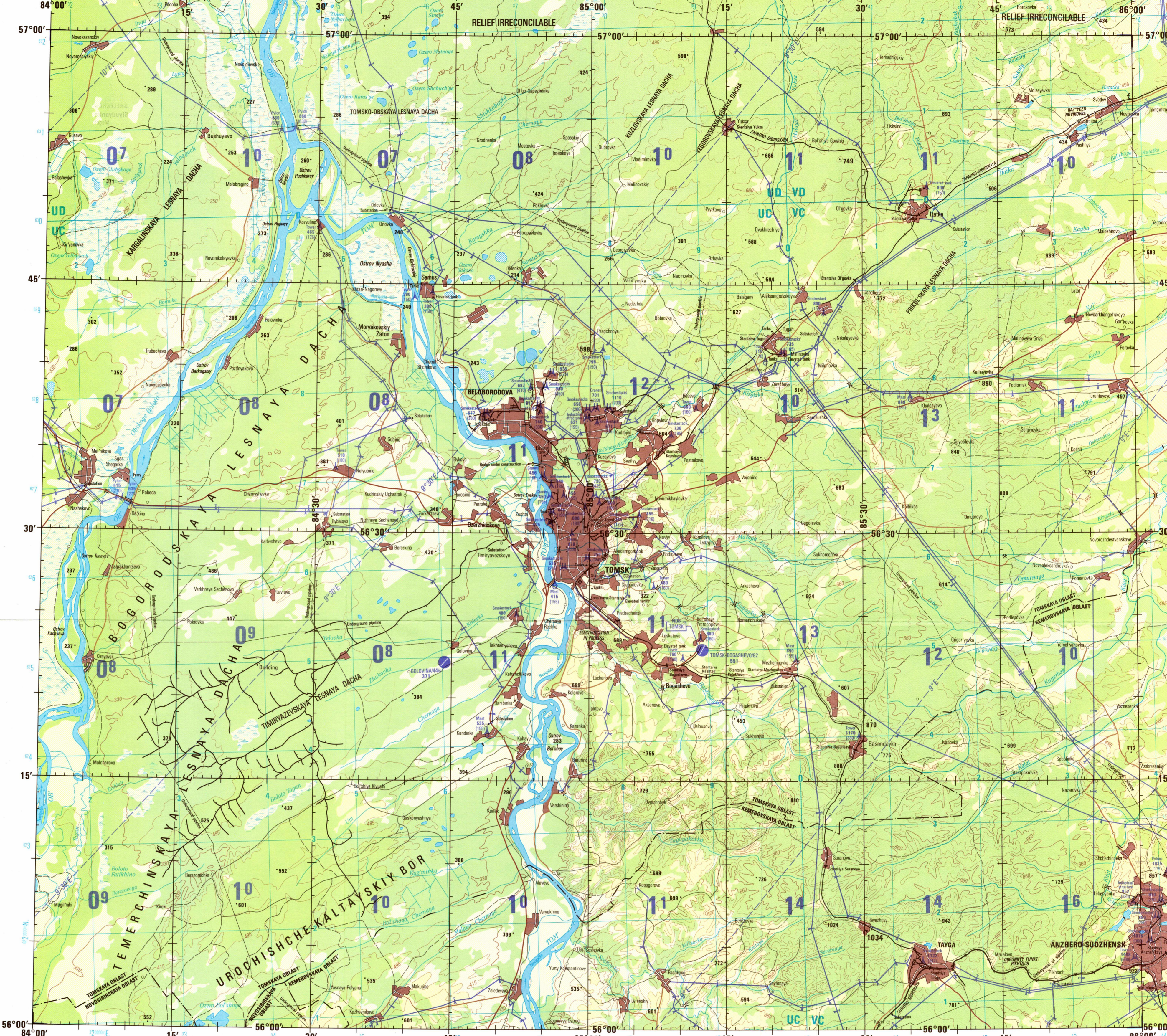
**CONVERSION OF ELEVATIONS**

FEET	METERS	FEET	METERS
100	30.5	1000	304.8
200	61.0	2000	609.6
300	91.4	3000	914.4
400	121.9	4000	1219.2
500	152.4	5000	1524.0
600	182.9	6000	1828.8
700	213.4	7000	2133.6
800	243.8	8000	2438.4
900	274.3	9000	2743.2
1000	304.8	10000	3048.0



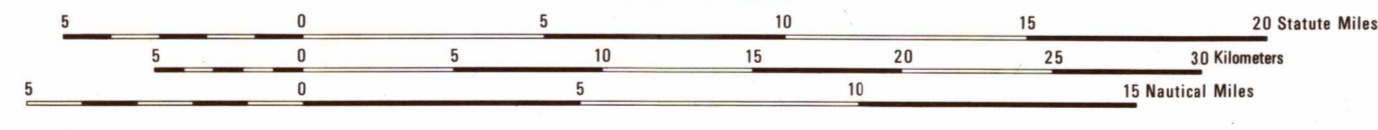
**SCALE 1:250,000**  
TOMSK, RUSSIA

SERIES 1501 AIR SHEET NO 45-10 EDITION 2



**JOINT OPERATIONS GRAPHIC (AIR)**

SCALE 1:250,000

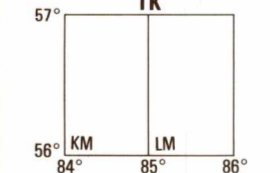


CONTOUR INTERVAL APPROXIMATELY 85 FEET

USERS SHOULD REFER CORRECTIONS, ADDITIONS, AND COMMENTS TO:  
(US USERS) NIMA CUSTOMER HELP DESK: 1-800-455-0899, COMMERCIAL 1-314-260-5022, DSN 480-5022, OR WRITE TO:  
ATTN: CDD, MAIL STOP P-37, NATIONAL IMAGERY AND MAPPING AGENCY, 4602 SANGAMORE ROAD, BETHESDA, MD 20816-5003  
(UK USERS) DIRECTORATE OF MILITARY SURVEY, MINISTRY OF DEFENSE, ELWOOD AVENUE, FETHAM, MIDDLESEX TW13 7JH.

- GLOSSARY**
- Boloto marsh
  - Lesnaya Dacha forest
  - Ogonyony Punkt passing siding
  - Otkryt first-order administrative division
  - Ostrov Island
  - Puk'yeod lake
  - Santovna railroad siding
  - Stantsiya station
  - Urochishche field
  - Vodohranilishche reservoir

**GEOREF BASIC 15° QUADRANGLE**



**RELIABILITY OF THIS GRAPHIC**  
(as determined by standard practices)

1988	1997
1988	1988
PLOTTING ACCURACY ASSURANCE	
Horizontal	within 600 ft.
Contour	within 50 ft.
GRAPHIC FEATURE INFORMATION	
ALL FEATURES	See diagram
Horizontal Datum: World Geodetic System Vertical Datum: Mean Sea Level Transverse Mercator Projection	

**NOTES**

Powerlines are shown except within populated place limits. Other obstructions are shown, if they are 150 feet or more above ground level. See caution notes.

A one lane road is from 8 to 16 feet (2.5 to less than 5.5 meters) wide. For roads two or more lanes wide, a lane is considered to be from 5 to 15 feet (1.5 to 4.5 meters) wide.

BOUNDARY REPRESENTATION IS NOT NECESSARILY AUTHORITY.

Road classification should be referred to with caution.

ALIGNMENT OF ALL BOUNDARIES IS APPROXIMATE.

NSN 7641014645109  
NIMA REF. NO. 1501ANO4510