

SERIES 1501 AIR SHEET NO 39-10 EDITION 1

POPULATED PLACES

Over 100,000 MOSKVA
 50,000 to 100,000 KLIMOVSK
 10,000 to 50,000 Obukhovo
 2,000 to 10,000 Kubinka
 Less than 2,000 Dubny

ROADS

Dual highway 4 LANES DUAL
 All weather, hard surface
 More than two lanes wide 4 LANES
 Two lanes wide
 One lane wide 3 LANES
 All weather, loose or light surface
 More than two lanes wide
 Two lanes wide
 One lane wide
 Fair or dry weather, loose surface
 Cart track
 Footpath, trail
 Route marker
 Route marker

RAILROADS

Normal gauge, single track 1 5/8" (5'0"); Double track
 Narrow gauge

BOUNDARIES

International
 First-order administrative
 OTHER FEATURES

Mine or quarry
 Campsite; Ruins; Watermill
 School; Church; Landmark
 Mosque; Muslim shrine
 Small reservoir or cistern
 Well; Perennial; Intermittent; Spring
 Underground aqueduct with shafts
 Sabkha or Dry lake; Intermittent lake
 Single line intermittent stream; Wadi
 Marsh or swamp; Land subject to inundation
 Mound; Levee
 Mufflat; Distorted surface
 Sand, flat or rolling; Sand dunes
 Horizontal control point

VEGETATION

Woods; Brushwood; Scattered trees
 Orchard; vineyard; Scrub

HYDROGRAPHY

Rocks, uncovering or awash
 Exposed wreck
 Limit of danger; Reef
 Foreshore flat
 Depth curve; Lighthouse

TERRAIN ELEVATIONS

Spot elevation, normal; critical
 HIGHEST KNOWN elevation is 919 feet at the following coordinates:
 Geographic: 56°31' N, 49°00' E
 Grid: UC7765

AERODROMES (Military or Civil)

Runway pattern known
 Field limits and runway pattern unknown

RADIO FACILITIES

VOR VORTAC
 TACAN VORTOME

CONTROLLED AIRSPACE

ADIZ

VISUAL AIDS AND OBSTRUCTIONS

Obstruction
 1108-Elevation of obstruction top, above sea level.
 (258)-Elevation of obstruction top, above ground level.
 Group obstruction
 Radio facility obstruction
 Power transmission line
 Visual ground sign
 Aero light; Marine light

CAUTION

Vertical obstructions, including powerlines, have been omitted from the most reliable sources available. However, there is no assurance that all are shown, or that their location or height are exact.

CAUTION

AIR INFORMATION CURRENT THROUGH 25 FEBRUARY 1999

Consult NOTAMS and Flight Information Publications for the latest air information; the NIMA Aeronautical Chart Updating Manual or MOA (U.K.) Aeronautical Chart Amendment document, for other chart revision information.

ATTENTION

THIS CHART CONTAINS MAXIMUM ELEVATION FIGURES (MEF)

The Maximum Elevation Figures shown in quadrangles bounded by ticked lines of latitude and longitude are represented in THOUSANDS and HUNDREDS of feet above mean sea level. The MEF is based on information concerning the highest known feature in each quadrangle, including terrain and obstructions (trees, towers, antennas, etc.).

EXAMPLE: 12,500 feet 12⁵

LOCATIONS OF EQUAL MAGNETIC VARIATION FOR 1995 (Annual rate of change 2° increase)

LOCATION DIAGRAM (WAC INDEX SHOWN IN REDBROWN)

NO 38-5	NO 38-6	NO 38-7	NO 38-8	NO 38-9	NO 38-10
NO 38-11	NO 38-12	NO 38-13	NO 38-14	NO 38-15	NO 38-16
NO 38-17	NO 38-18	NO 38-19	NO 38-20	NO 38-21	NO 38-22
NO 38-23	NO 38-24	NO 38-25	NO 38-26	NO 38-27	NO 38-28

SCALE 1:250,000 ARSK, RUSSIA

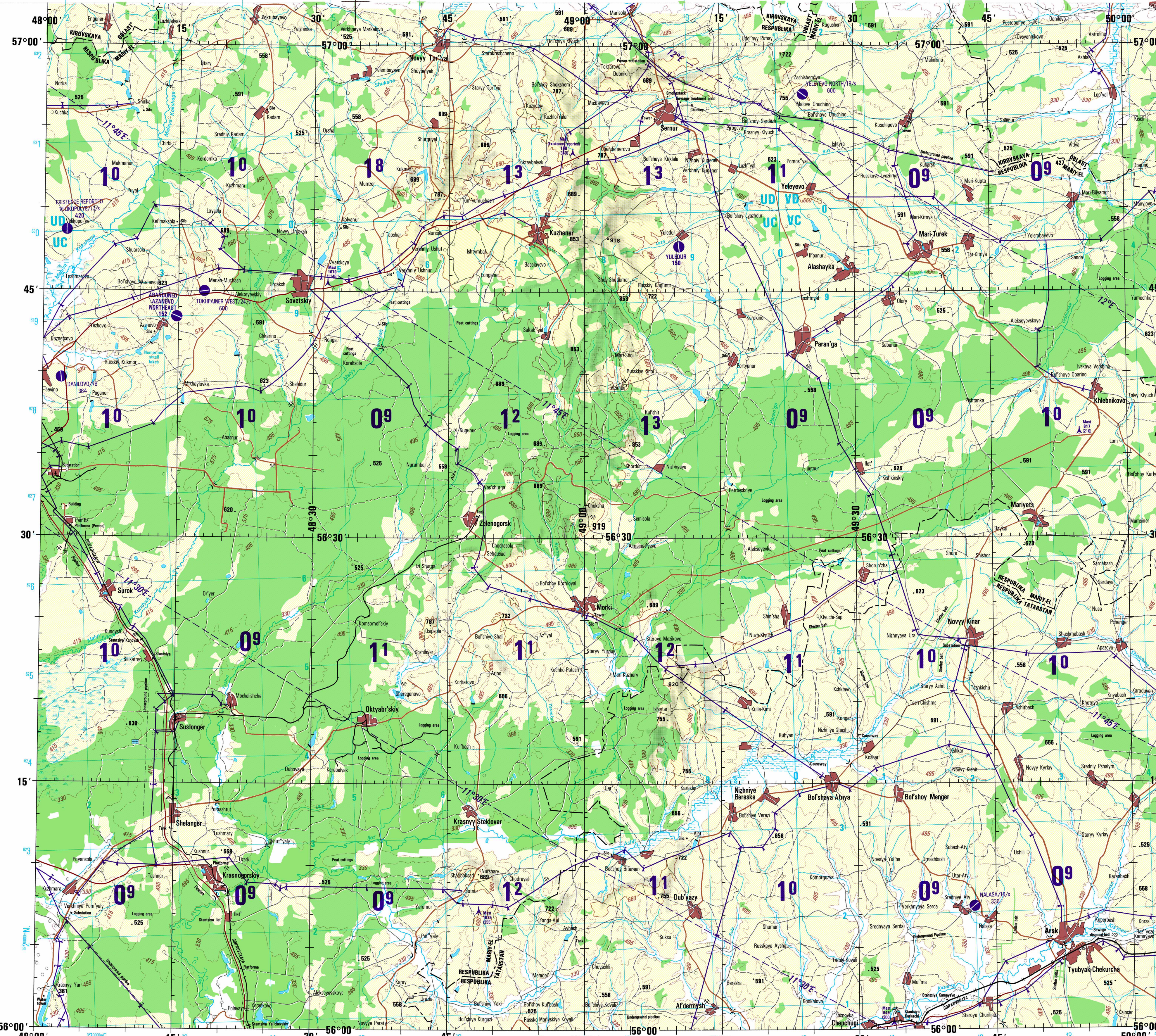
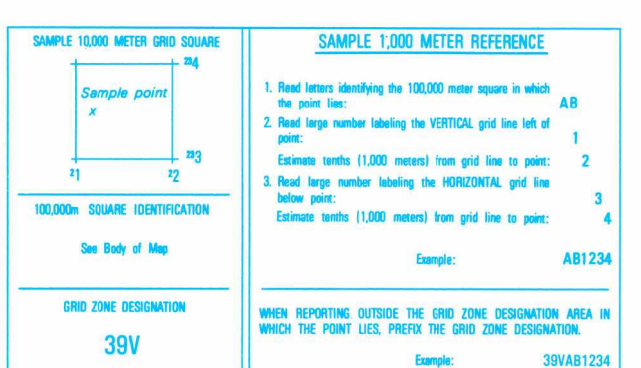
SERIES 1501 AIR SHEET NO 39-10 EDITION 1

Prepared and published by the National Imagery and Mapping Agency, Compiled August 1998.

MAP INFORMATION AS OF 1996

CONVERSION OF ELEVATIONS

FEET	METERS	FEET	METERS
1000	305	10000	3048
500	152	5000	1524
100	30	1000	305

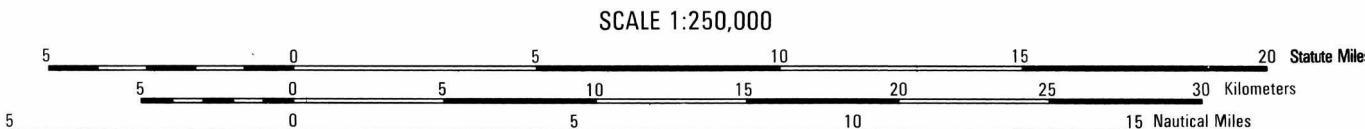


ELEVATIONS IN FEET

SCALE 1:250,000

CONTOUR INTERVAL APPROXIMATELY 165 FEET WITH SUPPLEMENTARY CONTOURS AT APPROXIMATELY 85 FOOT INTERVALS

BLUE NUMBERED LINES INDICATE THE 10,000 METER TRANSVERSE MERCATOR GRID, ZONE 38, WORLD GEODETIC SYSTEM 1984 ELLIPSOID.



CONTOUR INTERVAL APPROXIMATELY 165 FEET WITH SUPPLEMENTARY CONTOURS AT APPROXIMATELY 85 FOOT INTERVALS

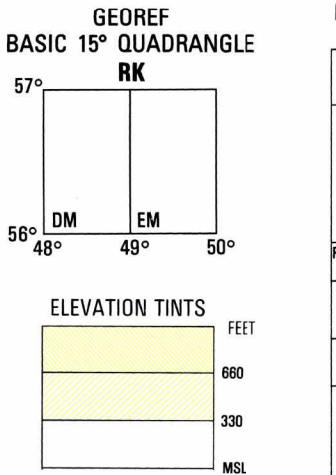
COORDINATE CONVERSION FROM WORLD GEODETIC SYSTEM 1984 DATUM TO WORLD GEODETIC SYSTEM 1972 DATUM

Grid: Subtract 10mE, Subtract 4mN
 Geographic: Subtract 0.4° Long, Subtract 0.1° Lat.

USERS SHOULD RESEEK CONNECTIONS, ADDITIONS, AND COMMENTS TO THE NIMA CUSTOMER HELP DESK: 1-800-45-HOME (COMMERCIAL 304-386-5000; DSN 496-5000; OR WRITE TO: DIRECTOR, NATIONAL IMAGERY AND MAPPING AGENCY, ATTN: CDD, MAIL STOP P-37, 4800 SANDHURST ROAD, BELTSMITH, MD 20618-9803.

GLOSSARY

Platform: platform
 Plat: plat
 Respublika: first-order administrative division
 Stantsiya: railroad station
 Vodokhranilishche: reservoir



RELIABILITY OF THIS GRAPHIC (As determined by standard practices)

I	II	III
Plotting Accuracy	Area I	Area II
90% Assurance	Area III	Area IV
Horizontal Contours	800 ft. 800 ft. 800 ft.	100 ft. 100 ft. 100 ft.
Vertical Contours	50 ft. 50 ft. 50 ft.	10 ft. 10 ft. 10 ft.
GRAPHIC FEATURE	AREA I	AREA II
Contours	1982	1982
All other features	1993	1995

Horizontal Datum: World Geodetic System 1984
 Vertical Datum: Mean Sea Level
 Transverse Mercator Projection

NOTES

Powerlines are shown except within populated place tints. Other obstructions are shown, if they are 200 feet or more above ground level. See caution note.

On this graphic a lane is generally considered as being 8 feet (2.5 meters) in width.

Road classification should be referred to with caution. THE REPRESENTATION OF BOUNDARIES IS NOT NECESSARILY AUTHORITATIVE.

NSN 7641014595789

NIMA REF. NO. 1501ANQ3910