

SERIES 1501 AIR
SHEET NO 38-6
EDITION 1

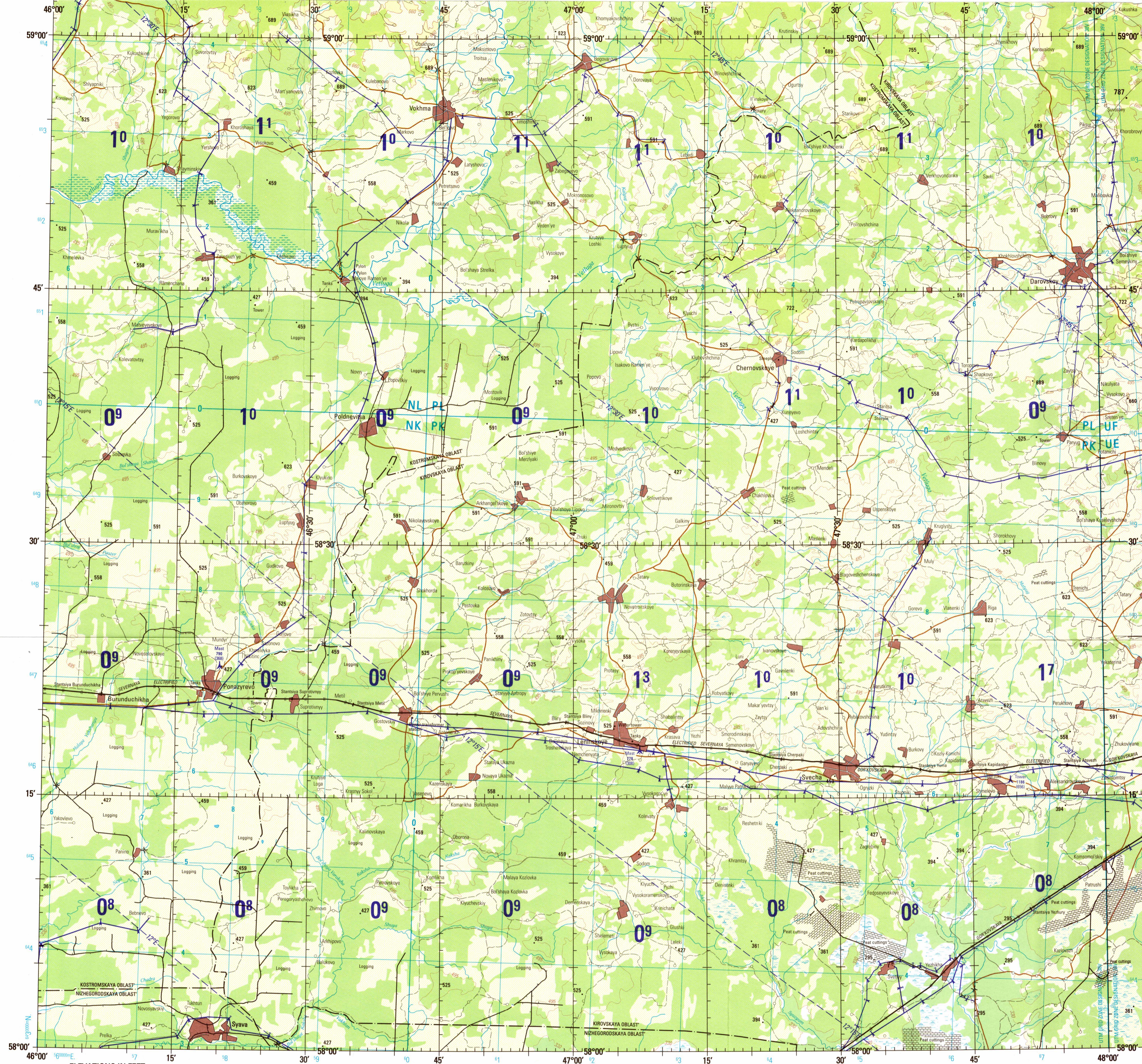
- SERIES 1501 COMPANION SHEET IS EDITION 1
- POPULATED PLACES**
- Over 100,000 MOSCOW
 - 50,000 to 100,000 MAGADAN
 - 10,000 to 50,000 Okha
 - 2,000 to 10,000 Anadyr
 - Less than 2,000 Klerk
- ROADS**
- All weather, hard surface 4 LANES
 - More than two lanes wide
 - Two lanes wide
 - One lane wide
 - All weather, loose or light surface 3 LANES
 - More than two lanes wide
 - Two lanes wide
 - One lane wide
 - Fair or dry weather, loose surface
 - Track
- RAILROADS**
- Normal gauge 5'0" (1.52m) Single track Multiple track
 - Narrow gauge
- BOUNDARIES**
- International
 - First-order administrative
- OTHER FEATURES**
- Landmark feature
 - Levee
 - Horizontal control point
 - Marsh or swamp, Land subject to inundation
- VEGETATION**
- Woods
- TERRAIN ELEVATIONS**
- Spot elevation, normal, critical 646 840
 - HIGHEST KNOWN elevation is **787** feet at the following coordinates:
Geographic 58°56'N, 48°03'E
Grid UF3137

- AERODROMES (Military or Civil)**
- EDNA/50's EDNA/50's
 - Runway pattern known
 - EDNA-Name
 - 50- Length of longest runway to nearest hundreds of feet
 - s- Soft or unimproved surface
 - u- Unknown surface
 - 725- Elevation
 - Runway pattern unknown
- HELIPORT/HELIPAD**
- RADIO FACILITIES**
- VHF OMNI RANGE (VOR)
 - VORTAC
 - TACAN
 - VOR with DME
 - Other facilities
- CONTROLLED AIRSPACE**
- ADIZ CONUS ADIZ
- VISUAL AIDS AND OBSTRUCTIONS**
- Obstruction 1108
 - 1108- Elevation of obstruction top, above sea level
(259)- Elevation of obstruction top, above ground level
 - Group obstruction
 - Radio facility obstruction
 - Power transmission line
 - Visual ground sign
 - Aero light, Marine light

CAUTION
Vertical obstructions, including powerlines, have been extracted from the most reliable sources available. However, there is no assurance that all are shown, or that their locations or heights are exact.

CAUTION
AIR INFORMATION CURRENT THROUGH 14 OCTOBER 1999
Consult NOTAMS and Flight Information Publications for the latest air information; the DOD Aeronautical Chart Updating Manual or MOD (UK) Aeronautical Chart Amendment document, for other chart revision information.

ATTENTION
THIS CHART CONTAINS MAXIMUM ELEVATION FIGURES (MEF)
The Maximum Elevation Figures shown in quadrangles bounded by dotted lines of latitude and longitude are represented in THOUSANDS and HUNDREDS of feet above mean sea level. The MEF is based on information available concerning the highest known feature in each quadrangle, including terrain and obstructions (trees, towers, antennas, etc.).
EXAMPLE: 12,500 feet. **12⁵**



ELEVATIONS IN FEET

JOINT OPERATIONS GRAPHIC (AIR)

SCALE 1:250,000

CONTOUR INTERVAL APPROXIMATELY 165 FEET

BLUE NUMBERED LINES INDICATE THE 10,000 METER UNIVERSAL TRANSVERSE MERCATOR GRID, ZONE 38, WORLD GEODETIC SYSTEM 1984 ELLIPSOID.

USERS SHOULD REFER TO CORRECTIONS, ADDITIONS, AND COMMENTS TO THE NIMA CUSTOMER HELP DESK: 1-800-455-0899; COMMERCIAL: 314-260-9022; OR WRITE TO: DIRECTOR, NATIONAL IMAGERY AND MAPPING AGENCY, ATTN: CDD, MAIL STOP P-3, 4600 SANGAREE ROAD, BETHESDA, MD 20818-9022.

©COPYRIGHT 2000 BY THE UNITED STATES GOVERNMENT
NO COPYRIGHT CLAIMED UNDER TITLE 17 U.S.C.

CONVERSION OF ELEVATIONS

FEET	METERS	FEET	METERS
100	30	1000	305
200	61	2000	610
300	91	3000	914
400	122	4000	1219
500	152	5000	1524
600	183	6000	1829
700	213	7000	2134
800	244	8000	2438
900	274	9000	2743
1000	305	10000	3048

COORDINATE CONVERSION WGS 84 TO WGS 66
Grid: Subtract 8m E, Add 13m N.
Geographic: Subtract 0.5" Long, Add 0.2" Lat.

COORDINATE CONVERSION WGS 84 TO WGS 72
Grid: Subtract 5m E, Subtract 5m N.
Geographic: Subtract 0.6" Long, Subtract 0.1" Lat.

CONTOUR INTERVAL APPROXIMATELY 165 FEET

GLOSSARY
Oblast first-order administrative division
Stantsiya station

RELIABILITY OF THIS GRAPHIC
(as determined by standard practices)

NOTES
Powerlines are shown except within populated place tints. Other obstructions are shown, if they are 200 feet or more above ground level. See caution note.
On this graphic a lane is generally considered as being 2.5 meters (8 feet) in width.
Road classification should be referred to with caution.
The representation of boundaries is not necessarily authoritative.

GEOREF BASIC 15° QUADRANGLE RK

ELEVATION TINTS

PLOTTING ACCURACY AREA I, II, III

GRAPHIC FEATURE

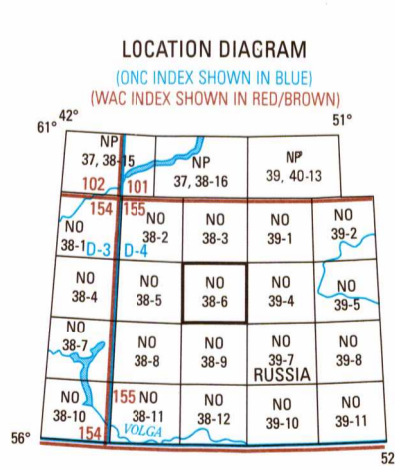
DATE OF INFORMATION

AREA I AREA II AREA III

All other features 1998 1995 1993

Horizontal Datum: World Geodetic System 84
Vertical Datum: Mean Sea Level
Transverse Mercator Projection

NSN 7641014623924
NIMA REF. NO. 1501ANO3806



SCALE 1:250,000
SYAVA, RUSSIA

SERIES 1501 AIR
SHEET NO 38-6
EDITION 1

SERIES 1501 COMPANION SHEET IS EDITION 1

