

SERIES 1501 AIR SHEET NO 38-5 EDITION 1
 SERIES 1501 COMPANION SHEET IS EDITION 2

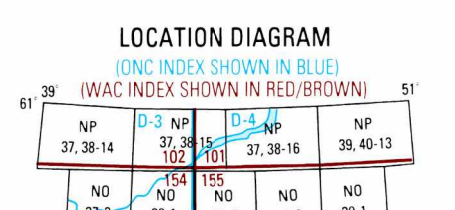
- POPULATED PLACES**
- Over 1,000,000
 - 50,000 to 100,000
 - 10,000 to 50,000
 - 2,000 to 10,000
 - Less than 2,000
- ROADS**
- Dual Highway
 - All weather, hard surface
 - More than two lanes wide
 - Two lanes wide
 - One lane wide
 - All weather, loose or light surface
 - More than two lanes wide
 - Two lanes wide
 - One lane wide
 - Fair or dry weather, loose surface
 - Track or trail
 - Route Marker
- RAILROADS**
- Normal gauge 1.52m (5')
 - Narrow gauge
- BOUNDARIES**
- International
 - First-order administrative division
- OTHER FEATURES**
- Landmark
 - Horizontal control point
 - Levee; Burial mound
 - Mine
 - Dam or lock; Sand
 - Dunes: Crescent, Lateral, Ripple
- VEGETATION**
- Woods
 - Orchard or vineyard
- HYDROGRAPHY**
- Well: Perennial, intermittent
 - Intermittent stream: Single, Double line
 - Disappearing stream: Swamp or marsh
 - Intermittent lake; Land subject to inundation
- TERRAIN ELEVATIONS**
- Spot elevation: normal; critical
 - HIGHEST KNOWN elevation is 754 feet at the following coordinates: Geographic: 58°36'N, 45°16'E Grid: NI 627 ± following elevation value indicates accuracy is not within 100 feet.
- AERODROMES (Military or Civil)**
- Runway pattern known
 - EDNA-Name
 - 50-Length of longest runway to nearest hundreds of feet
 - s-Soft or unimproved surface
 - u-Unknown surface
 - 725-Elevation
 - Runway pattern unknown
- HELIPORT/HELIPAD**
- RADIO FACILITIES**
- VHF OMNI RANGE (VOR)
 - VORTAC
 - TACAN
 - VDR with DME
 - Other facilities
- CONTROLLED AIRSPACE**
- VISUAL AIDS AND OBSTRUCTIONS**
- Obstruction
 - 1108-Elevation of obstruction top, above sea level (259-Elevation of obstruction top, above ground level)
 - Group obstruction
 - Radio facility obstruction
 - Power transmission line
 - Visual ground sign
 - Aero light; Marine light

CAUTION
 Vertical obstructions, including powerlines have been extracted from the most reliable sources available. However, there is no assurance that all are shown, or that their locations or heights are exact.

CAUTION
 AIR INFORMATION CURRENT THROUGH 23 MARCH 2000
 Consult NOTAMS and Flight Information Publications for the latest air information; the NIMA Aeronautical Chart Updating Manual or MOD (UK) Aeronautical Chart Amendment document, for other chart revision information.

LINE OF EQUAL MAGNETIC VARIATION FOR 2000 (Annual rate of change 3' increase.)

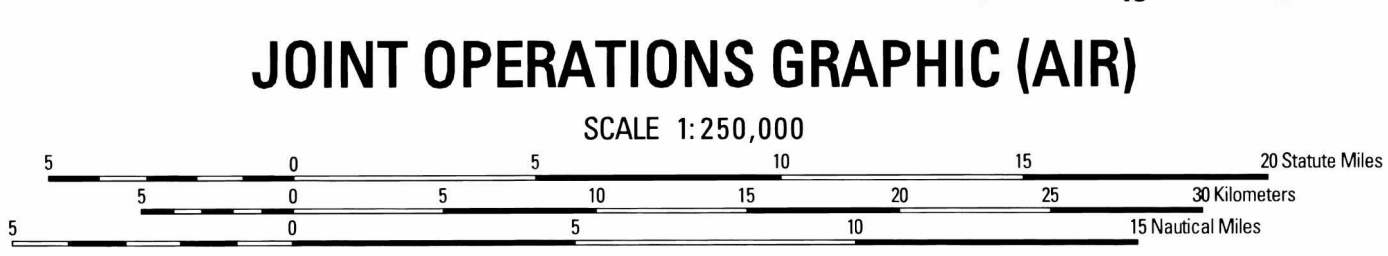
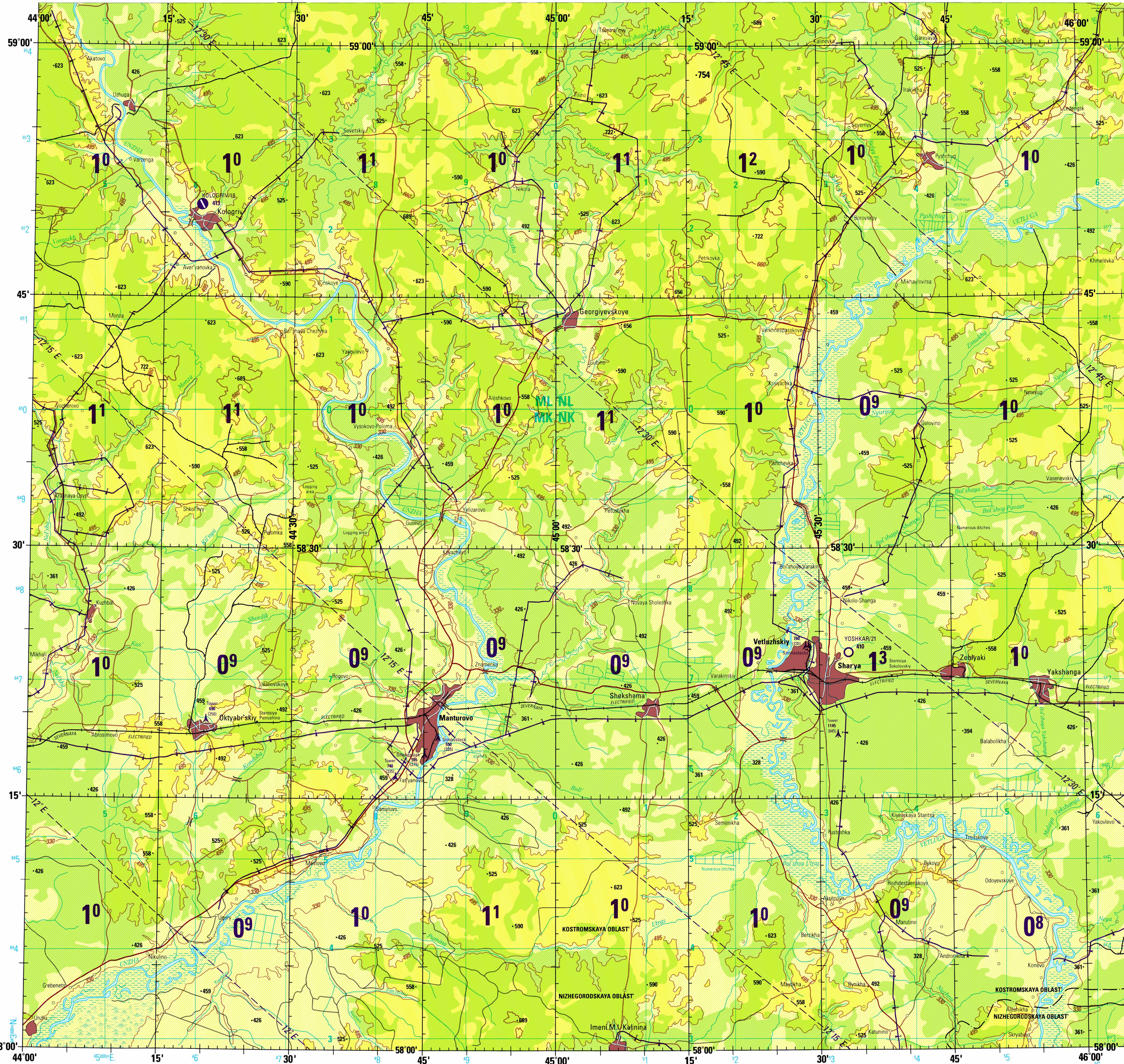
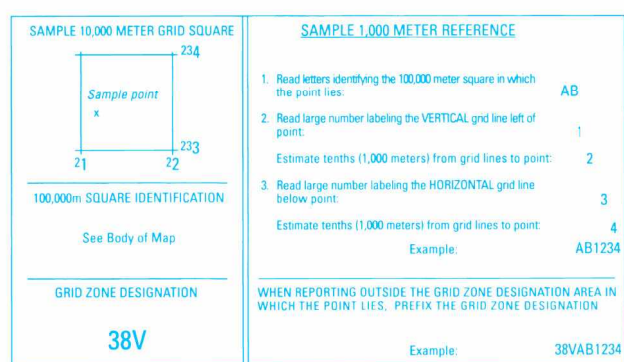
ATTENTION
 THIS CHART CONTAINS MAXIMUM ELEVATION FIGURES (MEF)
 The Maximum Elevation Figures shown in quadrangles bounded by dotted lines of latitude and longitude are represented in THOUSANDS and HUNDREDS of feet above mean sea level. The MEF is based on information available concerning the highest known feature in each coverage, including terrain features, towers, antennas, etc.
 Example: 12,500 feet



Prepared and published by the National Imagery and Mapping Agency. Compiled in November 1998. MAP INFORMATION AS OF MARCH 1998.

CONVERSION OF ELEVATIONS

FEET	METERS	FEET	METERS
100	305	1000	3048
200	274	9000	2743
300	244	8000	2438
400	213	7000	2134
500	183	6000	1829
600	152	5000	1524
700	122	4000	1219
800	91	3000	914
900	61	2000	610
1000	305	1500	457
		1000	305



CONTOUR INTERVAL APPROXIMATELY 165 FEET

BLUE NUMBERED LINES INDICATE THE 10,000 METER UNIVERSAL TRANSVERSE MERCATOR GRID, ZONE 38, WORLD GEODETIC SYSTEM ELLIPSOID.

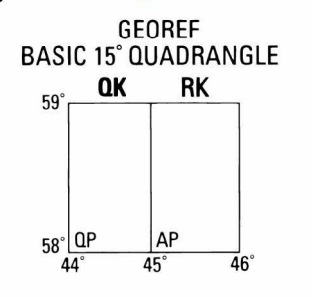
COORDINATE CONVERSION FROM WGS 84 DATUM, WGS 84 ELLIPSOID TO WGS 72 DATUM, WGS 72 ELLIPSOID:
 Grid: Subtract 9m E, Subtract 4m N.
 Geographic: Subtract 0.6" Long, Subtract 0.1" Lat.

USERS SHOULD REFER CORRECTIONS, ADDITIONS, AND COMMENTS TO THE NIMA CUSTOMER HELP DESK: 1-800-456-8888, COMMERCIAL 314-260-8832, USN 490-5032; OR WRITE TO: DIRECTOR, NATIONAL IMAGERY AND MAPPING AGENCY, ATTN: CDD, MARK STOP P-37, 4600 SANGAMORE ROAD, BETHESDA, MD 20816-5003.

COPYRIGHT 2000 BY THE UNITED STATES GOVERNMENT.
 NO COPYRIGHT CLAIMED UNDER TITLE 17 U.S.C.

GLOSSARY

Oblast' first-order administrative division
 Poselok village
 Stantsiya railroad station
 Ra'yezd railroad siding



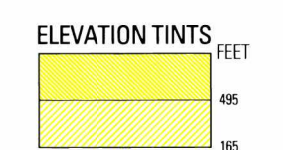
RELIABILITY OF THIS GRAPHIC
 (As determined by standard practices)

PLOTTING ACCURACY % ASSURANCE

Horizontal	± 476 ft
Vertical	± 61 ft

Date of information: 1998

Horizontal Datum: World Geodetic System
 Vertical Datum: Mean-Sea Level
 Transverse Mercator Projection



Printed by the National Imagery and Mapping Agency. 7-00

NOTES

Powerlines are shown except within populated place limits. Other obstructions are shown if they are 200 feet or more above ground level. See caution note.

On this graphic a lane is generally considered as being 8 feet (2.5 meters) in width.

Road classification should be referred to with caution. ALIGNMENT OF ALL BOUNDARIES IS APPROXIMATE.

NAMES AND BOUNDARIES OF ADMINISTRATIVE DIVISIONS IN RUSSIA ARE NOT AVAILABLE.

THE REPRESENTATION OF BOUNDARIES IS NOT NECESSARILY AUTHORITATIVE.

NSN 7541014680475
 NIMA Ref No: 1501AN03805