

SERIES 1501 AIR SHEET NO 38-3 EDITION 1

POPULATED PLACES
 Over 100,000
 50,000 to 100,000
 10,000 to 50,000
 2,000 to 10,000
 Less than 2,000

ROADS
 Dual highway
 All weather, hard surface
 More than two lanes wide
 Two lanes wide
 One lane wide
 All weather, loose or light surface
 More than two lanes wide
 Two lanes wide
 One lane wide
 Fair or dry weather, loose surface
 Cart track
 Road marker

RAILROADS
 Normal gauge: Single track 1.52m (5') Double track
 Normal gauge: Multiple electric
 Narrow gauge: Single track; Double track
 Spur
 Tunnel
 Station position: known; unknown

BOUNDARIES
 International
 First-order administrative division

OTHER FEATURES
 Mine or quarry; Tank
 Bridge
 Horizontal control point
 Marsh or swamp; Land subject to inundation

VEGETATION
 Woods
 TERRAIN ELEVATIONS
 Spot elevation: normal, critical
 HIGHEST KNOWN elevation is 892 feet at the following coordinates:
 Geographic: 59°35'N, 47°17'E
 Grid: PM2907

AERODROMES (Military or Civil)
 Runway pattern known
 EDNA/Name
 50- Length of the longest runway to nearest hundreds of feet
 s- Soft or unimproved surface
 u- Unknown surface
 725- Elevation
 Runway pattern unknown

HELIPORT/HELIPAD
 RADIO FACILITIES
 VHF OMNI RANGE (VOR)
 VORTAC
 TACAN

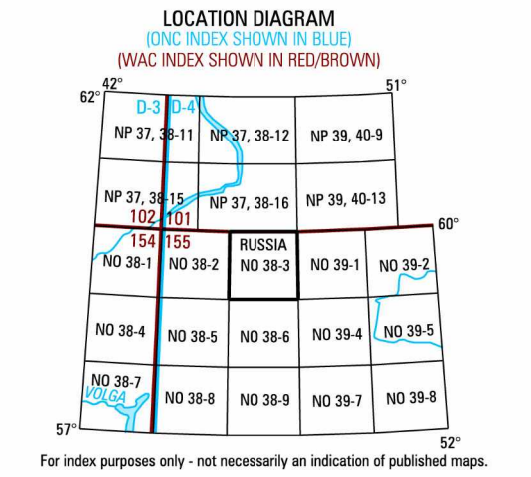
CONTROLLED AIRSPACE
 ADIZ
 VISUAL AIDS AND OBSTRUCTIONS
 Obstruction
 1108- Elevation of obstruction top, above sea level.
 (259)- Elevation of obstruction top, above ground level.
 Group obstruction
 Radio facility obstruction
 Power transmission line
 Visual ground sign
 Aero light; Marine light

CAUTION
 Vertical obstructions, including powerlines, have been extracted from the most reliable sources available. However, there is no assurance that all are shown, or that their locations or heights are exact.

CAUTION
 AIR INFORMATION CURRENT THROUGH NOVEMBER 2000
 Consult NOTAMS and Flight Information Publications for the latest air information; the DOD Aeronautical Chart Updating Manual or MOD (U.K.) Aeronautical Chart Amendment document, for other chart revision information.

LINES OF EQUAL MAGNETIC VARIATION FOR 2000
 (Annual rate of change 3' increase)

ATTENTION
 THIS CHART CONTAINS MAXIMUM ELEVATION FIGURES (MEF)
 The Maximum Elevation Figures shown in quadrangles bounded by ticked lines of latitude and longitude are represented in THOUSANDS and HUNDREDS of feet above mean sea level. The MEF is based on information available concerning the highest known feature in each quadrangle, including terrain and obstructions (trees, towers, antennas, etc.)
 EXAMPLE: 12,500 feet **12⁵**



SCALE 1:250,000
 PAVINO, RUSSIA
 SERIES 1501 AIR SHEET NO 38-3 EDITION 1

Prepared and published by the National Imagery and Mapping Agency
 Compiled September 2000
 MAP INFORMATION AS OF 1999

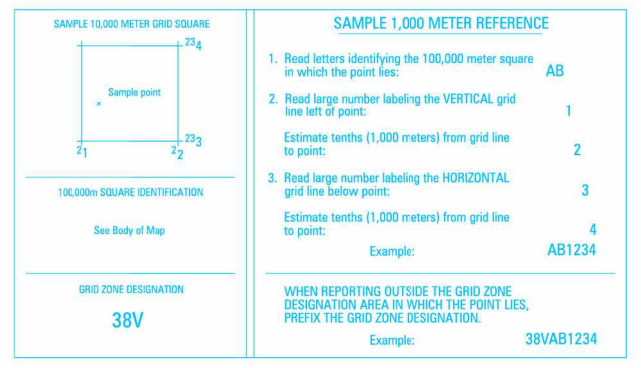


CONVERSION OF ELEVATIONS

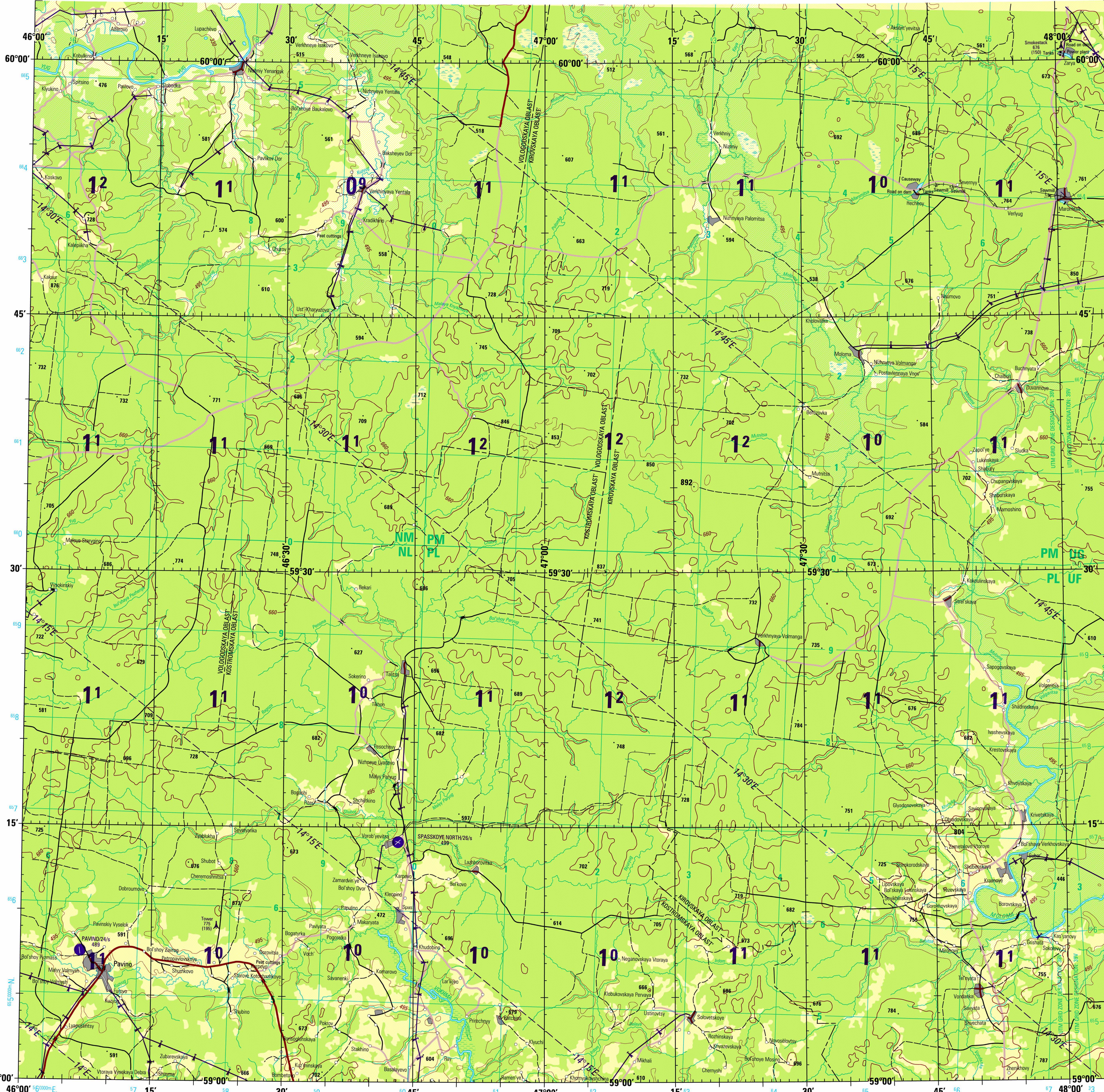
FEET	METERS	FEET	METERS
1000	305	10000	3048
800	274	9000	2743
600	244	8000	2438
400	213	7000	2134
200	183	6000	1829
150	152	5000	1524
100	122	4000	1219
50	15	3000	914
20	6	2000	610
15	4	1500	457
10	3	1000	305

ELEVATIONS IN FEET

COORDINATE CONVERSION WGS 84 TO WGS 72
 Grid: Subtract 8m E, Subtract 5m N
 Geographic: Subtract 0.6" Long, Subtract 0.1" Lat.

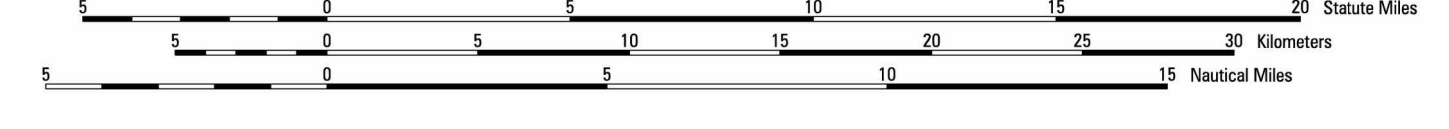


WHEN REPORTING OUTSIDE THE GRID ZONE DESIGNATION AREA IN WORDS THE POINT USE, PREFIX THE GRID ZONE DESIGNATION.
 Example: 38VAB1234



JOINT OPERATIONS GRAPHIC (AIR)

SCALE 1:250,000



CONTOUR INTERVAL APPROXIMATELY 165 FEET

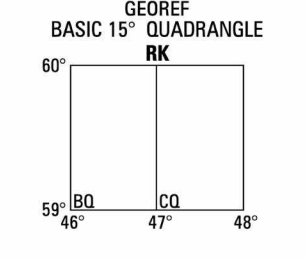
BLUE NUMBERED LINES INDICATE THE 10,000 METER UNIVERSAL TRANSVERSE MERCATOR GRID ZONE 38, WORLD GEODETIC SYSTEM 1984 ELLIPSOID.

USERS SHOULD REFER CORRECTIONS, ADDITIONS, AND COMMENTS TO THE NIMA OPERATIONAL HELP DESK: 1-800-495-9899; COMMERCIAL 314-263-4864; DSN 693-4864; OR WRITE TO: DIRECTOR, NATIONAL IMAGERY AND MAPPING AGENCY, ATTN: ES, MAIL STOP L-48, 4600 SANGAMORE ROAD, BETHESDA, MD 20816-5003.

© COPYRIGHT 2000 BY THE UNITED STATES GOVERNMENT
 NO COPYRIGHT CLAIMED UNDER TITLE 17 U.S.C.

ELEVATIONS IN FEET

GLOSSARY
 Oblast - first-order administrative division



RELIABILITY OF THIS GRAPHIC (as determined by standard practices)

PLOTING ACCURACY 50% ASSURANCE	AREA		
	AREA I	AREA II	AREA III
Horizontal	425 ft.	425 ft.	425 ft.
Contours	95 ft.	95 ft.	95 ft.
DATE OF INFORMATION			
GRAPHIC FEATURE			
Contours	1999	1999	1999
All other features	1999	1999	1999
Graphic net field checked			
Horizontal Datum: World Geodetic System 1984			
Vertical Datum: Mean Sea Level			
Transverse Mercator Projection			

ELEVATION TINTS

FEET
495
165

NOTES
 Powerlines are shown except within populated place tints. Other obstructions are shown, if they are 150 feet or more above ground level. See caution note.
 On this graphic a lane is generally considered as being 8 feet (2.5 meters) in width.
 BOUNDARY REPRESENTATION IS NOT NECESSARILY AUTHORITATIVE.
 ALIGNMENT OF ALL BOUNDARIES IS APPROXIMATE.
 Road classification should be referred to with caution.

NSN 7641014734921
 NIMA Ref No. 1501AN03803
 ED NO 001