

SERIES 1501 AIR SHEET NN 37-10 EDITION 2

- POPULATED PLACES**
- Over 100,000
  - 50,000 to 100,000
  - 10,000 to 50,000
  - 2,000 to 10,000
  - Less than 2,000
- ROADS**
- Dual highway
  - All weather, hard surface
  - More than two lanes wide
  - Two lanes wide
  - One lane wide
  - All weather, loose or light surface
  - More than two lanes wide
  - Two lanes wide
  - One lane wide
  - Fair or dry weather, loose surface
  - Trail
  - Route marker
- RAILROADS**
- Normal gauge: Single track 1.44m (4'8 1/2"); Double track
  - Normal gauge: Multiple electric
  - Narrow gauge: Single track; Double track
  - Spur
  - Tunnel
  - Station position: known; unknown
- BOUNDARIES**
- International
  - First-order administrative division
- OTHER FEATURES**
- Mine or quarry; Tank
  - Bridge
  - Horizontal control point
- VEGETATION**
- Woods
- TERRAIN ELEVATIONS**
- Spot elevation: normal, critical
  - HIGHEST KNOWN ELEVATION is 928 feet at the following coordinates: Geographic: 53°07'N, 37°32'E Grid: DU0273

- AERODROMES (Military or Civil)**
- EDNA/50's
  - Runway pattern known
  - EDNA Name
  - 50' Length of the longest runway to nearest hundreds of feet
  - s-Soft or unimproved surface
  - u-Unknown surface
  - 725-Elevation
  - Runway pattern unknown
- HELIPORT/HELIPAD**
- VOR with DME
  - Other facilities
- RADIO FACILITIES**
- VOR with DME
  - Other facilities
- TACAN**
- TACAN
- CONTROLLED AIRSPACE**
- CONUS ADIZ
- VISUAL AIDS AND OBSTRUCTIONS**
- Obstruction
  - 1108: Elevation of obstruction top, above sea level.
  - (259): Elevation of obstruction top, above ground level.
  - Group obstruction
  - Radio facility obstruction
  - Power transmission line
  - Visual ground sign
  - Aero light; Marine light

**CAUTION**  
Vertical obstructions, including powerlines, have been extracted from the most reliable sources available. However, there is no assurance that all are shown, or that their locations or heights are exact.

**CAUTION**  
**AIR INFORMATION CURRENT THROUGH 5 OCTOBER 2000**  
Consult NOTAMS and Flight Information Publications for the latest air information; the DOD Aeronautical Chart Updating Manual or MOD (UK) Aeronautical Chart Amendment document, for other chart revision information.

**LINE OF EQUAL MAGNETIC VARIATION FOR 1995**  
(Annual rate of change 2' increase)

**ATTENTION**  
**THIS CHART CONTAINS MAXIMUM ELEVATION FIGURES (MEF)**  
The Maximum Elevation Figures shown in quadrangles bounded by ticked lines of latitude and longitude are represented in THOUSANDS and HUNDREDS of feet above mean sea level. The MEF is based on information available concerning the highest known feature in each quadrangle, including terrain and obstructions (trees, towers, antennas, etc.).  
**EXAMPLE: 12,500 feet ..... 12<sup>5</sup>**

**LOCATION DIAGRAM**  
(ONC INDEX SHOWN IN BLUE)  
(WAC INDEX SHOWN IN RED/BROWN)

NN 36-5	NN 36-6	NN 36-7	NN 36-8	NN 36-9	NN 36-10	NN 36-11	NN 36-12
NM 36-5	NM 36-6	NM 36-7	NM 36-8	NM 36-9	NM 36-10	NM 36-11	NM 36-12
NM 36-13	NM 36-14	NM 36-15	NM 36-16	NM 36-17	NM 36-18	NM 36-19	NM 36-20
NM 36-21	NM 36-22	NM 36-23	NM 36-24	NM 36-25	NM 36-26	NM 36-27	NM 36-28
NM 36-29	NM 36-30	NM 36-31	NM 36-32	NM 36-33	NM 36-34	NM 36-35	NM 36-36

For index purposes only - not necessarily an indication of published maps.

Prepared and published by the National Imagery and Mapping Agency  
Compiled June 2000

MAP INFORMATION AS OF 1995

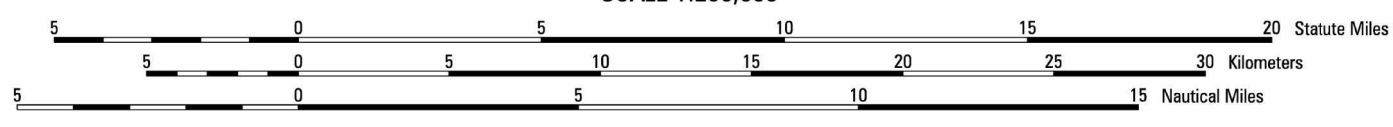
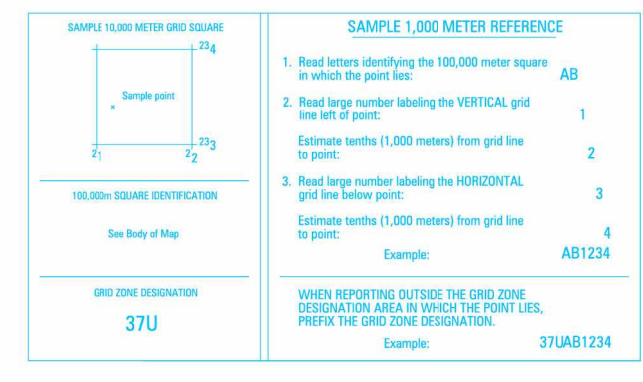


**CONVERSION OF ELEVATIONS**

FEET	METERS	FEET	METERS
1000	305	10000	3048
900	274	9000	2743
800	244	8000	2438
700	213	7000	2134
600	183	6000	1829
500	152	5000	1524
400	122	4000	1219
300	91	3000	914
200	61	2000	610
100	31	1000	305

**COORDINATE CONVERSION WGS84 TO WGS72**  
Grid: Subtract 10m.E., Subtract 4m.N.  
Geographic: Subtract 0.6" Long., Subtract 0.1" Lat.

**COORDINATE CONVERSION WGS84 TO ED50**  
Grid: Add 21m.E., Add 181m.N.  
Geographic: Add 1.4" Long., Add 1.9" Lat.



**JOINT OPERATIONS GRAPHIC (AIR)**

SCALE 1:250,000

CONTOUR INTERVAL APPROXIMATELY 70 FEET

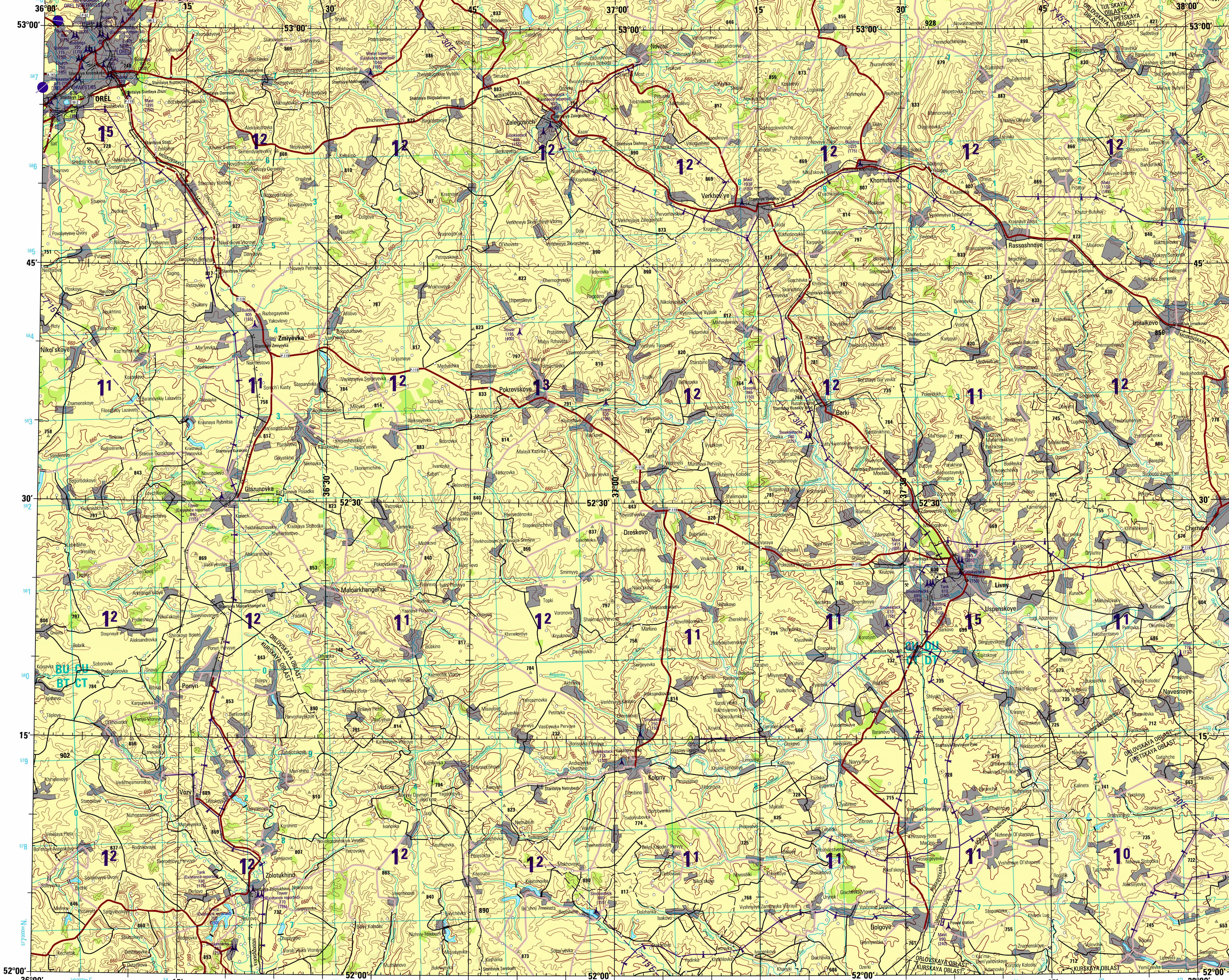
BLUE NUMBERED LINES INDICATE THE 10,000 METER UNIVERSAL TRANSVERSE MERCATOR GRID ZONE 97, WORLD GEODEIC SYSTEM 1984 ELLIPSOID.

USERS SHOULD REFER CORRECTIONS, ADDITIONS, AND COMMENTS TO THE NIMA OPERATIONAL HELP DESK: 1-800-455-9898, COMMERCIAL 314-263-4864, OR WRITE TO: DIRECTOR, NATIONAL IMAGERY AND MAPPING AGENCY, ATTN: IS, MAIL STOP L-88, 4880 SANGAMORE ROAD, BETHESDA, MD 20816-5003.

© COPYRIGHT 2000 BY THE UNITED STATES GOVERNMENT  
NO COPYRIGHT CLAIMED UNDER TITLE 17 U.S.C.

SCALE 1:250,000

SERIES 1501 AIR SHEET NN 37-10 EDITION 2



**NOTES**  
Powerlines are shown except within populated place limits. Other obstructions are shown if they are 150 feet or more above ground level. See caution note.  
On this graphic a lane is generally considered as being 8 feet (2.5 meters) in width.  
BOUNDARY REPRESENTATION IS NOT NECESSARILY AUTHENTICATIVE.  
ALIGNMENT OF ALL BOUNDARIES IS APPROXIMATE.  
Road classification should be referred to with caution.

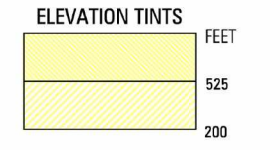
**RELIABILITY OF THIS GRAPHIC**  
(as determined by standard practices)

I	II
III	IV

**PLOTTING ACCURACY 50% ASSURANCE**

GRAPHIC FEATURE	DATE OF INFORMATION	AREA I	AREA II	AREA III
Horizontal	within 500 ft.	within 500 ft.	within 500 ft.	within 500 ft.
Vertical	within 50 ft.	within 50 ft.	within 50 ft.	within 50 ft.

All other features: 1995 1998 1998 1998 1998



**GLOSSARY**  
Obst.: first-order administrative division  
Stantsiya: railroad station