

SERIES 1501 AIR SHEET NN 37-4 EDITION 2

SERIES 1501 COMPANION SHEET IS EDITION 4

POPULATED PLACES

Over 100,000
50,000 to 100,000
10,000 to 50,000
2,000 to 10,000
Less than 2,000

MOSKVA
KUMERTAU
Okha
Kuva
Klerk

ROADS

Dual highway
All weather, hard surface
More than two lanes wide
Two lanes wide
One lane wide

All weather, loose or light surface
More than two lanes wide
Two lanes wide
One lane wide

Fair or dry weather, loose surface
Cart track
Rocks marker

RAILROADS

Normal gauge: Single track 1.52m (5') Double track
Normal gauge: Multiple electric
Narrow gauge: Single track Double track
Spur
Tunnel
Station position: known; unknown

BOUNDARIES

International
First-order administrative division

OTHER FEATURES

Mine or quarry; Landmark; Tanks
Bridge
Horizontal control point

VEGETATION

Woods; Orchard

TERRAIN ELEVATIONS

Spot elevation: normal, critical
HIGHEST KNOWN elevation is 948 feet at the following coordinates:
Geographic: 54°26'N, 37°35'E
Grid: DA0834

AERODROMES (Military or Civil)

EDNA/50's
Runway pattern known
EDNA Name
50' Length of the longest runway to nearest hundreds of feet
s-Soft or unimproved surface
u-Likewise surface
725-Elevation
Runway pattern unknown

HELIPORT/HELIPAD

RADIO FACILITIES

VHF OMNI RANGE (VOR)
VORTAC
TACAN

CONTROLLED AIRSPACE

ADIZ
CONUS ADIZ

VISUAL AIDS AND OBSTRUCTIONS

Obstruction
1108 - Elevation of obstruction top, above sea level.
(259) - Elevation of obstruction top, above ground level.

Group obstruction
Radio facility obstruction
Power transmission line
Visual ground sign
Aero light; Marine light

CAUTION

Vertical obstructions, including powerlines, have been extracted from the most reliable sources available. However, there is no assurance that all are shown, or that their locations or heights are exact.

CAUTION

AIR INFORMATION CURRENT THROUGH 9 MAY 2001

Consult NOTAMS and Flight Information Publications for the latest air information; the NIMA Aeronautical Chart Updating Manual or MOD (U.K.) Aeronautical Chart Amendment document; for other chart revision information.

ATTENTION

THIS CHART CONTAINS MAXIMUM ELEVATION FIGURES (MEF)

The Maximum Elevation Figures shown in quadrangles bounded by ticked lines of latitude and longitude are represented in THOUSANDS and HUNDREDS of feet above mean sea level. The MEF is based on information available concerning the highest known features in each quadrangle, including terrain and obstructions (trees, towers, antennas, etc.)

EXAMPLE: 12,500 feet **125**

LOCATION DIAGRAM

(MAG INDEX SHOWN IN BLUE)
(MAG INDEX SHOWN IN RED/BROWN)

NO 36-11	NO 36-12	NO 36-13	NO 36-14
NO 36-15	NO 36-16	NO 36-17	NO 36-18
NO 36-19	NO 36-20	NO 36-21	NO 36-22

RUSSIA
BELARUS
UKRAINE

Prepared and published by the National Imagery and Mapping Agency
Compiled January 2001

MAP INFORMATION AS OF 1995

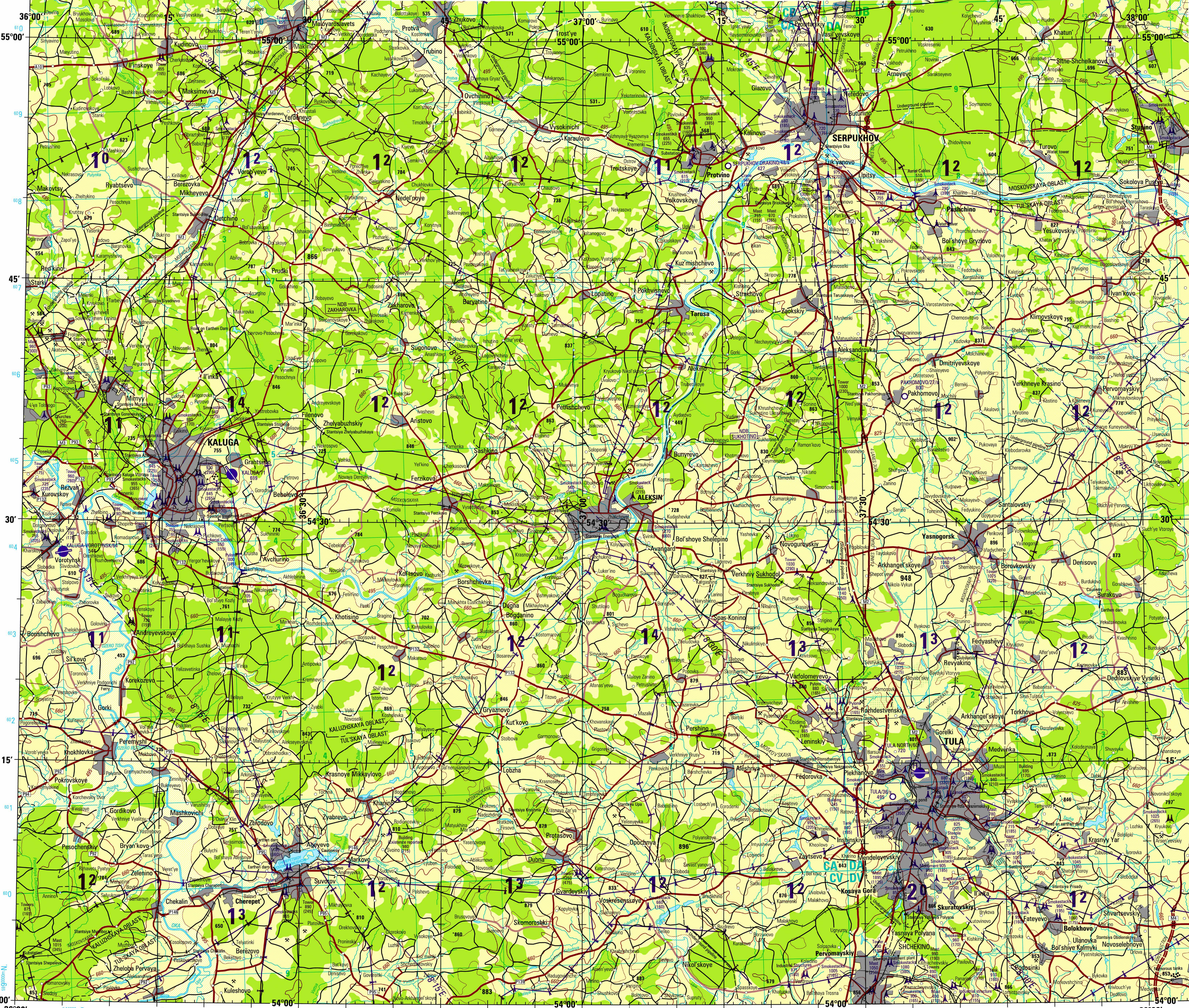
COORDINATE CONVERSION WGS 84 TO WGS 72 Grid: Subtract 10m E, Subtract 4m N, Geographic: Subtract 0.6" Long, Subtract 0.1" Lat.

COORDINATE CONVERSION WGS 84 TO ED 50 Grid: Add 21m E, Add 184m N, Geographic: Add 1.4" Long, Add 1.7" Lat.

CONVERSION OF ELEVATIONS

FEET	METERS	FEET	METERS
1000	305	10000	3048
900	274	9000	2743
800	244	8000	2438
700	213	7000	2133
600	183	6000	1829
500	152	5000	1524
400	122	4000	1219
300	91	3000	914
200	61	2000	610
100	31	1000	305

SCALE 1:250,000
TULA, RUSSIA
SERIES 1501 AIR SHEET NN 37-4 EDITION 2
SERIES 1501 COMPANION SHEET IS EDITION 4



JOINT OPERATIONS GRAPHIC (AIR)
SCALE 1:250,000

ELEVATIONS IN FEET

STATUTE MILES
NAUTICAL MILES

CONTOUR INTERVAL APPROXIMATELY 165 FEET

BLUE NUMBERED LINES INDICATE THE 10,000 METER UNIVERSAL TRANSVERSE MERCATOR GRID, ZONE 37, WORLD GEODETIC SYSTEM 1984 ELLIPSOID.

GLOSSARY

Obst: first order administrative division
Oros: lake
Stantsiya: railroad station
Vocovoznitshe: reservoir

RELIABILITY OF THIS GRAPHIC
(as determined by standard practices)

PLOTTING ACCURACY 90% ASSURANCE	AREA I		AREA II	
	Horizontal	Vertical	Horizontal	Vertical
Contours	425 ft.	425 ft.	425 ft.	395 ft.

GRAPHIC FEATURE

GRAPHIC FEATURE	AREA I (AREA II) AREA III	
	2000	1992
Contours	2000	1992

Horizontal Datum: World Geodetic System 1984
Vertical Datum: Mean Sea Level
Transverse Mercator Projection

ELEVATION TINTS

485
165

NOTES

Powerlines are shown except within populated place limits. Other obstructions are shown, if they are 150 feet or more above ground level. See caution note.

CAUTION: POWER TRANSMISSION LINES INDICATED WITH THE VERTICAL OBSTRUCTION SYMBOL, RANGES FROM 700 TO 100 FEET IN HEIGHT ABOVE SEA LEVEL OR 165 FEET IN HEIGHT ABOVE GROUND LEVEL OVER THE ENTIRE SHEET.

On this graphic a lane is generally considered as being 8 feet (2.5 meters) in width.

BOUNDARY REPRESENTATION IS NOT NECESSARILY AUTHORITY. ALIGNMENT OF ALL BOUNDARIES IS APPROXIMATE. DEPICTION OF INTERNATIONAL BOUNDARIES HAS CHANGED SINCE THE LAST EDITION. Road classification should be referred to with caution. IN BUILT UP AREAS, ONLY THROUGH ROUTES ARE CLASSIFIED.

© COPYRIGHT 2001 BY THE UNITED STATES GOVERNMENT
NO COPYRIGHT CLAIMED UNDER TITLE 17 U.S.C.

NSN 7641014640792
NIMA Ref No: 1501ANN3704