

SERIES 1501 AIR SHEET NM 38-10 EDITION 2

COMPANION SERIES 1501 SHEET IS EDITION 1

LEGEND

- POPULATED PLACES**
- Over 100,000 **KHABAROVSK**
 - 50,000 to 100,000 **SVOBODNYI**
 - 10,000 to 50,000 **BIROBIDZHAN**
 - 2,000 to 10,000 **Sikhovno**
 - Less than 2,000 **Tabo**
- ROADS**
- All weather, hard surface
 - Two or more lanes wide
 - One lane wide
 - All weather, loose or light surface
 - Two or more lanes wide
 - One lane wide
 - Fair or dry weather, loose surface
 - Track or trail
- RAILROADS**
- Normal gauge, 1.52 m (5')
 - Narrow gauge
 - Station location: Exact/Approximate
- BOUNDARIES**
- International
 - Interterritorial
 - Primary administrative
 - Secondary administrative
 - Reservation
- OTHER FEATURES**
- Landmark
 - Horizontal control point
 - Levee

- VEGETATION**
- Wood-bushwood
- HYDROGRAPHY**
- Swamp or marsh
 - Rock: Sunken; Awash
 - Wreck: Sunken; Exposed
 - Limit of danger; Reef
 - Forecast: Rip; Salt evaporator
 - Depth contours in fathoms

TERRAIN ELEVATIONS

Spot elevation: Normal; Critical

HIGHEST KNOWN elevation is 735 feet at the following coordinates:

Geographic: 49°01'N, 43°28'E

Grid: LV8831

AERODROMES (Military or Civil)

Runway pattern known

EDNA-Name

50-Length of longest runway to nearest hundreds of feet

a-Soft or unimproved surface

u-Unknown surface

72-Elevation

Runway pattern unknown

HELIPORT/HELIPAD

RADIO FACILITIES

VHF OMNI RANGE (VOR)

VORTAC

TACAN

VOR WITH DME

Other facilities

CONTROLLED AIRSPACE

ADIZ

VISUAL AIDS AND OBSTRUCTIONS

Obstruction

1108-Elevation of obstruction top, above sea level

(29)-Elevation of obstruction top, above ground level

Group obstruction

Radio facility obstruction

Power transmission line

Visual ground sign

Aero light; Marine light

CAUTION

Vertical obstructions, including powerlines, have been extracted from the most reliable sources available. However, there is no assurance that all are shown, or that their locations or heights are exact.

CAUTION

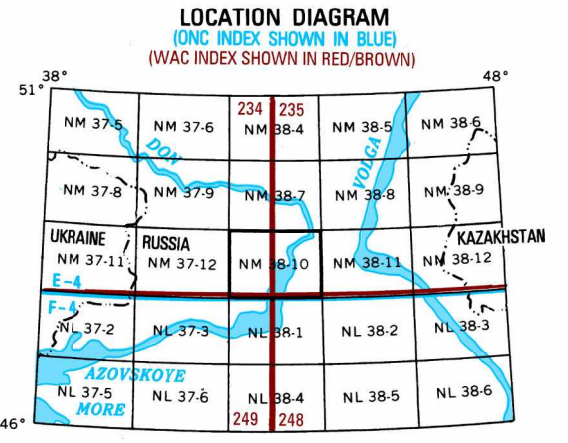
AIR INFORMATION CURRENT THROUGH 23 SEPTEMBER 1999
Consult NOTAMS and Flight Information Publications for the latest air information; the NIMA Aeronautical Chart Updating Manual or MOD (U.K.) Aeronautical Chart Amendment document, for other chart revision information.

LINES OF EQUAL MAGNETIC VARIATION FOR 1995
(Annual rate of change 1° increase)

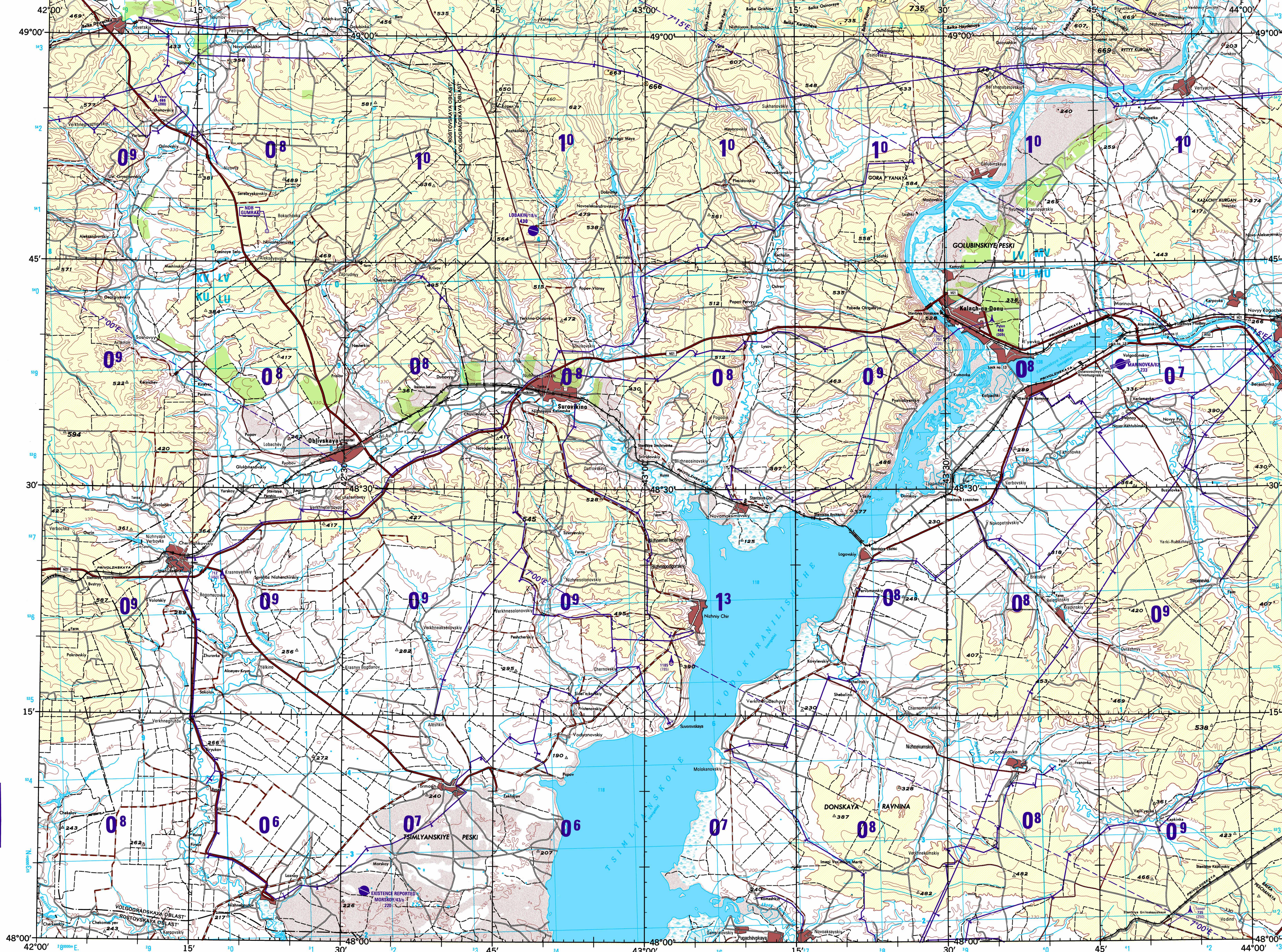
ATTENTION

THIS CHART CONTAINS MAXIMUM ELEVATION FIGURES (MEF)
The Maximum Elevation Figures shown in quadrangles bounded by dotted lines of latitude and longitude are represented by THOUSANDS and HUNDREDS of feet above mean sea level. The MEF is based on information concerning the highest known feature in each quadrangle, including terrain and obstructions (towers, antennas, etc.).

EXAMPLE: 12,000 feet **12⁵**

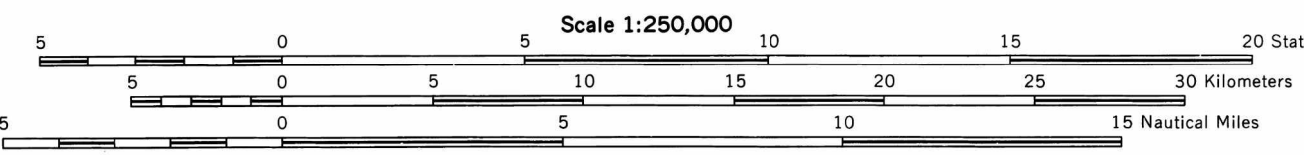


SCALE: 1:250,000
KALACH-NA-DONU, RUSSIA
SERIES 1501 AIR SHEET NM 38-10 EDITION 2
COMPANION SERIES 1501 SHEET IS EDITION 1



Prepared and published by the National Imagery Mapping Agency, Compiled 1988. Revised February, 1999. MAP INFORMATION AS OF 1998

JOINT OPERATIONS GRAPHIC (AIR)



CONTOUR INTERVAL APPROXIMATELY 70 FEET
BLUE NUMBERED LINES INDICATE THE 10,000 METER UNIVERSAL TRANSVERSE MERCATOR GRID, ZONE 38, WORLD GEODETIC SYSTEM ELLIPSOID.

COORDINATE CONVERSION WGS 84 TO WGS 72: GRID: Subtract 11m E., Subtract 4m N. Geographic: Subtract 0° Long., Subtract 1° Lat.
COORDINATE CONVERSION WGS 84 TO ED 50: GRID: Add 7m E., Add 173m N. Geographic: Add 0° Long., Add 2° Lat.

© COPYRIGHT 2000 BY THE UNITED STATES GOVERNMENT. NO COPYRIGHT CLAIMED UNDER TITLE 17 U.S.C.

RELIABILITY OF THIS GRAPHIC (as determined by standard practices)

PLOTTING ACCURACY	BY ASSURANCE		
	AREA I	AREA II	AREA III
Horizontal	within 800 ft	within 400 ft	within 200 ft
Vertical	within 30 ft	within 15 ft	within 10 ft

GRAPHIC FEATURE DATE OF INFORMATION

Man-made features	1987	1988-1994/1995-1998
Vegetation	1987	1988-1994/1995-1998
Contours	1988	1989
All other features	1987	1988-1994/1995-1998

Vertical Datum: Mean Sea Level
Horizontal Datum: World Geodetic System 1984
Vertical Datum: Mean Sea Level
Transverse Mercator Projection

GEOREF BASIC 15° QUADRANGLE QK

CONVERSION OF ELEVATIONS			
FEET	METERS	FEET	METERS
800	274	1000	3048
900	274	9000	2743
700	213	8000	2438
600	183	7000	2134
500	152	6000	1829
400	122	5000	1524
300	91	4000	1219
200	61	3000	914
100	31	2000	610
50	15	1500	457
0	0	1000	305

ELEVATION TINTS

FEET	BSL
640	
330	
BSL	

NOTES: Powerlines are shown except within populated place limits. Other obstructions are shown if they are 200 feet or more above ground level. See caution note.

On this graphic a lane is generally considered as being 8 feet (2.5 meters) in width. BOUNDARY REPRESENTATION IS NOT NECESSARILY AUTHORITY. Depiction of international boundaries has changed since the last edition. Road classification should be referred to with caution.

Lithographed by NIMA 07-90
NSN 7641014551096
NIMA Ref No. 1501ANM3810
ED. NO. 002