

SERIES 1501 AIR SHEET NM 36-12 EDITION 2

POPULATED PLACES
 Over 100,000
 50,000 to 100,000
 10,000 to 50,000
 2,000 to 10,000

ROADS
 Dual highway
 All weather, hard surface
 More than two lanes wide
 Two lanes wide
 One lane wide
 All weather, loose or light surface
 More than two lanes wide
 Two lanes wide
 One lane wide
 Fair or dry weather, loose surface
 Track or trail
 Route marker

RAILROADS
 Normal gauge 1.52m (5')
 Single track
 Multiple track
 Narrow gauge

BOUNDARIES
 International
 Interterritorial or intersectoral, autonomous zone
 First-order administrative division
 Reservation

OTHER FEATURES
 Landmark
 Horizontal control point
 Levee; Burial mound
 Mine
 Dam or lock; Sand
 Dunes; Crescent; Lateral; Ripple

VEGETATION
 Woods
 Orchard or vineyard

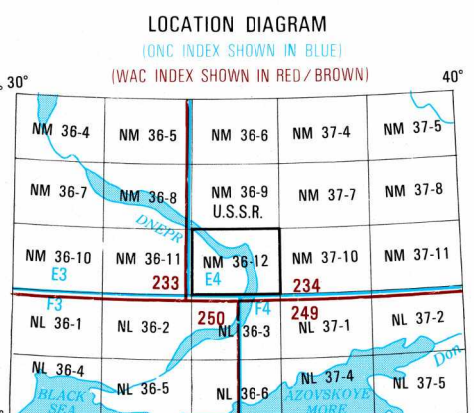
HYDROGRAPHY
 Well; Perennial; Intermittent
 Intermittent streams: Single; Double line
 Disappearing stream; Swamp or marsh
 Intermittent lake; Dry lake

TERRAIN ELEVATIONS
 Spot elevation: normal; critical
 HIGHEST KNOWN elevation is 643 feet at the following coordinates
 Geographic: 48°05'N 35°34'E
 Grid: XG1912 B
 ± following elevation value indicates accuracy is not within 1/2 contour interval

AERODROMES (Military or Civil)
 Field limits with runway pattern
 EDNA Name
 50 Length of longest runway to nearest hundreds of feet
 S-Soft or unimproved surface
 W-Unknown surface
 725 Elevation
 Field limits, with runway pattern unknown
 Field limits unknown, with runway pattern
 Field limits and runway pattern unknown

HELIPORT
 RADIO FACILITIES
 RADIO RANGE LF/MF
 MULTIPLE RADIO FACILITIES
 CONTROLLED AIRSPACE
 ADIZ
 ATLANTIC ADIZ

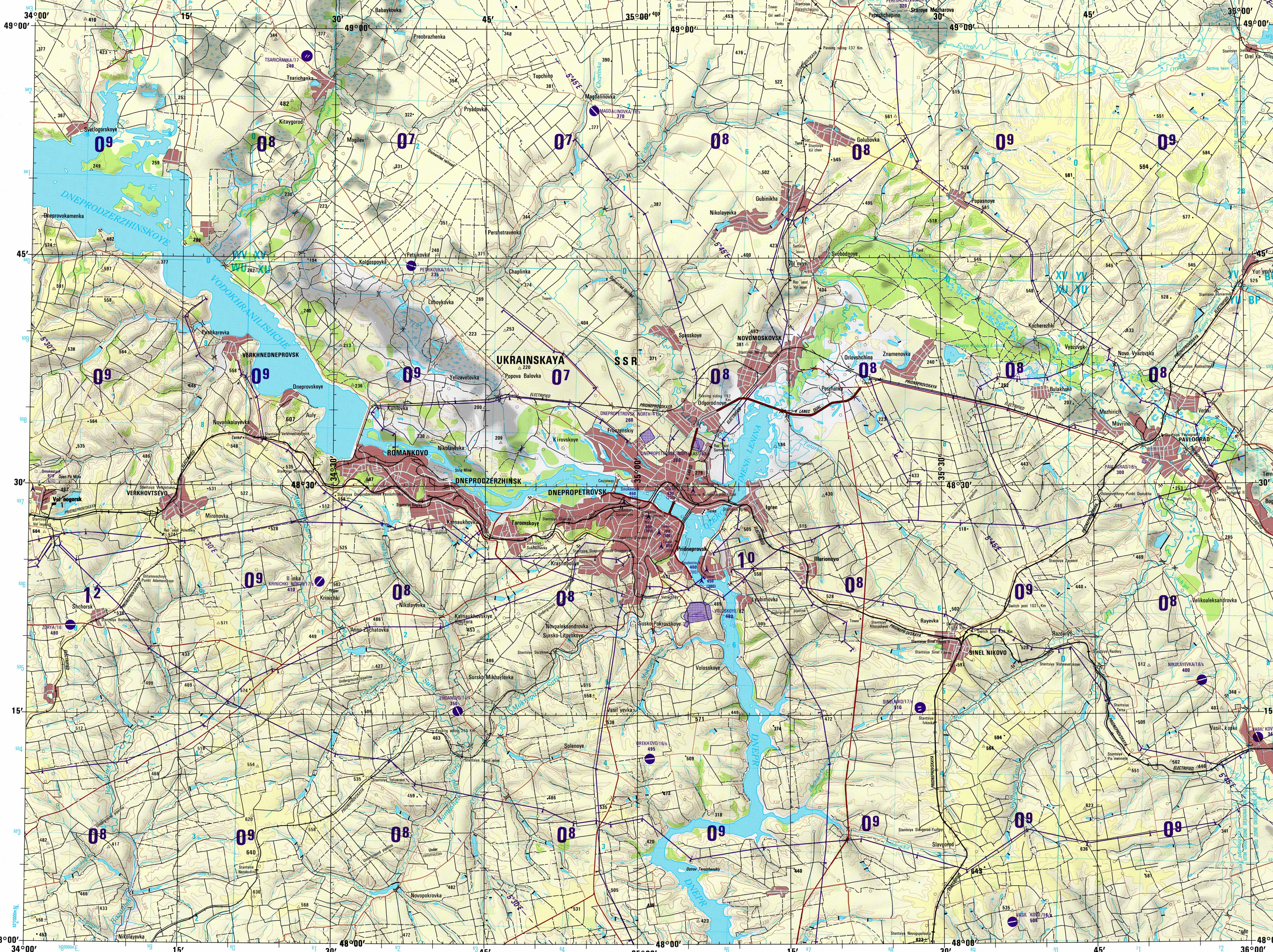
VISUAL AIDS AND OBSTRUCTIONS
 Obstruction
 1108 - Elevation of obstruction top, above sea level
 1259 - Elevation of obstruction top, above ground level
 Group obstruction
 Radio facility obstruction
 Power transmission line
 Visual ground sign
 Aero light; Marine light



SCALE 1:250,000
 DNEPROPETROVSK, U.S.S.R.
 SERIES 1501 AIR SHEET NM 36-12 EDITION 2
 SERIES 1501 COMPANION SHEET IS EDITION 2

CAUTION
 AIR INFORMATION CURRENT THROUGH 30 JULY 1981
 Consult NOTAMS and Flight Information Publications for the latest air information; the DOD Aeronautical Chart Updating Manual or MOD (U.K.) Aeronautical Chart Amendment document, for other chart revision information.
 LINES OF EQUAL MAGNETIC VARIATION FOR 1980 (Annual rate of change 3' increase)

ATTENTION
 THIS CHART CONTAINS MAXIMUM ELEVATION FIGURES (MEF)
 The Maximum Elevation Figures shown in quadrangles bounded by ticked lines of latitude and longitude are presented in HIGHLIGHTS and HIGHLIGHTS are first above mean sea level. The MEF is based on information available concerning the highest known features in each quadrangle, including terrain and obstructions (trees, towers, antennas, etc.). In areas of extensive unreliable relief, the MEF is shown by a note speed across the area.
 EXAMPLE: 1250 feet
125

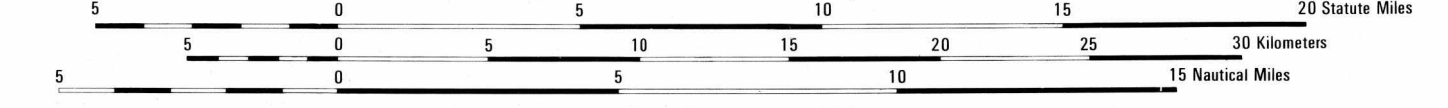


Prepared and published by the Defense Mapping Agency Hydrographic/Topographic Center, Washington, D. C. Compiled March 1979.

ELEVATIONS IN FEET

JOINT OPERATIONS GRAPHIC (AIR)

SCALE 1:250,000



CONTOUR INTERVAL APPROXIMATELY 70 FEET

FOR REFERENCING, GRID AND GEOGRAPHIC VALUES MAY BE CONSIDERED AS EITHER EUROPEAN OR WORLD GEODETIC SYSTEM DATUM SINCE POSITION PLACING DIFFERENCES ARE NOT SIGNIFICANT AT THIS SCALE.
 BLUE NUMBERED LINES INDICATE THE 10,000 METER UNIVERSAL TRANSVERSE MERCATOR GRID, ZONE 38, WORLD GEODETIC SYSTEM SPHEROID
 USERS SHOULD REFER CORRECTIONS, ADDITIONS, AND COMMENTS TO THE NGA OPERATIONAL HELP DESK: 1-800-455-6885 COMMERCIAL 314-263-4864; TSN 1683-4864; OR WRITE TO: DIRECTOR, NATIONAL GEOSPATIAL INTELLIGENCE AGENCY, ATTN: E.S. MAIL STOP 1-68, 4801 SANGAMORE ROAD, BETHESDA, MD 20815-5003.
 (U.K. Users: Directorate of Military Survey, Ministry of Defence, London)

GLOSSARY

More
 "Globe"
 Ostanovochny Punkt
 Ostrov
 Ozerny
 Raz'ezd
 Raz'ezd
 S.S.R.
 Stanitsya
 Volskranitschische

Sea
 second-order administrative division
 ship
 lake
 passing siding
 first-order administrative division
 station
 reservoir

ELEVATION TINTS

FEET	METERS
525	160
200	61
85	26

CONVERSION OF ELEVATIONS

FEET	METERS	FEET	METERS
1000	305	10000	3048
900	274	9000	2743
800	244	8000	2438
700	213	7000	2134
600	183	6000	1829
500	152	5000	1524
400	122	4000	1219
300	91	3000	914
200	61	2000	610
150	46	1500	457
100	31	1000	305

NOTES
 Only obstructions 200 feet or more above ground level are shown. Names for symbolized populated places are omitted where information is not available or where density of detail does not permit their inclusion.
 A lane is considered to be a minimum of 8 feet (2.5 meters) in width. Road classification should be referred to with caution.
 Alignment of all boundaries is approximate.
 The reliability of vegetation information is undetermined. Provenience information and obstructions have been extracted from the most reliable source available. However there is no assurance that all powerlines and obstructions are shown or that their locations and heights are correct.

RELIABILITY OF THIS GRAPHIC
 Compiled from best available source materials.
 Horizontal Datum: World Geodetic System
 Vertical Datum: Mean Sea Level
 Transverse Mercator Projection

NSN 7641014101699
 NGA Ref No 1501ANM3612
 ED. NO. 002