

SERIES 1501 AIR
SHEET NM 36-10
EDITION 3

NO COMPANION SHEET EXISTS

POPULATED PLACES

- Over 100,000 MOSKVA
- 50,000 to 100,000 KLIMOVSK
- 10,000 to 50,000 Obukhovo
- 2,000 to 10,000 Kubinka
- Less than 2,000 Dubosy

ROADS

- Dual highway 4 LANES DUAL
- All weather, hard surface More than two lanes wide 4 LANES
- Two lanes wide 2 LANES
- One lane wide 1 LANE
- All weather, loose or light surface More than two lanes wide 3 LANES
- Two lanes wide 2 LANES
- One lane wide 1 LANE
- Fair or dry weather, loose surface
- Cart track
- Footpath, trail
- Route marker

RAILROADS

- Normal gauge single track 1.44m (4'7 1/2") Double track
- Narrow gauge

BOUNDARIES

- International
- First-order administrative

OTHER FEATURES

- Area name UMAN'
- Mine or quarry
- Campsite, Ruins, Watermill
- School, Church, Landmark
- Mosque, Moslem shrine
- Small reservoir or cistern
- Well, Perennial, Intermittent, Spring
- Underground aqueduct with shafts
- Sakha or Dry lake; Intermittent lake
- Single line intermittent stream, Wadi
- Marsh or swamp, Land subject to inundation

VEGETATION

- Woods, brushwood

TERRAIN ELEVATIONS

- Spot elevation, normal, critical
- HIGHEST KNOWN elevation is 869 feet at the following coordinates: 48°55' N, 30°13' E.

AERODROMES (Military or Civil)

- Runway pattern known EDNA/50's 725
- EDNA/Name
- 50-Length of longest runway to nearest hundreds of feet
- Soft or unimproved surface
- Unknown surface
- 725-Elevation
- Runway pattern unknown

HELIPORT/HELIPAD

RADIO AIDS TO NAVIGATION

- VHF OMNI RANGE (VOR)
- VORTAC
- TACAN
- VOR WITH DME
- Other facilities

RADIO FACILITIES

- RADIO RANGE LF/MF
- MULTIPLE RADIO FACILITIES

VISUAL AIDS AND OBSTRUCTIONS

- Obstruction 1108-Elevation of obstruction top, above sea level. (259)-Elevation of obstruction top, above ground level.
- Group obstruction
- Radio facility obstruction
- Power transmission line

ATTENTION

THIS CHART CONTAINS MAXIMUM ELEVATION FIGURES (MEF)

The Maximum Elevation Figures shown in quadrangles bounded by ticked lines of latitude and longitude are represented in THOUSANDS and HUNDREDS of feet above mean sea level. The MEF is based on information available concerning the highest known feature in each quadrangle, including terrain and obstructions (towers, antennas, etc.).

EXAMPLE: 12,500 feet **125**

CAUTION

AIR INFORMATION CURRENT THROUGH 14 OCTOBER 1999

Consult NOTAMS and Flight Information Publications for the latest air information, the NIMA Aeronautical Chart Updating Manual or MOD (U.K.) Aeronautical Chart Amendment document, for other chart revision information.

LINES OF EQUAL MAGNETIC VARIATION FOR 1995 (Annual rate of change 2' increase)

CAUTION

Vertical obstructions, including powerlines, have been extracted from the most reliable sources available. However, there is no assurance that all are shown, or that their locations or heights are exact.

LOCATION DIAGRAM

Boundary Representation is Not Necessarily Authoritative. (ICNC INDEX SHOWN IN BLUE) (WAC INDEX SHOWN IN RED/BROWN)

NM 35-5	NM 35-6	NM 35-4	RUSSIA	NM 36-10
NM 35-8	NM 35-9	NM 35-7	UKRAINE	NM 36-9
NM 35-11	NM 35-12	NM 35-10	NM 36-11	NM 36-12
NL 35-2	NL 35-3	NL 35-1	250 249	NL 35-3
ROMANIA	NL 35-5	NL 35-4	NL 35-5	NL 35-4



Prepared and published by the National Imagery and Mapping Agency
Compiled March 1999
MAP INFORMATION AS OF 1998

CONVERSION OF ELEVATIONS

FEET	METERS	FEET	METERS
1000	305	10000	3048
900	274	8000	2438
800	244	7000	2134
700	213	6000	1829
600	183	5000	1524
500	152	4000	1219
400	122	3000	914
300	91	2000	610
200	61	1500	457
150	46	1000	305
100	31		

COORDINATE CONVERSION WGS 84 TO WGS 72
GRID: SUBTRACT 11m. E., SUBTRACT 4m. N.
GEOGRAPHIC: SUBTRACT 0° LONG., SUBTRACT 0° LAT.

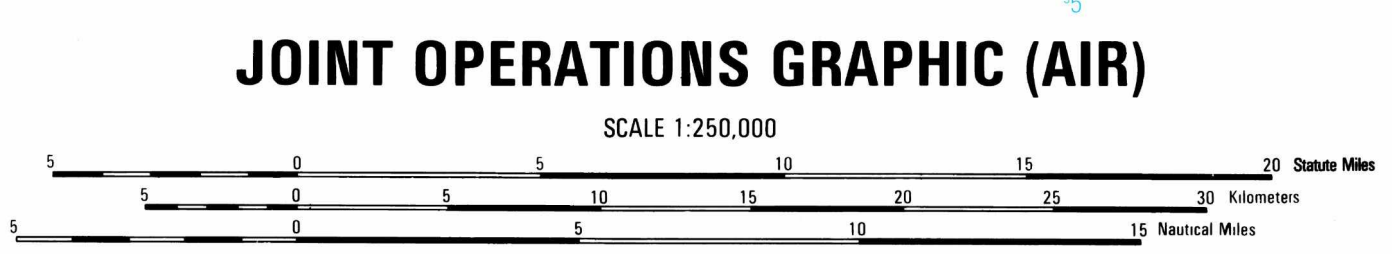
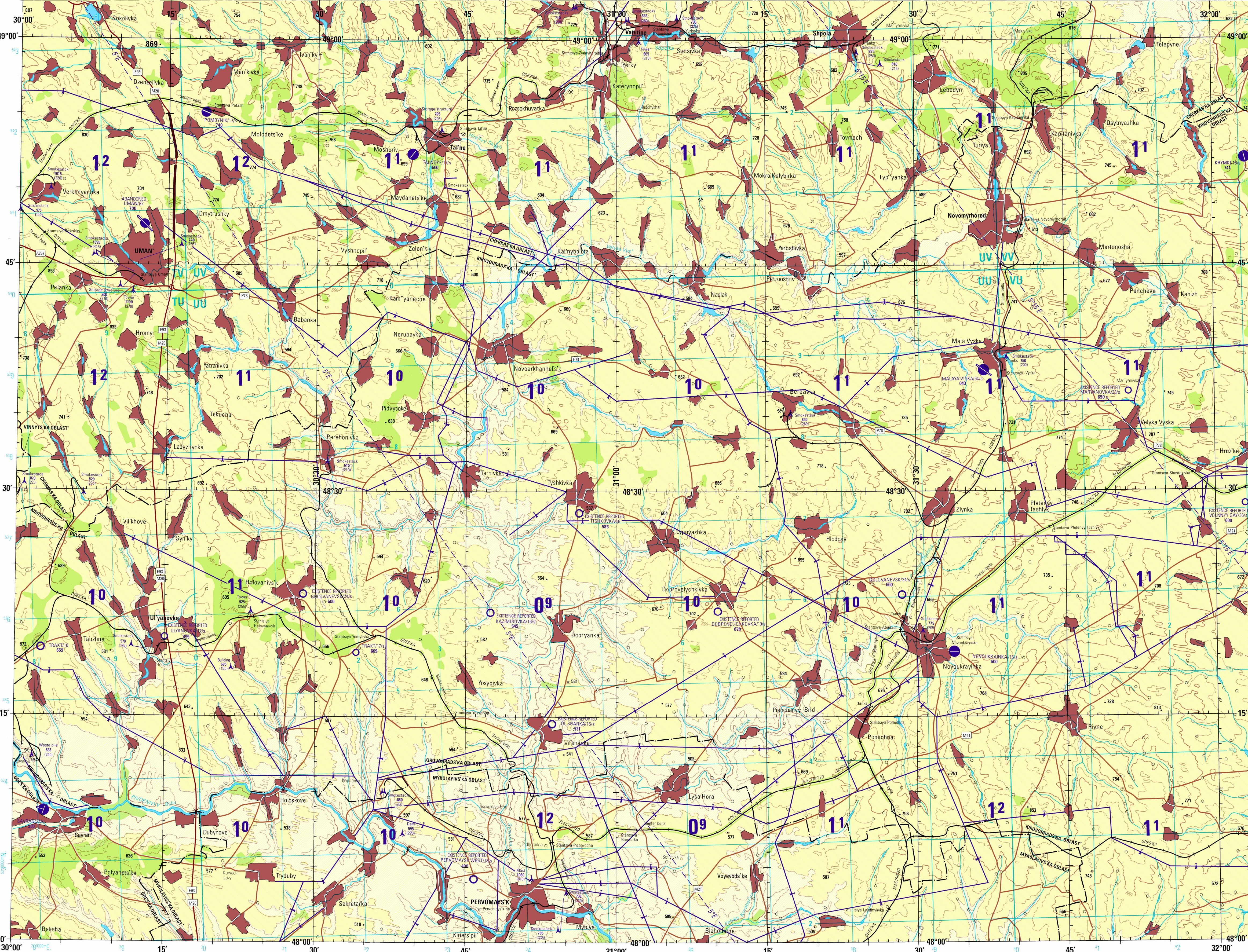
COORDINATE CONVERSION WGS 84 TO ED 50
GRID: ADD 32m. E., ADD 16m. N.
GEOGRAPHIC: ADD 18° LONG., ADD 24° LAT.

CONTOUR INTERVAL APPROXIMATELY 95 FEET

SCALE 1:250,000

USERS SHOULD REFER CORRECTIONS, ADDITIONS, AND COMMENTS TO THE NIMA CUSTOMER HELP DESK: 1-800-455-0899, COMMERCIAL 1-314-260-5032, DSN 469-6032, OR WRITE TO: DIRECTOR, NATIONAL IMAGERY AND MAPPING AGENCY, ATTN: CDD, MAIL STOP P-37, 4600 SANGAMER ROAD, BETHESDA, MD 20816-5003.

©COPYRIGHT 2000 BY THE UNITED STATES GOVERNMENT
NO COPYRIGHT CLAIMED UNDER TITLE 17 U.S.C.



NOTES

Powerlines are shown except within populated place limits. Other obstructions are shown, if they are 150 feet or more above ground level. See caution note.

On this graphic a lane is generally considered as being 8 feet (2.5 meters) in width.

BOUNDARY REPRESENTATION IS NOT NECESSARILY AUTHORITATIVE.

ALIGNMENT OF ALL BOUNDARIES IS APPROXIMATE. Road classification should be referred to with caution.

DEPICTION OF INTERNATIONAL BOUNDARIES HAS CHANGED SINCE THE LAST EDITION.

Printed by NIMA 9-00

Horizontal Datum: World Geodetic System 1984
Vertical Datum: Mean Sea Level
Transverse Mercator Projection

NSN 7641014101691
NIMA Form No. 1501ANM3610

ED. NO. 003