

SERIES 1501 AIR SHEET NM 36-4 EDITION 3

POPULATED PLACES  
 Over 100,000  
 50,000 to 100,000  
 10,000 to 50,000  
 2,000 to 10,000

ROADS  
 4 LANES DUAL  
 All weather, hard surface  
 More than two lanes wide  
 Two lanes wide  
 One lane wide  
 All weather, loose or light surface  
 More than two lanes wide  
 Two lanes wide  
 One lane wide  
 Fair or dry weather, loose surface  
 Track or trail  
 Route marker

RAILROADS  
 Normal gauge 1.52m (5')  
 Single track  
 Multiple track  
 Narrow gauge

BOUNDARIES  
 International  
 Intercontinental or intercolonial, autonomous zone  
 First order administrative division  
 Reservation

OTHER FEATURES  
 Landmark  
 Horizontal control point  
 Levee, Burial mound  
 Mine  
 Dam or lock, Sand  
 Dunes, Crescent, Lateral, Ripple

VEGETATION  
 Woods  
 Orchard or vineyard

HYDROGRAPHY  
 Well, Perennial, Intermittent  
 Intermittent streams: Single, Double line  
 Disappearing stream: Swamp or marsh  
 Intermittent lake: Dry lake

TERRAIN ELEVATIONS  
 Spot elevation: normal, critical  
 HIGHEST KNOWN elevation is 705 feet at the following coordinates:  
 Geographic Grid  
 ± following elevation value indicates accuracy is not within 100 feet.

AERODROMES (Military or Civil)  
 EDNA/50/5  
 Field limits with runway pattern  
 EDNA-Name  
 50 Length of longest runway to nearest hundreds of feet  
 S-Soft or unimproved surface  
 U-Unknown surface  
 725-Elevation  
 Field limits, with runway pattern unknown  
 Field limits unknown, with runway pattern  
 Field limits and runway pattern unknown

HELIPORT  
 VISUAL AIDS AND OBSTRUCTIONS  
 Obstruction  
 1108-Elevation of obstruction top, above sea level.  
 (259)-Elevation of obstruction top, above ground level.  
 Group obstruction  
 Radio facility obstruction  
 Power transmission line  
 Visual ground sign  
 Aero light, Marine light

RADIO FACILITIES  
 RADIO RANGE LF/MF  
 MULTIPLE RADIO FACILITIES  
 CONTROLLED AIRSPACE  
 ADIZ

LOCATION DIAGRAM

30° 00'	30° 15'	30° 30'	30° 45'	31° 00'
NM 36-11	NM 36-12	NM 36-13	NM 36-14	NM 36-15
NM 36-2	NM 36-3	NM 36-4	NM 36-5	NM 36-6
NM 36-11	NM 36-12	NM 36-13	NM 36-14	NM 36-15

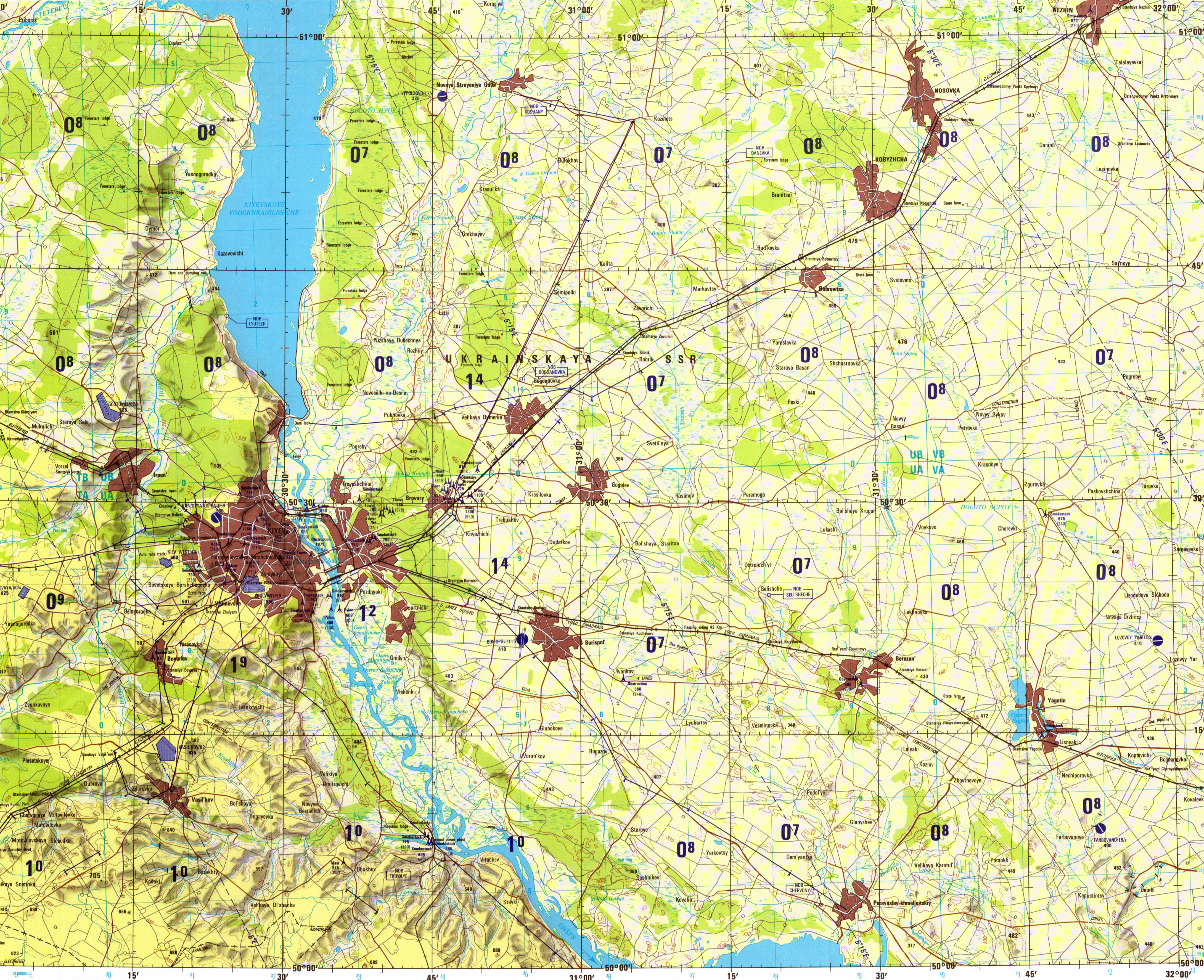


CAUTION  
 AIR INFORMATION CURRENT THROUGH 15 AUGUST 1981  
 Consult NOTAMS and Flight Information Publications for the latest information. The 5000 Aeronautical Chart Updating Manual or MDD (U.K.) Aeronautical Chart Amendment Document for other chart version information.

LINES OF EQUAL MAGNETIC VARIATION FOR 1980  
 (Annual rate of change 3' increase)

ATTENTION  
 THIS CHART CONTAINS MAXIMUM ELEVATION FIGURES (MEF)  
 The Maximum Elevation Figures shown in quadrangles bounded by ticked lines of latitude and longitude are represented in THOUSANDS and HUNDREDS of feet above mean sea level. The MEF is based on information available concerning the highest known feature in each quadrangle, including terrain and obstructions (trees, towers, antennas, etc.). In areas of extensive unreliable relief, the MEF is shown by a note spaced across the area.

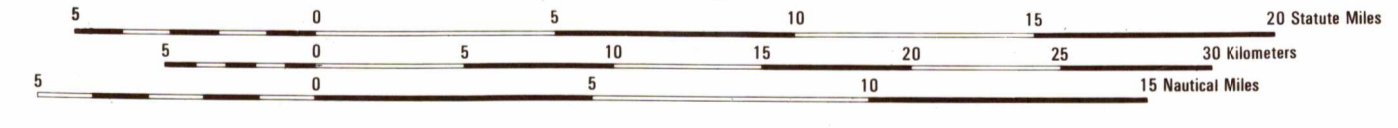
EXAMPLE: 12.500 feet



Prepared and published by the Defense Mapping Agency Hydrographic/Topographic Center, Washington, D. C. Compiled January 1979.

JOINT OPERATIONS GRAPHIC (AIR)

SCALE 1:250,000



CONTOUR INTERVAL APPROXIMATELY 70 FEET

FOR REFERENCING, GRID AND GEOGRAPHIC VALUES MAY BE CONSIDERED AS EITHER EUROPEAN OR WORLD GEODETIC SYSTEM DATUM SINCE POSITION PLOTTING DIFFERENCES ARE NOT SIGNIFICANT AT THIS SCALE.

USERS SHOULD REFER TO CORRECTIONS, ADDITIONS, AND COMMENTS TO THE NIMA CUSTOMER HELP DESK: 1-800-455-0886 COMMERCIAL: 301-300-8802; OR WRITE TO: ATTN: CDD, MAP SUPPORT/3 NATIONAL IMAGERY AND MAPPING AGENCY, 4600 SANGAMER ROAD, BETHESDA, MD 20814-5003

GLOSSARY

- Boloto ..... swamp
- Oblast ..... second-order administrative division
- Ostanovnyy Punkt ..... stop
- Ostrov ..... island
- Ostrov ..... island
- Ozero ..... lake
- Raz'voz ..... passing siding
- R.S.F.S.R. ..... first-order administrative division
- S.S.S.R. ..... first-order administrative division
- Stantsiya ..... station
- Vodokhranilishche ..... reservoir
- Zaliv ..... inlet

RELIABILITY OF THIS GRAPHIC

Compiled from best available source materials.  
 Horizontal Datum: Approximate European Vertical Datum: Approximate Kronstadt Transverse Mercator Projection

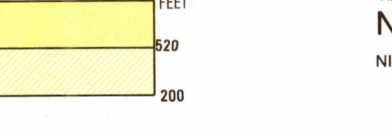
CONVERSION OF ELEVATIONS

FEET	METERS	FEET	METERS
1000	305	10000	3048
900	274	9000	2743
800	244	8000	2438
700	213	7000	2134
600	183	6000	1829
500	152	5000	1524
400	122	4000	1219
300	91	3000	914
200	61	2000	610
150	46	1500	457
100	31	1000	305

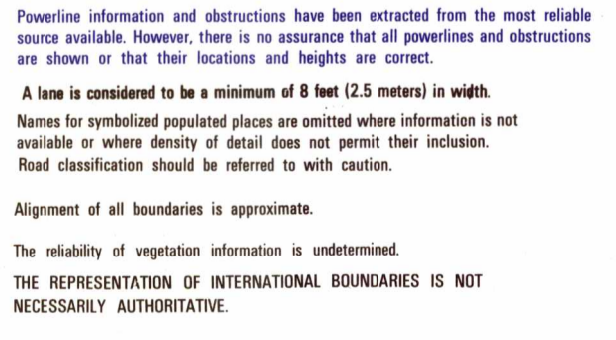
NOTES

Only obstructions 200 feet or more above ground level are shown.  
 Powerline information and obstructions have been extracted from the most reliable source available. However, there is no assurance that all powerlines and obstructions are shown or that their locations and heights are correct.  
 A lane is considered to be a minimum of 8 feet (2.5 meters) in width. Names for symbolized populated places are omitted where information is not available or where density of detail does not permit their inclusion. Road classification should be referred to with caution.  
 Alignment of all boundaries is approximate.  
 The reliability of vegetation information is undetermined.  
 THE REPRESENTATION OF INTERNATIONAL BOUNDARIES IS NOT NECESSARILY AUTHORITY.

ELEVATION TINTS



GEOPREF BASIC 15° QUADRANGLE



NSN 7641014103495  
 NIMA REF. NO. 1501ANM3604