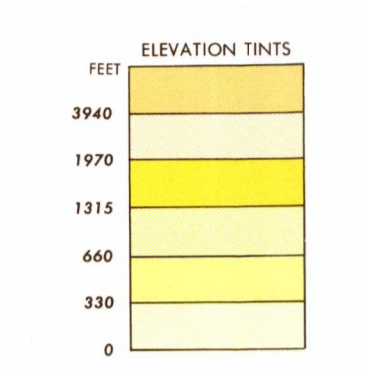
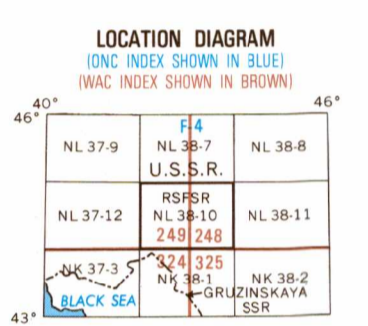


SERIES 1501 AIR SHEET NL 38-10 EDITION 2  
COMPANION SERIES 1501 SHEET IS EDITION 1



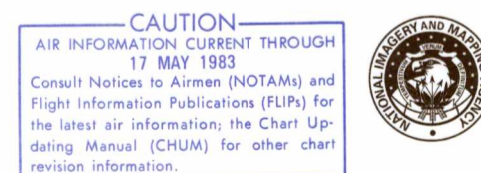
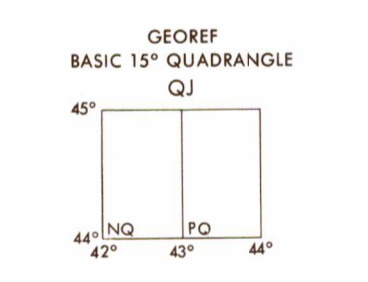
RELIABILITY OF THIS GRAPHIC  
Compiled from best available source materials 1967

Horizontal Datum: European  
Vertical Datum: Mean Sea Level  
Transverse Mercator Projection



SEE REVERSE SIDE FOR GLOSSARY  
BAKIMAK TERİSİ TARAFI İÇİN LÜGATÇE

NOTES - NOTLAR  
Road classification should be referred to with caution.  
Yol sınıfları müracaat etmek ile kıyas edilmemelidir.  
On this map a lane is generally considered as being 2.5 meters (8 feet) in width.  
Bu haritada tek şeritli bir yol aşığı 2,5 metrelere (8 fit) genişliğindedir.  
Alignment of all boundaries is approximate.  
Sınır çizimlerinin düzlemine tabiidir.  
Names for symbolized populated places are omitted where information is not available or where density of detail does not permit their inclusion.  
Talışların çok olduğu yerlerde, işaretleme gösterilen mesafeler yerlerine tam yazılmamıştır.  
Only obstructions 200 feet or more above ground level are shown.  
Powerline information and obstructions have been extracted from the most reliable source available. However, there is no assurance that all powerlines and obstructions are shown or that their locations and heights are correct.



Prepared and published by the Defense Mapping Agency  
Hydrographic/Topographic Center, Washington, D.C.  
20315. Compiled in 1967.

TO REFER THIS SHEET TO WORLD GEODETIC SYSTEM SUBTRACT 2.9 SECONDS FROM THE LATITUDE VALUE AND SUBTRACT 1.0 SECONDS FROM THE LONGITUDE VALUE; SUBTRACT 183 METERS FROM THE UTM GRID NORTHING VALUE AND SUBTRACT 32 METERS FROM THE UTM GRID EASTING VALUE.

GRID COORDINATE	GRID VALUE	GRID VALUE
44°00'N	4399.7	4400.0
44°15'N	4399.7	4415.0
44°30'N	4399.7	4430.0
44°45'N	4399.7	4445.0
45°00'N	4399.7	4460.0
44°00'E	4399.7	4399.7
44°15'E	4399.7	4414.7
44°30'E	4399.7	4429.7
44°45'E	4399.7	4444.7
45°00'E	4399.7	4459.7

SCALE 1:250,000  
PYATIGORSK, U.S.S.R.

SERIES 1501 AIR SHEET NL 38-10 EDITION 2  
COMPANION SERIES 1501 SHEET IS EDITION 1

### ELEVATIONS IN FEET YÜKSEKLER FITİDİR

- ROADS - YOLLAR  
All weather, hard surface Daimî, sert sahîli  
Two or more lanes wide İki veya daha fazla şeritli  
One lane wide Tek şeritli  
All weather, loose or light surface Daimî, gevşek sahîli  
Two or more lanes wide İki veya daha fazla şeritli  
One lane wide Tek şeritli  
Fair or dry weather, loose surface Kuru mevsimde midedi, gevşek sahîli  
Track or trail Yolu, patika
- RAILROADS - DEMİRYOLLAR  
Normal gauge (5') Normal hat (1,52 m)  
Narrow gauge Dar hat  
Station location Exact Approximate İstasyon Mekanî: Kat'ı, Takribî
- BOUNDARIES - HÜDUTLAR  
International Boundary aid Sınır çiziminde yardımcı  
Primary administrative İkinci administrative  
Secondary administrative İkinci sınırlar taksimat

### JOINT OPERATIONS GRAPHIC (AIR)

Scale 1:250,000  
10 Statute Miles  
15 Kilometers  
5 Nautical Miles

CONTOUR INTERVAL APPROXIMATELY 70 FEET MÜHÜRANİ ARAĞI TAKRİBEN 70 FIT

TRANSVERSE MERCATOR PROJECTION

BLUE NUMBERED LINES INDICATE THE 1000 METER UNIVERSAL TRANSVERSE MERCATOR GRID ZONE 38, INTERNATIONAL SPHEROID  
MAVİ BAKIMLI HATLAR ENTERNASİYONAL SFERİD VE 38. DİLİME AT 1000 METRELİK UNIVERSAL TRANSVERS MERKATOR GRİDİNİ GÖSTERİR

USERS SHOULD REFER CORRECTIONS, ADDITIONS, AND COMMENTS TO THE NIMA OPERATIONAL HELP DESK:  
1-800-458-6888 COMMERCIAL (114-263-4844) OR WRITE TO DIRECTOR, NATIONAL MAPS AND MAPPING AGENCY, ATTN.: ES, MAIL STOP L-80, 4801 SANGAMORE ROAD, BETHESDA, MD 20815-5003.

### ELEVATIONS IN FEET YÜKSEKLER FITİDİR

- VEGETATION - ENEMİBİLİ AĞACLIK  
Wood-bushwood Orman ve çalılık  
AERODROMES (Military or Civil) HAVA MEYDANLARI (Askerî veya sivil)  
Field limits with runway pattern Alanî hadîmler, ipe uçak pisti nümune  
EDNA - Elevation Datum  
50-length of longest runway to nearest hundreds of feet Uçak pisti uzunluğuna en yakın yüzlerce  
Soft or unpaved surface Yumuşak veya ham gevşek sahîli  
725-Elevation Yükseklik  
Field limits with runway pattern unknown Alanî hadîmler, ipe uçak pisti nümune meçhul  
Field limits and runway pattern unknown Alanî hadîmler ve uçak pisti nümune meçhul  
EDNA - Elevation Datum  
HELIPORT HELİPORT  
CONTROLLED AIRSPACE İDARE ETEME HAVA ALANIK  
ADIZ ATLANTİK ADIZ

### VISUAL AIDS AND OBSTRUCTIONS YARDIMLAR GÖRMEGE AID VE ENGELLER

- Obstruction Engel  
1100-Elevation of obstruction top, above sea level. Yüksek engelîn üst taraf, yukarı deniz hizası  
250-Elevation of obstruction top, above ground level. Yüksek engelîn üst taraf yukarı zemin hizası  
Group obstruction Grup engel  
Radio facility obstruction Radyo kolaylık engel  
Power transmission line Elektrik enerji hatları
- TERRAIN ELEVATIONS - ARAZI YÜKSEKLİKLERİ  
HIGHEST KNOWN ELEVATION is 4593 feet at 44°06'N, 43°01'E  
4593 fit en yukarı yükseklik Kuzeyde 44°06', Doğuda 43°01' yerleşimdir.  
Deniz seviyesinden yükseklik değeri, mülahazâ açıklık parası üzerindeki veya indirilmemiş olduğu doğruluğu (shah) gösterir.

ATTENTION  
THIS CHART CONTAINS MAXIMUM ELEVATION FIGURES (MEF)  
The Maximum Elevation Figures shown in quadrangles bounded by ticked lines of latitude and longitude are represented in THOUSANDS and HUNDREDS of feet above mean sea level. The MEF is based on information available concerning the highest known feature in each quadrangle, including terrain and obstructions (trees, towers, antennas, etc.).  
EXAMPLE: 12,500 feet  
**125**

NSN 7641014101872  
NIMA Ref No: 1501ANL3810  
ED. NO 002