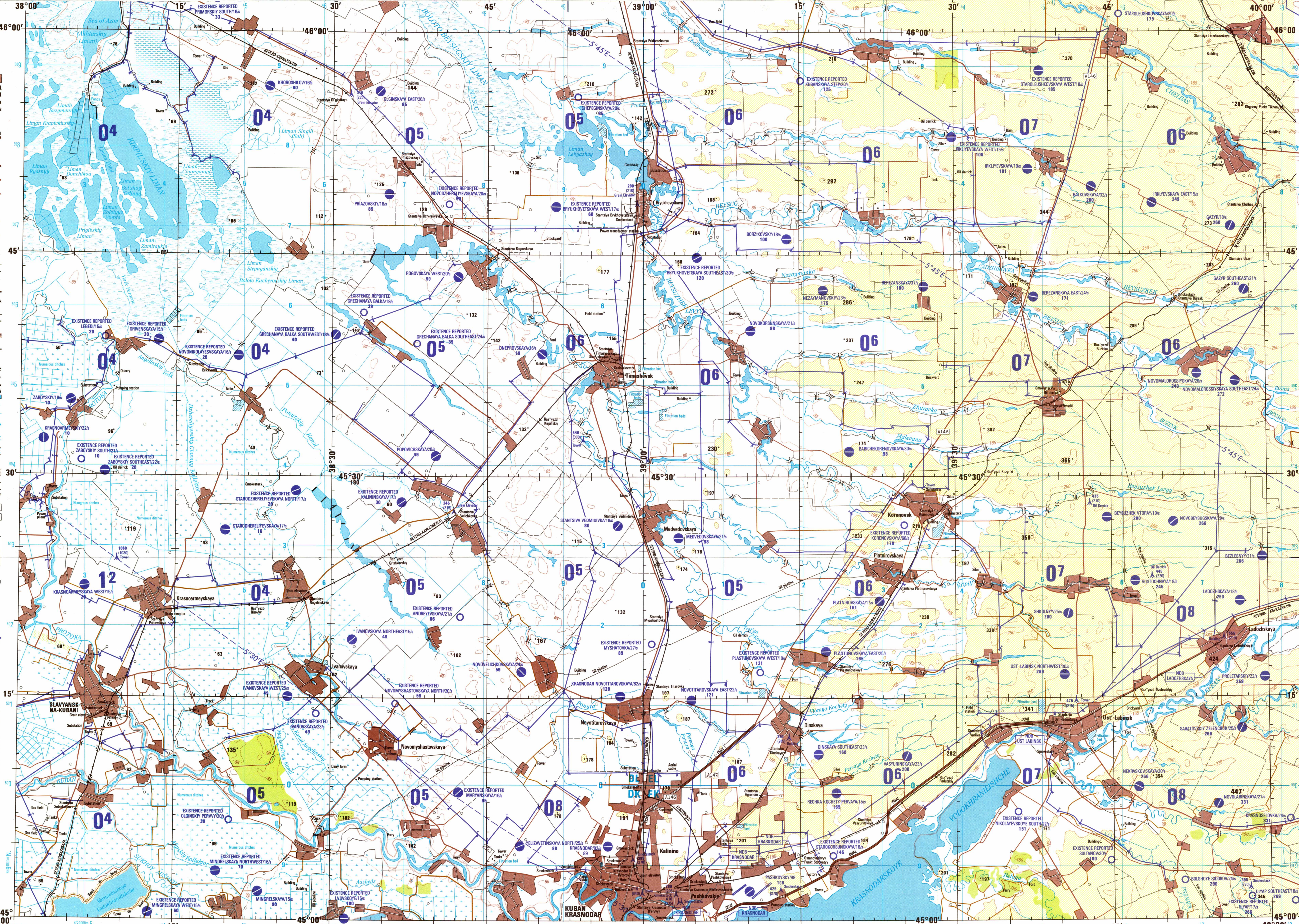


SERIES 1501 AIR SHEET NL 37-8 EDITION 5

- POPULATED PLACES-MESKUN YERLER
- Over 100,000-100,000 veya daha fazla
  - 50,000 to 100,000
  - 10,000 to 50,000
  - 2,000 to 10,000
- ROADS-YOLLAR
- Dual highway
  - Two lanes wide
  - One lane wide
  - Old weather, hard surface
  - More than two lanes wide
  - Two lanes wide
  - One lane wide
  - Old weather, loose surface
  - More than two lanes wide
  - Two lanes wide
  - One lane wide
  - Old weather, loose surface
  - More than two lanes wide
  - Two lanes wide
  - One lane wide
- RAILROADS-DEMIRYOLLAR
- Normal gauge 1.52m (5') tek hat
  - Narrow gauge Dar hat
- BOUNDARIES-HUDUTLAR
- International Dvize
  - First-order administrative division
  - Second-order administrative division
- OTHER FEATURES-DIGER ISARETLER
- Area name bölge adı
  - Mine or quarry maden veya taş ocağı
  - Campsite, Ruins, Watermill kamp yeri, harabeler, su değirmeni
  - School, Church, Landmark okul, kilise, harabesi
  - Mosque, Muslim shrine cami, mezarlık, türbe
  - Well: Perennial, intermittent, spring, kuyu, kaynak
  - Small reservoir or cistern su deposu veya sarnıç
  - Underground aqueduct with shafts yeraltı suyu taşıyıcı
  - Sideline or Dry Lake: Intermittent lake suyu veya kuru göl, mevsimsel göl
  - Single line intermittent stream: Wadi, Rice paddy
  - Marsh or swamp: Land subject to inundation
  - Beak, levee, dyke, dike, dam, dike, dam, dike
  - Mudflat, Dredged surface
  - Sand, flat or rolling: Sand dunes
  - Horizontal contour point: İyemeyi noktası
- VEGETATION BİTKİ ÖRTÜSÜ
- Woods, brushwood, Scattered trees Orman, çalılık, ağaçlık
  - Orchard, vineyard, Sema Meyve bahçesi, bağ, çayır, patlık
- HYDROGRAPHY-SULAR
- Rocky, uncultivated or swamp Kıyısı, bataklık veya su ile bezenen
  - Expanded wreck Çökürken gemi kalıntıları
  - Limit of danger: Reel Tehlike hududu
  - Foreshore flat Kıyı düzlüğü
  - Depth curve: Lighthouse Denizik münhar, fener binası
- TERRAIN ELEVATIONS-ARAZI YÜKSEKLİKLERİ
- Spot elevation: Normal, Critical Riskin noktası: normal, çok tehlikeli
  - HIGHEST KNOWN elevation is 447 feet at the following coordinates:
  - Geographic: 45°06'N, 39°57'E
  - Grid: 447
- AERODROMES (Military or Civil)-HAVA MEYDANI (Askeri veya Sivil)
- Runway pattern known
  - EDNA-Name
  - 50-Length of longest runway to nearest hundreds of feet
  - 50-en uzun pist uzunluğu en yakın yüz yüze adı
  - 50-Unknown surface
  - 50-Unknown surface
- RADIO FACILITIES-RADYO TESİSLERİ
- VOR VORTAC
  - TACAN VORDME
  - RADIO RANGE LF/MF: Radyo nesir: alçak frekanslı frekans
  - MULTIPLE RADIO FACILITIES: Çeşitli radyo tesisleri
  - CONTROLLED AIRSPACE-KONTROLLÜ HAVA BÖLGESİ
- VISUAL AIDS AND OBSTRUCTIONS-YARDIMCI İŞARETLER VE ENGELLER
- Obstructions
  - 1108-Elevation of obstruction tops above sea level
  - (258)-Elevation of obstruction tops above ground level
  - 1108-Engel tepesinin ortama deniz seviyesinden yüksekliği
  - (258)-Engel tepesinin yerden yüksekliği
  - Group obstruction-Çoğulmuş engeller
  - Radio facility obstruction-Radyo tesisi engelleri
  - Power transmission line-Enerji nakil hatları
  - Visual ground sign-Gözetim yer işaretleri
  - Aero light-Marke ışık-İşareti kalıcı, Deniz teneri



LOCATION DIAGRAM  
INDEX INDEX SHOW IN BLUE  
INDEX INDEX SHOW IN RED/BROWN

SCALE 1:250,000  
KRASNODAR, RUSSIA

SERIES 1501 AIR SHEET NL 37-8 EDITION 5

SERIES 1501 COMPANION SHEET IS EDITION 2

**AIR INFORMATION CURRENT THROUGH 29 MAY 1997**

Consult NOTAMS and Flight Information Publications for the latest air information; the NIMA Aeronautical Chart Updating Manual or MDI (S) Aeronautical Chart Amendment Document for other chart information information.

**ATTENTION**

THIS CHART CONTAINS MAXIMUM ELEVATION FIGURES (MEF)

THE HIGHEST KNOWN ELEVATION OF ANY OBSTRUCTION IS 447 FEET AT THE FOLLOWING COORDINATES: 45°06'N, 39°57'E

125

**CAUTION**

Vertical obstructions, including powerlines, have been extracted from the most reliable sources available. However, there is no assurance that all obstructions, or that their locations or heights are exact.

THE DATUM AND ELLIPSOID FOR THIS MAP HAVE CHANGED FOR ADJACENT AND OVERLAPPING SHEETS. THERE ARE NO SIGNIFICANT CHANGES IN GRID OR GEOGRAPHIC VALUES AT THIS SCALE.

MAP INFORMATION AS OF 1996

ELEVATIONS IN FEET  
YÜKSEKLİKLER FITDIR

CONTOUR INTERVAL APPROXIMATELY 85 FEET  
MUNHANI ARALIĞI YAKLAŞIK OLARAK 85 FIT

125

**JOINT OPERATIONS GRAPHIC (AIR)**

SCALE 1:250,000  
ÖLÇEK 1:250,000

20 Statute Miles  
20 Kilometers  
15 Nautical Miles

CONTOUR INTERVAL APPROXIMATELY 85 FEET  
MUNHANI ARALIĞI YAKLAŞIK OLARAK 85 FIT

125

**GLOSSARY LÜGATÇE**

Balka	river	nehir
Bullock	ox	buğday
Canal	canal	kanal
Collector	canal	kanal
Lagoon	lagoon	lagun
Ostanovoychye punkt	stop	dura
Platfom	platform	platform
Railroad siding	railroad siding	demiryolu makası
Station	railroad station	demiryolu istasyonu
Stantsiya	railroad station	demiryolu istasyonu
Santuyevy antirochovaya	deminey	demiryolu istasyonu
Vodokanalizatsiya	reservoir	baraj gölü

125

**RELIABILITY OF THIS GRAPHIC**  
(As determined by standard practices)

PLOTING ACCURACY 90% ASSURANCE	AREA	AREA	
		Horizontal	Vertical
Contours	425 ft	425 ft	425 ft
	20 ft	20 ft	20 ft

GRAPHIC FEATURE: AREA I, AREA II, AREA III

Horizontal Datum: World Geodetic System  
Vertical Datum: Mean Sea Level  
Transverse Mercator Projection

125

**NOTES-NOTLAR**

Powerlines are shown except within populated place tints. Other obstructions are shown, if they are 200 feet or more above ground level. See caution note.

Hull and machinery of wrecks are shown, but not necessarily authoritative.

Düzenlenen yerler, diğer engeller, yük taşıyıcıları veya seviyesi 200 ft veya daha fazla ise, gösterilmelidir.

Deniz seviyesine göre 200 feet veya daha fazla yükseklikteki diğer engeller, ancak kesinlikle güvenilir değildir.

On the graphic a lane is generally considered as being 8 feet (2.5 meters) in width.

Bu haritada yollar genellikle genişliği 8 fit (2.5 metre) olarak kabul edilmiştir.

BOUNDARY REPRESENTATION IS NOT NECESSARILY AUTHORITY.

Hudutların kat 1 timsiz çizimdir ve kesin değildir.

ALIGNMENT OF ALL BOUNDARIES IS APPROXIMATE.

Bütün hudutların çizimi yaklaşık olarakdır.

Road classification should be referred to with caution.

Yolların sınıflandırması dikkatle kullanılmalıdır.

Name and boundaries of administrative divisions in Russia are not available.

Yarın adı ve sınırları Rusya'da mevcut değildir.

DEFLECTION OF INTERNATIONAL BOUNDARIES HAS CHANGED SINCE THE LAST EDITION.

Gözetim çizimleri önceki sürümüne göre değişmiştir.

125

**CONVERSION OF ELEVATIONS**

FEET	METERS	FEET	METERS
1000	299	1000	299
900	274	900	274
800	244	800	244
700	213	700	213
600	183	600	183
500	152	500	152
400	122	400	122
300	91	300	91
200	61	200	61
100	31	100	31

125

**GEOREF**

BASIC 15° QUADRANGLE

ELEVATION TINTS

125

Copyright 1987 by the UNITED STATES GOVERNMENT  
NO COPYRIGHT CLAIMED UNDER TITLE 17 U.S.C.

©TÜRK HAKKI AMERİKA BİRLİK DEVLETLERİ HÜKÜMETİ, 1987.  
AMERİKA BİRLİK DEVLETLERİ KANUNLARI, 17. ÜSÖYÜ HÜKÜMLERİNE GÖRE HİÇ BİR TEZİ HAKKI AMERİKA.

NSN 7641014105490  
1501ANL3708

ED. NO. 005